



联系我们 / Contact Us

苏州为山之环境技术有限公司

Suzhou Weishans Climate Technologies Co.,Ltd

公司官网 / Web:www.weishans.com

地址：江苏省苏州市相城区黄埭镇咏春科技园

Address: Yongchun Science and Technology Park, Huangdai Town, Xiangcheng District, Suzhou City, Jiangsu Province

免责声明

技术数据在印刷前已经校对过，印刷之后有再更新的可能。如有对某一参数确认的需求，请联系苏州为山之环境技术有限公司。为山之对参数中可能存在的差错概不承担任何责任，为山之保留自行改变其产品而不预先通知的权利。

Disclaimer

Our technical data have been checked before printing, but it is possible for data to be updated after printing. If you need to confirm a certain parameter, please contact Suzhou Weishans Climate Technology Co., Ltd. Weishans will not take any responsibilities for any possible errors in the parameters and reserve the right to change its products without prior notice.

Rev:202603

WF系列低温冷冻应用涡旋压缩机

R448A/R449A/R454C/R455A

WF Series Scroll Compressor for Low Temperature Application

目录Catalog

公司简介 <i>About us</i>	02
命名规则 <i>Nomenclature</i>	03
应用范围 <i>Application Range</i>	04
技术参数 <i>Specification</i>	05
制冷量 <i>Cooling Capacity</i>	13
外形尺寸 <i>Dimensional Information</i>	33

苏州为山环境技术有限公司

成立于2018年6月，专注于开发节能环保型压缩机，是一家创新型科技企业。为山之研发的涡旋式热泵压缩机核心技术已取得重大突破，并成功应用于多个领域，包括但不限于工业制冷、商用热水、工业蒸汽、农业烘干、制冷工程、精密空调、轨道交通制冷、转轮除湿及工业余热回收等。公司拥有先进的自动化生产线和高精度检测与加工设备，创新工艺流程，产品覆盖从2匹至25匹。公司产品通过了CCC、CE、CB、ROHS & REACH和ISO 9001等多项国际认证。

公司高度重视知识产权保护，产品已获得多项专利证书，公司荣获江苏省民营科技企业和国家级高新技术企业称号。

展望未来，公司将继续加大研发投入，致力于为客户提供绿色环保的热泵及冷冻压缩机解决方案，以减少全球碳排放为使命，为构建绿色地球家园贡献力量。

Suzhou Weishans Climate Technology Co., Ltd

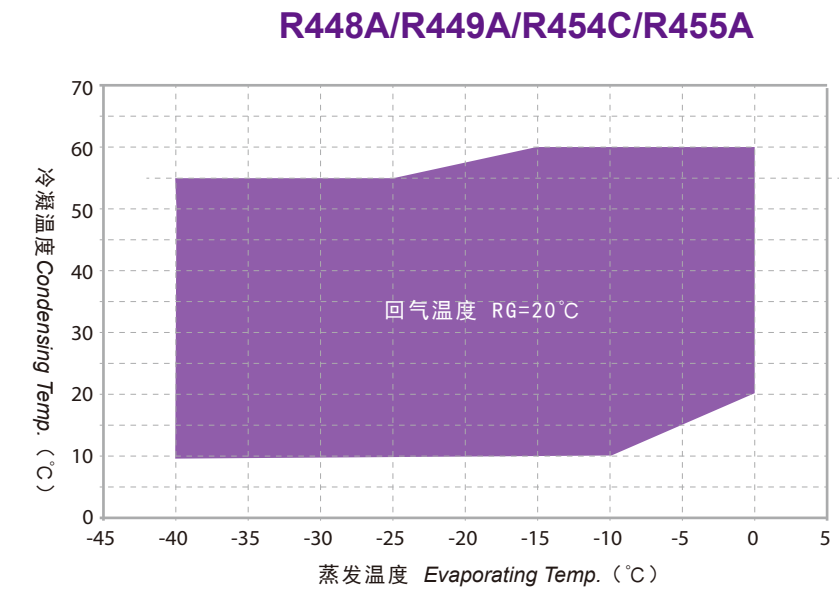
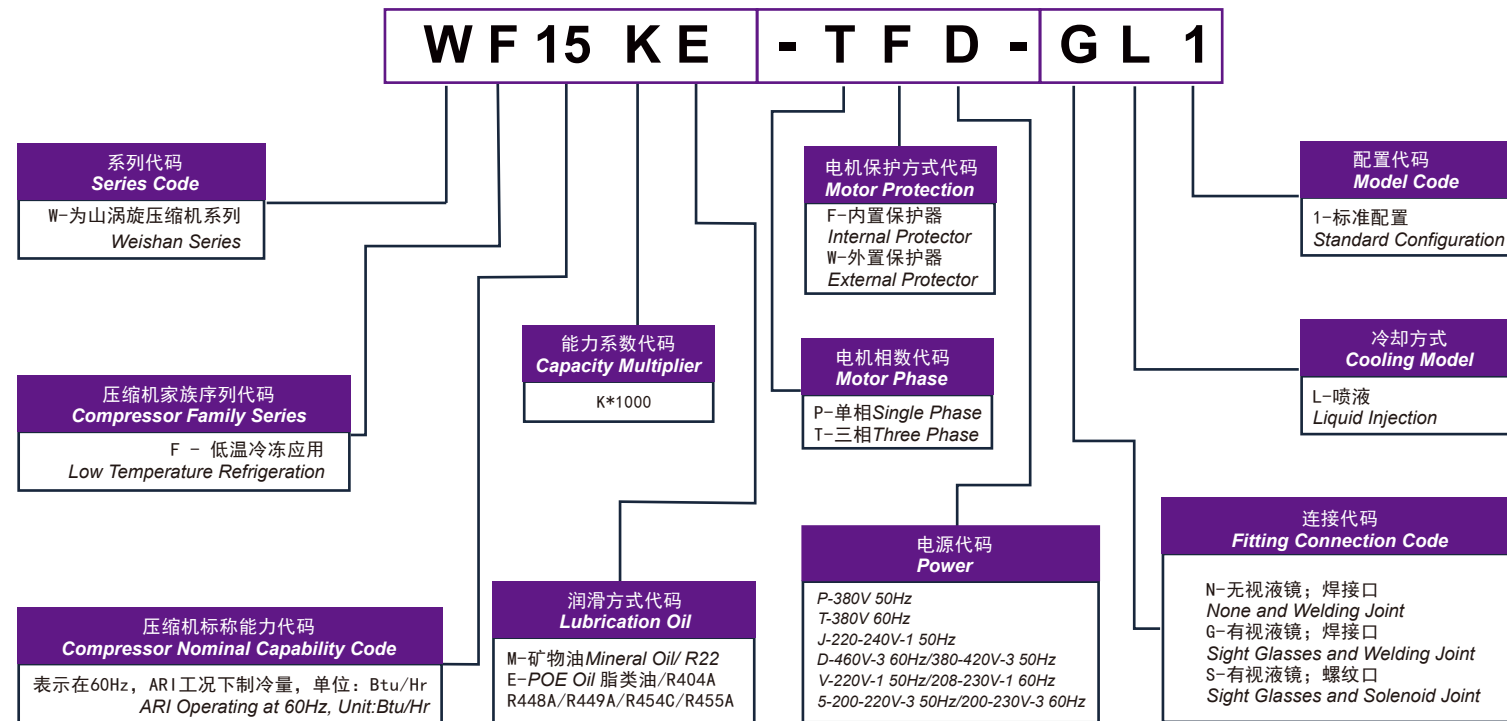
was established in June 2018, and focuses on the development of energy-saving and environment protection compressors. It is an innovative technology enterprise. The core technology of the scroll heat pump compressors developed by Weishans has made significant breakthroughs and has been successfully applied in multiple fields, including but not limited to industrial refrigeration, commercial hot water, industrial steam, agricultural drying, refrigeration engineering, precision air conditioning, rail transit refrigeration, rotary wheel dehumidification and industrial waste heat recovery, etc.

The company owns advanced automated production lines and high-precision testing and machining equipments, innovated technological process, with products covering the range from 2HP to 25HP. The company's products have passed multiple international certifications including CCC, CE, CB, ROHS & REACH and ISO 9001.

The company attaches great importance to the protection of intellectual property rights and has obtained several patent certificates. The company has been awarded the titles of Jiangsu Private Technology Enterprise and National High-tech Enterprise.

Looking forward to the future, the company will continue to increase investment in research and development, and is committed to providing customers with green and environmentally heat pump and refrigeration compressor solutions. With the mission of reducing global carbon emissions, it will contribute to building a green Earth home.

Build a Nine-ren Mountain
Forge Ahead
为山九仞 砥砺前行



型号 Model	WF06KE-PFJ-GL1	WF09KE-PFJ-GL1	WF13KE-PFJ-GL1	WF06KE-TFD-GL1	WF09KE-TFD-GL1	WF13KE-TFD-GL1	WF15KE-TFD-GL1
电制 Motor Power	220-240V/1~/50Hz			380-420V/3~/50Hz or 460V/3~/60Hz			
名义功率 Nominal Power (HP)	2	3	4	2	3	4	5
排量 Displacement (cc/Rev)	37.2	50.6	63.9	37.2	50.6	63.9	84.5
制冷剂 Refrigerant	R448A						
名义制冷量 Nominal Capacity (W)	1738	2365	2987	1739	2365	2987	3950
名义输入功率 Nominal Power (W)	1424	1881	2375	1342	1826	2306	3049
名义工况能效比 COP (W/W)	1.22	1.26	1.26	1.30	1.30	1.30	1.30
名义工况电流 Nominal Operating Current (A)	7.5	9.9	12.6	2.4	3.2	4.1	5.4
堵转电流 LRA (A)	76	76	108	38.8	38.8	38.8	83.6
最大运行电流 MOC (A)	10.6	14.1	17.7	3.4	4.6	5.8	7.6
曲轴箱加热器功率 Crankcase Heater (W)	70	70	70	70	70	70	70
接管尺寸 Fitting ID Size (mm)	排气管 Dis.Tube	12.94-13.10					
	吸气管 Suc.Tube	22.37-22.51					
外形尺寸 Dimension (mm)	长(L)	241.67					246.65
	宽(W)	230.5					230.5
	高(H)	403.4					442.7
底脚安装尺寸 Mounting Dim. (mm)	190.5x190.5						
润滑油类型 Lubrication Oil	POE						
润滑油初次充注量 Lubrication Oil Initial Charge (L)	1.4	1.4	1.4	1.4	1.4	1.4	1.8
润滑油重新充注量 Lubrication Oil Recharge (L)	1.2	1.2	1.2	1.2	1.2	1.2	1.6
最大工作压力 Maxium Operating Pressure (MPa)	高压侧 High Pressure Side	3					
	低压侧 Low Pressure Side	2					
重量 Weight (kg)	31	31	31	28	28	28	37

注: 蒸发温度 -31.7°C, 冷凝温度 40.6°C, 吸气温度 20°C, 无过冷度
Note: E.T. -31.7 °C, C.T. 40.6 °C, R.G. 20°C, No Subcooling

型号 Model	WF18KE-TFD-GL1	WF25KE-TFD-GL1	WF28KE-TFD-GL1	WF34KE-TFD-GL1	WF38KE-TFD-GL1	WF49KE-TFD-GL1	WF60KE-TWD-GL1	WF75KE-TWD-GL1
电制 Motor Power	380-420V/3~/50Hz or 460V/3~/60Hz							
名义功率 Nominal Power (HP)	6	7	8	10	12	15	20	25
排量 Displacement (cc/Rev)	98.9	108	127	165.5	190.8	248.9	325	400
制冷剂 Refrigerant	R448A							
名义制冷量 Nominal Capacity (W)	4623	5048	5936	7736	8918	11634	15191	18696
名义输入功率 Nominal Power (W)	3569	3897	4583	5972	6885	8982	11728	14434
名义工况能效比 COP (W/W)	1.30	1.30	1.30	1.30	1.30	1.30	1.30	1.30
名义工况电流 Nominal Operating Current (A)	6.3	6.9	8.1	10.6	12.2	15.9	20.7	25.5
堵转电流 LRA (A)	83.6	83.6	117	117	117	117	267.9	267.9
最大运行电流 MOC (A)	8.9	9.7	11.4	14.9	17.2	22.4	29.3	36.1
曲轴箱加热器功率 Crankcase Heater (W)	70	70	90	90	90	90	90	90
接管尺寸 Fitting ID Size (mm)	排气管 Dis.Tube	12.94-13.10		22.37-22.51			28.81-28.95	
	吸气管 Suc.Tube	22.37-22.51		34.97-35.10				
外形尺寸 Dimension (mm)	长(L)	246.65		284.5			296.05	
	宽(W)	230.5		235.5			286.05	
	高(H)	442.7		522.7			653.7	
底脚安装尺寸 Mounting Dim. (mm)	190.5x190.5							
润滑油类型 Lubrication Oil	POE							
润滑油初次充注量 Lubrication Oil Initial Charge (L)	1.8	1.8	3.0	3.0	3.2	3.2	5.0	5.0
润滑油重新充注量 Lubrication Oil Recharge (L)	1.6	1.6	2.8	2.8	3.0	3.0	4.8	4.8
最大工作压力 Maxium Operating Pressure (MPa)	高压侧 High Pressure Side	3						
	低压侧 Low Pressure Side	2						
重量 Weight (kg)	38	38	66	66	66	66	92	92

注: 蒸发温度 -31.7°C, 冷凝温度 40.6°C, 吸气温度 20°C, 无过冷度
Note: E.T. -31.7 °C, C.T. 40.6 °C, R.G. 20°C, No Subcooling

型号 Model	WF06KE-PFJ-GL1	WF09KE-PFJ-GL1	WF13KE-PFJ-GL1	WF06KE-TFD-GL1	WF09KE-TFD-GL1	WF13KE-TFD-GL1	WF15KE-TFD-GL1
电制 Motor Power	220-240V/1~50Hz			380-420V/3~50Hz or 460V/3~60Hz			
名义功率 Nominal Power (HP)	2	3	4	2	3	4	5
排量 Displacement (cc/Rev)	37.2	50.6	63.9	37.2	50.6	63.9	84.5
制冷剂 Refrigerant	R449A						
名义制冷量 Nominal Capacity (W)	1757	2389	3017	1757	2389	3017	3990
名义输入功率 Nominal Power (W)	1410	1863	2352	1330	1808	2284	3020
名义工况能效比 COP (W/W)	1.25	1.28	1.28	1.32	1.32	1.32	1.32
名义工况电流 Nominal Operating Current (A)	7.5	9.9	12.4	2.4	3.2	4.0	5.3
堵转电流 LRA (A)	76	76	108	38.8	38.8	38.8	83.6
最大运行电流 MOC (A)	10.6	14.1	17.7	3.4	4.6	5.8	7.6
曲轴箱加热器功率 Crankcase Heater (W)	70	70	70	70	70	70	70
接管尺寸 Fitting ID Size (mm)	排气管 Dis.Tube	12.94-13.10					
	吸气管 Suc.Tube	22.37-22.51					
外形尺寸 Dimension (mm)	长(L)	241.67					246.65
	宽(W)	230.5					230.5
	高(H)	403.4					442.7
底脚安装尺寸 Mounting Dim. (mm)	190.5x190.5						
润滑油类型 Lubrication Oil	POE						
润滑油初次充注量 Lubrication Oil Initial Charge (L)	1.4	1.4	1.4	1.4	1.4	1.4	1.8
润滑油重新充注量 Lubrication Oil Recharge (L)	1.2	1.2	1.2	1.2	1.2	1.2	1.6
最大工作压力 Maxium Operating Pressure (MPa)	高压侧 High Pressure Side	3					
	低压侧 Low Pressure Side	2					
重量 Weight (kg)	31	31	31	28	28	28	37

注: 蒸发温度 -31.7°C, 冷凝温度 40.6°C, 吸气温度 20°C, 无过冷度
Note: E.T. -31.7 °C, C.T. 40.6 °C, R.G. 20°C, No Subcooling

型号 Model	WF18KE-TFD-GL1	WF25KE-TFD-GL1	WF28KE-TFD-GL1	WF34KE-TFD-GL1	WF38KE-TFD-GL1	WF49KE-TFD-GL1	WF60KE-TWD-GL1	WF75KE-TWD-GL1
电制 Motor Power	380-420V/3~50Hz or 460V/3~60Hz							
名义功率 Nominal Power (HP)	6	7	8	10	12	15	20	25
排量 Displacement (cc/Rev)	98.9	108	127	165.5	190.8	248.9	325	400
制冷剂 Refrigerant	R449A							
名义制冷量 Nominal Capacity (W)	4670	5100	5997	7815	9010	11753	15347	18888
名义输入功率 Nominal Power (W)	3535	3860	4539	5915	6819	8896	11616	14296
名义工况能效比 COP (W/W)	1.32	1.32	1.32	1.32	1.32	1.32	1.32	1.32
名义工况电流 Nominal Operating Current (A)	6.3	6.8	8.0	10.5	12.1	15.7	20.5	25.3
堵转电流 LRA (A)	83.6	83.6	117	117	117	117	267.9	267.9
最大运行电流 MOC (A)	8.9	9.7	11.4	14.9	17.2	22.4	29.3	36.1
曲轴箱加热器功率 Crankcase Heater (W)	70	70	90	90	90	90	90	90
接管尺寸 Fitting ID Size (mm)	排气管 Dis.Tube	12.94-13.10		22.37-22.51			28.81-28.95	
	吸气管 Suc.Tube	22.37-22.51		34.97-35.10				
外形尺寸 Dimension (mm)	长(L)	246.65		284.5			296.05	
	宽(W)	230.5		235.5			286.05	
	高(H)	442.7		522.7			653.7	
底脚安装尺寸 Mounting Dim. (mm)	190.5x190.5							
润滑油类型 Lubrication Oil	POE							
润滑油初次充注量 Lubrication Oil Initial Charge (L)	1.8	1.8	3.0	3.0	3.2	3.2	5.0	5.0
润滑油重新充注量 Lubrication Oil Recharge (L)	1.6	1.6	3.0	3.0	3.0	3.0	4.8	4.8
最大工作压力 Maxium Operating Pressure (MPa)	高压侧 High Pressure Side	3						
	低压侧 Low Pressure Side	2						
重量 Weight (kg)	38	38	66	66	66	66	92	92

注: 蒸发温度 -31.7°C, 冷凝温度 40.6°C, 吸气温度 20°C, 无过冷度
Note: E.T. -31.7 °C, C.T. 40.6 °C, R.G. 20°C, No Subcooling

型号 Model		WF06KE-PFJ-GL1	WF09KE-PFJ-GL1	WF13KE-PFJ-GL1	WF06KE-TFD-GL1	WF09KE-TFD-GL1	WF13KE-TFD-GL1	WF15KE-TFD-GL1
电制 Motor Power		220-240V/1~/50Hz			380-420V/3~/50Hz or 460V/3~/60Hz			
名义功率 Nominal Power (HP)		2	3	4	2	3	4	5
排量 Displacement (cc/Rev)		37.2	50.6	63.9	37.2	50.6	63.9	84.5
制冷剂 Refrigerant		R454C						
名义制冷量 Nominal Capacity (W)		1702	2314	2923	1701	2314	2922	3864
名义输入功率 Nominal Power (W)		1438	1899	2398	1355	1844	2328	3079
名义工况能效比 COP (W/W)		1.18	1.22	1.22	1.26	1.25	1.26	1.25
名义工况电流 Nominal Operating Current (A)		7.6	10.0	12.7	2.4	3.3	4.1	5.4
堵转电流 LRA (A)		76	76	108	38.8	38.8	38.8	83.6
最大运行电流 MOC (A)		10.6	14.1	17.7	3.4	4.6	5.8	7.6
曲轴箱加热器功率 Crankcase Heater (W)		70	70	70	70	70	70	70
接管尺寸 Fitting ID Size (mm)	排气管 Dis.Tube	12.94-13.10						
	吸气管 Suc.Tube	22.37-22.51						
外形尺寸 Dimension (mm)	长(L)	241.67						246.65
	宽(W)	230.5						230.5
	高(H)	403.4						442.7
底脚安装尺寸 Mounting Dim. (mm)		190.5x190.5						
润滑油类型 Lubrication Oil		POE						
润滑油初次充注量 Lubrication Oil Initial Charge (L)		1.4	1.4	1.4	1.4	1.4	1.4	1.8
润滑油重新充注量 Lubrication Oil Recharge (L)		1.2	1.2	1.2	1.2	1.2	1.2	1.6
最大工作压力 Maxium Operating Pressure (MPa)	高压侧 High Pressure Side	3						
	低压侧 Low Pressure Side	2						
重量 Weight (kg)		31	31	31	28	28	28	37

注: 蒸发温度 -31.7°C, 冷凝温度 40.6°C, 吸气温度 20°C, 无过冷度
Note: E.T. -31.7 °C, C.T. 40.6 °C, R.G. 20°C, No Subcooling

型号 Model		WF18KE-TFD-GL1	WF25KE-TFD-GL1	WF28KE-TFD-GL1	WF34KE-TFD-GL1	WF38KE-TFD-GL1	WF49KE-TFD-GL1	WF60KE-TWD-GL1	WF75KE-TWD-GL1
电制 Motor Power		380-420V/3~/50Hz or 460V/3~/60Hz							
名义功率 Nominal Power (HP)		6	7	8	10	12	15	20	25
排量 Displacement (cc/Rev)		98.9	108	127	165.5	190.8	248.9	325	400
制冷剂 Refrigerant		R454C							
名义制冷量 Nominal Capacity (W)		4522	4938	5807	7567	8724	11381	14860	18290
名义输入功率 Nominal Power (W)		3603	3935	4627	6030	6952	9069	11841	14574
名义工况能效比 COP (W/W)		1.26	1.25	1.26	1.25	1.25	1.25	1.25	1.25
名义工况电流 Nominal Operating Current (A)		6.4	7.0	8.2	10.7	12.3	16.0	20.9	25.8
堵转电流 LRA (A)		83.6	83.6	117	117	117	117	267.9	267.9
最大运行电流 MOC (A)		8.9	9.7	11.4	14.9	17.2	22.4	29.3	36.1
曲轴箱加热器功率 Crankcase Heater (W)		70	70	90	90	90	90	90	90
接管尺寸 Fitting ID Size (mm)	排气管 Dis.Tube	12.94-13.10		22.37-22.51				28.81-28.95	
	吸气管 Suc.Tube	22.37-22.51		34.97-35.10					
外形尺寸 Dimension (mm)	长(L)	246.65		284.5				296.05	
	宽(W)	230.5		235.5				286.05	
	高(H)	442.7		522.7				653.7	
底脚安装尺寸 Mounting Dim. (mm)		190.5x190.5							
润滑油类型 Lubrication Oil		POE							
润滑油初次充注量 Lubrication Oil Initial Charge (L)		1.8	1.8	3.0	3.0	3.2	3.2	5.0	5.0
润滑油重新充注量 Lubrication Oil Recharge (L)		1.6	1.6	3.0	3.0	3.0	3.0	4.8	4.8
最大工作压力 Maxium Operating Pressure (MPa)	高压侧 High Pressure Side	3							
	低压侧 Low Pressure Side	2							
重量 Weight (kg)		38	38	66	66	66	66	92	92

注: 蒸发温度 -31.7°C, 冷凝温度 40.6°C, 吸气温度 20°C, 无过冷度
Note: E.T. -31.7 °C, C.T. 40.6 °C, R.G. 20°C, No Subcooling

型号 Model	WF06KE-PFJ-GL1	WF09KE-PFJ-GL1	WF13KE-PFJ-GL1	WF06KE-TFD-GL1	WF09KE-TFD-GL1	WF13KE-TFD-GL1	WF15KE-TFD-GL1
电制 Motor Power	220-240V/1~/50Hz			380-420V/3~/50Hz or 460V/3~/60Hz			
名义功率 Nominal Power (HP)	2	3	4	2	3	4	5
排量 Displacement (cc/Rev)	37.2	50.6	63.9	37.2	50.6	63.9	84.5
制冷剂 Refrigerant	R455A						
名义制冷量 Nominal Capacity (W)	1722	2345	2975	1725	2346	2962	3917
名义输入功率 Nominal Power (W)	1424	1881	2375	1342	1826	2306	3049
名义工况能效比 COP (W/W)	1.21	1.25	1.25	1.29	1.28	1.28	1.28
名义工况电流 Nominal Operating Current (A)	7.5	9.9	12.6	2.4	3.2	4.1	5.4
堵转电流 LRA (A)	76	76	108	38.8	38.8	38.8	83.6
最大运行电流 MOC (A)	10.6	14.1	17.7	3.4	4.6	5.8	7.6
曲轴箱加热器功率 Crankcase Heater (W)	70	70	70	70	70	70	70
接管尺寸 Fitting ID Size (mm)	排气管 Dis.Tube	12.94-13.10					
	吸气管 Suc.Tube	22.37-22.51					
外形尺寸 Dimension (mm)	长(L)	241.67					246.65
	宽(W)	230.5					230.5
	高(H)	403.4					442.7
底脚安装尺寸 Mounting Dim. (mm)	190.5x190.5						
润滑油类型 Lubrication Oil	POE						
润滑油初次充注量 Lubrication Oil Initial Charge (L)	1.4	1.4	1.4	1.4	1.4	1.4	1.8
润滑油重新充注量 Lubrication Oil Recharge (L)	1.2	1.2	1.2	1.2	1.2	1.2	1.6
最大工作压力 Maxium Operating Pressure (MPa)	高压侧 High Pressure Side	3					
	低压侧 Low Pressure Side	2					
重量 Weight (kg)	31	31	31	28	28	28	37

注: 蒸发温度 -31.7°C, 冷凝温度 40.6°C, 吸气温度 20°C, 无过冷度
Note: E.T. -31.7 °C, C.T. 40.6 °C, R.G. 20°C, No Subcooling

型号 Model	WF18KE-TFD-GL1	WF25KE-TFD-GL1	WF28KE-TFD-GL1	WF34KE-TFD-GL1	WF38KE-TFD-GL1	WF49KE-TFD-GL1	WF60KE-TWD-GL1	WF75KE-TWD-GL1
电制 Motor Power	380-420V/3~/50Hz or 460V/3~/60Hz							
名义功率 Nominal Power (HP)	6	7	8	10	12	15	20	25
排量 Displacement (cc/Rev)	98.9	108	127	165.5	190.8	248.9	325	400
制冷剂 Refrigerant	R455A							
名义制冷量 Nominal Capacity (W)	4585	5007	5888	7672	8845	11539	15067	18543
名义输入功率 Nominal Power (W)	3569	3897	4583	5972	6885	8982	11728	14434
名义工况能效比 COP (W/W)	1.28	1.28	1.28	1.28	1.28	1.28	1.28	1.28
名义工况电流 Nominal Operating Current (A)	6.3	6.9	8.1	10.6	12.2	15.9	20.7	25.5
堵转电流 LRA (A)	83.6	83.6	117	117	117	117	267.9	267.9
最大运行电流 MOC (A)	8.9	9.7	11.4	14.9	17.2	22.4	29.3	36.1
曲轴箱加热器功率 Crankcase Heater (W)	70	70	90	90	90	90	90	90
接管尺寸 Fitting ID Size (mm)	排气管 Dis.Tube	12.94-13.10		22.37-22.51			28.81-28.95	
	吸气管 Suc.Tube	22.37-22.51		34.97-35.10				
外形尺寸 Dimension (mm)	长(L)	246.65		284.5			296.05	
	宽(W)	230.5		235.5			286.05	
	高(H)	442.7		522.7			653.7	
底脚安装尺寸 Mounting Dim. (mm)	190.5x190.5							
润滑油类型 Lubrication Oil	POE							
润滑油初次充注量 Lubrication Oil Initial Charge (L)	1.8	1.8	3.0	3.0	3.2	3.2	5.0	5.0
润滑油重新充注量 Lubrication Oil Recharge (L)	1.6	1.6	3.0	3.0	3.0	3.0	4.8	4.8
最大工作压力 Maxium Operating Pressure (MPa)	高压侧 High Pressure Side	3						
	低压侧 Low Pressure Side	2						
重量 Weight (kg)	38	38	66	66	66	66	92	92

注: 蒸发温度 -31.7°C, 冷凝温度 40.6°C, 吸气温度 20°C, 无过冷度
Note: E.T. -31.7 °C, C.T. 40.6 °C, R.G. 20°C, No Subcooling

型号Model	项目Item (kW)	Tc\Te	-40°C	-35°C	-30°C	-25°C	-20°C	-15°C	-10°C	-5°C	0°C	
WF06KE-PFJ-GL1	Q	60°C						2.13	2.56	3.09	3.76	
	P						2.34	2.45	2.56	2.69		
	Q	55°C	0.88	1.17	1.45	1.75	2.09	2.5	3	3.6	4.35	
	P		1.61	1.75	1.87	1.97	2.07	2.17	2.27	2.38	2.51	
	Q	50°C	1.02	1.32	1.63	1.97	2.35	2.81	3.37	4.05	4.87	
	P		1.5	1.62	1.72	1.81	1.9	1.99	2.09	2.2	2.33	
	Q	45°C	1.11	1.43	1.77	2.14	2.57	3.08	3.69	4.44	5.33	
	P		1.38	1.49	1.58	1.66	1.74	1.82	1.92	2.03	2.17	
	Q	40°C	1.18	1.52	1.87	2.28	2.74	3.3	3.97	4.78	5.75	
	P		1.27	1.36	1.43	1.51	1.58	1.66	1.76	1.87	2.01	
	Q	35°C	1.23	1.58	1.96	2.39	2.89	3.5	4.22	5.09	6.13	
	P		1.16	1.23	1.3	1.36	1.43	1.51	1.61	1.73	1.88	
	Q	30°C	1.28	1.64	2.04	2.49	3.03	3.68	4.45	5.38	6.49	
	P		1.05	1.11	1.17	1.23	1.3	1.38	1.48	1.6	1.76	
	Q	25°C	1.33	1.7	2.12	2.6	3.17	3.85	4.68	5.66	6.83	
	P		0.96	1.01	1.06	1.11	1.18	1.26	1.37	1.5	1.67	
	Q	20°C	1.41	1.78	2.21	2.71	3.31	4.04	4.91	5.95	7.18	
	P		0.88	0.92	0.97	1.02	1.08	1.17	1.28	1.42	1.61	
	Q	15°C	1.51	1.89	2.33	2.85	3.48	4.24	5.15	6.24		
	P		0.81	0.85	0.89	0.94	1.01	1.1	1.22	1.38		
	Q	10°C	1.66	2.04	2.48	3.02	3.67	4.47	5.42			
	P		0.77	0.8	0.84	0.89	0.97	1.06	1.19			
	WF09KE-PFJ-GL1	Q	60°C						2.89	3.48	4.21	5.12
		P						3.1	3.24	3.39	3.56	
Q		55°C	1.2	1.59	1.98	2.38	2.85	3.4	4.08	4.9	5.92	
P			2.13	2.31	2.47	2.61	2.74	2.86	3	3.14	3.31	
Q		50°C	1.38	1.8	2.22	2.68	3.2	3.83	4.58	5.51	6.62	
P			1.98	2.14	2.27	2.4	2.51	2.63	2.76	2.91	3.08	
Q		45°C	1.51	1.95	2.41	2.91	3.49	4.18	5.02	6.03	7.25	
P			1.83	1.96	2.08	2.19	2.29	2.41	2.53	2.68	2.86	
Q		40°C	1.6	2.06	2.55	3.1	3.73	4.49	5.4	6.5	7.82	
P			1.68	1.79	1.89	1.99	2.09	2.19	2.32	2.47	2.66	
Q		35°C	1.67	2.15	2.67	3.25	3.94	4.76	5.74	6.93	8.34	
P			1.53	1.63	1.71	1.8	1.89	2	2.12	2.28	2.48	
Q		30°C	1.73	2.23	2.77	3.39	4.13	5	6.06	7.32	8.83	
P			1.39	1.47	1.55	1.63	1.71	1.82	1.95	2.12	2.33	
Q		25°C	1.81	2.32	2.88	3.53	4.31	5.24	6.36	7.7	9.3	
P			1.26	1.33	1.4	1.47	1.56	1.67	1.81	1.98	2.21	
Q		20°C	1.91	2.43	3.01	3.69	4.51	5.49	6.67	8.09	9.77	
P			1.16	1.21	1.27	1.34	1.43	1.54	1.69	1.88	2.12	
Q		15°C	2.06	2.57	3.17	3.88	4.73	5.76	7.01	8.49		
P			1.07	1.12	1.18	1.25	1.34	1.46	1.61	1.82		
Q		10°C	2.26	2.77	3.38	4.11	5	6.08	7.37			
P			1.02	1.06	1.11	1.18	1.28	1.4	1.58			
WF13KE-PFJ-GL1		Q	60°C						3.65	4.39	5.32	6.46
		P						3.91	4.09	4.28	4.49	
	Q	55°C	1.52	2.01	2.5	3.01	3.6	4.3	5.15	6.19	7.47	
	P		2.69	2.92	3.12	3.29	3.45	3.61	3.78	3.97	4.19	
	Q	50°C	1.74	2.27	2.8	3.38	4.04	4.83	5.79	6.95	8.37	
	P		2.5	2.7	2.87	3.03	3.17	3.32	3.48	3.67	3.89	
	Q	45°C	1.9	2.46	3.04	3.67	4.41	5.29	6.34	7.62	9.16	
	P		2.31	2.48	2.63	2.76	2.9	3.04	3.2	3.39	3.61	
	Q	40°C	2.02	2.6	3.22	3.91	4.71	5.67	6.82	8.21	9.88	
	P		2.12	2.26	2.39	2.51	2.63	2.77	2.93	3.12	3.36	
	Q	35°C	2.11	2.71	3.37	4.11	4.97	6.01	7.25	8.75	10.53	
	P		1.93	2.05	2.16	2.27	2.39	2.52	2.68	2.88	3.13	
	Q	30°C	2.19	2.81	3.5	4.28	5.21	6.32	7.65	9.25	11.15	
	P		1.75	1.86	1.95	2.05	2.16	2.3	2.46	2.68	2.94	
	Q	25°C	2.29	2.92	3.63	4.46	5.44	6.62	8.03	9.73	11.74	
	P		1.6	1.68	1.77	1.86	1.97	2.11	2.28	2.5	2.79	
	Q	20°C	2.42	3.06	3.79	4.66	5.69	6.93	8.43	10.21	12.33	
	P		1.46	1.53	1.61	1.7	1.81	1.95	2.14	2.38	2.68	
	Q	15°C	2.6	3.25	4	4.89	5.97	7.28	8.85	10.72		
	P		1.35	1.42	1.49	1.57	1.69	1.84	2.04	2.29		
	Q	10°C	2.85	3.5	4.26	5.19	6.31	7.67	9.31			
	P		1.28	1.34	1.4	1.49	1.61	1.77	1.99			

性能参数基于吸气温度20.0°C，过冷度0.0K。
Performance Based on Return Gas Temp. 20.0°C and Subcooling 0.0K.

型号Model	项目Item (kW)	Tc\Te	-40°C	-35°C	-30°C	-25°C	-20°C	-15°C	-10°C	-5°C	0°C	
WF06KE-TFD-GL1	Q	60°C						2.13	2.56	3.09	3.76	
	P						2.21	2.31	2.42	2.54		
	Q	55°C	0.89	1.17	1.45	1.75	2.1	2.5	3	3.61	4.35	
	P		1.52	1.65	1.76	1.86	1.95	2.04	2.14	2.24	2.36	
	Q	50°C	1.02	1.32	1.63	1.97	2.36	2.82	3.37	4.05	4.87	
	P		1.41	1.53	1.62	1.71	1.79	1.88	1.97	2.07	2.2	
	Q	45°C	1.11	1.43	1.77	2.14	2.57	3.08	3.69	4.44	5.33	
	P		1.3	1.4	1.49	1.56	1.64	1.72	1.81	1.91	2.04	
	Q	40°C	1.18	1.52	1.87	2.28	2.74	3.3	3.97	4.78	5.75	
	P		1.2	1.28	1.35	1.42	1.49	1.57	1.66	1.76	1.9	
	Q	35°C	1.23	1.58	1.96	2.39	2.89	3.5	4.22	5.09	6.13	
	P		1.09	1.16	1.22	1.28	1.35	1.43	1.52	1.63	1.77	
	Q	30°C	1.28	1.64	2.03	2.49	3.03	3.68	4.45	5.38	6.49	
	P		0.99	1.05	1.1	1.16	1.22	1.3	1.39	1.51	1.66	
	Q	25°C	1.33	1.7	2.11	2.59	3.17	3.85	4.68	5.66	6.83	
	P		0.9	0.95	1	1.05	1.11	1.19	1.29	1.42	1.57	
	Q	20°C	1.4	1.78	2.2	2.71	3.31	4.03	4.91	5.95	7.18	
	P		0.83	0.87	0.91	0.96	1.02	1.1	1.21	1.34	1.51	
	Q	15°C	1.51	1.89	2.32	2.85	3.47	4.24	5.15	6.24		
	P		0.77	0.8	0.84	0.89	0.95	1.04	1.15	1.3		
	Q	10°C	1.66	2.03	2.48	3.02	3.67	4.47	5.42			
	P		0.72	0.75	0.79	0.84	0.91	1	1.12			
	WF09KE-TFD-GL1	Q	60°C						2.89	3.48	4.21	5.11
		P						3.01	3.14	3.29	3.45	
Q		55°C	1.2	1.59	1.98	2.39	2.85	3.4	4.08	4.9	5.91	
P			2.07	2.24	2.4	2.53	2.66	2.78	2.91	3.05	3.22	
Q		50°C	1.38	1.8	2.22	2.68	3.2	3.83	4.59	5.51	6.62	
P			1.92	2.08	2.21	2.33	2.44	2.55	2.68	2.82	2.99	
Q		45°C	1.51	1.95	2.41	2.91	3.49	4.18	5.02	6.03	7.25	
P			1.77	1.91	2.02	2.13	2.23	2.34	2.46	2.6	2.78	
Q		40°C	1.6	2.06	2.55	3.1	3.73	4.49	5.4	6.5	7.82	
P			1.63	1.74	1.84	1.93	2.03	2.13	2.25	2.4	2.58	
Q		35°C	1.67	2.15	2.66	3.25	3.94	4.76	5.74	6.93	8.34	
P			1.48	1.58	1.66	1.75	1.84	1.94	2.06	2.22	2.41	
Q		30°C	1.73	2.23	2.77	3.39	4.13	5	6.06	7.32	8.83	
P			1.35	1.43	1.5	1.58	1.66	1.77	1.9	2.06	2.26	
Q		25°C	1.81	2.31	2.87	3.53	4.31	5.24	6.36	7.7	9.3	
P			1.23	1.29	1.36	1.43	1.51	1.62	1.75	1.93	2.14	
Q		20°C	1.91	2.42	3	3.68	4.5	5.49	6.67	8.09	9.77	
P			1.12	1.18	1.24	1.3	1.39	1.5	1.64	1.83	2.06	
Q		15°C	2.05	2.57	3.16	3.87	4.73	5.76	7.01	8.49		
P			1.04	1.09	1.14	1.21	1.3	1.41	1.57	1.76		
Q		10°C	2.25	2.77	3.37	4.11	5	6.08	7.38			
P			0.99	1.03	1.08	1.14	1.24	1.36	1.53			
WF13KE-TFD-GL1		Q	60°C						3.65	4.39	5.32	6.45
		P						3.8	3.97	4.15	4.36	
	Q	55°C	1.52	2.01	2.5	3.01	3.6	4.3	5.15	6.19	7.47	
	P		2.61	2.84	3.03	3.2	3.35	3.51	3.67	3.85	4.06	
	Q	50°C	1.75	2.27	2.81	3.38	4.05	4.84	5.79	6.95	8.36	
	P		2.43	2.62	2.79	2.94	3.08	3.23	3.38	3.56	3.78	
	Q	45°C	1.91	2.46	3.04	3.68	4.41	5.29	6.34	7.62	9.16	
	P		2.24	2.41	2.55	2.68	2.81	2.95	3.11	3.29	3.51	
	Q	40°C	2.02	2.6	3.22	3.91	4.71	5.67	6.82	8.21	9.88	
	P		2.05	2.2	2.32	2.44	2.56	2.69	2.84	3.03	3.26	
	Q	35°C	2.11	2.71	3.36	4.1	4.97					

型号Model	项目Item (kW)	Tc\Te	-40°C	-35°C	-30°C	-25°C	-20°C	-15°C	-10°C	-5°C	0°C
WF15KE-TFD-GL1	Q	60°C						4.83	5.81	7.03	8.54
	P							5.02	5.25	5.49	5.76
	Q	55°C	2.01	2.66	3.3	3.98	4.76	5.68	6.81	8.19	9.88
	P		3.45	3.75	4	4.23	4.44	4.64	4.86	5.1	5.37
	Q	50°C	2.31	3.01	3.71	4.47	5.35	6.39	7.66	9.2	11.06
	P		3.21	3.47	3.69	3.89	4.07	4.27	4.47	4.71	4.99
	Q	45°C	2.52	3.26	4.02	4.86	5.83	6.99	8.39	10.08	12.11
	P		2.96	3.18	3.37	3.55	3.72	3.9	4.11	4.35	4.64
	Q	40°C	2.67	3.44	4.26	5.17	6.23	7.5	9.02	10.86	13.06
	P		2.72	2.9	3.07	3.22	3.38	3.56	3.76	4.01	4.31
	Q	35°C	2.79	3.59	4.45	5.43	6.57	7.94	9.59	11.57	13.93
	P		2.48	2.64	2.78	2.92	3.07	3.24	3.44	3.7	4.02
	Q	30°C	2.9	3.72	4.62	5.66	6.88	8.35	10.11	12.23	14.74
	P		2.25	2.38	2.51	2.63	2.78	2.95	3.16	3.44	3.77
	Q	25°C	3.02	3.86	4.8	5.89	7.19	8.75	10.62	12.86	15.53
	P		2.05	2.16	2.27	2.39	2.53	2.7	2.93	3.22	3.58
	Q	20°C	3.19	4.04	5.01	6.15	7.52	9.16	11.14	13.51	16.31
	P		1.88	1.97	2.07	2.18	2.32	2.5	2.74	3.05	3.44
	Q	15°C	3.43	4.28	5.28	6.46	7.89	9.62	11.7	14.18	
	P		1.74	1.82	1.91	2.02	2.16	2.36	2.62	2.95	
Q	10°C	3.76	4.62	5.63	6.86	8.34	10.15	12.32			
P		1.65	1.71	1.8	1.91	2.07	2.28	2.55			
Q	60°C							5.65	6.8	8.23	9.99
P								5.88	6.14	6.43	6.75
Q	55°C	2.36	3.12	3.87	4.66	5.57	6.65	7.97	9.58	11.56	
P		4.04	4.39	4.68	4.95	5.19	5.43	5.68	5.96	6.29	
Q	50°C	2.71	3.52	4.34	5.24	6.26	7.48	8.96	10.76	12.95	
P		3.76	4.06	4.32	4.55	4.77	4.99	5.24	5.52	5.85	
Q	45°C	2.95	3.81	4.71	5.69	6.83	8.18	9.82	11.8	14.18	
P		3.47	3.73	3.95	4.15	4.35	4.57	4.81	5.09	5.43	
Q	40°C	3.13	4.03	4.98	6.05	7.29	8.78	10.56	12.71	15.28	
P		3.18	3.4	3.59	3.77	3.96	4.16	4.4	4.69	5.05	
Q	35°C	3.26	4.2	5.21	6.35	7.69	9.3	11.22	13.54	16.3	
P		2.9	3.08	3.25	3.41	3.59	3.79	4.03	4.33	4.71	
Q	30°C	3.39	4.35	5.41	6.62	8.06	9.78	11.84	14.31	17.25	
P		2.64	2.79	2.94	3.08	3.25	3.45	3.7	4.02	4.42	
Q	25°C	3.54	4.52	5.62	6.89	8.42	10.24	12.43	15.06	18.17	
P		2.4	2.53	2.66	2.79	2.96	3.16	3.43	3.76	4.19	
Q	20°C	3.73	4.73	5.86	7.2	8.8	10.73	13.04	15.81	19.09	
P		2.2	2.3	2.42	2.55	2.72	2.93	3.21	3.57	4.03	
Q	15°C	4.01	5.01	6.18	7.57	9.24	11.26	13.69	16.6		
P		2.04	2.13	2.23	2.36	2.53	2.76	3.06	3.45		
Q	10°C	4.4	5.41	6.59	8.03	9.76	11.88	14.42			
P		1.93	2.01	2.1	2.24	2.42	2.66	2.99			
Q	60°C							6.17	7.43	8.98	10.91
P								6.42	6.71	7.02	7.37
Q	55°C	2.57	3.4	4.22	5.09	6.08	7.26	8.7	10.47	12.62	
P		4.41	4.79	5.12	5.4	5.67	5.93	6.21	6.51	6.87	
Q	50°C	2.95	3.84	4.74	5.72	6.84	8.17	9.79	11.75	14.14	
P		4.11	4.43	4.71	4.97	5.21	5.45	5.72	6.02	6.38	
Q	45°C	3.23	4.17	5.14	6.21	7.46	8.94	10.72	12.88	15.48	
P		3.79	4.07	4.31	4.54	4.76	4.99	5.25	5.56	5.93	
Q	40°C	3.42	4.4	5.44	6.61	7.97	9.58	11.53	13.88	16.69	
P		3.47	3.71	3.92	4.12	4.32	4.55	4.81	5.12	5.51	
Q	35°C	3.57	4.59	5.69	6.94	8.4	10.15	12.26	14.78	17.8	
P		3.17	3.37	3.55	3.73	3.92	4.14	4.4	4.73	5.14	
Q	30°C	3.7	4.75	5.91	7.23	8.8	10.67	12.93	15.63	18.84	
P		2.88	3.05	3.21	3.37	3.55	3.77	4.05	4.39	4.82	
Q	25°C	3.86	4.93	6.13	7.53	9.19	11.18	13.58	16.44	19.84	
P		2.62	2.76	2.9	3.05	3.23	3.46	3.74	4.11	4.57	
Q	20°C	4.08	5.16	6.4	7.86	9.61	11.71	14.24	17.26	20.85	
P		2.4	2.52	2.64	2.78	2.96	3.2	3.51	3.9	4.4	
Q	15°C	4.38	5.48	6.75	8.26	10.09	12.3	14.95	18.13		
P		2.22	2.32	2.44	2.58	2.77	3.01	3.34	3.77		
Q	10°C	4.81	5.9	7.2	8.76	10.66	12.97	15.74			
P		2.1	2.19	2.3	2.44	2.64	2.91	3.26			

性能参数基于吸气温度20.0°C, 过冷度0.0K。
Performance Based on Return Gas Temp. 20.0°C and Subcooling 0.0K.

型号Model	项目Item (kW)	Tc\Te	-40°C	-35°C	-30°C	-25°C	-20°C	-15°C	-10°C	-5°C	0°C	
WF28KE-TFD-GL1	Q	60°C							7.26	8.73	10.56	12.83
	P								7.54	7.89	8.25	8.66
	Q	55°C	3.02	4	4.96	5.99	7.15	8.54	10.23	12.31	14.85	
	P		5.19	5.63	6.02	6.35	6.67	6.97	7.3	7.66	8.07	
	Q	50°C	3.47	4.52	5.58	6.72	8.04	9.61	11.51	13.82	16.62	
	P		4.83	5.21	5.54	5.84	6.12	6.41	6.73	7.08	7.51	
	Q	45°C	3.79	4.9	6.04	7.31	8.77	10.51	12.61	15.15	18.21	
	P		4.45	4.79	5.07	5.33	5.59	5.86	6.17	6.53	6.97	
	Q	40°C	4.02	5.18	6.4	7.77	9.37	11.27	13.56	16.32	19.63	
	P		4.08	4.36	4.61	4.84	5.08	5.35	5.65	6.02	6.48	
	Q	35°C	4.19	5.39	6.69	8.16	9.88	11.94	14.41	17.38	20.93	
	P		3.72	3.96	4.17	4.38	4.61	4.87	5.18	5.56	6.04	
	Q	30°C	4.35	5.59	6.94	8.5	10.35	12.55	15.2	18.38	22.15	
	P		3.38	3.58	3.77	3.96	4.17	4.43	4.76	5.16	5.67	
	Q	25°C	4.54	5.8	7.21	8.85	10.81	13.15	15.97	19.33	23.33	
	P		3.08	3.25	3.41	3.59	3.8	4.06	4.4	4.83	5.38	
	Q	20°C	4.79	6.07	7.53	9.24	11.3	13.77	16.75	20.3	24.52	
	P		2.82	2.96	3.1	3.27	3.49	3.76	4.12	4.58	5.17	
	Q	15°C	5.15	6.44	7.93	9.71	11.86	14.46	17.58	21.32		
	P		2.61	2.73	2.87	3.03	3.25	3.54	3.93	4.43		
Q	10°C	5.66	6.94	8.47	10.31	12.54	15.25	18.51				
P		2.47	2.58	2.7	2.87	3.1	3.42	3.84				
Q	60°C							9.46	11.38	13.77	16.72	
P								9.83	10.28	10.75	11.29	
Q	55°C	3.94	5.22	6.47	7.8	9.32	11.13	13.34	16.04	19.35		
P		6.76	7.34	7.84	8.28	8.69	9.09	9.51	9.98	10.52		
Q	50°C	4.53	5.89	7.27	8.76	10.48	12.52	15	18.01	21.66		
P		6.29	6.79	7.22	7.61	7.98	8.36	8.76	9.23	9.78		
Q	45°C	4.94	6.38	7.87	9.52	11.42	13.69	16.43	19.74	23.72		
P		5.81	6.24	6.61	6.95	7.29	7.64	8.04	8.52	9.08		
Q	40°C	5.24	6.74	8.34	10.12	12.21	14.69	17.67	21.27	25.58		
P		5.32	5.69	6.01	6.31	6.62	6.97	7.37	7.85	8.44		
Q	35°C	5.46	7.03	8.71	10.63	12.87	15.56	18.78	22.65	27.27		
P		4.85	5.16	5.44	5.71	6	6.34	6.75	7.25	7.88		
Q	30°C	5.67	7.28	9.05	11.08	13.48	16.36	19.81	23.95	28.87		
P		4.41	4.67	4.91	5.16	5.44	5.78	6.2	6.73	7.39		
Q	25°C	5.92	7.56	9.4	11.54	14.08	17.14	20.81	25.2	30.41		
P		4.01	4.23	4.44	4.67	4.95	5.29	5.74	6.3	7.01		
Q	20°C	6.25	7.91	9.81	12.05	14.72	17.95	21.82	26.46			

型号Model	项目Item (kW)	Tc\Te	-40°C	-35°C	-30°C	-25°C	-20°C	-15°C	-10°C	-5°C	0°C
WF49KE-TFD-GL1	Q	60°C						14.23	17.12	20.7	25.14
	P						14.79	15.45	16.17	16.98	
	Q	55°C	5.93	7.85	9.73	11.73	14.02	16.74	20.05	24.12	29.1
	P		10.17	11.04	11.79	12.45	13.06	13.67	14.31	15.01	15.82
	Q	50°C	6.81	8.86	10.93	13.18	15.76	18.84	22.56	27.09	32.58
	P		9.46	10.21	10.86	11.45	12	12.57	13.18	13.88	14.71
	Q	45°C	7.43	9.6	11.84	14.32	17.18	20.59	24.71	29.69	35.68
	P		8.73	9.38	9.94	10.45	10.96	11.49	12.1	12.81	13.66
	Q	40°C	7.88	10.14	12.54	15.23	18.36	22.09	26.58	31.99	38.47
	P		8	8.55	9.04	9.49	9.96	10.48	11.08	11.81	12.7
	Q	35°C	8.22	10.57	13.1	15.98	19.36	23.4	28.25	34.07	41.02
	P		7.29	7.76	8.18	8.59	9.03	9.53	10.15	10.9	11.84
	Q	30°C	8.53	10.95	13.61	16.67	20.28	24.6	29.79	36.01	43.42
	P		6.63	7.02	7.39	7.76	8.18	8.69	9.32	10.12	11.12
	Q	25°C	8.9	11.37	14.13	17.35	21.18	25.77	31.29	37.89	45.73
	P		6.04	6.36	6.68	7.03	7.44	7.96	8.63	9.47	10.54
	Q	20°C	9.39	11.9	14.75	18.12	22.14	26.99	32.82	39.79	48.05
	P		5.53	5.8	6.08	6.42	6.83	7.37	8.08	8.98	10.13
	Q	15°C	10.1	12.62	15.55	19.04	23.25	28.34	34.46	41.78	
	P		5.12	5.36	5.62	5.94	6.37	6.95	7.7	8.68	
	Q	10°C	11.08	13.61	16.59	20.2	24.58	29.89	36.29		
	P		4.85	5.05	5.3	5.63	6.08	6.7	7.52		
	Q	60°C						18.57	22.35	27.03	32.83
	P							19.31	20.18	21.12	22.17
Q	55°C	7.74	10.24	12.7	15.32	18.3	21.86	26.19	31.5	37.99	
P		13.28	14.42	15.39	16.26	17.06	17.85	18.68	19.6	20.66	
Q	50°C	8.89	11.57	14.27	17.21	20.58	24.6	29.46	35.37	42.54	
P		12.35	13.34	14.18	14.94	15.67	16.41	17.21	18.13	19.21	
Q	45°C	9.71	12.54	15.46	18.7	22.44	26.89	32.26	38.76	46.59	
P		11.4	12.25	12.98	13.65	14.31	15.01	15.8	16.72	17.84	
Q	40°C	10.28	13.25	16.38	19.88	23.97	28.84	34.71	41.77	50.23	
P		10.45	11.17	11.8	12.4	13.01	13.68	14.47	15.42	16.58	
Q	35°C	10.73	13.8	17.11	20.87	25.28	30.55	36.88	44.49	53.56	
P		9.53	10.13	10.68	11.22	11.79	12.45	13.25	14.24	15.46	
Q	30°C	11.14	14.3	17.77	21.76	26.48	32.12	38.9	47.02	56.69	
P		8.66	9.17	9.65	10.13	10.68	11.35	12.17	13.21	14.51	
Q	25°C	11.62	14.84	18.45	22.66	27.65	33.65	40.86	49.48	59.71	
P		7.88	8.31	8.73	9.18	9.72	10.4	11.26	12.37	13.76	
Q	20°C	12.27	15.54	19.26	23.65	28.91	35.25	42.86	51.95	62.74	
P		7.21	7.57	7.94	8.38	8.92	9.63	10.55	11.73	13.23	
Q	15°C	13.18	16.48	20.3	24.86	30.36	37	45	54.55		
P		6.69	6.99	7.33	7.76	8.32	9.07	10.06	11.33		
Q	10°C	14.47	17.77	21.67	26.37	32.09	39.02	47.38			
P		6.33	6.59	6.92	7.35	7.94	8.75	9.82			
Q	60°C						22.86	27.51	33.27	40.41	
P							23.76	24.84	25.99	27.29	
Q	55°C	9.53	12.61	15.63	18.86	22.53	26.9	32.23	38.76	46.76	
P		16.35	17.75	18.95	20.01	20.99	21.97	22.99	24.12	25.43	
Q	50°C	10.94	14.24	17.57	21.18	25.33	30.27	36.26	43.53	52.36	
P		15.21	16.42	17.46	18.39	19.28	20.19	21.18	22.31	23.64	
Q	45°C	11.95	15.43	19.03	23.01	27.61	33.1	39.71	47.71	57.34	
P		14.03	15.07	15.97	16.8	17.61	18.47	19.44	20.58	21.96	
Q	40°C	12.66	16.3	20.16	24.47	29.5	35.5	42.71	51.4	61.82	
P		12.86	13.75	14.52	15.26	16.01	16.84	17.81	18.98	20.41	
Q	35°C	13.2	16.98	21.06	25.69	31.12	37.6	45.4	54.75	65.92	
P		11.72	12.47	13.15	13.8	14.51	15.32	16.31	17.52	19.03	
Q	30°C	13.71	17.6	21.87	26.78	32.59	39.54	47.88	57.87	69.77	
P		10.66	11.29	11.87	12.47	13.15	13.97	14.98	16.26	17.86	
Q	25°C	14.3	18.27	22.71	27.88	34.04	41.42	50.29	60.9	73.49	
P		9.7	10.23	10.74	11.3	11.96	12.8	13.86	15.22	16.94	
Q	20°C	15.1	19.12	23.71	29.11	35.59	43.38	52.75	63.94	77.22	
P		8.88	9.32	9.78	10.31	10.98	11.85	12.98	14.44	16.28	
Q	15°C	16.23	20.28	24.99	30.6	37.36	45.54	55.38	67.14		
P		8.23	8.61	9.02	9.55	10.24	11.16	12.38	13.95		
Q	10°C	17.81	21.87	26.67	32.46	39.49	48.03	58.31			
P		7.79	8.12	8.51	9.04	9.78	10.77	12.08			

性能参数基于吸气温度20.0°C，过冷度0.0K。
Performance Based on Return Gas Temp. 20.0°C and Subcooling 0.0K.

型号Model	项目Item (kW)	Tc\Te	-40°C	-35°C	-30°C	-25°C	-20°C	-15°C	-10°C	-5°C	0°C
WF06KE-PFJ-GL1	Q	60°C						2.15	2.59	3.13	3.8
	P						2.32	2.43	2.54	2.67	
	Q	55°C	0.89	1.18	1.47	1.77	2.12	2.53	3.03	3.64	4.4
	P		1.6	1.73	1.85	1.96	2.05	2.15	2.25	2.36	2.49
	Q	50°C	1.03	1.34	1.65	1.99	2.38	2.84	3.41	4.09	4.92
	P		1.49	1.6	1.71	1.8	1.88	1.97	2.07	2.18	2.31
	Q	45°C	1.12	1.45	1.79	2.16	2.59	3.11	3.73	4.48	5.39
	P		1.37	1.47	1.56	1.64	1.72	1.8	1.9	2.01	2.15
	Q	40°C	1.19	1.53	1.89	2.3	2.77	3.34	4.01	4.83	5.81
	P		1.26	1.34	1.42	1.49	1.56	1.65	1.74	1.85	1.99
	Q	35°C	1.24	1.6	1.98	2.41	2.92	3.53	4.27	5.15	6.2
	P		1.15	1.22	1.28	1.35	1.42	1.5	1.59	1.71	1.86
	Q	30°C	1.29	1.66	2.06	2.52	3.06	3.72	4.5	5.44	6.56
	P		1.04	1.1	1.16	1.22	1.28	1.36	1.46	1.59	1.75
	Q	25°C	1.35	1.72	2.14	2.62	3.2	3.89	4.73	5.72	6.91
	P		0.95	1	1.05	1.1	1.17	1.25	1.35	1.49	1.65
	Q	20°C	1.42	1.8	2.23	2.74	3.35	4.08	4.96	6.01	7.26
	P		0.87	0.91	0.96	1.01	1.07	1.16	1.27	1.41	1.59
	Q	15°C	1.53	1.91	2.35	2.88	3.51	4.28	5.2	6.31	
	P		0.8	0.84	0.88	0.93	1	1.09	1.21	1.36	
	Q	10°C	1.68	2.06	2.51	3.05	3.71	4.51	5.48		
	P		0.76	0.79	0.83	0.89	0.96	1.05	1.18		
	Q	60°C						2.92	3.52	4.26	5.17
	P							3.07	3.2	3.35	3.52
Q	55°C	1.21	1.61	2	2.41	2.88	3.44	4.12	4.96	5.98	
P		2.11	2.29	2.44	2.58	2.71	2.83	2.97	3.11	3.28	
Q	50°C	1.39	1.82	2.24	2.71	3.24	3.87	4.63	5.56	6.69	
P		1.96	2.12	2.25	2.37	2.49	2.61	2.73	2.88	3.05	
Q	45°C	1.52	1.97	2.43	2.94	3.53	4.23	5.07	6.1	7.33	
P		1.81	1.94	2.06	2.17	2.27	2.38	2.51	2.66	2.83	
Q	40°C	1.62	2.08	2.58	3.13	3.77	4.54	5.46	6.57	7.9	
P		1.66	1.77	1.87	1.97	2.07	2.17	2.3	2.45	2.63	
Q	35°C	1.69	2.17	2.69	3.28	3.98	4.81	5.8	7	8.42	
P		1.51	1.61	1.7	1.78	1.87	1.98	2.1	2.26	2.46	
Q	30°C	1.75	2.25	2.8	3.43	4.17	5.05	6.12	7.4	8.92	
P		1.37	1.46	1.53	1.61	1.7	1.8	1.93	2.1	2.3	
Q	25°C	1.83	2.34	2.91	3.57	4.35	5.3	6.43	7.78	9.39	
P		1.25	1.32	1.39	1.46	1.54	1.65	1.79	1.96	2.18	
Q	20°C	1.93	2.45	3.04	3.73	4.55	5.55	6.74	8.17	9.87	
P		1.15	1.2	1.26	1.33	1.42	1.53	1.68	1.86	2.1	
Q	15°C	2.08	2.6	3.2	3.92	4.78	5.82	7.08	8.58		
P		1.06	1.11	1.17	1.23	1.32	1.44	1.6	1.8		
Q	10°C	2.28	2.8	3.41	4.15	5.05	6.14	7.45			
P		1.01	1.05	1.1	1.17	1.26	1.39	1.56			
Q	60°C						3.69	4.44	5.37	6.53	
P							3.87	4.05	4.24	4.45	
Q	55°C	1.53	2.03	2.52	3.04	3.63	4.34	5.2	6.26	7.55	
P		2.66	2.89	3.09	3.26	3.42	3.58	3.75	3.93	4.14	
Q	50°C	1.76	2.3	2.83	3.42	4.09	4.88	5.85	7.03	8.45	
P		2.48	2.68	2.85	3	3.14	3.29	3.45	3.64	3.85	
Q	45°C	1.92	2.49	3.07	3.71	4.46	5.34	6.41	7.7	9.26	
P		2.29	2.46								

型号Model	项目Item (KW)	Tc\Te	-40°C	-35°C	-30°C	-25°C	-20°C	-15°C	-10°C	-5°C	0°C	
WF06KE-TFD-GL1	Q	60°C						2.15	2.58	3.13	3.8	
	P						2.19	2.29	2.39	2.51		
	Q	55°C	0.89	1.18	1.47	1.77	2.12	2.53	3.03	3.64	4.4	
	P		1.51	1.63	1.75	1.84	1.93	2.02	2.12	2.22	2.34	
	Q	50°C	1.03	1.34	1.65	1.99	2.38	2.84	3.41	4.09	4.92	
	P		1.4	1.51	1.61	1.69	1.78	1.86	1.95	2.05	2.18	
	Q	45°C	1.12	1.45	1.79	2.16	2.59	3.11	3.73	4.48	5.39	
	P		1.29	1.39	1.47	1.55	1.62	1.7	1.79	1.9	2.02	
	Q	40°C	1.19	1.53	1.89	2.3	2.77	3.34	4.02	4.83	5.81	
	P		1.18	1.27	1.34	1.41	1.47	1.55	1.64	1.75	1.88	
	Q	35°C	1.24	1.6	1.98	2.42	2.93	3.54	4.27	5.15	6.2	
	P		1.08	1.15	1.21	1.27	1.34	1.41	1.5	1.61	1.75	
	Q	30°C	1.29	1.66	2.06	2.52	3.07	3.72	4.5	5.44	6.56	
	P		0.98	1.04	1.09	1.15	1.21	1.29	1.38	1.5	1.65	
	Q	25°C	1.35	1.72	2.14	2.63	3.2	3.9	4.73	5.73	6.91	
	P		0.89	0.94	0.99	1.04	1.1	1.18	1.28	1.4	1.56	
	Q	20°C	1.42	1.8	2.23	2.74	3.35	4.08	4.96	6.01	7.26	
	P		0.82	0.86	0.9	0.95	1.01	1.09	1.2	1.33	1.5	
	Q	15°C	1.53	1.91	2.35	2.88	3.52	4.28	5.21	6.31		
	P		0.76	0.79	0.83	0.88	0.94	1.03	1.14	1.28		
	Q	10°C	1.68	2.06	2.51	3.05	3.71	4.51	5.48			
	P		0.72	0.75	0.79	0.83	0.9	0.99	1.11			
	WF09KE-TFD-GL1	Q	60°C						2.92	3.52	4.25	5.17
		P						2.98	3.11	3.26	3.42	
Q		55°C	1.22	1.61	2	2.41	2.88	3.44	4.12	4.96	5.98	
P			2.05	2.22	2.37	2.51	2.63	2.75	2.88	3.02	3.19	
Q		50°C	1.4	1.82	2.24	2.71	3.24	3.87	4.63	5.57	6.69	
P			1.91	2.06	2.19	2.3	2.42	2.53	2.65	2.8	2.96	
Q		45°C	1.52	1.97	2.43	2.94	3.53	4.23	5.08	6.1	7.33	
P			1.76	1.89	2	2.1	2.21	2.31	2.44	2.58	2.75	
Q		40°C	1.62	2.08	2.58	3.13	3.77	4.54	5.46	6.57	7.9	
P			1.61	1.72	1.82	1.91	2.01	2.11	2.23	2.38	2.56	
Q		35°C	1.69	2.17	2.69	3.29	3.98	4.81	5.81	7	8.43	
P			1.47	1.56	1.65	1.73	1.82	1.92	2.04	2.2	2.38	
Q		30°C	1.75	2.25	2.8	3.43	4.17	5.06	6.12	7.4	8.92	
P			1.33	1.41	1.49	1.56	1.65	1.75	1.88	2.04	2.24	
Q		25°C	1.83	2.34	2.91	3.57	4.36	5.3	6.43	7.79	9.4	
P			1.21	1.28	1.35	1.42	1.5	1.6	1.74	1.91	2.12	
Q		20°C	1.93	2.45	3.04	3.73	4.56	5.55	6.75	8.18	9.87	
P			1.11	1.17	1.23	1.29	1.38	1.49	1.63	1.81	2.04	
Q		15°C	2.08	2.6	3.2	3.92	4.78	5.83	7.08	8.58		
P			1.03	1.08	1.13	1.2	1.28	1.4	1.55	1.75		
Q		10°C	2.28	2.8	3.41	4.15	5.05	6.14	7.45			
P			0.98	1.02	1.07	1.13	1.23	1.35	1.52			
WF13KE-TFD-GL1		Q	60°C						3.69	4.44	5.37	6.53
		P						3.76	3.93	4.11	4.32	
	Q	55°C	1.53	2.03	2.52	3.04	3.63	4.34	5.2	6.26	7.55	
	P		2.59	2.81	3	3.17	3.32	3.48	3.64	3.82	4.02	
	Q	50°C	1.76	2.29	2.83	3.42	4.09	4.89	5.85	7.03	8.45	
	P		2.41	2.6	2.76	2.91	3.05	3.19	3.35	3.53	3.74	
	Q	45°C	1.92	2.49	3.07	3.71	4.46	5.34	6.41	7.7	9.26	
	P		2.22	2.38	2.53	2.66	2.79	2.92	3.08	3.26	3.47	
	Q	40°C	2.04	2.63	3.25	3.95	4.76	5.73	6.9	8.3	9.98	
	P		2.03	2.17	2.3	2.41	2.53	2.66	2.82	3	3.23	
	Q	35°C	2.13	2.74	3.4	4.15	5.03	6.07	7.33	8.84	10.64	
	P		1.85	1.97	2.08	2.18	2.3	2.42	2.58	2.77	3.01	
	Q	30°C	2.21	2.84	3.54	4.33	5.27	6.39	7.73	9.35	11.27	
	P		1.69	1.79	1.88	1.97	2.08	2.21	2.37	2.57	2.83	
	Q	25°C	2.31	2.95	3.67	4.51	5.5	6.69	8.12	9.83	11.87	
	P		1.53	1.62	1.7	1.79	1.89	2.02	2.19	2.41	2.68	
	Q	20°C	2.44	3.09	3.84	4.71	5.75	7.01	8.52	10.32	12.46	
	P		1.4	1.48	1.55	1.63	1.74	1.88	2.05	2.28	2.58	
	Q	15°C	2.63	3.28	4.04	4.95	6.04	7.36	8.94	10.84		
	P		1.3	1.36	1.43	1.51	1.62	1.77	1.96	2.21		
	Q	10°C	2.88	3.54	4.31	5.25	6.38	7.75	9.41			
	P		1.23	1.29	1.35	1.43	1.55	1.71	1.91			

性能参数基于吸气温度20.0°C，过冷度0.0K。
Performance Based on Return Gas Temp. 20.0°C and Subcooling 0.0K.

型号Model	项目Item (KW)	Tc\Te	-40°C	-35°C	-30°C	-25°C	-20°C	-15°C	-10°C	-5°C	0°C	
WF15KE-TFD-GL1	Q	60°C						4.88	5.87	7.1	8.63	
	P						4.97	5.2	5.44	5.71		
	Q	55°C	2.03	2.69	3.33	4.02	4.81	5.74	6.88	8.27	9.98	
	P		3.42	3.71	3.96	4.19	4.39	4.6	4.81	5.05	5.32	
	Q	50°C	2.33	3.03	3.75	4.52	5.4	6.46	7.74	9.29	11.18	
	P		3.18	3.43	3.65	3.85	4.03	4.22	4.43	4.67	4.95	
	Q	45°C	2.54	3.29	4.06	4.91	5.89	7.06	8.48	10.19	12.24	
	P		2.94	3.15	3.34	3.52	3.68	3.86	4.07	4.31	4.59	
	Q	40°C	2.7	3.48	4.3	5.22	6.3	7.58	9.12	10.98	13.2	
	P		2.69	2.88	3.04	3.19	3.35	3.52	3.72	3.97	4.27	
	Q	35°C	2.82	3.63	4.5	5.49	6.65	8.03	9.7	11.69	14.08	
	P		2.45	2.61	2.75	2.89	3.04	3.21	3.41	3.67	3.98	
	Q	30°C	2.93	3.76	4.68	5.73	6.96	8.45	10.23	12.36	14.9	
	P		2.23	2.36	2.48	2.61	2.75	2.92	3.13	3.4	3.74	
	Q	25°C	3.06	3.91	4.86	5.96	7.28	8.85	10.74	13	15.69	
	P		2.03	2.14	2.25	2.36	2.5	2.68	2.9	3.18	3.54	
	Q	20°C	3.23	4.09	5.07	6.23	7.61	9.27	11.27	13.65	16.48	
	P		1.86	1.95	2.05	2.16	2.3	2.48	2.72	3.02	3.41	
	Q	15°C	3.47	4.34	5.35	6.54	7.99	9.73	11.82	14.33		
	P		1.72	1.8	1.89	2	2.14	2.34	2.59	2.92		
	Q	10°C	3.81	4.68	5.7	6.94	8.44	10.25	12.44			
	P		1.63	1.7	1.78	1.9	2.05	2.26	2.53			
	WF18KE-TFD-GL1	Q	60°C						5.71	6.87	8.31	10.1
		P						5.82	6.08	6.36	6.68	
Q		55°C	2.37	3.15	3.9	4.71	5.63	6.72	8.05	9.68	11.68	
P			4	4.35	4.64	4.9	5.14	5.38	5.63	5.91	6.23	
Q		50°C	2.73	3.55	4.38	5.29	6.33	7.56	9.06	10.88	13.08	
P			3.72	4.02	4.28	4.5	4.72	4.94	5.19	5.46	5.79	
Q		45°C	2.98	3.85	4.75	5.75	6.9	8.27	9.92	11.92	14.33	
P			3.44	3.69	3.91	4.11	4.31	4.52	4.76	5.04	5.38	
Q		40°C	3.16	4.07	5.04	6.12	7.37	8.87	10.68	12.85	15.45	
P			3.15	3.37	3.56	3.74	3.92	4.12	4.36	4.65	5	
Q		35°C	3.3	4.24	5.27	6.42	7.78	9.4	11.35	13.69	16.48	
P			2.87	3.05	3.22	3.38	3.55	3.75	3.99	4.29	4.66	
Q		30°C	3.43	4.4	5.47	6.7	8.15	9.89	11.97	14.47	17.44	
P			2.61	2.76	2.91	3.05	3.22	3.42	3.67	3.98	4.37	
Q		25°C	3.58	4.57	5.69	6.98	8.52	10.36	12.57	15.22	18.37	
P			2.37	2.5	2.63	2.77	2.93	3.13	3.39	3.73	4.15	
Q		20°C	3.78	4.79	5.94	7.29	8.9	10.85	13.19	15.98	19.29	
P			2.17	2.28	2.4	2.53	2.69	2.9	3.18	3.54	3.99	
Q		15°C	4.06	5.08	6.26	7.66	9.35	11.39	13.84	16.77		
P			2.02	2.11	2.21	2.34	2.51	2.74	3.03	3.42		
Q		10°C	4.46	5.47	6.67	8.12	9.87	12	14.56			
P			1.91	1.99	2.09	2.22	2.4	2.64	2.96			
WF25KE-TFD-GL1		Q	60°C						6.24	7.5	9.08	11.03
		P						6.35	6.64	6.95	7.3	
	Q	55°C	2.59	3.44	4.26	5.14	6.14	7.34	8.79	10.58	12.76	
	P		4.37	4.75	5.07	5.35	5.61	5.87	6.15	6.45	6.8	
	Q	50°C	2.98	3.88	4.79	5.77	6.91	8.26	9.89	11.88	14.29	
	P		4.07	4.39	4.67	4.92	5.16	5.4	5.66	5.97	6.32	
	Q	45°C	3.25	4.2	5.19	6.28	7.53	9.03	10.83	13.02	15.65	
	P		3.75	4.03	4.27	4.49	4.71	4.94	5.2	5.5	5.87	
	Q	40°C	3.45	4.45	5.5	6.68	8.05	9.69	11.66	14.03	16.87	
	P		3.44	3.68	3.88	4.08	4.28	4.5	4.76	5.07	5.46	

型号Model	项目Item (KW)	Tc\Te	-40°C	-35°C	-30°C	-25°C	-20°C	-15°C	-10°C	-5°C	0°C	
WF28KE-TFD-GL1	Q	60°C						7.33	8.82	10.68	12.97	
	P						7.47	7.81	8.17	8.58		
	Q	55°C	3.05	4.04	5.01	6.04	7.22	8.63	10.34	12.44	15	
	P		5.14	5.58	5.96	6.29	6.6	6.91	7.23	7.59	8	
	Q	50°C	3.5	4.56	5.63	6.79	8.12	9.71	11.63	13.97	16.8	
	P		4.78	5.16	5.49	5.78	6.06	6.35	6.66	7.02	7.43	
	Q	45°C	3.82	4.94	6.1	7.38	8.86	10.62	12.74	15.31	18.4	
	P		4.41	4.74	5.02	5.28	5.54	5.81	6.11	6.47	6.9	
	Q	40°C	4.05	5.23	6.47	7.85	9.47	11.39	13.71	16.5	19.84	
	P		4.04	4.32	4.57	4.8	5.03	5.29	5.6	5.97	6.42	
	Q	35°C	4.23	5.45	6.76	8.25	9.99	12.07	14.57	17.57	21.16	
	P		3.69	3.92	4.13	4.34	4.56	4.82	5.13	5.51	5.98	
	Q	30°C	4.4	5.65	7.03	8.6	10.47	12.7	15.37	18.58	22.39	
	P		3.35	3.55	3.73	3.92	4.13	4.39	4.71	5.11	5.62	
	Q	25°C	4.59	5.87	7.3	8.96	10.94	13.3	16.15	19.55	23.58	
	P		3.05	3.22	3.38	3.55	3.76	4.02	4.36	4.79	5.32	
	Q	20°C	4.85	6.15	7.62	9.36	11.43	13.93	16.93	20.52	24.77	
	P		2.79	2.93	3.08	3.24	3.45	3.73	4.08	4.54	5.12	
	Q	15°C	5.22	6.52	8.03	9.83	12	14.62	17.77	21.54		
	P		2.59	2.71	2.84	3.01	3.22	3.51	3.89	4.39		
	Q	10°C	5.72	7.03	8.57	10.43	12.68	15.41	18.7			
	P		2.45	2.56	2.68	2.85	3.08	3.39	3.8			
	WF34KE-TFD-GL1	Q	60°C						9.56	11.5	13.91	16.9
		P						9.74	10.18	10.65	11.18	
Q		55°C	3.97	5.26	6.53	7.88	9.41	11.24	13.47	16.21	19.55	
P			6.7	7.27	7.76	8.2	8.6	9	9.42	9.89	10.42	
Q		50°C	4.56	5.94	7.34	8.85	10.59	12.65	15.16	18.2	21.9	
P			6.23	6.73	7.15	7.54	7.9	8.27	8.68	9.14	9.69	
Q		45°C	4.98	6.44	7.95	9.62	11.54	13.84	16.6	19.95	23.98	
P			5.75	6.18	6.55	6.88	7.22	7.57	7.97	8.43	9	
Q		40°C	5.28	6.81	8.43	10.23	12.34	14.85	17.86	21.5	25.85	
P			5.27	5.63	5.95	6.25	6.56	6.9	7.3	7.78	8.36	
Q		35°C	5.52	7.1	8.81	10.75	13.02	15.73	18.99	22.9	27.57	
P			4.8	5.11	5.39	5.66	5.95	6.28	6.68	7.18	7.8	
Q		30°C	5.74	7.37	9.16	11.21	13.64	16.54	20.03	24.21	29.18	
P			4.37	4.63	4.87	5.11	5.39	5.72	6.14	6.66	7.32	
Q		25°C	5.99	7.65	9.51	11.68	14.25	17.34	21.04	25.47	30.73	
P			3.97	4.19	4.4	4.63	4.9	5.24	5.68	6.24	6.94	
Q		20°C	6.33	8.01	9.94	12.2	14.9	18.15	22.07	26.74	32.28	
P			3.64	3.82	4.01	4.23	4.5	4.86	5.32	5.92	6.67	
Q		15°C	6.8	8.5	10.47	12.81	15.64	19.05	23.16	28.07		
P			3.37	3.53	3.7	3.92	4.2	4.58	5.07	5.72		
Q		10°C	7.46	9.16	11.17	13.59	16.52	20.08	24.37			
P			3.2	3.33	3.49	3.71	4.01	4.42	4.96			
WF38KE-TFD-GL1		Q	60°C						11.02	13.26	16.04	19.48
		P						11.22	11.73	12.28	12.89	
	Q	55°C	4.58	6.07	7.53	9.08	10.85	12.96	15.53	18.68	22.54	
	P		7.72	8.38	8.95	9.45	9.92	10.38	10.86	11.4	12.01	
	Q	50°C	5.26	6.85	8.46	10.2	12.2	14.59	17.47	20.98	25.24	
	P		7.18	7.76	8.25	8.69	9.11	9.54	10.01	10.54	11.17	
	Q	45°C	5.74	7.43	9.17	11.09	13.31	15.95	19.14	23	27.64	
	P		6.63	7.12	7.55	7.94	8.32	8.73	9.18	9.72	10.37	
	Q	40°C	6.09	7.85	9.71	11.8	14.22	17.12	20.6	24.78	29.81	
	P		6.07	6.49	6.86	7.21	7.56	7.95	8.41	8.96	9.64	
	Q	35°C	6.36	8.19	10.16	12.39	15.01	18.14	21.89	26.4	31.78	
	P		5.54	5.89	6.21	6.52	6.85	7.24	7.7	8.28	8.99	
	Q	30°C	6.61	8.49	10.56	12.93	15.73	19.07	23.09	27.91	33.64	
	P		5.03	5.33	5.61	5.89	6.21	6.6	7.08	7.68	8.44	
	Q	25°C	6.9	8.82	10.97	13.46	16.43	19.99	24.26	29.36	35.43	
	P		4.58	4.83	5.07	5.34	5.65	6.05	6.55	7.19	8	
	Q	20°C	7.29	9.24	11.45	14.06	17.18	20.93	25.44	30.83	37.22	
	P		4.19	4.4	4.62	4.87	5.19	5.6	6.13	6.82	7.69	
	Q	15°C	7.84	9.8	12.07	14.77	18.03	21.97	26.7	32.36		
	P		3.89	4.07	4.27	4.51	4.84	5.28	5.85	6.59		
	Q	10°C	8.6	10.56	12.87	15.66	19.05	23.15	28.1			
	P		3.68	3.84	4.03	4.28	4.62	5.09	5.71			

性能参数基于吸气温度20.0°C，过冷度0.0K。
Performance Based on Return Gas Temp. 20.0°C and Subcooling 0.0K.

型号Model	项目Item (KW)	Tc\Te	-40°C	-35°C	-30°C	-25°C	-20°C	-15°C	-10°C	-5°C	0°C	
WF49KE-TFD-GL1	Q	60°C						14.37	17.3	20.92	25.42	
	P						14.64	15.3	16.02	16.82		
	Q	55°C	5.98	7.92	9.82	11.85	14.16	16.91	20.26	24.37	29.41	
	P		10.08	10.94	11.68	12.33	12.94	13.54	14.17	14.87	15.67	
	Q	50°C	6.86	8.94	11.03	13.31	15.92	19.03	22.79	27.37	32.93	
	P		9.37	10.12	10.76	11.34	11.88	12.44	13.05	13.75	14.57	
	Q	45°C	7.49	9.69	11.96	14.46	17.36	20.81	24.97	30	36.06	
	P		8.65	9.29	9.84	10.35	10.85	11.38	11.98	12.68	13.53	
	Q	40°C	7.95	10.25	12.67	15.39	18.56	22.33	26.87	32.33	38.88	
	P		7.92	8.47	8.95	9.4	9.87	10.38	10.97	11.69	12.58	
	Q	35°C	8.3	10.68	13.25	16.16	19.58	23.66	28.56	34.44	41.46	
	P		7.22	7.69	8.1	8.51	8.94	9.44	10.05	10.8	11.73	
	Q	30°C	8.63	11.08	13.77	16.86	20.51	24.88	30.13	36.41	43.88	
	P		6.57	6.96	7.32	7.69	8.1	8.61	9.23	10.02	11.01	
	Q	25°C	9	11.51	14.31	17.56	21.43	26.07	31.64	38.31	46.22	
	P		5.97	6.3	6.62	6.96	7.37	7.89	8.54	9.38	10.43	
	Q	20°C	9.51	12.05	14.94	18.34	22.41	27.3	33.19	40.21	48.55	
	P		5.47	5.75	6.03	6.36	6.77	7.3	8	8.9	10.03	
	Q	15°C	10.22	12.78	15.74	19.27	23.52	28.66	34.83	42.21		
	P		5.07	5.31	5.57	5.89	6.32	6.88	7.63	8.6		
	Q	10°C	11.22	13.78	16.79	20.43	24.85	30.2	36.66			
	P		4.81	5.01	5.25	5.58	6.03	6.64	7.45			
	WF60KE-TWD-GL1	Q	60°C						18.77	22.58	27.32	33.19
		P						19.12	19.98	20.91	21.96	
Q		55°C	7.8	10.34	12.82	15.47	18.48	22.08	26.46	31.83	38.4	
P			13.16	14.28	15.25	16.1	16.89	17.68	18.5	19.41	20.47	
Q		50°C	8.96	11.67	14.41	17.38	20.79	24.85	29.76	35.74	43	
P			12.24	13.21	14.05	14.8	15.52	16.25	17.04	17.95	19.03	
Q		45°C	9.78	12.65	15.62	18.89	22.67	27.17	32.6	39.17	47.09	
P			11.29	12.13	12.85	13.52	14.17	14.86	15.64	16.56	17.67	
Q		40°C	10.38	13.38	16.55	20.1	24.23	29.15	35.08	42.22	50.77	
P			10.35	11.06	11.69	12.28	12.88	13.55	14.33	15.27	16.42	
Q		35°C	10.84	13.95	17.3	21.11	25.57	30.89	37.29	44.97	54.14	
P			9.43	10.04	10.58	11.11	11.68	12.33	13.12	14.1	15.32	
Q		30°C	11.26	14.47	17.98	22.02	26.79	32.49	39.34	47.54	57.3	
P			8.57	9.08	9.55	10.04	10.58	11.24	12.05	13.08	14.37	
Q		25°C	11.76	15.03	18.68	22.93	27.98	34.04	41.32	50.02	60.35	
P			7.8	8.23	8.64	9.09	9.63	10.3	11.15	12.25	13.62	
Q		20°C	12.42	15.74	19.51	23.95	29.26	35.65	43.33	52.51	63.39	
P			7.14	7.5	7.87	8.3	8.84	9.54	10.45	11.62	13.1	
Q		15°C	13.35	16.69	20.56	25.16	30.71	37.42	45.48	55.11		
P			6.63	6.93	7.27	7.69	8.25	8.99	9.96	11.23		
Q		10°C	14.65	17.99	21.93	26.68	32.45	39.44	47.86			
P			6.28	6.54	6.86	7.29	7.88	8.68	9.73			
WF75KE-TWD-GL1		Q	60°C						23.1	27.79	33.63	40.85
		P						23.53	24.59	25.74	27.03	
	Q	55°C	9.61	12.72	15.78	19.04	22.75	27.17	32.56	39.17	47.26	
	P		16.19	17.58	18.76	19.82	20.79	21.76	22.77	23.89	25.19	
	Q	50°C	11.03	14.36	17.73	21.39	25.58	30.58	36.63	43.99	52.92	
	P		15.06	16.26	17.29	18.22	19.1	20	20.98			

型号Model	项目Item (KW)	Tc\Te	-40°C	-35°C	-30°C	-25°C	-20°C	-15°C	-10°C	-5°C	0°C	
WF06KE-PFJ-GL1	Q	60°C						2.08	2.5	3.03	3.68	
	P						2.37	2.47	2.59	2.72		
	Q	55°C	0.86	1.15	1.42	1.72	2.05	2.45	2.93	3.53	4.26	
	P		1.63	1.77	1.89	1.99	2.09	2.19	2.29	2.4	2.53	
	Q	50°C	0.99	1.29	1.6	1.93	2.3	2.75	3.3	3.96	4.77	
	P		1.52	1.64	1.74	1.83	1.92	2.01	2.11	2.22	2.36	
	Q	45°C	1.08	1.4	1.73	2.09	2.51	3.01	3.61	4.34	5.22	
	P		1.4	1.5	1.59	1.67	1.75	1.84	1.94	2.05	2.19	
	Q	40°C	1.15	1.48	1.83	2.23	2.69	3.23	3.89	4.68	5.63	
	P		1.28	1.37	1.45	1.52	1.59	1.68	1.77	1.89	2.03	
	Q	35°C	1.2	1.55	1.92	2.34	2.83	3.42	4.13	4.98	6	
	P		1.17	1.24	1.31	1.38	1.45	1.53	1.62	1.75	1.9	
	Q	30°C	1.25	1.6	1.99	2.44	2.97	3.6	4.36	5.27	6.35	
	P		1.06	1.12	1.18	1.24	1.31	1.39	1.49	1.62	1.78	
	Q	25°C	1.3	1.67	2.07	2.54	3.1	3.77	4.58	5.54	6.69	
	P		0.97	1.02	1.07	1.13	1.19	1.27	1.38	1.52	1.69	
	Q	20°C	1.38	1.74	2.16	2.65	3.24	3.95	4.8	5.82	7.03	
	P		0.88	0.93	0.97	1.03	1.09	1.18	1.29	1.44	1.62	
	Q	15°C	1.48	1.85	2.28	2.79	3.4	4.15	5.04	6.11		
	P		0.82	0.86	0.9	0.95	1.02	1.11	1.23	1.39		
	Q	10°C	1.63	2	2.43	2.96	3.6	4.37	5.31			
	P		0.78	0.81	0.85	0.9	0.98	1.07	1.2			
	WF09KE-PFJ-GL1	Q	60°C						2.83	3.41	4.12	5.01
		P						3.13	3.27	3.42	3.59	
Q		55°C	1.18	1.56	1.93	2.33	2.79	3.33	3.99	4.8	5.79	
P			2.15	2.33	2.49	2.63	2.76	2.89	3.02	3.17	3.35	
Q		50°C	1.35	1.76	2.17	2.62	3.13	3.75	4.49	5.39	6.48	
P			2	2.16	2.3	2.42	2.54	2.66	2.79	2.94	3.11	
Q		45°C	1.48	1.91	2.35	2.85	3.42	4.1	4.92	5.91	7.1	
P			1.85	1.98	2.1	2.21	2.32	2.43	2.56	2.71	2.89	
Q		40°C	1.57	2.02	2.5	3.03	3.65	4.39	5.29	6.36	7.66	
P			1.69	1.81	1.91	2.01	2.11	2.22	2.34	2.5	2.68	
Q		35°C	1.64	2.1	2.61	3.18	3.85	4.66	5.62	6.78	8.16	
P			1.54	1.64	1.73	1.82	1.91	2.02	2.15	2.31	2.5	
Q		30°C	1.7	2.18	2.71	3.32	4.04	4.9	5.93	7.17	8.64	
P			1.4	1.49	1.56	1.64	1.73	1.84	1.97	2.14	2.35	
Q		25°C	1.78	2.27	2.82	3.46	4.22	5.13	6.23	7.54	9.1	
P			1.28	1.35	1.41	1.49	1.57	1.68	1.82	2	2.23	
Q		20°C	1.88	2.38	2.94	3.61	4.41	5.37	6.53	7.92	9.56	
P			1.17	1.23	1.29	1.36	1.44	1.56	1.71	1.9	2.14	
Q		15°C	2.02	2.52	3.1	3.79	4.63	5.64	6.86	8.31		
P			1.08	1.13	1.19	1.26	1.35	1.47	1.63	1.84		
Q		10°C	2.21	2.72	3.31	4.02	4.89	5.94	7.22			
P			1.03	1.07	1.12	1.19	1.29	1.42	1.59			
WF13KE-PFJ-GL1		Q	60°C						3.58	4.3	5.2	6.32
		P						3.95	4.13	4.32	4.53	
	Q	55°C	1.49	1.97	2.44	2.95	3.52	4.2	5.04	6.06	7.31	
	P		2.72	2.95	3.15	3.32	3.49	3.65	3.82	4.01	4.23	
	Q	50°C	1.71	2.22	2.74	3.31	3.96	4.73	5.67	6.8	8.19	
	P		2.53	2.73	2.9	3.06	3.2	3.35	3.52	3.71	3.93	
	Q	45°C	1.86	2.41	2.97	3.6	4.32	5.17	6.21	7.46	8.97	
	P		2.33	2.5	2.65	2.79	2.93	3.07	3.23	3.42	3.65	
	Q	40°C	1.98	2.55	3.15	3.83	4.61	5.55	6.68	8.04	9.67	
	P		2.14	2.28	2.41	2.53	2.66	2.8	2.96	3.15	3.39	
	Q	35°C	2.07	2.66	3.3	4.02	4.87	5.88	7.1	8.56	10.31	
	P		1.95	2.07	2.18	2.29	2.41	2.55	2.71	2.91	3.16	
	Q	30°C	2.15	2.76	3.43	4.19	5.1	6.19	7.49	9.05	10.91	
	P		1.77	1.88	1.97	2.07	2.18	2.32	2.49	2.7	2.97	
	Q	25°C	2.25	2.87	3.56	4.37	5.33	6.48	7.87	9.53	11.5	
	P		1.61	1.7	1.78	1.88	1.99	2.13	2.3	2.53	2.81	
	Q	20°C	2.37	3	3.72	4.56	5.57	6.79	8.25	10	12.08	
	P		1.47	1.55	1.62	1.71	1.82	1.97	2.16	2.4	2.7	
	Q	15°C	2.55	3.18	3.92	4.79	5.85	7.13	8.66	10.5		
	P		1.37	1.43	1.5	1.59	1.7	1.86	2.06	2.32		
	Q	10°C	2.8	3.43	4.18	5.08	6.18	7.51	9.12			
	P		1.3	1.35	1.42	1.5	1.63	1.79	2.01			

性能参数基于吸气温度20.0°C，过冷度0.0K。
Performance Based on Return Gas Temp. 20.0°C and Subcooling 0.0K.

型号Model	项目Item (KW)	Tc\Te	-40°C	-35°C	-30°C	-25°C	-20°C	-15°C	-10°C	-5°C	0°C	
WF06KE-TFD-GL1	Q	60°C						2.08	2.51	3.03	3.68	
	P						2.23	2.33	2.44	2.56		
	Q	55°C	0.87	1.15	1.42	1.71	2.05	2.45	2.93	3.53	4.26	
	P		1.54	1.67	1.78	1.88	1.97	2.06	2.16	2.27	2.39	
	Q	50°C	0.99	1.29	1.6	1.93	2.3	2.75	3.3	3.96	4.77	
	P		1.43	1.54	1.64	1.73	1.81	1.9	1.99	2.09	2.22	
	Q	45°C	1.09	1.4	1.73	2.09	2.51	3.01	3.61	4.34	5.22	
	P		1.32	1.42	1.5	1.58	1.65	1.73	1.83	1.93	2.06	
	Q	40°C	1.15	1.48	1.83	2.23	2.69	3.23	3.89	4.68	5.63	
	P		1.21	1.29	1.36	1.43	1.5	1.58	1.67	1.78	1.92	
	Q	35°C	1.2	1.55	1.92	2.34	2.83	3.43	4.13	4.99	6	
	P		1.1	1.17	1.23	1.3	1.36	1.44	1.53	1.65	1.79	
	Q	30°C	1.25	1.61	1.99	2.44	2.97	3.6	4.36	5.27	6.35	
	P		1	1.06	1.11	1.17	1.23	1.31	1.41	1.53	1.68	
	Q	25°C	1.31	1.67	2.07	2.54	3.1	3.78	4.58	5.54	6.69	
	P		0.91	0.96	1.01	1.06	1.12	1.2	1.3	1.43	1.59	
	Q	20°C	1.38	1.75	2.17	2.66	3.25	3.95	4.81	5.82	7.03	
	P		0.83	0.88	0.92	0.97	1.03	1.11	1.22	1.36	1.53	
	Q	15°C	1.48	1.85	2.28	2.79	3.41	4.15	5.04	6.11		
	P		0.77	0.81	0.85	0.9	0.96	1.05	1.16	1.31		
	Q	10°C	1.63	2	2.43	2.96	3.6	4.37	5.31			
	P		0.73	0.76	0.8	0.85	0.92	1.01	1.14			
	WF09KE-TFD-GL1	Q	60°C						2.83	3.41	4.12	5.01
		P						3.03	3.17	3.32	3.49	
Q		55°C	1.18	1.56	1.93	2.33	2.79	3.33	3.99	4.8	5.79	
P			2.09	2.27	2.42	2.56	2.68	2.81	2.94	3.08	3.25	
Q		50°C	1.35	1.76	2.17	2.62	3.13	3.75	4.49	5.39	6.48	
P			1.94	2.1	2.23	2.35	2.46	2.58	2.71	2.85	3.02	
Q		45°C	1.48	1.91	2.35	2.85	3.42	4.1	4.92	5.91	7.1	
P			1.79	1.92	2.04	2.15	2.25	2.36	2.48	2.63	2.8	
Q		40°C	1.57	2.02	2.49	3.03	3.65	4.4	5.29	6.36	7.66	
P			1.64	1.76	1.86	1.95	2.04	2.15	2.27	2.42	2.61	
Q		35°C	1.64	2.1	2.61	3.18	3.86	4.66	5.62	6.78	8.16	
P			1.5	1.59	1.68	1.76	1.85	1.96	2.08	2.24	2.43	
Q		30°C	1.7	2.18	2.71	3.32	4.04	4.9	5.93	7.17	8.64	
P			1.36	1.44	1.52	1.59	1.68	1.78	1.91	2.08	2.28	
Q		25°C	1.78	2.27	2.82	3.46	4.22	5.14	6.23	7.54	9.1	
P			1.24	1.31	1.37	1.44	1.53	1.63	1.77	1.94	2.16	
Q		20°C	1.88	2.38	2.94	3.61	4.41	5.37	6.54	7.92	9.56	
P			1.13	1.19	1.25	1.32	1.4	1.51	1.66	1.84	2.08	
Q		15°C	2.02	2.52	3.1	3.79	4.63	5.64	6.86	8.31		
P			1.05	1.1	1.15	1.22	1.31	1.43	1.58	1.78		
Q		10°C	2.21	2.72	3.31	4.02	4.89	5.94	7.22			
P			1	1.04	1.09	1.16	1.25	1.38	1.54			
WF13KE-TFD-GL1		Q	60°C						3.58	4.31	5.21	6.32
		P						3.83	4.01	4.19	4.4	
	Q	55°C	1.49	1.97	2.44	2.95	3.52	4.2	5.04	6.06	7.31	
	P		2.64	2.86	3.06	3.23	3.39	3.54	3.71	3.89	4.1	
	Q	50°C	1.71	2.22	2.74	3.31	3.96	4.73	5.67	6.81	8.19	
	P		2.45	2.65	2.82	2.97	3.11	3.26	3.42	3.6	3.81	
	Q	45°C	1.86	2.41	2.97	3.59	4.31	5.17	6.21	7.46	8.96	
	P		2.26	2.43	2.58	2.71	2.84	2.98	3.14	3.32	3.54	
	Q	40°C	1.98	2.55	3.15	3.83	4.61	5.55	6.68	8.04	9.67	
	P		2.07	2.22	2.34	2.46	2.58	2.72	2.87	3.06	3.29	
	Q	35°C	2.07	2.66	3.3	4.02						

型号Model	项目Item (KW)	Tc\Te	-40°C	-35°C	-30°C	-25°C	-20°C	-15°C	-10°C	-5°C	0°C	
WF15KE-TFD-GL1	Q	60°C						4.73	5.69	6.89	8.36	
	P						5.07	5.3	5.54	5.82		
	Q	55°C	1.97	2.6	3.23	3.89	4.65	5.56	6.66	8.02	9.67	
	P		3.49	3.79	4.04	4.27	4.48	4.69	4.9	5.15	5.42	
	Q	50°C	2.26	2.94	3.63	4.37	5.23	6.26	7.49	9	10.82	
	P		3.24	3.5	3.72	3.92	4.11	4.31	4.52	4.76	5.04	
	Q	45°C	2.47	3.18	3.93	4.75	5.71	6.84	8.21	9.86	11.85	
	P		2.99	3.21	3.41	3.58	3.76	3.94	4.15	4.39	4.68	
	Q	40°C	2.62	3.37	4.17	5.06	6.1	7.34	8.83	10.63	12.78	
	P		2.74	2.93	3.1	3.25	3.41	3.59	3.8	4.05	4.35	
	Q	35°C	2.73	3.51	4.36	5.32	6.44	7.78	9.39	11.32	13.63	
	P		2.5	2.66	2.8	2.94	3.09	3.27	3.48	3.74	4.06	
	Q	30°C	2.84	3.65	4.53	5.55	6.75	8.18	9.91	11.97	14.43	
	P		2.27	2.41	2.53	2.66	2.8	2.98	3.19	3.47	3.81	
	Q	25°C	2.97	3.79	4.71	5.78	7.05	8.58	10.41	12.6	15.2	
	P		2.07	2.18	2.29	2.41	2.55	2.73	2.96	3.25	3.61	
	Q	20°C	3.14	3.97	4.92	6.04	7.37	8.98	10.92	13.23	15.97	
	P		1.89	1.99	2.09	2.2	2.34	2.53	2.77	3.08	3.47	
	Q	15°C	3.37	4.21	5.18	6.34	7.74	9.43	11.46	13.88		
	P		1.76	1.84	1.93	2.04	2.19	2.38	2.64	2.98		
	Q	10°C	3.7	4.53	5.53	6.72	8.17	9.94	12.06			
	P		1.66	1.73	1.82	1.93	2.09	2.3	2.58			
	WF18KE-TFD-GL1	Q	60°C						5.54	6.66	8.06	9.79
		P						5.93	6.2	6.49	6.81	
Q		55°C	2.3	3.05	3.78	4.56	5.45	6.51	7.8	9.38	11.32	
P			4.08	4.43	4.73	4.99	5.24	5.48	5.74	6.02	6.35	
Q		50°C	2.64	3.44	4.24	5.12	6.12	7.32	8.77	10.53	12.67	
P			3.8	4.1	4.36	4.59	4.81	5.04	5.29	5.57	5.9	
Q		45°C	2.89	3.73	4.6	5.56	6.68	8.01	9.61	11.54	13.87	
P			3.5	3.76	3.99	4.19	4.4	4.61	4.85	5.14	5.48	
Q		40°C	3.06	3.94	4.88	5.92	7.14	8.59	10.34	12.44	14.96	
P			3.21	3.43	3.63	3.81	4	4.2	4.44	4.74	5.09	
Q		35°C	3.2	4.11	5.1	6.22	7.54	9.11	10.99	13.25	15.95	
P			2.93	3.11	3.28	3.45	3.62	3.82	4.07	4.37	4.75	
Q		30°C	3.33	4.27	5.3	6.49	7.9	9.58	11.6	14.01	16.89	
P			2.66	2.82	2.96	3.11	3.28	3.49	3.74	4.06	4.46	
Q		25°C	3.48	4.44	5.51	6.76	8.25	10.04	12.18	14.75	17.79	
P			2.42	2.55	2.68	2.82	2.99	3.19	3.46	3.8	4.23	
Q		20°C	3.67	4.65	5.76	7.06	8.63	10.51	12.78	15.48	18.69	
P			2.22	2.33	2.44	2.57	2.74	2.96	3.24	3.6	4.06	
Q		15°C	3.95	4.93	6.07	7.42	9.06	11.03	13.41	16.25		
P			2.06	2.15	2.25	2.39	2.56	2.79	3.09	3.48		
Q		10°C	4.33	5.31	6.47	7.87	9.57	11.63	14.11			
P			1.95	2.03	2.13	2.26	2.44	2.69	3.02			
WF25KE-TFD-GL1		Q	60°C						6.05	7.28	8.8	10.69
		P						6.48	6.77	7.08	7.44	
	Q	55°C	2.52	3.33	4.13	4.98	5.95	7.11	8.52	10.24	12.36	
	P		4.46	4.84	5.16	5.45	5.72	5.99	6.27	6.58	6.93	
	Q	50°C	2.89	3.75	4.63	5.59	6.69	7.99	9.58	11.5	13.84	
	P		4.15	4.48	4.76	5.01	5.26	5.5	5.77	6.08	6.45	
	Q	45°C	3.15	4.07	5.02	6.08	7.29	8.74	10.49	12.61	15.15	
	P		3.82	4.11	4.35	4.58	4.8	5.04	5.3	5.61	5.99	
	Q	40°C	3.34	4.31	5.32	6.47	7.8	9.38	11.29	13.59	16.34	
	P		3.5	3.75	3.96	4.16	4.36	4.59	4.85	5.17	5.56	
	Q	35°C	3.49	4.49	5.57	6.79	8.23	9.94	12	14.47	17.42	
	P		3.19	3.4	3.58	3.76	3.96	4.18	4.44	4.78	5.19	
	Q	30°C	3.63	4.66	5.79	7.09	8.62	10.46	12.66	15.3	18.44	
	P		2.9	3.08	3.24	3.4	3.58	3.81	4.08	4.43	4.87	
	Q	25°C	3.8	4.85	6.02	7.39	9.01	10.96	13.3	16.1	19.43	
	P		2.64	2.79	2.93	3.08	3.26	3.49	3.78	4.15	4.62	
	Q	20°C	4.01	5.07	6.29	7.72	9.42	11.48	13.95	16.91	20.41	
	P		2.42	2.54	2.67	2.81	2.99	3.23	3.54	3.94	4.44	
	Q	15°C	4.31	5.38	6.62	8.11	9.89	12.05	14.65	17.74		
	P		2.24	2.35	2.46	2.61	2.79	3.04	3.38	3.8		
	Q	10°C	4.72	5.8	7.06	8.59	10.45	12.7	15.41			
	P		2.13	2.22	2.32	2.47	2.67	2.94	3.3			

性能参数基于吸气温度20.0°C, 过冷度0.0K。
Performance Based on ReTURN Gas Temp. 20.0°C and Subcooling 0.0K.

型号Model	项目Item (KW)	Tc\Te	-40°C	-35°C	-30°C	-25°C	-20°C	-15°C	-10°C	-5°C	0°C	
WF28KE-TFD-GL1	Q	60°C						7.11	8.56	10.35	12.57	
	P						7.62	7.96	8.33	8.75		
	Q	55°C	2.96	3.91	4.85	5.85	7	8.36	10.01	12.05	14.53	
	P		5.24	5.69	6.07	6.41	6.73	7.04	7.37	7.73	8.15	
	Q	50°C	3.39	4.42	5.45	6.57	7.86	9.4	11.26	13.53	16.27	
	P		4.87	5.26	5.6	5.9	6.18	6.47	6.79	7.15	7.58	
	Q	45°C	3.71	4.79	5.91	7.14	8.58	10.28	12.34	14.82	17.82	
	P		4.5	4.83	5.12	5.39	5.65	5.92	6.23	6.6	7.04	
	Q	40°C	3.93	5.06	6.26	7.6	9.17	11.03	13.28	15.98	19.21	
	P		4.12	4.41	4.66	4.89	5.13	5.4	5.71	6.08	6.54	
	Q	35°C	4.11	5.28	6.55	7.99	9.68	11.69	14.12	17.02	20.49	
	P		3.76	4	4.21	4.43	4.65	4.91	5.23	5.62	6.1	
	Q	30°C	4.27	5.48	6.81	8.34	10.14	12.3	14.89	18	21.69	
	P		3.42	3.62	3.81	4	4.22	4.48	4.8	5.21	5.73	
	Q	25°C	4.46	5.7	7.08	8.69	10.6	12.89	15.64	18.94	22.84	
	P		3.11	3.28	3.44	3.62	3.83	4.1	4.44	4.88	5.43	
	Q	20°C	4.72	5.97	7.39	9.07	11.08	13.5	16.41	19.88	24	
	P		2.85	2.99	3.14	3.31	3.52	3.8	4.16	4.63	5.22	
	Q	15°C	5.07	6.33	7.79	9.53	11.63	14.17	17.22	20.87		
	P		2.64	2.76	2.9	3.06	3.29	3.58	3.97	4.47		
	Q	10°C	5.55	6.82	8.31	10.1	12.29	14.93	18.12			
	P		2.5	2.6	2.73	2.9	3.14	3.46	3.88			
	WF34KE-TFD-GL1	Q	60°C						9.27	11.15	13.49	16.38
		P						9.92	10.37	10.86	11.4	
Q		55°C	3.85	5.1	6.32	7.63	9.12	10.89	13.05	15.7	18.94	
P			6.83	7.41	7.91	8.36	8.77	9.18	9.6	10.08	10.62	
Q		50°C	4.42	5.75	7.1	8.57	10.25	12.25	14.68	17.63	21.2	
P			6.35	6.86	7.29	7.68	8.06	8.44	8.85	9.32	9.88	
Q		45°C	4.83	6.24	7.7	9.31	11.18	13.4	16.08	19.32	23.22	
P			5.86	6.3	6.67	7.02	7.36	7.72	8.12	8.6	9.17	
Q		40°C	5.12	6.6	8.16	9.91	11.95	14.38	17.3	20.82	25.03	
P			5.37	5.74	6.07	6.37	6.69	7.03	7.44	7.93	8.53	
Q		35°C	5.35	6.88	8.54	10.41	12.61	15.24	18.39	22.18	26.7	
P			4.9	5.21	5.49	5.77	6.06	6.4	6.81	7.32	7.95	
Q		30°C	5.57	7.14	8.88	10.87	13.22	16.03	19.41	23.45	28.26	
P			4.45	4.72	4.96	5.21	5.49	5.83	6.26	6.79	7.46	
Q		25°C	5.82	7.42	9.23	11.32	13.81	16.8	20.39	24.68	29.77	
P			4.05	4.27	4.49	4.72	5	5.35	5.79	6.36	7.07	
Q		20°C	6.15	7.78	9.63	11.82	14.44	17.59	21.38	25.91	31.27	
P			3.71	3.89	4.09	4.31	4.59	4.95	5.42	6.03	6.8	
Q		15°C	6.6	8.25	10.15	12.42	15.16	18.47	22.44	27.19		
P			3.44	3.6	3.77	3.99	4.28	4.67	5.17	5.83		
Q		10°C	7.24	8.88	10.82	13.17	16.01	19.46	23.61			
P			3.26	3.39	3.56	3.78	4.09	4.5	5.0			

型号Model	项目Item (KW)	Tc\Te	-40°C	-35°C	-30°C	-25°C	-20°C	-15°C	-10°C	-5°C	0°C
WF49KE-TFD-GL1	Q	60°C						13.94	16.77	20.28	24.63
	P						14.93	15.6	16.33	17.14	
	Q	55°C	5.8	7.67	9.51	11.47	13.71	16.38	19.63	23.61	28.48
	P		10.27	11.15	11.9	12.57	13.19	13.8	14.44	15.16	15.98
	Q	50°C	6.65	8.65	10.68	12.88	15.41	18.43	22.07	26.51	31.89
	P		9.55	10.31	10.97	11.56	12.12	12.69	13.31	14.02	14.85
	Q	45°C	7.26	9.38	11.58	14	16.81	20.15	24.18	29.05	34.92
	P		8.81	9.47	10.04	10.55	11.06	11.6	12.21	12.93	13.8
	Q	40°C	7.7	9.92	12.27	14.9	17.97	21.62	26.02	31.31	37.65
	P		8.08	8.64	9.13	9.59	10.06	10.58	11.19	11.92	12.82
	Q	35°C	8.05	10.35	12.84	15.66	18.97	22.92	27.66	33.36	40.15
	P		7.36	7.84	8.26	8.67	9.12	9.63	10.24	11.01	11.96
	Q	30°C	8.38	10.74	13.35	16.34	19.88	24.11	29.19	35.27	42.5
	P		6.69	7.09	7.46	7.84	8.26	8.77	9.41	10.21	11.22
	Q	25°C	8.75	11.17	13.87	17.02	20.77	25.26	30.66	37.11	44.77
	P		6.09	6.42	6.75	7.1	7.52	8.04	8.71	9.56	10.64
	Q	20°C	9.24	11.69	14.49	17.78	21.72	26.46	32.16	38.96	47.03
	P		5.58	5.86	6.14	6.48	6.9	7.45	8.16	9.07	10.23
	Q	15°C	9.93	12.4	15.27	18.68	22.8	27.77	33.75	40.89	
	P		5.17	5.41	5.67	6	6.44	7.02	7.78	8.76	
	Q	10°C	10.89	13.36	16.28	19.8	24.08	29.26	35.51		
	P		4.9	5.11	5.36	5.69	6.15	6.77	7.6		
	Q	60°C						18.2	21.9	26.49	32.17
	P							19.49	20.37	21.32	22.39
Q	55°C	7.57	10.01	12.42	14.98	17.9	21.39	25.63	30.83	37.19	
P		13.41	14.56	15.54	16.41	17.22	18.02	18.86	19.79	20.86	
Q	50°C	8.68	11.3	13.95	16.82	20.12	24.06	28.82	34.61	41.63	
P		12.47	13.47	14.32	15.09	15.82	16.56	17.38	18.3	19.4	
Q	45°C	9.48	12.25	15.12	18.28	21.95	26.31	31.57	37.93	45.59	
P		11.51	12.36	13.1	13.78	14.45	15.15	15.95	16.88	18.01	
Q	40°C	10.06	12.96	16.02	19.46	23.46	28.23	33.97	40.88	49.16	
P		10.55	11.28	11.92	12.52	13.13	13.81	14.61	15.57	16.74	
Q	35°C	10.51	13.52	16.76	20.45	24.77	29.92	36.12	43.56	52.43	
P		9.61	10.23	10.78	11.32	11.9	12.57	13.38	14.37	15.61	
Q	30°C	10.94	14.03	17.43	21.34	25.95	31.48	38.11	46.05	55.5	
P		8.74	9.26	9.74	10.23	10.79	11.46	12.29	13.34	14.65	
Q	25°C	11.42	14.58	18.12	22.23	27.12	32.99	40.04	48.46	58.46	
P		7.95	8.39	8.81	9.27	9.81	10.5	11.37	12.48	13.89	
Q	20°C	12.07	15.27	18.92	23.22	28.36	34.55	41.99	50.88	61.41	
P		7.28	7.65	8.02	8.46	9.01	9.72	10.65	11.84	13.35	
Q	15°C	12.97	16.19	19.93	24.39	29.77	36.26	44.07	53.4		
P		6.75	7.06	7.41	7.84	8.41	9.16	10.16	11.44		
Q	10°C	14.21	17.44	21.25	25.85	31.44	38.21	46.37			
P		6.4	6.67	6.99	7.43	8.03	8.84	9.92			
Q	60°C						22.4	26.95	32.6	39.59	
P							23.99	25.07	26.24	27.55	
Q	55°C	9.32	12.32	15.28	18.44	22.04	26.32	31.54	37.94	45.77	
P		16.51	17.92	19.13	20.2	21.2	22.18	23.21	24.36	25.68	
Q	50°C	10.69	13.91	17.16	20.7	24.77	29.61	35.47	42.6	51.24	
P		15.35	16.58	17.63	18.57	19.47	20.39	21.38	22.53	23.87	
Q	45°C	11.67	15.08	18.6	22.5	27.01	32.38	38.86	46.69	56.11	
P		14.17	15.22	16.13	16.96	17.78	18.65	19.63	20.78	22.17	
Q	40°C	12.38	15.95	19.72	23.95	28.88	34.75	41.81	50.32	60.5	
P		12.98	13.88	14.67	15.41	16.16	17	17.98	19.16	20.61	
Q	35°C	12.94	16.64	20.63	25.16	30.48	36.83	44.46	53.61	64.53	
P		11.83	12.59	13.27	13.94	14.65	15.47	16.46	17.69	19.22	
Q	30°C	13.46	17.27	21.45	26.26	31.94	38.74	46.9	56.68	68.31	
P		10.76	11.4	11.99	12.59	13.28	14.1	15.12	16.41	18.03	
Q	25°C	14.06	17.95	22.3	27.36	33.38	40.6	49.27	59.64	71.95	
P		9.79	10.32	10.84	11.41	12.08	12.92	13.99	15.37	17.09	
Q	20°C	14.85	18.79	23.29	28.57	34.91	42.53	51.68	62.62	75.58	
P		8.96	9.41	9.88	10.41	11.09	11.97	13.11	14.58	16.43	
Q	15°C	15.96	19.93	24.53	30.02	36.64	44.63	54.24	65.72		
P		8.31	8.69	9.12	9.65	10.35	11.28	12.5	14.08		
Q	10°C	17.49	21.46	26.16	31.82	38.69	47.03	57.07			
P		7.88	8.2	8.61	9.15	9.88	10.88	12.21			

性能参数基于吸气温度20.0°C，过冷度0.0K。
Performance Based on Return Gas Temp. 20.0°C and Subcooling 0.0K.

型号Model	项目Item (KW)	Tc\Te	-40°C	-35°C	-30°C	-25°C	-20°C	-15°C	-10°C	-5°C	0°C	
WF06KE-PFJ-GL1	Q	60°C							2.11	2.53	3.06	3.72
	P							2.34	2.45	2.56	2.69	
	Q	55°C	0.87	1.16	1.44	1.74	2.08	2.48	2.97	3.57	4.3	
	P		1.61	1.75	1.87	1.97	2.07	2.17	2.27	2.38	2.51	
	Q	50°C	1	1.31	1.62	1.95	2.33	2.79	3.34	4.01	4.82	
	P		1.5	1.62	1.72	1.81	1.9	1.99	2.09	2.2	2.33	
	Q	45°C	1.1	1.42	1.75	2.12	2.54	3.05	3.66	4.39	5.28	
	P		1.38	1.49	1.58	1.66	1.74	1.82	1.92	2.03	2.17	
	Q	40°C	1.16	1.5	1.86	2.25	2.72	3.27	3.93	4.73	5.69	
	P		1.27	1.36	1.43	1.51	1.58	1.66	1.76	1.87	2.01	
	Q	35°C	1.21	1.56	1.94	2.37	2.87	3.46	4.18	5.04	6.07	
	P		1.16	1.23	1.3	1.36	1.43	1.51	1.61	1.73	1.88	
	Q	30°C	1.26	1.62	2.01	2.47	3	3.64	4.41	5.33	6.42	
	P		1.05	1.11	1.17	1.23	1.3	1.38	1.48	1.6	1.76	
	Q	25°C	1.32	1.68	2.09	2.57	3.13	3.81	4.63	5.6	6.76	
	P		0.96	1.01	1.06	1.11	1.18	1.26	1.37	1.5	1.67	
	Q	20°C	1.39	1.76	2.18	2.68	3.28	3.99	4.85	5.88	7.1	
	P		0.88	0.92	0.97	1.02	1.08	1.17	1.28	1.42	1.61	
	Q	15°C	1.5	1.87	2.3	2.82	3.44	4.19	5.1	6.18		
	P		0.81	0.85	0.89	0.94	1.01	1.1	1.22	1.38		
	Q	10°C	1.64	2.02	2.49	2.99	3.64	4.42	5.37			
	P		0.77	0.8	0.84	0.89	0.97	1.06	1.19			
	Q	60°C						2.87	3.45	4.17	5.06	
	P							3.1	3.24	3.39	3.56	
Q	55°C	1.18	1.58	1.96	2.37	2.83	3.37	4.04	4.85	5.85		
P		2.13	2.31	2.47	2.61	2.74	2.86	3	3.14	3.31		
Q	50°C	1.36	1.78	2.2	2.66	3.18	3.79	4.54	5.45	6.55		
P		1.98	2.14	2.27	2.4	2.51	2.63	2.76	2.91	3.08		
Q	45°C	1.49	1.93	2.39	2.89	3.46	4.15	4.97	5.97	7.18		
P		1.83	1.96	2.08	2.19	2.29	2.41	2.53	2.68	2.86		
Q	40°C	1.58	2.04	2.53	3.07	3.7	4.45	5.35	6.43	7.74		
P		1.68	1.79	1.89	1.99	2.09	2.19	2.32	2.47	2.66		
Q	35°C	1.65	2.13	2.64	3.22	3.9	4.71	5.68	6.85	8.25		
P		1.53	1.63	1.71	1.8	1.89	2	2.12	2.28	2.48		
Q	30°C	1.72	2.21	2.74	3.36	4.08	4.95	5.99	7.24	8.73		
P		1.39	1.47	1.55	1.63	1.71	1.82	1.95	2.12	2.33		
Q	25°C	1.79	2.29	2.85	3.49	4.26	5.18	6.29	7.62	9.2		
P		1.26	1.33	1.4	1.47	1.56	1.67	1.81	1.98	2.21		
Q	20°C	1.89	2.4	2.97	3.65	4.46	5.43	6.6	8	9.66		
P		1.16	1.21	1.27	1.34	1.43	1.54	1.69	1.88	2.12		
Q	15°C	2.03	2.54	3.13	3.83	4.68	5.7	6.93	8.4			
P		1.07	1.12	1.18	1.25	1.34	1.46	1.61	1.82			
Q	10°C	2.24	2.74	3.34	4.07	4.95	6.01	7.3				
P		1.02	1.06	1.11	1.18	1.28	1.4	1.58				
Q	60°C						3.63	4.36	5.26	6.38		
P							3.91	4.09	4.28	4.49		
Q	55°C	1.48	1.99	2.48	3	3.59	4.28	5.12	6.14	7.39		
P		2.69	2.92	3.12	3.29	3.45	3.61	3.78	3.97	4.19		
Q	50°C	1.72	2.26	2.8	3.38	4.04	4.82	5.76	6.9	8.28		
P		2.5	2.7	2.87	3.03	3.17	3.32	3.48	3.67	3.89		
Q	45°C	1.89	2.45	3.03	3.67	4.4	5.26</					

型号Model	项目Item (KW)	Tc\Te	-40°C	-35°C	-30°C	-25°C	-20°C	-15°C	-10°C	-5°C	0°C	
WF06KE-TFD-GL1	Q	60°C						2.11	2.54	3.07	3.72	
	P						2.21	2.31	2.42	2.54		
	Q	55°C	0.87	1.16	1.44	1.74	2.08	2.48	2.97	3.57	4.31	
	P		1.52	1.65	1.76	1.86	1.95	2.04	2.14	2.24	2.36	
	Q	50°C	1	1.31	1.62	1.96	2.34	2.79	3.34	4.01	4.82	
	P		1.41	1.53	1.62	1.71	1.79	1.88	1.97	2.07	2.2	
	Q	45°C	1.1	1.42	1.76	2.12	2.55	3.05	3.66	4.39	5.28	
	P		1.3	1.4	1.49	1.56	1.64	1.72	1.81	1.91	2.04	
	Q	40°C	1.16	1.5	1.86	2.26	2.72	3.27	3.93	4.73	5.69	
	P		1.2	1.28	1.35	1.42	1.49	1.57	1.66	1.76	1.9	
	Q	35°C	1.22	1.57	1.94	2.37	2.87	3.46	4.18	5.04	6.07	
	P		1.09	1.16	1.22	1.28	1.35	1.43	1.52	1.63	1.77	
	Q	30°C	1.26	1.62	2.02	2.47	3	3.64	4.41	5.33	6.42	
	P		0.99	1.05	1.1	1.16	1.22	1.3	1.39	1.51	1.66	
	Q	25°C	1.32	1.68	2.09	2.57	3.13	3.81	4.63	5.6	6.76	
	P		0.9	0.95	1	1.05	1.11	1.19	1.29	1.42	1.57	
	Q	20°C	1.39	1.76	2.18	2.68	3.28	3.99	4.85	5.88	7.1	
	P		0.83	0.87	0.91	0.96	1.02	1.1	1.21	1.34	1.51	
	Q	15°C	1.5	1.87	2.3	2.82	3.44	4.19	5.1	6.18		
	P		0.77	0.8	0.84	0.89	0.95	1.04	1.15	1.3		
	Q	10°C	1.64	2.02	2.46	2.99	3.64	4.42	5.37			
	P		0.72	0.75	0.79	0.84	0.91	1	1.12			
	WF09KE-TFD-GL1	Q	60°C						2.87	3.45	4.17	5.06
		P						3.01	3.14	3.29	3.45	
Q		55°C	1.18	1.58	1.96	2.37	2.83	3.38	4.04	4.86	5.86	
P			2.07	2.24	2.4	2.53	2.66	2.78	2.91	3.05	3.22	
Q		50°C	1.36	1.78	2.2	2.66	3.18	3.8	4.55	5.46	6.56	
P			1.92	2.08	2.21	2.33	2.44	2.55	2.68	2.82	2.99	
Q		45°C	1.49	1.93	2.39	2.89	3.47	4.15	4.98	5.98	7.18	
P			1.77	1.91	2.02	2.13	2.23	2.34	2.46	2.6	2.78	
Q		40°C	1.58	2.04	2.53	3.07	3.7	4.45	5.35	6.44	7.74	
P			1.63	1.74	1.84	1.93	2.03	2.13	2.25	2.4	2.58	
Q		35°C	1.65	2.13	2.64	3.22	3.9	4.71	5.69	6.85	8.25	
P			1.48	1.58	1.66	1.75	1.84	1.94	2.06	2.22	2.41	
Q		30°C	1.72	2.21	2.74	3.36	4.08	4.95	5.99	7.24	8.73	
P			1.35	1.43	1.5	1.58	1.66	1.77	1.9	2.06	2.26	
Q		25°C	1.79	2.29	2.85	3.49	4.26	5.19	6.29	7.62	9.2	
P			1.23	1.29	1.36	1.43	1.51	1.62	1.75	1.93	2.14	
Q		20°C	1.89	2.4	2.97	3.65	4.46	5.43	6.6	8	9.66	
P			1.12	1.18	1.24	1.3	1.39	1.5	1.64	1.83	2.06	
Q		15°C	2.04	2.54	3.13	3.83	4.68	5.7	6.93	8.4		
P			1.04	1.09	1.14	1.21	1.3	1.41	1.57	1.76		
Q		10°C	2.24	2.74	3.34	4.07	4.95	6.01	7.3			
P			0.99	1.03	1.08	1.14	1.24	1.36	1.53			
WF13KE-TFD-GL1		Q	60°C						3.62	4.36	5.27	6.39
		P						3.8	3.97	4.15	4.36	
	Q	55°C	1.49	1.99	2.47	2.99	3.57	4.26	5.11	6.14	7.4	
	P		2.61	2.84	3.03	3.2	3.35	3.51	3.67	3.85	4.06	
	Q	50°C	1.72	2.25	2.78	3.36	4.02	4.8	5.74	6.89	8.28	
	P		2.43	2.62	2.79	2.94	3.08	3.23	3.38	3.56	3.78	
	Q	45°C	1.88	2.44	3.02	3.65	4.38	5.24	6.29	7.55	9.07	
	P		2.24	2.41	2.55	2.68	2.81	2.95	3.11	3.29	3.51	
	Q	40°C	2	2.58	3.19	3.88	4.67	5.62	6.76	8.13	9.77	
	P		2.05	2.2	2.32	2.44	2.56	2.69	2.84	3.03	3.26	
	Q	35°C	2.09	2.69	3.34	4.07	4.93	5.95	7.18	8.66	10.42	
	P		1.87	1.99	2.1	2.21	2.32	2.45	2.61	2.8	3.04	
	Q	30°C	2.17	2.79	3.46	4.24	5.16	6.25	7.57	9.15	11.03	
	P		1.7	1.8	1.9	1.99	2.1	2.23	2.39	2.6	2.85	
	Q	25°C	2.26	2.89	3.6	4.41	5.38	6.55	7.95	9.62	11.61	
	P		1.55	1.63	1.72	1.8	1.91	2.04	2.21	2.43	2.71	
	Q	20°C	2.39	3.03	3.75	4.61	5.63	6.86	8.34	10.1	12.2	
	P		1.42	1.49	1.56	1.65	1.75	1.89	2.07	2.31	2.6	
	Q	15°C	2.57	3.21	3.96	4.84	5.91	7.2	8.75	10.61		
	P		1.32	1.37	1.44	1.53	1.64	1.78	1.98	2.23		
	Q	10°C	2.82	3.47	4.22	5.14	6.25	7.59	9.22			
	P		1.25	1.3	1.36	1.44	1.56	1.72	1.93			

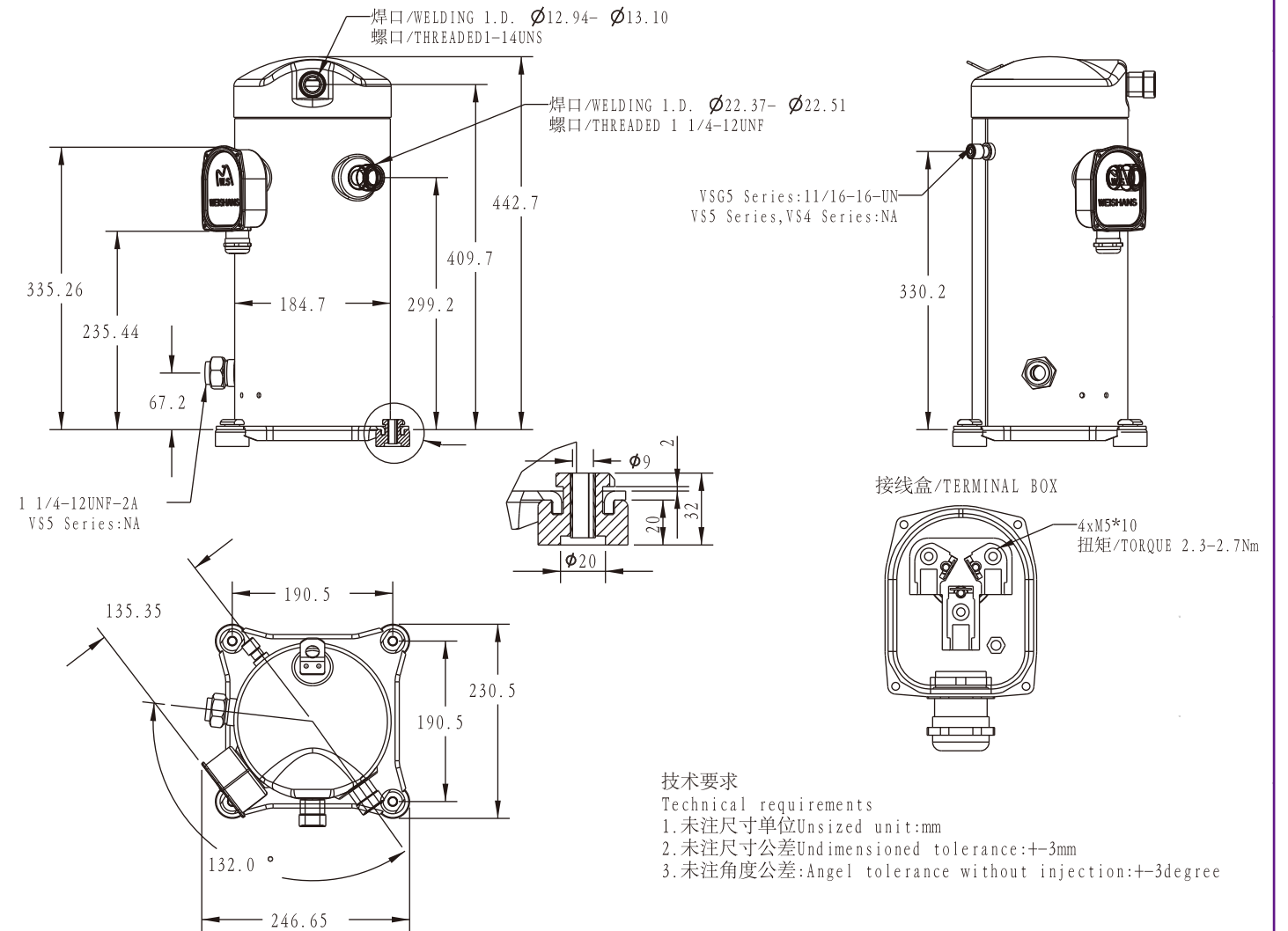
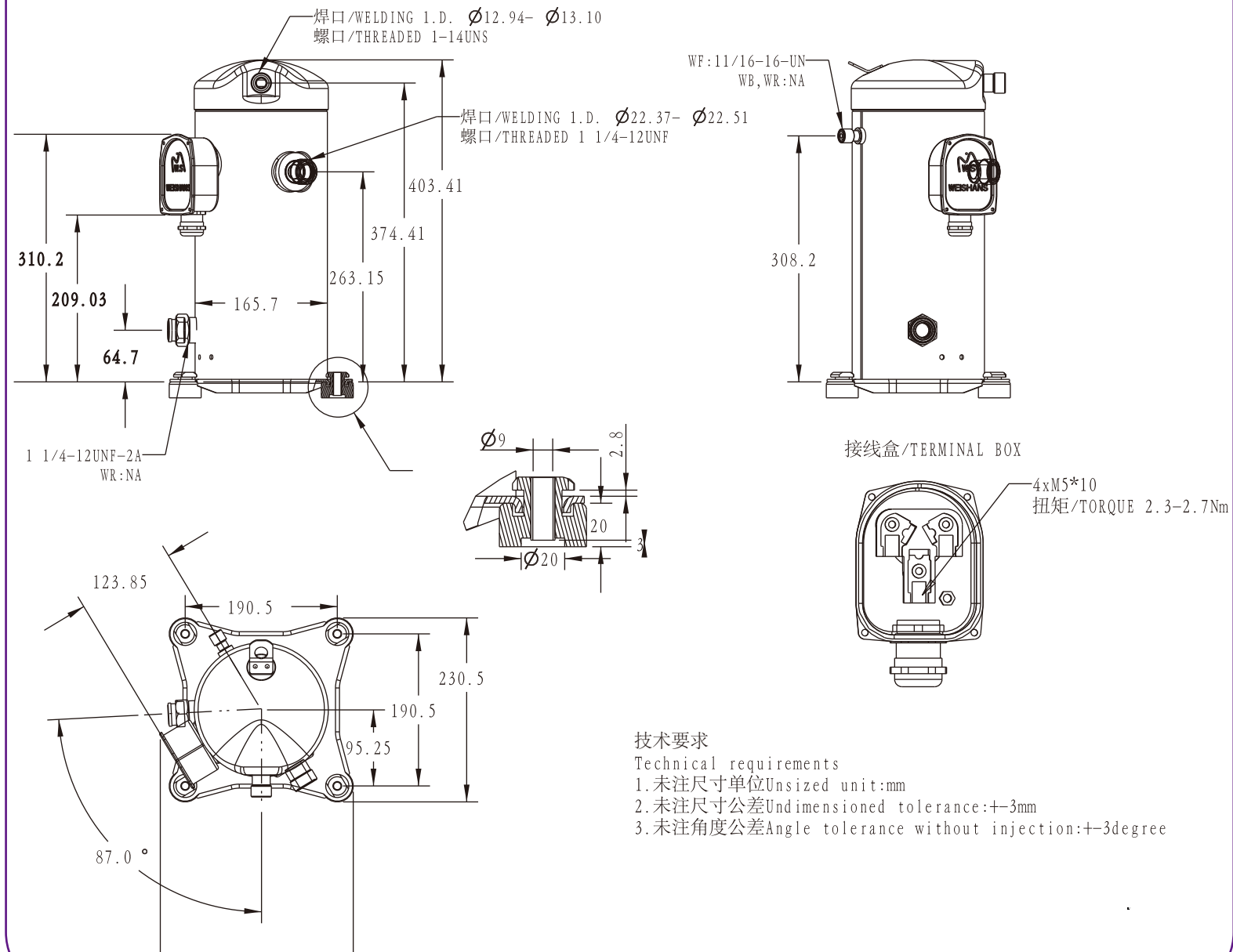
性能参数基于吸气温度20.0°C, 过冷度0.0K。
Performance Based on Return Gas Temp. 20.0°C and Subcooling 0.0K.

型号Model	项目Item (KW)	Tc\Te	-40°C	-35°C	-30°C	-25°C	-20°C	-15°C	-10°C	-5°C	0°C		
WF15KE-TFD-GL1	Q	60°C							4.79	5.76	6.96	8.45	
	P							5.02	5.25	5.49	5.76		
	Q	55°C	1.97	2.63	3.27	3.95	4.72	5.64	6.75	8.11	9.78		
	P		3.45	3.75	4	4.23	4.44	4.64	4.86	5.1	5.37		
	Q	50°C	2.28	2.98	3.68	4.44	5.31	6.34	7.59	9.11	10.95		
	P		3.21	3.47	3.69	3.89	4.07	4.27	4.47	4.71	4.99		
	Q	45°C	2.49	3.23	3.99	4.82	5.79	6.93	8.31	9.98	11.99		
	P		2.96	3.18	3.37	3.55	3.72	3.9	4.11	4.35	4.64		
	Q	40°C	2.64	3.41	4.22	5.13	6.18	7.43	8.94	10.75	12.92		
	P		2.72	2.9	3.07	3.22	3.38	3.56	3.76	4.01	4.31		
	Q	35°C	2.76	3.56	4.41	5.38	6.52	7.87	9.5	11.45	13.78		
	P		2.48	2.64	2.78	2.92	3.07	3.24	3.44	3.7	4.02		
	Q	30°C	2.87	3.68	4.58	5.61	6.82	8.27	10.01	12.1	14.58		
	P		2.25	2.38	2.51	2.63	2.78	2.95	3.16	3.44	3.77		
	Q	25°C	2.99	3.82	4.75	5.84	7.12	8.66	10.51	12.73	15.36		
	P		2.05	2.16	2.27	2.39	2.53	2.7	2.93	3.22	3.58		
	Q	20°C	3.16	4	4.96	6.09	7.44	9.07	11.02	13.36	16.13		
	P		1.88	1.97	2.07	2.18	2.32	2.5	2.74	3.05	3.44		
	Q	15°C	3.4	4.25	5.23	6.4	7.81	9.52	11.58	14.03			
	P		1.74	1.82	1.91	2.02	2.16	2.36	2.62	2.95			
	Q	10°C	3.74	4.58	5.58	6.79	8.26	10.04	12.19				
	P		1.65	1.71	1.8	1.91	2.07	2.28	2.55				
	WF18KE-TFD-GL1	Q	60°C							5.61	6.74	8.15	9.89
		P							5.88	6.14	6.43	6.75	
Q		55°C	2.31	3.08	3.83	4.63	5.53	6.6	7.9	9.5	11.45		
P			4.04	4.39	4.68	4.95	5.19	5.43	5.68	5.96	6.29		
Q		50°C	2.67	3.48	4.31	5.2	6.22	7.42	8.89	10.66	12.82		
P			3.76	4.06	4.32	4.55	4.77	4.99	5.24	5.52	5.85		
Q		45°C	2.92	3.78	4.67	5.65	6.77	8.11	9.73	11.68	14.03		
P			3.47	3.73	3.95	4.15	4.35	4.57	4.81	5.09	5.43		
Q		40°C	3.09	4	4.94	6	7.23	8.7	10.46	12.58	15.13		
P			3.18	3.4	3.59	3.77	3.96	4.16	4.4	4.69	5.05		
Q		35°C	3.23	4.16	5.16	6.3	7.63	9.21	11.11	13.4	16.13		
P			2.9	3.08	3.25	3.41	3.59	3.79	4.03	4.33	4.71		
Q		30°C	3.36	4.31	5.36	6.56	7.98	9.68	11.72	14.16	17.06		
P			2.64	2.79	2.94	3.08	3.25	3.45	3.7	4.02	4.42		
Q		25°C	3.5	4.48	5.56	6.83	8.33	10.14	12.3	14.89	17.97		
P			2.4	2.53	2.66	2.79	2.96	3.16	3.43	3.76	4.19		
Q		20°C	3.7	4.69	5.81	7.13	8.71	10.61	12.9	15.64	18.88		
P			2.2	2.3	2.42	2.55	2.72	2.93	3.21	3.57	4.03		
Q		15°C	3.98	4.97	6.12	7.49	9.15	11.14	13.55	16.42			
P			2.04	2.13	2.23	2.36	2.53	2.76	3.06	3.45			
Q		10°C	4.37	5.36	6.54	7.95	9.67	11.75	14.27				
P			1.93	2.01	2.1	2.24	2.42	2.66	2.99				
WF25KE-TFD-GL1		Q	60°C							6.12	7.36	8.9	10.8
		P							6.42	6.71	7.02	7.37	
	Q	55°C	2.52	3.36	4.18	5.05	6.04	7.21	8.63	10.37	12.5		
	P		4.41	4.79	5.12	5.4	5.67	5.93	6.21	6.51	6.87		
	Q	50°C	2.91	3.81	4.7	5.68	6.79	8.11	9.7	11.64	14		
	P		4.11	4.43	4.71	4.97	5.21	5.45	5.72	6.02	6.38		
	Q	45°C	3.19	4.13	5.1	6.17	7.4	8.86	10.62	12.76	15.32		
	P		3.79	4.07	4.31	4.54	4.76	4.99	5.25	5.56	5.93		
	Q	40°C	3.38	4.36	5.4	6.55	7.9	9.5	11.42	13.74	16.52		
	P		3.47	3.71	3.92	4.12	4.32	4.55	4.81	5.12			

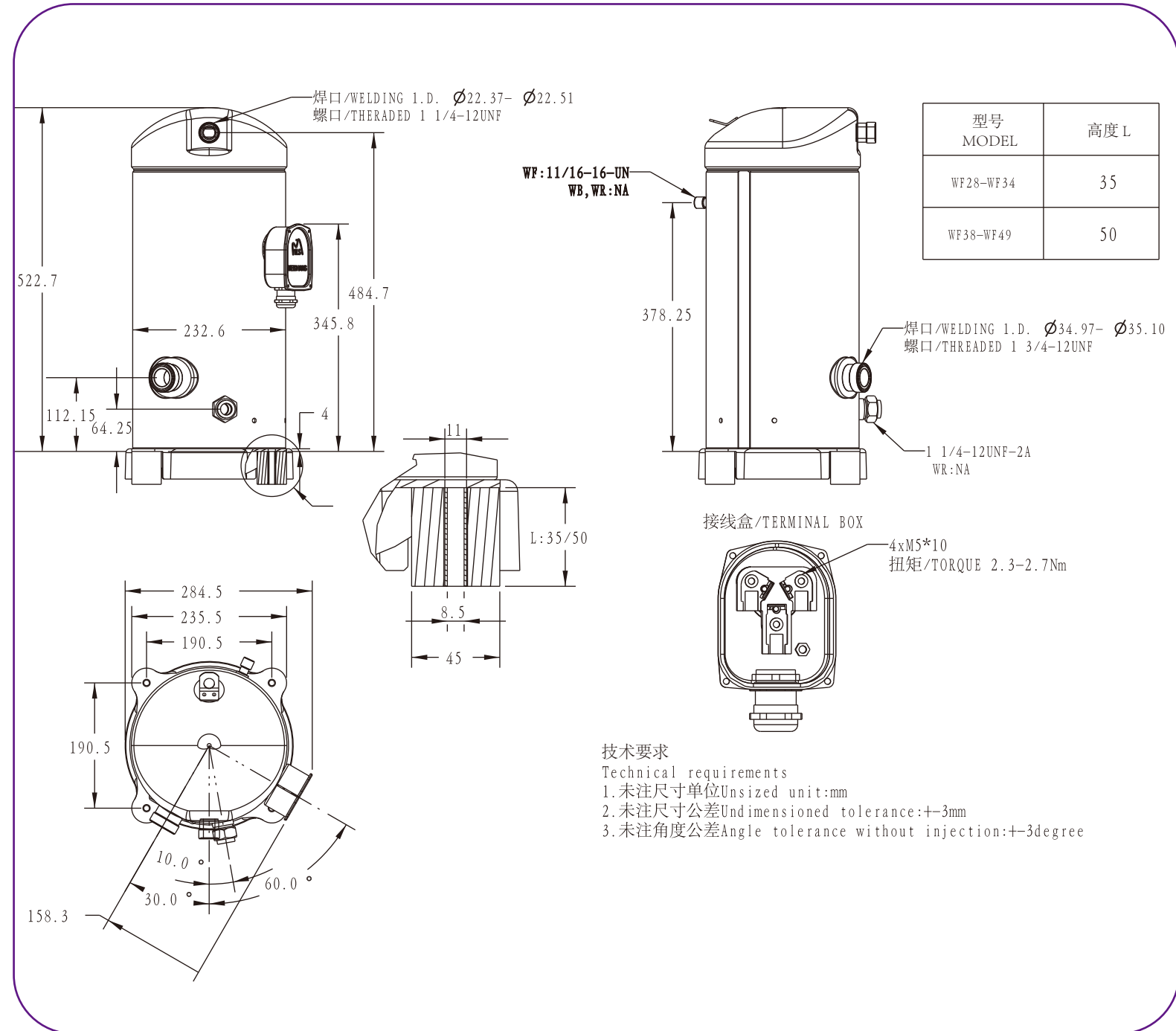
型号Model	项目Item (KW)	Tc\Te	-40°C	-35°C	-30°C	-25°C	-20°C	-15°C	-10°C	-5°C	0°C	
WF28KE-TFD-GL1	Q	60°C						7.2	8.66	10.47	12.7	
	P						7.54	7.89	8.25	8.66		
	Q	55°C	2.97	3.95	4.92	5.94	7.1	8.47	10.15	12.19	14.7	
	P		5.19	5.63	6.02	6.35	6.67	6.97	7.3	7.66	8.07	
	Q	50°C	3.42	4.47	5.53	6.67	7.98	9.53	11.41	13.69	16.46	
	P		4.83	5.21	5.54	5.84	6.12	6.41	6.73	7.08	7.51	
	Q	45°C	3.75	4.85	6	7.25	8.7	10.42	12.49	15	18.02	
	P		4.45	4.79	5.07	5.33	5.59	5.86	6.17	6.53	6.97	
	Q	40°C	3.97	5.13	6.35	7.71	9.29	11.17	13.43	16.16	19.42	
	P		4.08	4.36	4.61	4.84	5.08	5.35	5.65	6.02	6.48	
	Q	35°C	4.15	5.34	6.63	8.09	9.79	11.83	14.27	17.2	20.71	
	P		3.72	3.96	4.17	4.38	4.61	4.87	5.18	5.56	6.04	
	Q	30°C	4.31	5.54	6.88	8.43	10.25	12.43	15.05	18.18	21.91	
	P		3.38	3.58	3.77	3.96	4.17	4.43	4.76	5.16	5.67	
	Q	25°C	4.5	5.75	7.15	8.77	10.7	13.02	15.8	19.13	23.08	
	P		3.08	3.25	3.41	3.59	3.8	4.06	4.4	4.83	5.38	
	Q	20°C	4.75	6.02	7.46	9.15	11.19	13.63	16.57	20.08	24.25	
	P		2.82	2.96	3.1	3.27	3.49	3.76	4.12	4.58	5.17	
	Q	15°C	5.11	6.38	7.86	9.62	11.74	14.31	17.4	21.09		
	P		2.61	2.73	2.87	3.03	3.25	3.54	3.93	4.43		
	Q	10°C	5.61	6.89	8.39	10.21	12.42	15.09	18.32			
	P		2.47	2.58	2.7	2.87	3.1	3.42	3.84			
	WF34KE-TFD-GL1	Q	60°C						9.38	11.28	13.64	16.55
		P						9.83	10.28	10.75	11.29	
Q		55°C	3.86	5.15	6.41	7.74	9.25	11.04	13.22	15.89	19.16	
P			6.76	7.34	7.84	8.28	8.69	9.09	9.51	9.98	10.52	
Q		50°C	4.46	5.83	7.21	8.7	10.4	12.42	14.87	17.84	21.45	
P			6.29	6.79	7.22	7.61	7.98	8.36	8.76	9.23	9.78	
Q		45°C	4.88	6.32	7.81	9.45	11.34	13.58	16.28	19.55	23.48	
P			5.81	6.24	6.61	6.95	7.29	7.64	8.04	8.52	9.08	
Q		40°C	5.18	6.69	8.27	10.04	12.1	14.56	17.51	21.06	25.31	
P			5.32	5.69	6.01	6.31	6.62	6.97	7.37	7.85	8.44	
Q		35°C	5.41	6.97	8.64	10.54	12.76	15.41	18.6	22.42	26.99	
P			4.85	5.16	5.44	5.71	6	6.34	6.75	7.25	7.88	
Q		30°C	5.62	7.22	8.97	10.98	13.36	16.2	19.61	23.69	28.56	
P			4.41	4.67	4.91	5.16	5.44	5.78	6.2	6.73	7.39	
Q		25°C	5.86	7.49	9.31	11.43	13.94	16.96	20.59	24.93	30.08	
P			4.01	4.23	4.44	4.67	4.95	5.29	5.74	6.3	7.01	
Q		20°C	6.19	7.84	9.72	11.93	14.58	17.76	21.59	26.17	31.6	
P			3.67	3.86	4.05	4.27	4.54	4.9	5.37	5.97	6.74	
Q		15°C	6.66	8.32	10.24	12.54	15.3	18.65	22.67	27.48		
P			3.41	3.56	3.73	3.95	4.24	4.62	5.12	5.77		
Q		10°C	7.32	8.98	10.94	13.3	16.18	19.67	23.88			
P			3.22	3.36	3.52	3.74	4.05	4.46	5			
WF38KE-TFD-GL1		Q	60°C						10.82	13.01	15.72	19.08
		P						11.33	11.85	12.4	13.02	
	Q	55°C	4.45	5.94	7.39	8.92	10.67	12.73	15.24	18.32	22.08	
	P		7.8	8.47	9.04	9.54	10.01	10.48	10.97	11.51	12.13	
	Q	50°C	5.14	6.72	8.31	10.03	11.99	14.32	17.14	20.57	24.73	
	P		7.25	7.83	8.33	8.77	9.2	9.63	10.1	10.64	11.28	
	Q	45°C	5.63	7.29	9.01	10.89	13.07	15.65	18.77	22.54	27.07	
	P		6.69	7.19	7.62	8.01	8.4	8.81	9.27	9.82	10.47	
	Q	40°C	5.97	7.71	9.54	11.58	13.95	16.78	20.18	24.28	29.18	
	P		6.13	6.56	6.93	7.28	7.64	8.03	8.49	9.05	9.74	
	Q	35°C	6.23	8.03	9.96	12.15	14.71	17.77	21.44	25.85	31.11	
	P		5.59	5.95	6.27	6.58	6.92	7.31	7.78	8.36	9.08	
	Q	30°C	6.48	8.32	10.34	12.66	15.4	18.67	22.6	27.31	32.92	
	P		5.08	5.39	5.66	5.95	6.27	6.66	7.15	7.76	8.52	
	Q	25°C	6.76	8.64	10.74	13.18	16.08	19.56	23.74	28.74	34.68	
	P		4.63	4.88	5.12	5.39	5.71	6.1	6.61	7.26	8.08	
	Q	20°C	7.14	9.04	11.2	13.75	16.8	20.48	24.89	30.17	36.43	
	P		4.24	4.45	4.66	4.92	5.24	5.65	6.19	6.89	7.77	
	Q	15°C	7.68	9.59	11.81	14.45	17.64	21.5	26.14	31.68		
	P		3.93	4.11	4.3	4.55	4.89	5.33	5.91	6.65		
	Q	10°C	8.43	10.35	12.61	15.34	18.65	22.68	27.53			
	P		3.72	3.87	4.06	4.31	4.66	5.14	5.76			

性能参数基于吸气温度20.0°C，过冷度0.0K。
Performance Based on Return Gas Temp. 20.0°C and Subcooling 0.0K.

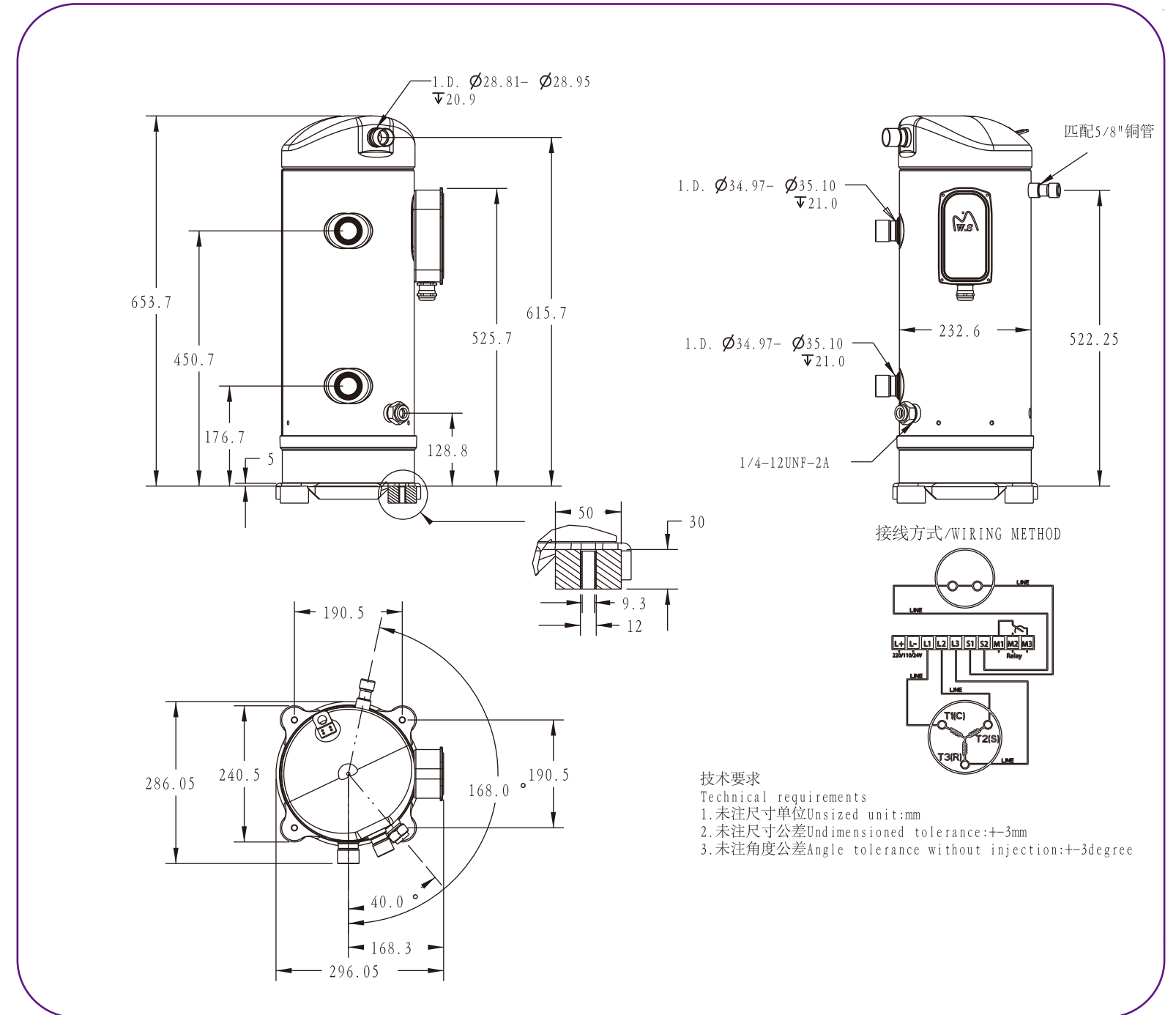
型号Model	项目Item (KW)	Tc\Te	-40°C	-35°C	-30°C	-25°C	-20°C	-15°C	-10°C	-5°C	0°C	
WF49KE-TFD-GL1	Q	60°C						14.11	16.97	20.51	24.89	
	P						14.79	15.45	16.17	16.98		
	Q	55°C	5.81	7.75	9.64	11.64	13.91	16.61	19.89	23.9	28.81	
	P		10.17	11.04	11.79	12.45	13.06	13.67	14.31	15.01	15.82	
	Q	50°C	6.71	8.77	10.84	13.08	15.64	18.69	22.36	26.84	32.26	
	P		9.46	10.21	10.86	11.45	12	12.57	13.18	13.88	14.71	
	Q	45°C	7.34	9.51	11.75	14.21	17.05	20.42	24.49	29.4	35.32	
	P		8.73	9.38	9.94	10.45	10.96	11.49	12.1	12.81	13.66	
	Q	40°C	7.79	10.05	12.44	15.11	18.2	21.89	26.33	31.67	38.07	
	P		8	8.55	9.04	9.49	9.96	10.48	11.08	11.81	12.7	
	Q	35°C	8.13	10.48	13	15.85	19.19	23.18	27.97	33.72	40.58	
	P		7.29	7.76	8.18	8.59	9.03	9.53	10.15	10.9	11.84	
	Q	30°C	8.45	10.85	13.49	16.52	20.09	24.36	29.49	35.63	42.95	
	P		6.63	7.02	7.39	7.76	8.18	8.69	9.32	10.12	11.12	
	Q	25°C	8.81	11.27	14	17.19	20.97	25.51	30.96	37.49	45.23	
	P		6.04	6.36	6.68	7.03	7.44	7.96	8.63	9.47	10.54	
	Q	20°C	9.31	11.79	14.62	17.94	21.92	26.71	32.47	39.36	47.53	
	P		5.53	5.8	6.08	6.42	6.83	7.37	8.08	8.98	10.13	
	Q	15°C	10.01	12.51	15.41	18.86	23.02	28.04	34.1	41.33		
	P		5.12	5.36	5.62	5.94	6.37	6.95	7.7	8.68		
	Q	10°C	11	13.5	16.45	20.01	24.33	29.58	35.91			
	P		4.85	5.05	5.3	5.63	6.08	6.7	7.52			
	WF60KE-TWD-GL1	Q	60°C						18.43	22.16	26.78	32.5
		P						19.31	20.18	21.12	22.17	
Q		55°C	7.59	10.12	12.59	15.2	18.17	21.69	25.97	31.21	37.62	
P			13.28	14.42	15.39	16.26	17.06	17.85	18.68	19.6	20.66	
Q		50°C	8.76	11.45	14.16	17.08	20.43	24.4	29.2	35.04	42.12	
P			12.35	13.34	14.18	14.94	15.67	16.41	17.21	18.13	19.21	
Q		45°C	9.58	12.42	15.34	18.55	22.26	26.66	31.97	38.39	46.12	
P			11.4	12.25	12.98	13.65	14.31	15.01	15.8	16.72	17.84	
Q		40°C	10.17	13.13	16.24	19.72	23.77	28.59	34.38	41.35	49.71	
P			10.45	11.17	11.8	12.4	13.01	13.68	14.47	15.42	16.58	
Q		35°C	10.62	13.68	16.97	20.69	25.06	30.27	36.52	44.03	52.99	
P			9.53	10.13	10.68	11.22	11.79	12.45	13.25	14.24	15.46	
Q		30°C	11.03	14.17	17.61	21.57	26.23	31.81	38.5	46.53	56.08	
P			8.66	9.17	9.65	10.13	10.68	11.35	12.17	13.21	14.51	
Q		25°C	11.51	14.71	18.29	22.44	27.38	33.31	40.43	48.95	59.06	
P			7.88	8.31	8.73	9.18	9.72	10.4	11.26	12.37	13.76	
Q		20°C	12.15	15.4	19.09	23.43	28.62	34.88	42.4	51.39	62.06	
P			7.21	7.57	7.94	8.38	8.92	9.63	10.55	11.73	13.23	
Q		15°C	13.07	16.34	20.12	24.62	30.05	36.62	44.52	53.96		
P			6.69	6.99	7.33	7.76	8.32	9.07	10.06	11.33		
Q		10°C	14.37	17.63	21.48	26.13	31.77	38.63	46.89			
P			6.33	6.59	6.92	7.35	7.94	8.75	9.82			
WF75KE-TWD-GL1		Q	60°C						22.68	27.27	32.96	40
		P						23.76	24.84	25.99	27.29	
	Q	55°C	9.34	12.45	15.49	18.71	22.36	26.69	31.96	38.41	46.3	
	P		16.35	17.75	18.95	20.01	20.99	21.97	22.99	24.12	25.43	
	Q	50°C	10.78	14.09	17.42	21.02	25.14	30.03	35.94	43.13	51.84	
	P		15.21	16.42	17.46	18.39	1					

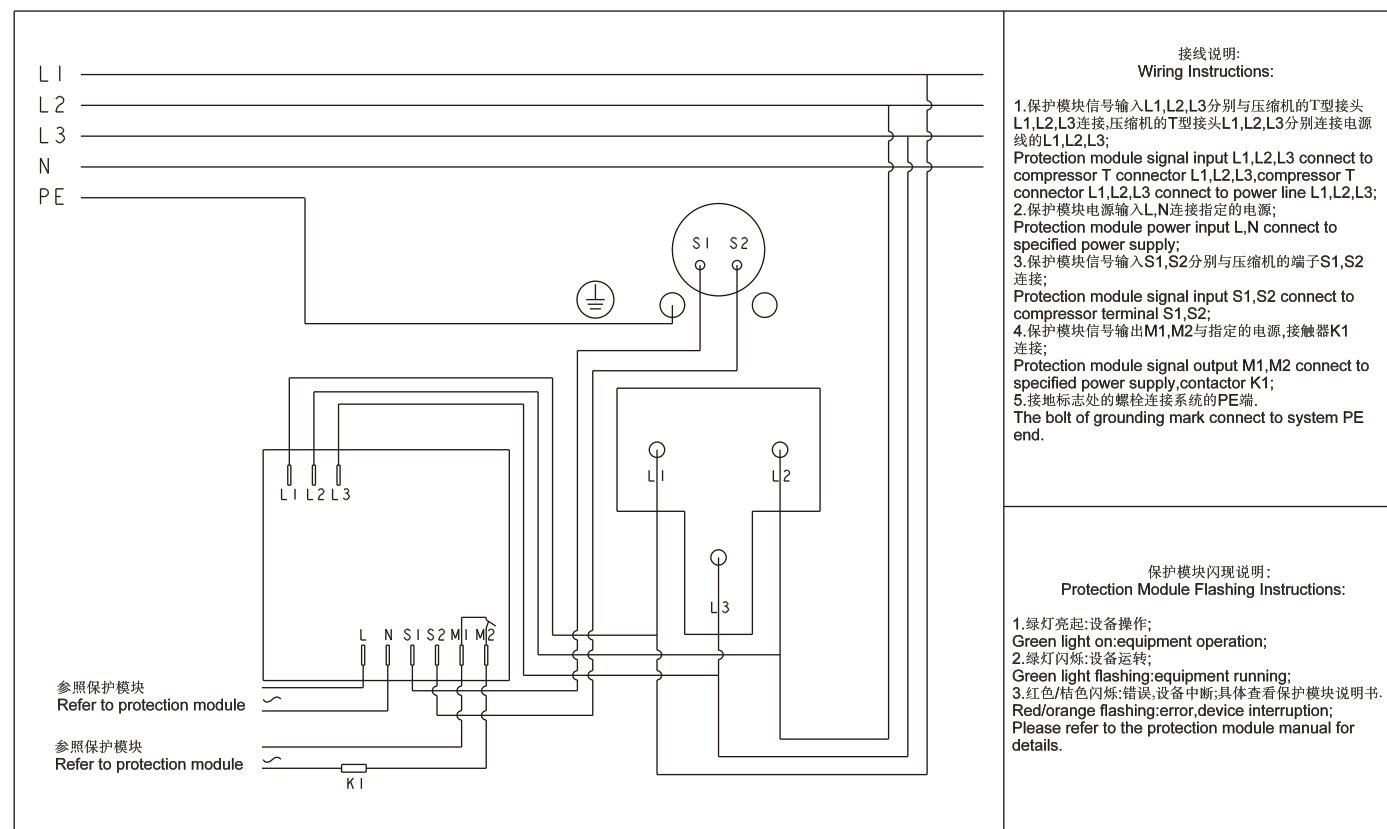


外形尺寸 | Dimensional WF28-WF49



Dimensional | 外形尺寸 WF60-WF75





为山® 涡旋压缩机

WEISHANS SCROLL COMPRESSOR

2HP-25HP

致力于为客户提供绿色环保的空调,冷水机,热泵及冷冻冷藏解决方案

We are committed to providing our customers with environmentally friendly air conditioning, chillers, heat pumps, and refrigeration solutions

