

苏州为山之环境技术有限公司

Suzhou Weishans Climate Technologies Co.,Ltd



超高温应用涡旋压缩机

ULTRA HIGH TEMP. SCROLL COMPRESSOR

联系我们 / Contact Us

公司名称: 苏州为山之环境技术有限公司 Suzhou Weishans Climate Technologies Co.,Ltd

公司官网 / Web:www.weishans.com

地址: 江苏省苏州市相城区黄埭镇咏春科技园

Address: Yongchun Science and Technology Park, Huangdai Town, Xiangcheng District, Suzhou City, Jiangsu Province

免责声明

技术数据在印刷前已经校对过,印刷之后有再更新的可能。如有对某一参数确认的需求,请联系苏州为山之环境技术有限公司。为山之对参数中可能存在的差错概不承担任何责任,为山之保留自行改变其产品而不预先通知的权利。

Disclaimer

Our technical data have been checked before printing, but it is possible for data to be updated after printing. If you need to confirm a certain parameter, please contact Suzhou Weishans Climate Technology Co., Ltd. Weishans will not take any responsibilities for any possible errors in the parameters and reserve the right to change its products without prior notice.

Rev:202502

苏州为山之环境技术有限公司

Suzhou Weishans Climate Technologies Co.,Ltd

苏州为山环境技术有限公司成立于 2018 年 6 月，坐落于工业发达的历史名城苏州，专注于开发节能环保型压缩机，是一家创新型科技企业。为山之研发的涡旋式热泵压缩机核心技术已取得重大突破，并成功应用于多个领域，包括但不限于工业制冷、商用热水、工业蒸汽、农业烘干、制冷工程、精密空调、轨道交通制冷、转轮除湿及工业余热回收等。

公司研发的系列热泵蒸汽涡旋压缩机以及国内率先推出的防爆系列涡旋压缩机，显著拓展了涡旋压缩机的应用范围。公司自主研发的强力增焓技术也进一步扩大了压缩机的运行范围，使得在常温条件下使用同一工质实现高效蒸汽成为现实。

公司拥有先进的自动化生产线和高精度检测与加工设备，创新工艺流程，具备年产 10 万台涡旋压缩机的组装生产能力，产品覆盖从 2 匹至 25 匹。公司产品通过了 CCC、CE、CB、ROHS & REACH 和 ISO 9001 等多项国际认证。

公司高度重视知识产权保护，至今已申请 41 项知识产权，其中包括 13 项发明专利（5 项已获授权）、27 项实用新型专利（21 项已获授权）和 1 项软件著作权。公司荣获江苏省民营科技企业和国家级高新技术企业称号。

公司注重质量管理体系和信息化建设，秉持以人为本的理念，组建了一支具有竞争力的人才队伍，激发员工的积极性和创造力，不断提高运营效率。公司秉承创新、诚信的理念，致力于为客户创造更多价值，携手实现共赢。

展望未来，公司将继续加大研发投入，致力于为客户提供绿色环保的热泵及冷冻压缩机解决方案，以减少全球碳排放为使命，为构建绿色地球家园贡献力量。

Suzhou Weishans Climate Technology Co., Ltd was established in June 2018, it is located in Suzhou with developed industry and long history city, and focuses on the development of energy-saving and environment protection compressors. It is an innovative technology enterprise. The core technology of the scroll heat pump compressors developed by Weishans has made significant breakthroughs and has been successfully applied in multiple fields, including but not limited to industrial refrigeration, commercial hot water, industrial steam, agricultural drying, refrigeration engineering, precision air conditioning, rail transit refrigeration, rotary wheel dehumidification and industrial waste heat recovery, etc.

The series of heat pump steam scroll compressors developed by the company and the explosion-proof series of scroll compressors first launched in China have significantly expanded the application range of scroll compressors. The company's independently developed strong enthalpy increase technology has also further expanded the operating range of the compressor, making it possible to achieve efficient steam using the same working fluid under normal temperature conditions.

The company owns advanced automated production lines and high-precision testing and machining equipments, innovated technological process, and has an annual assembly production capacity of 100,000 scroll compressors, with products covering the range from 2HP to 25HP. The company's products have passed multiple international certifications including CCC, CE, CB, ROHS & REACH and ISO 9001.

The company attaches great importance to the protection of intellectual property rights and has applied for 41 intellectual property rights so far, including 13 invention patents (5 have been authorized), 27 utility model patents (21 have been authorized) and 1 software copyright. The company has been awarded the titles of Jiangsu Private Technology Enterprise and National High-tech Enterprise.

The company attaches great importance to the quality management system and information construction, adheres to the people-oriented concept, and has formed a competitive talent team to stimulate the enthusiasm and creativity of employees and continuously improve operational efficiency. The company adheres to the concepts of innovation and integrity, and is committed to creating more value for customers and achieving win-win results together.

Looking forward to the future, the company will continue to increase investment in research and development, and is committed to providing customers with green and environmentally heat pump and refrigeration compressor solutions. With the mission of reducing global carbon emissions, it will contribute to building a green Earth home.

CONTENTS 目录

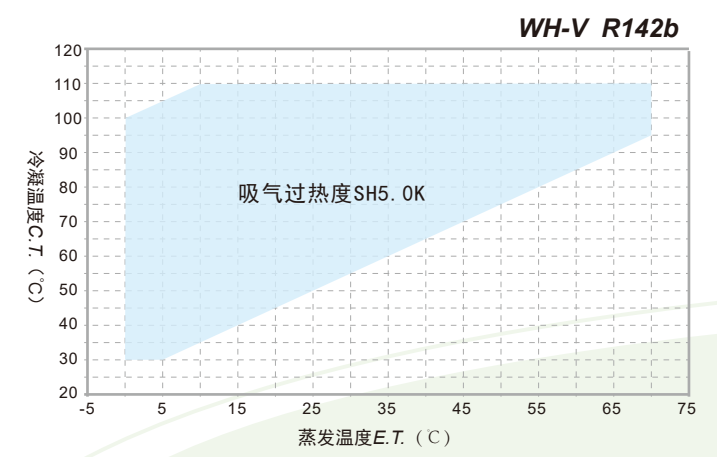
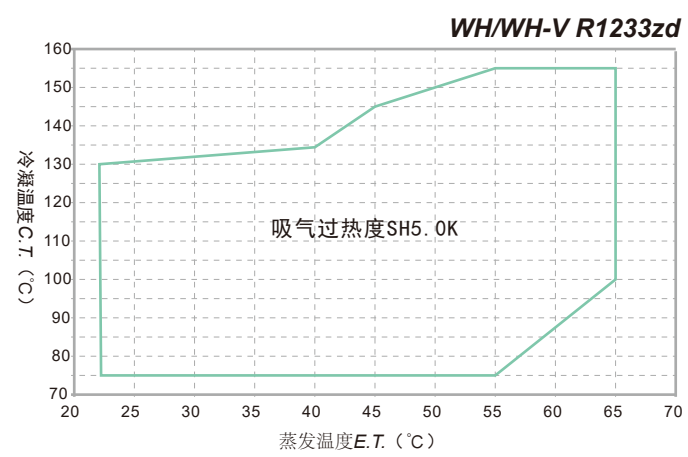
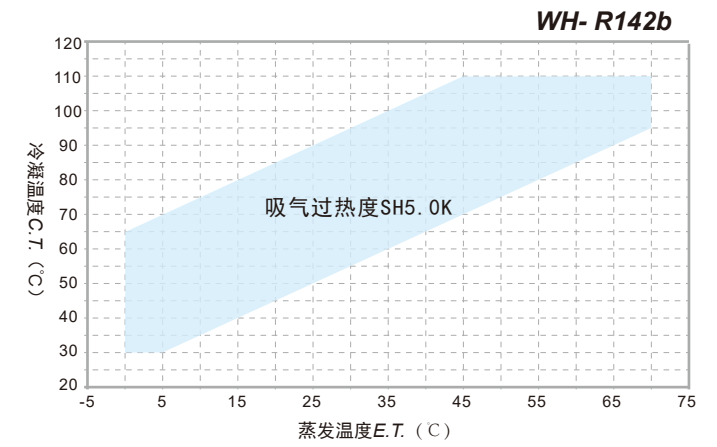
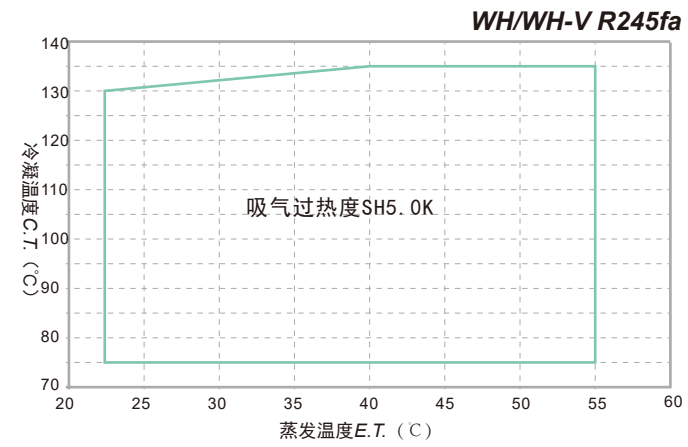
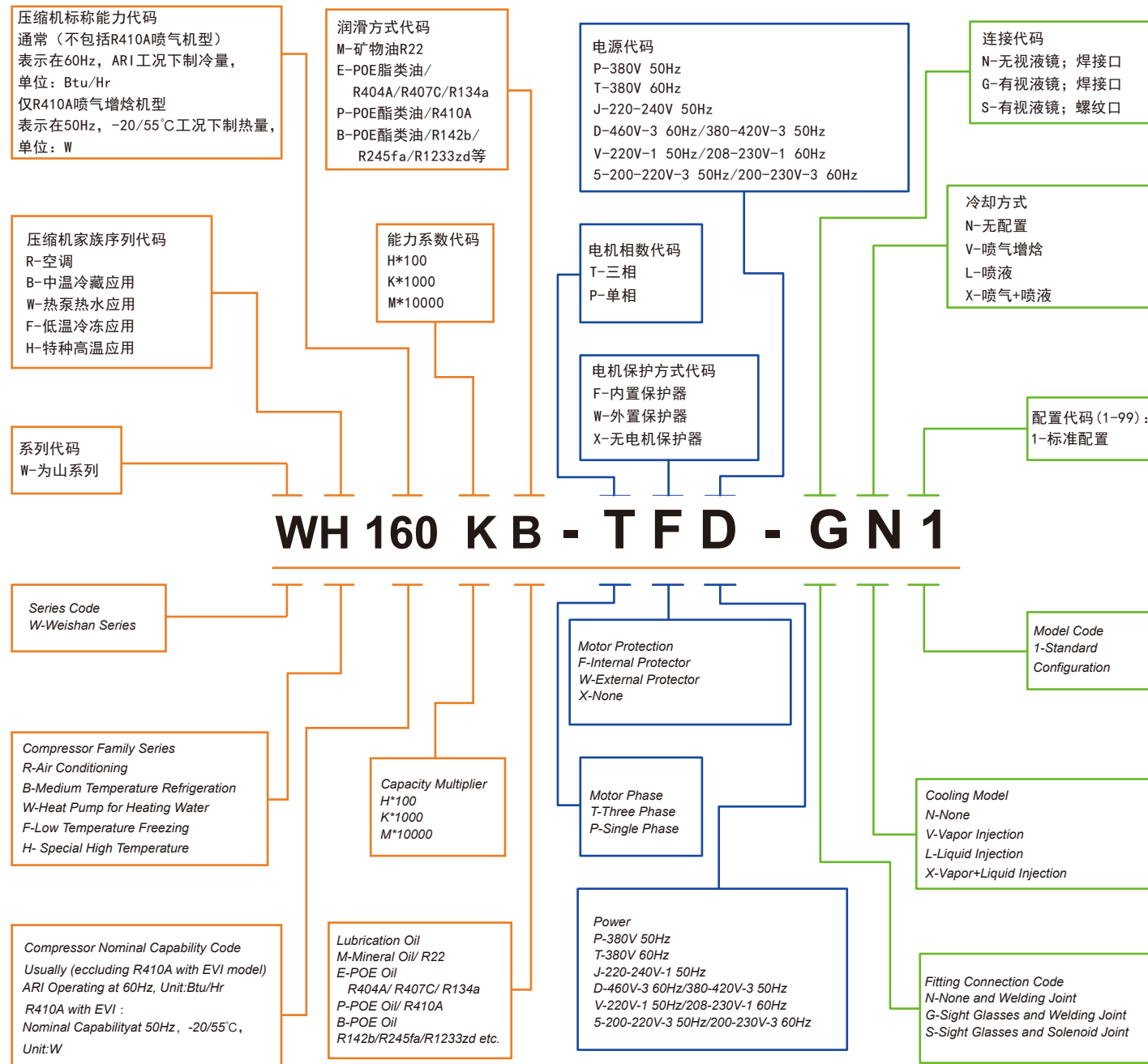
命名规则 <i>Nomenclature</i>	01
应用范围 <i>Application Range</i>	02
案例比较 <i>Case comparison</i>	03
性能参数 <i>Specification</i>	05
制热量 <i>Heating Capacity</i>	09
<i>R142b</i>	09
<i>R245fa</i>	27
<i>R1233zd</i>	33
外形尺寸 <i>Dimension</i>	43
保护模块接线图 <i>Protection module wiring diagram</i>	51

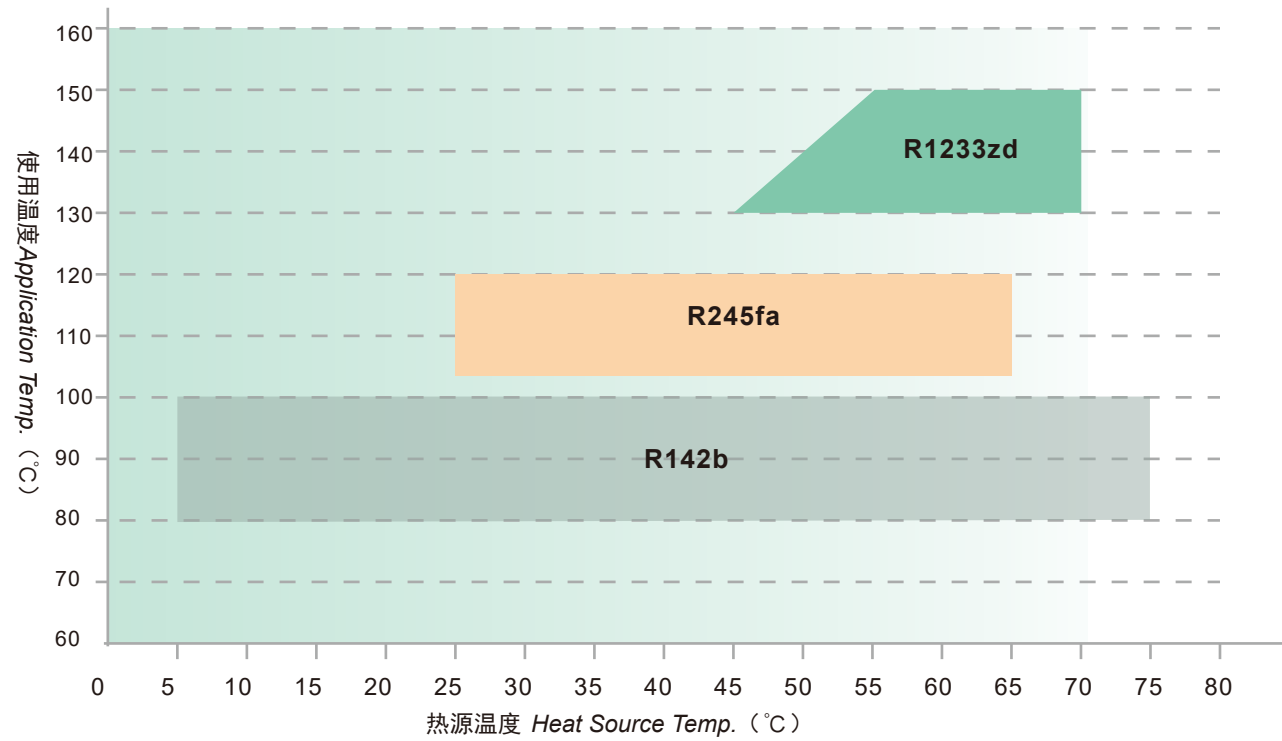
命名规则

Nomenclature

应用范围

Application Range





型号 Model	WH600KB-TWD-GV1	方案 Solution	热泵 Heat Pump	电锅炉 Electric Boiler	燃煤 Fuel Coal	燃油 Fuel Oil	燃气 Gas
制冷剂 Refrigerant	R245fa	蒸汽温度 Steam Temp.	120°C	120°C	120°C	120°C	120°C
蒸汽温度 Steam Temperature	120°C	蒸汽压力 Steam Pre.	0.1MPaG	0.1MPaG	0.1MPaG	0.1MPaG	0.1MPaG
蒸汽压力 Steam Pressure	0.1MPaG	制热量 Heating Cap.	65kW	65kW	65kW	65kW	65kW
热源温度 Heat Source Temperature	60°C	蒸汽量 Steam Flow	90kg/h	90kg/h	90kg/h	90kg/h	90kg/h
制热量 Heating Capacity	65kW	能效比COP	3.04	1.00	0.75	0.90	0.90
蒸汽量 Stem Flow	90kg/h	功耗 Power Consumption	21kW/h	65kW/h	10.4kg/h	7.9L/h	7.2m³/h
能效比COP	3.04	单位成本 Unit Cost	0.8RMB/(kWh)	0.8RMB/(kWh)	2.0RMB/kg	8.0RMB/L	3.5RMB/m³
热源温度范围 Heat Source Temperature Range	25~65°C	运营成本 Operating Cost	16.8RMB/h	52RMB/h	20.8RMB/h	63.2RMB/h	25.2RMB/h
蒸汽压力范围 Steam Pressure Range	0.0~0.1MPaG	能源消耗 Energy Consumption	0.076GJ/h	0.234GJ/h	0.312GJ/h	0.260GJ/h	0.260GJ/h
		CO ₂ 排放因子 CO ₂ Emission Factor	158.3kg/GJ	158.3kg/GJ	92.5kg/GJ	77.5kg/GJ	56.3kg/GJ
		CO ₂ 排放量 CO ₂ Emission	12.0kg/h	37.0kg/h	28.9kg/h	20.2kg/h	14.6kg/h

性能参数

Specification

型号 Model	WH70KB-TFD-GN1	WH120KB-TFD-GN1	WH160KB-TFD-GN1	WH190KB-TFD-GN1	WH240KB-TFD-GN1	
电制Power Supply	380-420V/3~/50Hz or 460V/3~/60Hz					
名义功率(HP) Power in Horse Power	3	5	7	8	10	
排量(cc/rev) Displacement	50.6	84.5	108.0	127.0	166.1	
R142b	名义制热量(W) Nominal Heating Capacity	10712	17889	22864	26887	35165
	名义输入功率(W) Nominal Input Power	2766	4619	5904	6942	9080
	名义工况能效比(W/W) Nominal COP	3.87	3.87	3.87	3.87	3.87
R245fa	名义制热量(W) Nominal Heating Capacity	6408	10701	13677	16083	21034
	名义输入功率(W) Nominal Input Power	2218	3704	4734	5567	7281
	名义工况能效比(W/W) Nominal COP	2.89	2.89	2.89	2.89	2.89
R1233zd	名义制热量(W) Nominal Heating Capacity	5639	9417	12036	14153	18511
	名义输入功率(W) Nominal Input Power	1952	3259	4166	4898	6406
	名义工况能效比(W/W) Nominal COP	2.89	2.89	2.89	2.89	2.89
名义工况电流(A) Nominal RLA	3.5	5.8	7.4	8.7	11.4	
堵转电流(LRA)(A)	45	85	85	120	120	
最大运行电流(MOC)(A)	6.5	10.9	14.0	16.4	21.5	
润滑油类型 Oil Type	POE					
润滑油初次充注量(L) Initial Charge Oil Volume	1.4	1.8		3.0		
润滑油重新充注量(L) Recharge Oil Volume	1.2	1.6		2.8		
重量(kg) Weight	28	38		66		

1. R142b 额定工况: 蒸发45.0°C, 冷凝100.0°C, 过热5.0K, 过冷10.0K, 环温35.0°C.
Rated Condition of R142b Refrigerant: E.T.45.0°C, C.T.100.0°C, S.H.5.0K, S.C.10.0K, A.T.35.0°C.
2. R245fa/R1233zd 额定工况: 蒸发50.0°C, 冷凝120.0°C, 过热5.0K, 过冷10.0K, 环温35.0°C.
Rated Condition of R245fa/R1233zd Refrigerant: E.T.50.0°C, C.T.120.0°C, S.H.5.0K, S.C.10.0K, A.T.35.0°C.

性能参数

Specification

型号 Model	WH280KB-TFD-GN1	WH360KB-TFD-GN1	WH470KB-TWD-GN1	WH600KB-TWD-GN1	
电制Power Supply	380-420V/3~/50Hz or 460V/3~/60Hz				
名义功率(HP) Power in Horse Power	12	15	20	25	
排量(cc/rev) Displacement	190.8	248.9	325.0	400.0	
R142b	名义制热量(W) Nominal Heating Capacity	40394	52694	68805	84683
	名义输入功率(W) Nominal Input Power	10430	13606	17766	21866
	名义工况能效比(W/W) Nominal COP	3.87	3.87	3.87	3.87
R245fa	名义制热量(W) Nominal Heating Capacity	24162	31520	41157	50655
	名义输入功率(W) Nominal Input Power	8363	10910	14246	17533
	名义工况能效比(W/W) Nominal COP	2.89	2.89	2.89	2.89
R1233zd	名义制热量(W) Nominal Heating Capacity	21263	27738	36219	44577
	名义输入功率(W) Nominal Input Power	7359	9600	12535	15428
	名义工况能效比(W/W) Nominal COP	2.89	2.89	2.89	2.89
名义工况电流(A) Nominal RLA	13.1	17.1	22.3	27.5	
堵转电流(LRA)(A)	120	149	290	290	
最大运行电流(MOC)(A)	24.7	32.2	42.0	51.7	
润滑油类型 Oil Type	POE				
润滑油初次充注量(L) Initial Charge Oil Volume		3.2		5.0	
润滑油重新充注量(L) Recharge Oil Volume		3.0		4.8	
重量(kg) Weight		66		92	

1. R142b 额定工况: 蒸发45.0°C, 冷凝100.0°C, 过热5.0K, 过冷10.0K, 环温35.0°C.
Rated Condition of R142b Refrigerant: E.T.45.0°C, C.T.100.0°C, S.H.5.0K, S.C.10.0K, A.T.35.0°C.
2. R245fa/R1233zd 额定工况: 蒸发50.0°C, 冷凝120.0°C, 过热5.0K, 过冷10.0K, 环温35.0°C.
Rated Condition of R245fa/R1233zd Refrigerant: E.T.50.0°C, C.T.120.0°C, S.H.5.0K, S.C.10.0K, A.T.35.0°C.

性能参数

Specification

型号 Model	WH70KB-TFD-GV1	WH120KB-TFD-GV1	WH160KB-TFD-GV1	WH190KB-TFD-GV1	WH240KB-TFD-GV1	
电制Power Supply	380-420V/3~/50Hz or 460V/3~/60Hz					
名义功率(HP) Power in Horse Power	3	5	7	8	10	
排量(cc/rev) Displacement	50.6	84.5	108.0	127.0	166.1	
R142b	名义制热量(W) Nominal Heating Capacity	11994	20030	25600	30104	39372
	名义输入功率(W) Nominal Input Power	2961	4945	6320	7432	9720
	名义工况能效比(W/W) Nominal COP	4.05	4.05	4.05	4.05	4.05
R245fa	名义制热量(W) Nominal Heating Capacity	7319	12222	15621	18369	24024
	名义输入功率(W) Nominal Input Power	2417	4037	5159	6067	7935
	名义工况能效比(W/W) Nominal COP	3.03	3.03	3.03	3.03	3.03
R1233zd	名义制热量(W) Nominal Heating Capacity	6440	10755	13746	16165	21141
	名义输入功率(W) Nominal Input Power	2127	3552	4540	5339	6982
	名义工况能效比(W/W) Nominal COP	3.03	3.03	3.03	3.03	3.03
名义工况电流(A) Nominal RLA	3.8	6.3	8.1	9.5	12.5	
堵转电流(LRA)(A)	45	85	85	120	120	
最大运行电流(MOC)(A)	6.5	10.9	14.0	16.4	21.5	
润滑油类型 Oil Type	POE					
润滑油初次充注量(L) Initial Charge Oil Volume	1.4	1.8		3.0		
润滑油重新充注量(L) Recharge Oil Volume	1.2	1.6		2.8		
重量(kg) Weight	28	38		66		

1. R142b 额定工况: 蒸发45.0°C, 冷凝100.0°C, 过热5.0K, 过冷10.0K, 环温35.0°C。
Rated Condition of R142b Refrigerant: E.T.45.0°C, C.T.100.0°C, S.H.5.0K, S.C.10.0K, A.T.35.0°C。
2. R245fa/R1233zd 额定工况: 蒸发50.0°C, 冷凝120.0°C, 过热5.0K, 过冷10.0K, 环温35.0°C。
Rated Condition of R245fa/R1233zd Refrigerant: E.T.50.0°C, C.T.120.0°C, S.H.5.0K, S.C.10.0K, A.T.35.0°C。

性能参数

Specification

型号 Model	WH280KB-TFD-GV1	WH360KB-TFD-GV1	WH470KB-TWD-GV1	WH600KB-TWD-GV1	
电制Power Supply	380-420V/3~/50Hz or 460V/3~/60Hz				
名义功率(HP) Power in Horse Power	12	15	20	25	
排量(cc/rev) Displacement	190.8	248.9	325.0	400.0	
R142b	名义制热量(W) Nominal Heating Capacity	45227	58999	77038	94816
	名义输入功率(W) Nominal Input Power	11165	14565	19018	23407
	名义工况能效比(W/W) Nominal COP	4.05	4.05	4.05	4.05
R245fa	名义制热量(W) Nominal Heating Capacity	27597	36000	47007	57855
	名义输入功率(W) Nominal Input Power	9115	11890	15525	19108
	名义工况能效比(W/W) Nominal COP	3.03	3.03	3.03	3.03
R1233zd	名义制热量(W) Nominal Heating Capacity	24285	31680	41366	50912
	名义输入功率(W) Nominal Input Power	8021	10463	13662	16815
	名义工况能效比(W/W) Nominal COP	3.03	3.03	3.03	3.03
名义工况电流(A) Nominal RLA	14.3	18.7	24.4	30.1	
堵转电流(LRA)(A)	120	149	290	290	
最大运行电流(MOC)(A)	24.7	32.2	42.0	51.7	
润滑油类型 Oil Type	POE				
润滑油初次充注量(L) Initial Charge Oil Volume		3.2		5.0	
润滑油重新充注量(L) Recharge Oil Volume		3.0		4.8	
重量(kg) Weight		66		92	

1. R142b 额定工况: 蒸发45.0°C, 冷凝100.0°C, 过热5.0K, 过冷10.0K, 环温35.0°C。
Rated Condition of R142b Refrigerant: E.T.45.0°C, C.T.100.0°C, S.H.5.0K, S.C.10.0K, A.T.35.0°C。
2. R245fa/R1233zd 额定工况: 蒸发50.0°C, 冷凝120.0°C, 过热5.0K, 过冷10.0K, 环温35.0°C。
Rated Condition of R245fa/R1233zd Refrigerant: E.T.50.0°C, C.T.120.0°C, S.H.5.0K, S.C.10.0K, A.T.35.0°C。

制热量

Heating Capacity

WH- R142b

型号 Model	项目Item (kW)	Tc\Te	0°C	10°C	20°C	30°C	40°C	45°C	50°C	55°C	60°C	65°C	70°C
WH70KB-TFD-GN1	Q	110°C						10.12	11.39	12.83	14.36	16.03	17.92
	P							3.16	3.25	3.35	3.36	3.33	3.30
	Q	105°C					9.23	10.42	11.74	13.22	14.80	16.53	18.48
	P						2.87	2.97	3.03	3.10	3.08	3.01	2.94
	Q	100°C					9.48	10.71	12.06	13.59	15.22	17.00	19.01
	P						2.69	2.77	2.80	2.84	2.79	2.67	2.56
	Q	95°C				7.52	9.72	10.98	12.37	13.94	15.61	17.44	19.50
	P					2.32	2.51	2.56	2.56	2.57	2.48	2.33	2.17
	Q	90°C				7.69	9.94	11.23	12.66	14.26	15.97	17.85	
	P					2.18	2.32	2.34	2.32	2.29	2.16	1.97	
	Q	85°C			5.99	7.84	10.14	11.47	12.93	14.57	16.32		
	P				1.86	2.02	2.12	2.11	2.06	2.00	1.83		
	Q	80°C			6.10	7.99	10.34	11.69	13.18	14.85			
	P				1.74	1.87	1.92	1.88	1.80	1.70			
	Q	75°C		4.65	6.20	8.13	10.52	11.90	13.41				
	P			1.46	1.62	1.71	1.70	1.64	1.52				
	Q	70°C		4.72	6.30	8.25	10.69	12.09					
	P			1.36	1.50	1.54	1.48	1.39					
	Q	65°C	3.50	4.78	6.38	8.37	10.84						
	P		1.11	1.27	1.37	1.37	1.26						
	Q	60°C	3.54	4.84	6.46	8.48							
	P		1.04	1.17	1.24	1.19							
	Q	50°C	3.61	4.94	6.60								
	P		0.89	0.97	0.96								
	Q	40°C	3.67										
	P		0.73										
	Q	30°C	3.71										
	P		0.57										

制热量基于吸气过热5.0K, 过冷10.0K。Heating Capacity Based on SH5.0K, SC10.0K.

制热量

Heating Capacity

WH- R142b

型号 Model	项目Item (kW)	Tc\Te	0°C	10°C	20°C	30°C	40°C	45°C	50°C	55°C	60°C	65°C	70°C
WH120KB-TFD-GN1	Q	110°C						16.90	19.02	21.43	23.98	26.76	29.92
	P						5.28	5.43	5.60	5.62	5.55	5.51	
	Q	105°C					15.41	17.41	19.60	22.08	24.72	27.60	30.86
	P						4.79	4.96	5.06	5.18	5.15	5.02	4.90
	Q	100°C					15.83	17.89	20.15	22.70	25.41	28.38	31.74
	P						4.49	4.62	4.68	4.74	4.65	4.46	4.28
	Q	95°C				12.55	16.22	18.34	20.66	23.28	26.07	29.12	32.57
	P					3.87	4.19	4.27	4.28	4.29	4.14	3.89	3.63
	Q	90°C				12.84	16.59	18.76	21.14	23.82	26.68	29.81	
	P					3.63	3.87	3.90	3.87	3.82	3.61	3.29	
	Q	85°C			10.01	13.10	16.94	19.15	21.59	24.32	27.25		
	P				3.11	3.38	3.54	3.53	3.44	3.33	3.06		
	Q	80°C			10.19	13.35	17.26	19.52	22.01	24.80			
	P				2.91	3.12	3.20	3.14	3.00	2.83			
	Q	75°C		7.76	10.36	13.57	17.57	19.87	22.40				
	P			2.43	2.71	2.85	2.84	2.74	2.54				
	Q	70°C		7.88	10.51	13.78	17.84	20.19					
	P			2.28	2.50	2.57	2.48	2.32					
	Q	65°C	5.84	7.98	10.66	13.98	18.10						
	P		1.85	2.12	2.28	2.29	2.10						
	Q	60°C	5.91	8.08	10.79	14.16							
	P		1.73	1.96	2.06	1.99							
	Q	50°C	6.03	8.24	11.02								
	P		1.48	1.61	1.60								
	Q	40°C	6.12										
	P		1.22										
	Q	30°C	6.19										
	P		0.94										

制热量基于吸气过热5.0K, 过冷10.0K。Heating Capacity Based on SH5.0K, SC10.0K.

制热量

Heating Capacity

WH- R142b

型号 Model	项目Item (kW)	Tc\Te	0°C	10°C	20°C	30°C	40°C	45°C	50°C	55°C	60°C	65°C	70°C
WH160KB-TFD-GN1	Q	110°C						21.60	24.31	27.38	30.64	34.21	38.24
	P							6.75	6.94	7.16	7.18	7.10	7.04
	Q	105°C					19.70	22.25	25.05	28.22	31.59	35.27	39.44
	P						6.12	6.34	6.47	6.62	6.58	6.42	6.27
	Q	100°C					20.23	22.86	25.75	29.01	32.48	36.27	40.57
	P						5.74	5.91	5.98	6.06	5.95	5.71	5.47
	Q	95°C				16.05	20.74	23.44	26.40	29.75	33.32	37.22	41.63
	P					4.95	5.35	5.46	5.47	5.48	5.29	4.97	4.63
	Q	90°C				16.41	21.21	23.98	27.02	30.44	34.10	38.10	
	P					4.64	4.95	4.99	4.95	4.89	4.62	4.20	
	Q	85°C			12.79	16.74	21.65	24.48	27.59	31.09	34.83		
	P				3.97	4.32	4.53	4.51	4.40	4.26	3.91		
	Q	80°C			13.02	17.06	22.06	24.95	28.13	31.70			
	P				3.72	3.99	4.09	4.01	3.83	3.62			
	Q	75°C		9.92	13.24	17.35	22.45	25.39	28.62				
	P			3.11	3.46	3.64	3.64	3.50	3.24				
	Q	70°C		10.07	13.44	17.62	22.81	25.80					
	P			2.91	3.20	3.29	3.17	2.96					
	Q	65°C	7.47	10.20	13.62	17.87	23.14						
	P		2.36	2.71	2.92	2.92	2.68						
	Q	60°C	7.55	10.32	13.79	18.09							
	P		2.21	2.50	2.64	2.54							
	Q	50°C	7.71	10.54	14.09								
	P		1.90	2.06	2.04								
	Q	40°C	7.82										
	P		1.56										
	Q	30°C	7.91										
	P		1.21										

制热量基于吸气过热5.0K, 过冷10.0K。Heating Capacity Based on SH5.0K, SC10.0K.

制热量

Heating Capacity

WH- R142b

型号 Model	项目Item (kW)	Tc\Te	0°C	10°C	20°C	30°C	40°C	45°C	50°C	55°C	60°C	65°C	70°C
WH190KB-TFD-GN1	Q	110°C						25.41	28.59	32.20	36.03	40.22	44.97
	P						7.93	8.16	8.41	8.44	8.35	8.28	
	Q	105°C					23.17	26.17	29.46	33.19	37.15	41.48	46.38
	P						7.20	7.45	7.61	7.79	7.74	7.55	7.37
	Q	100°C					23.79	26.88	30.28	34.11	38.19	42.66	47.71
	P						6.76	6.94	7.03	7.13	7.00	6.71	6.43
	Q	95°C				18.87	24.38	27.56	31.05	34.98	39.18	43.76	48.95
	P					5.82	6.30	6.42	6.43	6.45	6.22	5.84	5.45
	Q	90°C				19.29	24.94	28.20	31.77	35.79	40.10	44.80	
	P					5.46	5.82	5.87	5.82	5.75	5.43	4.94	
	Q	85°C			15.04	19.69	25.46	28.79	32.44	36.56	40.96		
	P				4.67	5.08	5.32	5.31	5.17	5.01	4.60		
	Q	80°C			15.31	20.06	25.95	29.34	33.07	37.27			
	P				4.37	4.69	4.81	4.72	4.51	4.26			
	Q	75°C		11.66	15.57	20.40	26.40	29.86	33.66				
	P			3.65	4.07	4.29	4.28	4.11	3.81				
	Q	70°C		11.84	15.80	20.72	26.82	30.34					
	P			3.42	3.76	3.87	3.72	3.48					
	Q	65°C	8.78	12.00	16.02	21.01	27.21						
	P		2.78	3.18	3.43	3.44	3.15						
	Q	60°C	8.88	12.14	16.22	21.28							
	P		2.60	2.94	3.10	2.99							
	Q	50°C	9.06	12.39	16.57								
	P		2.23	2.42	2.40								
	Q	40°C	9.20										
	P		1.84										
	Q	30°C	9.30										
	P		1.42										

制热量基于吸气过热5.0K, 过冷10.0K。Heating Capacity Based on SH5.0K, SC10.0K.

制热量

Heating Capacity

WH- R142b

型号 Model	项目Item (kW)	Tc\Te	0°C	10°C	20°C	30°C	40°C	45°C	50°C	55°C	60°C	65°C	70°C
WH240KB-TFD-GN1	Q	110°C						33.23	37.39	42.12	47.13	52.61	58.82
	P							10.38	10.68	11.00	11.04	10.92	10.82
	Q	105°C					30.30	34.22	38.53	43.40	48.58	54.25	60.66
	P						9.42	9.74	9.95	10.18	10.12	9.87	9.64
	Q	100°C					31.12	35.16	39.60	44.61	49.95	55.79	62.40
	P						8.84	9.08	9.20	9.32	9.15	8.78	8.41
	Q	95°C				24.68	31.89	36.05	40.61	45.75	51.24	57.24	64.02
	P					7.61	8.23	8.40	8.42	8.44	8.14	7.64	7.13
	Q	90°C				25.23	32.62	36.88	41.55	46.81	52.44	58.60	
	P					7.14	7.61	7.67	7.61	7.51	7.10	6.47	
	Q	85°C			19.67	25.75	33.30	37.65	42.43	47.81	53.57		
	P				6.11	6.65	6.96	6.94	6.76	6.55	6.02		
	Q	80°C			20.03	26.23	33.93	38.38	43.26	48.75			
	P				5.72	6.14	6.29	6.17	5.89	5.57			
	Q	75°C		15.26	20.36	26.68	34.53	39.05	44.02				
	P			4.78	5.33	5.61	5.59	5.38	4.99				
	Q	70°C		15.48	20.67	27.09	35.08	39.68					
	P			4.48	4.92	5.06	4.87	4.55					
	Q	65°C		11.48	15.69	20.95	27.48	35.58					
	P			3.63	4.16	4.49	4.50	4.12					
	Q	60°C		11.62	15.88	21.21	27.83						
	P			3.40	3.84	4.06	3.91						
	Q	50°C		11.85	16.20	21.67							
	P			2.92	3.17	3.14							
	Q	40°C		12.03									
	P			2.40									
	Q	30°C		12.17									
	P			1.86									

制热量基于吸气过热5.0K, 过冷10.0K。 Heating Capacity Based on SH5.0K, SC10.0K.

制热量

Heating Capacity

WH- R142b

型号 Model	项目Item (kW)	Tc\Te	0°C	10°C	20°C	30°C	40°C	45°C	50°C	55°C	60°C	65°C	70°C
WH280KB-TFD-GN1	Q	110°C						38.17	42.95	48.38	54.14	60.43	67.57
	P						11.92	12.27	12.64	12.69	12.54	12.43	
	Q	105°C					34.80	39.31	44.26	49.86	55.81	62.31	69.68
	P						10.82	11.19	11.43	11.70	11.62	11.34	11.07
	Q	100°C					35.75	40.39	45.49	51.25	57.38	64.09	71.67
	P						10.15	10.43	10.56	10.71	10.51	10.08	9.66
	Q	95°C				28.35	36.63	41.41	46.65	52.56	58.86	65.75	73.55
	P					8.75	9.46	9.64	9.67	9.69	9.35	8.78	8.19
	Q	90°C				28.98	37.47	42.36	47.73	53.78	60.24	67.31	
	P					8.20	8.74	8.82	8.74	8.63	8.16	7.43	
	Q	85°C			22.60	29.57	38.25	43.25	48.74	54.92	61.53		
	P				7.01	7.64	8.00	7.97	7.77	7.53	6.91		
	Q	80°C			23.00	30.13	38.98	44.09	49.69	56.00			
	P				6.57	7.05	7.22	7.09	6.77	6.39			
	Q	75°C		17.52	23.39	30.65	39.66	44.86	50.57				
	P			5.49	6.12	6.44	6.42	6.18	5.73				
	Q	70°C		17.78	23.74	31.12	40.29	45.58					
	P			5.14	5.65	5.81	5.60	5.23					
	Q	65°C		13.19	18.02	24.07	31.57	40.87					
	P			4.17	4.78	5.16	5.17	4.74					
	Q	60°C		13.35	18.24	24.37	31.97						
	P			3.91	4.42	4.66	4.49						
	Q	50°C		13.61	18.61	24.89							
	P			3.35	3.64	3.60							
	Q	40°C		13.82									
	P			2.76									
	Q	30°C		13.97									
	P			2.13									

制热量基于吸气过热5.0K, 过冷10.0K。 Heating Capacity Based on SH5.0K, SC10.0K.

制热量

Heating Capacity

WH- R142b

型号 Model	项目Item (kW)	Tc\Te	0°C	10°C	20°C	30°C	40°C	45°C	50°C	55°C	60°C	65°C	70°C
WH360KB-TFD-GN1	Q	110°C						49.79	56.03	63.11	70.62	78.83	88.14
	P							15.55	16	16.49	16.55	16.36	16.22
	Q	105°C					45.4	51.28	57.74	65.04	72.8	81.29	90.9
	P						14.11	14.6	14.91	15.26	15.16	14.79	14.44
	Q	100°C					46.63	52.69	59.34	66.85	74.85	83.6	93.5
	P						13.24	13.61	13.78	13.97	13.71	13.15	12.6
	Q	95°C				36.98	47.79	54.02	60.85	68.56	76.78	85.77	95.94
	P					11.41	12.34	12.58	12.61	12.64	12.2	11.45	10.68
	Q	90°C				37.81	48.88	55.26	62.26	70.15	78.58	87.81	
	P					10.7	11.4	11.5	11.4	11.26	10.64	9.69	
	Q	85°C			29.48	38.58	49.9	56.42	63.58	71.65	80.27		
	P				9.15	9.96	10.43	10.4	10.13	9.82	9.02		
	Q	80°C			30.01	39.31	50.85	57.51	64.82	73.05			
	P				8.57	9.2	9.42	9.25	8.83	8.34			
	Q	75°C		22.86	30.51	39.98	51.74	58.52	65.97				
	P			7.16	7.98	8.4	8.38	8.06	7.47				
	Q	70°C		23.2	30.97	40.6	52.56	59.46					
	P			6.71	7.37	7.58	7.3	6.82					
	Q	65°C	17.21	23.51	31.4	41.18	53.32						
	P		5.44	6.24	6.73	6.74	6.18						
	Q	60°C	17.41	23.79	31.79	41.7							
	P		5.1	5.76	6.08	5.86							
	Q	50°C	17.76	24.28	32.47								
	P		4.37	4.75	4.7								
	Q	40°C	18.03										
	P		3.6										
	Q	30°C	18.23										
	P		2.78										

制热量基于吸气过热5.0K, 过冷10.0K。Heating Capacity Based on SH5.0K, SC10.0K.

制热量

Heating Capacity

WH- R142b

型号 Model	项目Item (kW)	Tc\Te	0°C	10°C	20°C	30°C	40°C	45°C	50°C	55°C	60°C	65°C	70°C
WH470KB-TWD-GN1	Q	110°C						65.01	73.16	82.41	92.21	102.93	115.09
	P						20.30	20.89	21.53	21.61	21.36	21.18	
	Q	105°C					59.28	66.96	75.39	84.93	95.06	106.14	118.69
	P						18.42	19.06	19.47	19.93	19.80	19.31	18.85
	Q	100°C					60.89	68.80	77.48	87.29	97.74	109.16	122.09
	P						17.29	17.77	17.99	18.24	17.90	17.17	16.45
	Q	95°C				48.29	62.40	70.54	79.45	89.52	100.26	111.99	125.27
	P					14.90	16.11	16.43	16.47	16.50	15.93	14.95	13.95
	Q	90°C				49.37	63.82	72.16	81.30	91.60	102.61	114.66	
	P					13.97	14.89	15.02	14.89	14.70	13.89	12.65	
	Q	85°C			38.49	50.38	65.16	73.67	83.02	93.56	104.81		
	P				11.95	13.01	13.62	13.58	13.23	12.82	11.78		
	Q	80°C			39.19	51.33	66.40	75.09	84.64	95.38			
	P				11.19	12.01	12.30	12.08	11.53	10.89			
	Q	75°C		29.85	39.84	52.20	67.56	76.41	86.14				
	P			9.35	10.42	10.97	10.94	10.52	9.75				
	Q	70°C		30.29	40.44	53.01	68.63	77.64					
	P			8.76	9.62	9.90	9.53	8.91					
	Q	65°C	22.47	30.70	41.00	53.77	69.62						
	P		7.10	8.15	8.79	8.80	8.07						
	Q	60°C	22.73	31.06	41.51	54.45							
	P		6.66	7.52	7.94	7.65							
	Q	50°C	23.19	31.70	42.40								
	P		5.71	6.20	6.14								
	Q	40°C	23.54										
	P		4.70										
	Q	30°C	23.80										
	P		3.63										

制热量基于吸气过热5.0K, 过冷10.0K。Heating Capacity Based on SH5.0K, SC10.0K.

制热量

Heating Capacity

WH- R142b

型号 Model	项目Item (kW)	Tc\Te	0°C	10°C	20°C	30°C	40°C	45°C	50°C	55°C	60°C	65°C	70°C
WH600KB-TWD-GN1	Q	110°C						80.02	90.04	101.42	113.49	126.69	141.65
	P						24.99	25.71	26.50	26.60	26.29	26.07	
	Q	105°C					72.96	82.41	92.79	104.52	116.99	130.64	146.08
	P						22.68	23.46	23.96	24.52	24.36	23.77	23.21
	Q	100°C					74.94	84.68	95.36	107.43	120.29	134.35	150.26
	P						21.28	21.87	22.15	22.45	22.03	21.13	20.25
	Q	95°C				59.43	76.80	86.81	97.79	110.18	123.39	137.84	154.18
	P					18.34	19.83	20.22	20.27	20.31	19.61	18.40	17.16
	Q	90°C				60.76	78.55	88.81	100.06	112.74	126.28	141.12	
	P					17.20	18.32	18.48	18.32	18.10	17.10	15.57	
	Q	85°C			47.38	62.00	80.19	90.67	102.18	115.15	129.00		
	P				14.70	16.01	16.76	16.71	16.28	15.78	14.50		
	Q	80°C			48.23	63.17	81.72	92.42	104.17	117.40			
	P				13.77	14.79	15.14	14.87	14.19	13.40			
	Q	75°C		36.74	49.03	64.25	83.15	94.05	106.02				
	P			11.51	12.82	13.50	13.47	12.95	12.00				
	Q	70°C		37.28	49.77	65.25	84.47	95.56					
	P			10.78	11.84	12.18	11.73	10.96					
	Q	65°C		27.66	37.78	50.46	66.18	85.69					
	P			8.74	10.03	10.82	10.83	9.93					
	Q	60°C		27.98	38.23	51.09	67.01						
	P			8.20	9.26	9.77	9.42						
	Q	50°C		28.54	39.02	52.18							
	P			7.02	7.63	7.55							
	Q	40°C		28.98									
	P			5.79									
	Q	30°C		29.30									
	P			4.47									

制热量基于吸气过热5.0K, 过冷10.0K。 Heating Capacity Based on SH5.0K, SC10.0K.

制热量

Heating Capacity

WH-V R142b

型号 Model	项目Item (kW)	Tc\Te	0°C	10°C	20°C	30°C	40°C	45°C	50°C	55°C	60°C	65°C	70°C
WH70KB-TFD-GV1	Q	110°C		4.98	6.50	8.35	10.58	11.74	12.98	14.37	15.79	17.31	18.99
	P			2.28	2.67	3.02	3.35	3.45	3.51	3.59	3.57	3.49	3.43
	Q	105°C		5.03	6.58	8.44	10.71	11.89	13.15	14.54	15.99	17.52	19.22
	P			2.18	2.54	2.85	3.12	3.21	3.24	3.29	3.24	3.13	3.03
	Q	100°C	3.80	5.07	6.63	8.52	10.80	11.99	13.27	14.68	16.13	17.67	19.39
	P		1.72	2.08	2.41	2.68	2.91	2.96	2.97	2.98	2.90	2.75	2.61
	Q	95°C	3.81	5.10	6.67	8.57	10.88	12.08	13.36	14.78	16.24	17.78	19.50
	P		1.65	1.97	2.27	2.51	2.68	2.71	2.69	2.67	2.55	2.37	2.19
	Q	90°C	3.83	5.12	6.70	8.61	10.93	12.13	13.42	14.83	16.30	17.85	
	P		1.57	1.87	2.13	2.32	2.46	2.46	2.41	2.36	2.21	1.99	
	Q	85°C	3.83	5.13	6.71	8.63	10.95	12.16	13.44	14.86	16.32		
	P		1.49	1.76	1.99	2.15	2.23	2.20	2.12	2.04	1.85		
	Q	80°C	3.83	5.13	6.71	8.63	10.95	12.16	13.44	14.85			
	P		1.41	1.65	1.85	1.96	1.99	1.94	1.83	1.71			
	Q	75°C	3.82	5.11	6.70	8.62	10.94	12.13	13.41				
	P		1.33	1.55	1.70	1.77	1.76	1.67	1.53				
	Q	70°C	3.80	5.10	6.68	8.58	10.90	12.09					
	P		1.25	1.43	1.56	1.59	1.51	1.40					
	Q	65°C	3.78	5.06	6.63	8.54	10.84						
	P		1.16	1.32	1.41	1.40	1.27						
	Q	60°C	3.75	5.03	6.59	8.48							
	P		1.08	1.21	1.26	1.20							
	Q	50°C	3.76	5.04	6.60								
	P		0.92	0.98	0.97								
	Q	40°C	3.74										
	P		0.74										
	Q	30°C	3.71										
	P		0.57										

制热量基于吸气过热5.0K, 过冷10.0K。 Heating Capacity Based on SH5.0K, SC10.0K.

制热量

Heating Capacity

WH-V R142b

型号 Model	项目Item (kW)	Tc\Te	0°C	10°C	20°C	30°C	40°C	45°C	50°C	55°C	60°C	65°C	70°C
WH120KB-TFD-GV1	Q	110°C		8.32	10.86	13.94	17.67	19.61	21.68	24.00	26.37	28.91	31.71
	P			3.80	4.46	5.04	5.59	5.76	5.87	5.99	5.95	5.84	5.73
	Q	105°C		8.40	10.99	14.10	17.88	19.85	21.96	24.29	26.69	29.25	32.10
	P			3.64	4.24	4.77	5.22	5.36	5.41	5.49	5.40	5.22	5.06
	Q	100°C	6.34	8.47	11.08	14.23	18.04	20.03	22.17	24.51	26.94	29.51	32.38
	P		2.87	3.47	4.02	4.47	4.85	4.95	4.96	4.98	4.84	4.60	4.37
	Q	95°C	6.37	8.52	11.14	14.32	18.18	20.17	22.30	24.68	27.11	29.70	32.57
	P		2.75	3.29	3.79	4.19	4.47	4.53	4.49	4.46	4.26	3.97	3.66
	Q	90°C	6.39	8.55	11.20	14.38	18.25	20.26	22.41	24.77	27.21	29.81	
	P		2.61	3.12	3.56	3.88	4.11	4.10	4.03	3.94	3.68	3.32	
	Q	85°C	6.40	8.56	11.20	14.40	18.29	20.31	22.45	24.81	27.25		
	P		2.49	2.94	3.32	3.59	3.72	3.67	3.54	3.41	3.09		
	Q	80°C	6.39	8.56	11.20	14.41	18.29	20.31	22.45	24.80			
	P		2.36	2.76	3.08	3.28	3.32	3.23	3.06	2.86			
	Q	75°C	6.38	8.53	11.19	14.39	18.27	20.26	22.39				
	P		2.22	2.58	2.84	2.96	2.93	2.79	2.56				
	Q	70°C	6.35	8.51	11.15	14.33	18.21	20.19					
	P		2.08	2.39	2.60	2.65	2.53	2.34					
	Q	65°C	6.31	8.46	11.08	14.26	18.11						
	P		1.94	2.21	2.36	2.33	2.12						
	Q	60°C	6.26	8.40	11.01	14.15							
	P		1.80	2.02	2.10	2.01							
	Q	50°C	6.27	8.41	11.02								
	P		1.53	1.64	1.61								
	Q	40°C	6.24										
	P		1.24										
	Q	30°C	6.19										
	P		0.95										

制热量基于吸气过热5.0K, 过冷10.0K。Heating Capacity Based on SH5.0K, SC10.0K.

制热量

Heating Capacity

WH-V R142b

型号 Model	项目Item (kW)	Tc\Te	0°C	10°C	20°C	30°C	40°C	45°C	50°C	55°C	60°C	65°C	70°C
WH160KB-TFD-GV1	Q	110°C		10.63	13.88	17.81	22.59	25.06	27.71	30.67	33.70	36.95	40.53
	P			4.86	5.70	6.45	7.14	7.36	7.50	7.66	7.61	7.46	7.32
	Q	105°C		10.74	14.04	18.02	22.85	25.37	28.06	31.04	34.12	37.39	41.02
	P			4.65	5.42	6.09	6.67	6.85	6.92	7.02	6.91	6.68	6.46
	Q	100°C	8.10	10.82	14.16	18.19	23.06	25.60	28.33	31.33	34.43	37.72	41.38
	P		3.67	4.43	5.14	5.72	6.20	6.32	6.34	6.36	6.19	5.88	5.58
	Q	95°C	8.14	10.89	14.24	18.30	23.23	25.78	28.51	31.54	34.65	37.96	41.63
	P		3.52	4.21	4.84	5.35	5.72	5.79	5.74	5.70	5.45	5.07	4.68
	Q	90°C	8.17	10.93	14.31	18.38	23.33	25.90	28.64	31.66	34.78	38.10	
	P		3.34	3.99	4.55	4.96	5.25	5.24	5.15	5.04	4.71	4.24	
	Q	85°C	8.18	10.94	14.32	18.41	23.38	25.95	28.69	31.71	34.83		
	P		3.18	3.76	4.25	4.58	4.76	4.69	4.53	4.35	3.95		
	Q	80°C	8.17	10.94	14.32	18.42	23.38	25.95	28.69	31.70			
	P		3.01	3.53	3.94	4.19	4.25	4.13	3.91	3.66			
	Q	75°C	8.15	10.91	14.30	18.39	23.35	25.90	28.62				
	P		2.84	3.30	3.63	3.79	3.75	3.57	3.27				
	Q	70°C	8.12	10.88	14.25	18.32	23.27	25.80					
	P		2.66	3.06	3.33	3.39	3.23	2.99					
	Q	65°C	8.07	10.81	14.16	18.23	23.14						
	P		2.48	2.82	3.01	2.98	2.71						
	Q	60°C	8.00	10.73	14.07	18.09							
	P		2.30	2.58	2.69	2.57							
	Q	50°C	8.02	10.75	14.09								
	P		1.96	2.10	2.06								
	Q	40°C	7.98										
	P		1.59										
	Q	30°C	7.91										
	P		1.22										

制热量基于吸气过热5.0K, 过冷10.0K。Heating Capacity Based on SH5.0K, SC10.0K.

制热量

Heating Capacity

WH-V R142b

型号 Model	项目Item (kW)	Tc\Te	0°C	10°C	20°C	30°C	40°C	45°C	50°C	55°C	60°C	65°C	70°C
WH190KB-TFD-GV1	Q	110°C		12.50	16.32	20.95	26.56	29.47	32.58	36.06	39.63	43.45	47.66
	P			5.71	6.70	7.58	8.40	8.65	8.82	9.01	8.95	8.77	8.61
	Q	105°C		12.63	16.51	21.19	26.87	29.83	33.00	36.50	40.12	43.97	48.24
	P			5.47	6.37	7.16	7.84	8.06	8.14	8.26	8.12	7.85	7.60
	Q	100°C	9.53	12.73	16.65	21.39	27.11	30.10	33.31	36.84	40.49	44.36	48.66
	P		4.32	5.21	6.05	6.73	7.29	7.43	7.45	7.48	7.28	6.91	6.56
	Q	95°C	9.57	12.81	16.75	21.52	27.32	30.31	33.52	37.09	40.75	44.64	48.95
	P		4.14	4.95	5.69	6.29	6.73	6.81	6.75	6.70	6.41	5.96	5.51
	Q	90°C	9.61	12.85	16.83	21.61	27.44	30.46	33.68	37.23	40.90	44.80	
	P		3.93	4.69	5.35	5.83	6.17	6.16	6.06	5.93	5.54	4.99	
	Q	85°C	9.62	12.86	16.84	21.65	27.49	30.52	33.74	37.29	40.96		
	P		3.74	4.42	5.00	5.39	5.60	5.52	5.33	5.12	4.64		
	Q	80°C	9.61	12.86	16.84	21.66	27.49	30.52	33.74	37.28			
	P		3.54	4.15	4.63	4.93	5.00	4.86	4.60	4.30			
	Q	75°C	9.58	12.83	16.82	21.62	27.46	30.46	33.66				
	P		3.34	3.88	4.27	4.45	4.41	4.20	3.85				
	Q	70°C	9.55	12.79	16.76	21.54	27.36	30.34					
	P		3.13	3.60	3.91	3.99	3.80	3.52					
	Q	65°C	9.49	12.71	16.65	21.44	27.21						
	P		2.92	3.32	3.54	3.51	3.19						
	Q	60°C	9.41	12.62	16.55	21.27							
	P		2.70	3.04	3.16	3.02							
	Q	50°C	9.43	12.64	16.57								
	P		2.31	2.47	2.42								
	Q	40°C	9.38										
	P		1.87										
	Q	30°C	9.30										
	P		1.43										

制热量基于吸气过热5.0K, 过冷10.0K。Heating Capacity Based on SH5.0K, SC10.0K.

制热量

Heating Capacity

WH-V R142b

型号 Model	项目Item (kW)	Tc\Te	0°C	10°C	20°C	30°C	40°C	45°C	50°C	55°C	60°C	65°C	70°C
WH240KB-TFD-GV1	Q	110°C		16.35	21.35	27.39	34.74	38.54	42.62	47.17	51.83	56.83	62.34
	P			7.47	8.77	9.92	10.98	11.32	11.53	11.78	11.71	11.47	11.26
	Q	105°C		16.52	21.60	27.71	35.14	39.02	43.16	47.74	52.47	57.50	63.09
	P			7.15	8.34	9.37	10.26	10.54	10.64	10.80	10.62	10.27	9.94
	Q	100°C	12.46	16.64	21.78	27.97	35.46	39.37	43.57	48.18	52.95	58.01	63.64
	P		5.65	6.81	7.91	8.80	9.54	9.72	9.75	9.78	9.52	9.04	8.58
	Q	95°C	12.52	16.75	21.90	28.14	35.73	39.65	43.84	48.51	53.29	58.38	64.02
	P		5.41	6.47	7.44	8.23	8.80	8.90	8.83	8.77	8.38	7.79	7.20
	Q	90°C	12.57	16.81	22.01	28.27	35.88	39.83	44.04	48.69	53.49	58.60	
	P		5.14	6.14	7.00	7.63	8.07	8.06	7.92	7.75	7.24	6.52	
	Q	85°C	12.58	16.82	22.02	28.32	35.96	39.91	44.12	48.77	53.57		
	P		4.89	5.79	6.53	7.05	7.32	7.21	6.97	6.69	6.07		
	Q	80°C	12.57	16.82	22.02	28.33	35.96	39.91	44.12	48.76			
	P		4.63	5.43	6.06	6.45	6.53	6.35	6.01	5.63			
	Q	75°C	12.53	16.78	22.00	28.28	35.91	39.83	44.02				
	P		4.37	5.08	5.59	5.83	5.77	5.49	5.03				
	Q	70°C	12.49	16.73	21.92	28.17	35.79	39.68					
	P		4.09	4.70	5.12	5.21	4.96	4.60					
	Q	65°C	12.41	16.62	21.78	28.03	35.59						
	P		3.82	4.34	4.63	4.58	4.17						
	Q	60°C	12.31	16.50	21.64	27.82							
	P		3.54	3.97	4.14	3.95							
	Q	50°C	12.33	16.53	21.67								
	P		3.02	3.23	3.17								
	Q	40°C	12.27										
	P		2.44										
	Q	30°C	12.17										
	P		1.88										

制热量基于吸气过热5.0K, 过冷10.0K。Heating Capacity Based on SH5.0K, SC10.0K.

制热量

Heating Capacity

WH-V R142b

型号 Model	项目Item (kW)	Tc\Te	0°C	10°C	20°C	30°C	40°C	45°C	50°C	55°C	60°C	65°C	70°C
WH280KB-TFD-GV1	Q	110°C		18.78	24.52	31.47	39.91	44.27	48.95	54.18	59.54	65.28	71.61
	P			8.59	10.07	11.39	12.62	13.00	13.25	13.53	13.45	13.18	12.93
	Q	105°C		18.97	24.81	31.84	40.37	44.82	49.57	54.84	60.28	66.06	72.47
	P			8.22	9.57	10.76	11.78	12.10	12.23	12.40	12.20	11.80	11.41
	Q	100°C	14.31	19.12	25.01	32.13	40.74	45.23	50.05	55.35	60.83	66.64	73.11
	P		6.49	7.83	9.08	10.10	10.95	11.17	11.20	11.24	10.94	10.39	9.86
	Q	95°C	14.38	19.24	25.16	32.33	41.04	45.54	50.36	55.72	61.22	67.06	73.55
	P		6.22	7.44	8.55	9.45	10.10	10.23	10.14	10.07	9.63	8.95	8.27
	Q	90°C	14.43	19.31	25.28	32.47	41.22	45.76	50.59	55.93	61.45	67.31	
	P		5.90	7.05	8.04	8.76	9.28	9.26	9.10	8.91	8.32	7.49	
	Q	85°C	14.45	19.33	25.30	32.53	41.30	45.85	50.69	56.02	61.53		
	P		5.62	6.65	7.50	8.10	8.41	8.29	8.00	7.69	6.98		
	Q	80°C	14.43	19.33	25.30	32.54	41.30	45.85	50.69	56.01			
	P		5.32	6.24	6.96	7.41	7.50	7.30	6.91	6.46			
	Q	75°C	14.40	19.27	25.27	32.49	41.25	45.76	50.56				
	P		5.02	5.83	6.42	6.69	6.62	6.31	5.78				
	Q	70°C	14.34	19.22	25.17	32.36	41.11	45.58					
	P		4.70	5.40	5.88	5.99	5.70	5.28					
	Q	65°C	14.26	19.10	25.01	32.20	40.88						
	P		4.38	4.98	5.32	5.27	4.79						
	Q	60°C	14.14	18.96	24.86	31.96							
	P		4.06	4.56	4.75	4.54							
	Q	50°C	14.17	18.99	24.89								
	P		3.46	3.71	3.64								
	Q	40°C	14.10										
	P		2.81										
	Q	30°C	13.97										
	P		2.15										

制热量基于吸气过热5.0K, 过冷10.0K。Heating Capacity Based on SH5.0K, SC10.0K.

制热量

Heating Capacity

WH-V R142b

型号 Model	项目Item (kW)	Tc\Te	0°C	10°C	20°C	30°C	40°C	45°C	50°C	55°C	60°C	65°C	70°C
WH360KB-TFD-GV1	Q	110°C		24.5	31.99	41.05	52.06	57.75	63.86	70.68	77.67	85.16	93.41
	P			11.2	13.14	14.86	16.46	16.96	17.28	17.65	17.54	17.19	16.87
	Q	105°C		24.75	32.36	41.53	52.66	58.47	64.67	71.54	78.63	86.17	94.54
	P			10.72	12.49	14.04	15.37	15.79	15.95	16.18	15.92	15.39	14.89
	Q	100°C	18.67	24.94	32.63	41.92	53.14	59	65.29	72.2	79.35	86.93	95.37
	P		8.46	10.21	11.85	13.18	14.29	14.57	14.61	14.66	14.27	13.55	12.86
	Q	95°C	18.76	25.1	32.82	42.17	53.54	59.41	65.7	72.69	79.86	87.48	95.94
	P		8.11	9.7	11.15	12.33	13.18	13.34	13.23	13.14	12.56	11.68	10.79
	Q	90°C	18.83	25.19	32.98	42.36	53.77	59.69	66	72.96	80.16	87.81	
	P		7.7	9.2	10.49	11.43	12.1	12.08	11.87	11.62	10.85	9.77	
	Q	85°C	18.85	25.21	33	42.43	53.88	59.81	66.12	73.08	80.27		
	P		7.33	8.67	9.79	10.56	10.97	10.81	10.44	10.03	9.1		
	Q	80°C	18.83	25.21	33	42.45	53.88	59.81	66.12	73.06			
	P		6.94	8.14	9.08	9.66	9.79	9.52	9.01	8.43			
	Q	75°C	18.78	25.14	32.96	42.38	53.81	59.69	65.96				
	P		6.55	7.61	8.37	8.73	8.64	8.23	7.54				
	Q	70°C	18.71	25.07	32.84	42.22	53.63	59.46					
	P		6.13	7.05	7.67	7.81	7.44	6.89					
	Q	65°C	18.6	24.91	32.63	42.01	53.33						
	P		5.72	6.5	6.94	6.87	6.25						
	Q	60°C	18.44	24.73	32.43	41.69							
	P		5.3	5.95	6.2	5.92							
	Q	50°C	18.48	24.77	32.47								
	P		4.52	4.84	4.75								
	Q	40°C	18.39										
	P		3.66										
	Q	30°C	18.23										
	P		2.81										

制热量基于吸气过热5.0K, 过冷10.0K。Heating Capacity Based on SH5.0K, SC10.0K.

制热量

Heating Capacity

WH-V R142b

型号 Model	项目Item (kW)	Tc\Te	0°C	10°C	20°C	30°C	40°C	45°C	50°C	55°C	60°C	65°C	70°C
WH470KB-TWD-GV1	Q	110°C		31.99	41.77	53.60	67.98	75.41	83.38	92.29	101.42	111.20	121.97
	P			14.62	17.16	19.40	21.49	22.15	22.56	23.05	22.90	22.45	22.03
	Q	105°C		32.32	42.25	54.23	68.76	76.35	84.44	93.41	102.67	112.52	123.45
	P			14.00	16.31	18.33	20.07	20.62	20.83	21.13	20.79	20.10	19.44
	Q	100°C	24.38	32.57	42.61	54.74	69.39	77.04	85.25	94.27	103.61	113.51	124.53
	P		11.05	13.33	15.47	17.21	18.66	19.02	19.08	19.14	18.63	17.69	16.79
	Q	95°C	24.50	32.77	42.85	55.06	69.91	77.57	85.79	94.91	104.28	114.23	125.27
	P		10.59	12.67	14.56	16.10	17.21	17.42	17.28	17.16	16.40	15.25	14.09
	Q	90°C	24.59	32.89	43.06	55.31	70.21	77.94	86.18	95.27	104.67	114.66	
	P		10.05	12.01	13.70	14.92	15.80	15.77	15.50	15.17	14.17	12.76	
	Q	85°C	24.61	32.92	43.09	55.40	70.35	78.10	86.34	95.42	104.81		
	P		9.57	11.32	12.78	13.79	14.32	14.12	13.63	13.10	11.88		
	Q	80°C	24.59	32.92	43.09	55.43	70.35	78.10	86.34	95.40			
	P		9.06	10.63	11.86	12.61	12.78	12.43	11.76	11.01			
	Q	75°C	24.52	32.83	43.04	55.34	70.26	77.94	86.13				
	P		8.55	9.94	10.93	11.40	11.28	10.75	9.85				
	Q	70°C	24.43	32.74	42.88	55.13	70.03	77.64					
	P		8.00	9.21	10.02	10.20	9.71	9.00					
	Q	65°C	24.29	32.53	42.61	54.85	69.64						
	P		7.47	8.49	9.06	8.97	8.16						
	Q	60°C	24.08	32.29	42.35	54.44							
	P		6.92	7.77	8.10	7.73							
	Q	50°C	24.13	32.34	42.40								
	P		5.90	6.32	6.20								
	Q	40°C	24.01										
	P		4.78										
	Q	30°C	23.80										
	P		3.67										

制热量基于吸气过热5.0K, 过冷10.0K。 Heating Capacity Based on SH5.0K, SC10.0K.

制热量

Heating Capacity

WH-V R142b

型号 Model	项目Item (kW)	Tc\Te	0°C	10°C	20°C	30°C	40°C	45°C	50°C	55°C	60°C	65°C	70°C
WH600KB-TWD-GV1	Q	110°C		39.37	51.41	65.97	83.66	92.81	102.63	113.59	124.82	136.86	150.12
	P			18.00	21.12	23.88	26.45	27.26	27.77	28.36	28.19	27.63	27.11
	Q	105°C		39.78	52.00	66.74	84.63	93.97	103.93	114.97	126.36	138.48	151.93
	P			17.23	20.07	22.56	24.70	25.38	25.63	26.00	25.58	24.73	23.93
	Q	100°C	30.00	40.08	52.44	67.37	85.40	94.82	104.93	116.03	127.52	139.70	153.27
	P		13.60	16.41	19.04	21.18	22.97	23.42	23.48	23.56	22.93	21.78	20.67
	Q	95°C	30.15	40.34	52.74	67.77	86.04	95.48	105.58	116.82	128.34	140.59	154.18
	P		13.03	15.59	17.92	19.82	21.18	21.44	21.26	21.12	20.18	18.77	17.34
	Q	90°C	30.26	40.48	53.00	68.08	86.41	95.93	106.07	117.25	128.82	141.12	
	P		12.37	14.79	16.86	18.37	19.45	19.41	19.08	18.67	17.44	15.70	
	Q	85°C	30.29	40.51	53.03	68.19	86.59	96.12	106.26	117.44	129.00		
	P		11.78	13.93	15.73	16.97	17.63	17.37	16.78	16.12	14.62		
	Q	80°C	30.26	40.51	53.03	68.22	86.59	96.12	106.26	117.41			
	P		11.15	13.08	14.59	15.52	15.73	15.30	14.48	13.55			
	Q	75°C	30.18	40.40	52.97	68.11	86.48	95.93	106.00				
	P		10.53	12.23	13.45	14.03	13.89	13.23	12.12				
	Q	70°C	30.07	40.29	52.78	67.85	86.19	95.56					
	P		9.85	11.33	12.33	12.55	11.96	11.07					
	Q	65°C	29.89	40.03	52.44	67.51	85.71						
	P		9.19	10.45	11.15	11.04	10.04						
	Q	60°C	29.63	39.74	52.12	67.00							
	P		8.52	9.56	9.96	9.51							
	Q	50°C	29.70	39.81	52.18								
	P		7.26	7.78	7.63								
	Q	40°C	29.55										
	P		5.88										
	Q	30°C	29.30										
	P		4.52										

制热量基于吸气过热5.0K, 过冷10.0K。 Heating Capacity Based on SH5.0K, SC10.0K.

制热量

Heating Capacity

WH- R245fa

型号Model	项目Item (kW)	Tc\Te	22°C	25°C	30°C	35°C	40°C	45°C	50°C	55°C
WH70KB-TFD-GN1	Q	135°C					5.03	5.51	6.04	6.69
	P						2.90	2.93	2.94	2.94
	Q	130°C	3.06	3.39	3.95	4.53	5.07	5.60	6.21	6.95
	P		2.36	2.39	2.40	2.51	2.57	2.62	2.63	2.65
	Q	120°C	2.83	3.21	3.93	4.53	5.10	5.70	6.41	7.36
	P		1.96	1.99	2.01	2.10	2.16	2.20	2.22	2.26
	Q	110°C	2.58	3.02	3.91	4.52	5.15	5.84	6.70	7.77
	P		1.70	1.73	1.73	1.80	1.85	1.90	1.92	1.93
Q	100°C	2.37	2.88	3.95	4.58	5.28	6.09	7.13	8.42	
P		1.54	1.56	1.56	1.61	1.65	1.68	1.70	1.73	
WH120KB-TFD-GN1	Q	135°C					8.40	9.20	10.09	11.18
	P						4.84	4.89	4.91	4.92
	Q	130°C	5.11	5.66	6.60	7.57	8.46	9.35	10.37	11.61
	P		3.94	3.99	4.01	4.20	4.30	4.38	4.39	4.43
	Q	120°C	4.73	5.36	6.56	7.56	8.52	9.52	10.70	12.29
	P		3.27	3.32	3.35	3.51	3.60	3.68	3.70	3.77
	Q	110°C	4.31	5.04	6.53	7.54	8.59	9.76	11.19	12.98
	P		2.84	2.89	2.89	3.00	3.10	3.17	3.20	3.23
Q	100°C	3.96	4.80	6.60	7.65	8.82	10.18	11.90	14.06	
P		2.57	2.60	2.61	2.69	2.75	2.80	2.84	2.88	
WH160KB-TFD-GN1	Q	135°C					10.74	11.76	12.90	14.29
	P						6.18	6.24	6.27	6.28
	Q	130°C	6.53	7.24	8.44	9.67	10.82	11.95	13.26	14.84
	P		5.04	5.10	5.13	5.37	5.49	5.60	5.61	5.66
	Q	120°C	6.04	6.85	8.38	9.66	10.90	12.17	13.68	15.71
	P		4.17	4.24	4.29	4.49	4.60	4.70	4.73	4.82
	Q	110°C	5.51	6.45	8.34	9.64	10.98	12.47	14.30	16.59
	P		3.64	3.69	3.69	3.84	3.96	4.05	4.09	4.13
Q	100°C	5.06	6.14	8.44	9.78	11.27	13.01	15.21	17.97	
P		3.28	3.33	3.34	3.43	3.51	3.58	3.63	3.68	

制热量基于吸气过热5.0K, 过冷10.0K。 Heating Capacity Based on SH5.0K, SC10.0K.

制热量

Heating Capacity

WH- R245fa

型号Model	项目Item (kW)	Tc\Te	22°C	25°C	30°C	35°C	40°C	45°C	50°C	55°C
WH190KB-TFD-GN1	Q	135°C					12.63	13.83	15.17	16.80
	P						7.27	7.34	7.37	7.39
	Q	130°C	7.68	8.51	9.92	11.37	12.72	14.06	15.59	17.45
	P		5.93	6.00	6.03	6.31	6.46	6.58	6.60	6.66
	Q	120°C	7.10	8.05	9.85	11.36	12.81	14.31	16.08	18.48
	P		4.91	4.99	5.04	5.28	5.41	5.53	5.57	5.66
	Q	110°C	6.49	7.58	9.81	11.33	12.91	14.66	16.82	19.51
	P		4.28	4.34	4.34	4.51	4.65	4.77	4.81	4.85
Q	100°C	5.95	7.22	9.92	11.50	13.25	15.30	17.88	21.13	
P		3.86	3.91	3.92	4.04	4.13	4.21	4.27	4.33	
WH240KB-TFD-GN1	Q	135°C					16.52	18.08	19.84	21.98
	P						9.51	9.60	9.64	9.66
	Q	130°C	10.04	11.13	12.97	14.87	16.64	18.39	20.39	22.82
	P		7.75	7.85	7.89	8.25	8.45	8.61	8.63	8.71
	Q	120°C	9.29	10.53	12.89	14.86	16.76	18.71	21.03	24.16
	P		6.42	6.52	6.59	6.90	7.08	7.23	7.28	7.41
	Q	110°C	8.48	9.92	12.83	14.82	16.89	19.18	22.00	25.52
	P		5.59	5.68	5.68	5.90	6.09	6.23	6.29	6.35
Q	100°C	7.79	9.44	12.98	15.04	17.33	20.01	23.39	27.64	
P		5.05	5.12	5.13	5.28	5.41	5.51	5.58	5.67	
WH280KB-TFD-GN1	Q	135°C					18.97	20.77	22.79	25.24
	P						10.92	11.03	11.08	11.10
	Q	130°C	11.54	12.79	14.90	17.09	19.11	21.12	23.43	26.22
	P		8.91	9.01	9.06	9.48	9.70	9.89	9.91	10.00
	Q	120°C	10.67	12.10	14.80	17.07	19.25	21.49	24.16	27.76
	P		7.37	7.49	7.57	7.93	8.13	8.30	8.36	8.51
	Q	110°C	9.74	11.39	14.73	17.03	19.40	22.03	25.27	29.31
	P		6.42	6.52	6.52	6.78	6.99	7.16	7.23	7.29
Q	100°C	8.95	10.85	14.91	17.27	19.91	22.98	26.87	31.75	
P		5.80	5.88	5.89	6.06	6.21	6.33	6.41	6.51	

制热量基于吸气过热5.0K, 过冷10.0K。 Heating Capacity Based on SH5.0K, SC10.0K.

制热量

Heating Capacity

WH- R245fa

型号Model	项目Item (kW)	Tc\Te	22°C	25°C	30°C	35°C	40°C	45°C	50°C	55°C
WH360KB-TFD-GN1	Q	135°C					24.75	27.1	29.73	32.93
	P						14.25	14.39	14.45	14.48
	Q	130°C	15.05	16.68	19.44	22.29	24.93	27.55	30.56	34.2
	P		11.62	11.76	11.82	12.37	12.66	12.9	12.93	13.05
	Q	120°C	13.92	15.78	19.31	22.27	25.11	28.04	31.52	36.21
	P		9.62	9.77	9.88	10.34	10.61	10.83	10.91	11.1
	Q	110°C	12.71	14.86	19.22	22.21	25.31	28.74	32.96	38.24
	P		8.38	8.51	8.51	8.84	9.12	9.34	9.43	9.51
Q	100°C	11.67	14.15	19.45	22.53	25.97	29.98	35.05	41.42	
P		7.57	7.67	7.69	7.91	8.1	8.26	8.36	8.49	
WH470KB-TWD-GN1	Q	135°C					32.32	35.39	38.82	43.00
	P						18.61	18.79	18.87	18.91
	Q	130°C	19.65	21.78	25.38	29.11	32.55	35.97	39.90	44.66
	P		15.17	15.36	15.43	16.15	16.53	16.84	16.88	17.04
	Q	120°C	18.18	20.60	25.21	29.08	32.79	36.61	41.16	47.28
	P		12.56	12.76	12.90	13.50	13.85	14.14	14.25	14.49
	Q	110°C	16.60	19.40	25.10	29.00	33.05	37.53	43.04	49.93
	P		10.94	11.11	11.11	11.54	11.91	12.20	12.31	12.42
Q	100°C	15.24	18.48	25.40	29.42	33.91	39.15	45.77	54.08	
P		9.88	10.02	10.04	10.33	10.58	10.79	10.92	11.09	
WH600KB-TWD-GN1	Q	135°C					39.78	43.55	47.78	52.92
	P						22.90	23.13	23.22	23.27
	Q	130°C	24.19	26.81	31.24	35.82	40.06	44.27	49.11	54.96
	P		18.67	18.90	19.00	19.88	20.35	20.73	20.78	20.97
	Q	120°C	22.37	25.36	31.03	35.79	40.35	45.06	50.65	58.19
	P		15.46	15.70	15.88	16.62	17.05	17.40	17.53	17.84
	Q	110°C	20.43	23.88	30.89	35.69	40.67	46.19	52.97	61.45
	P		13.47	13.68	13.68	14.21	14.66	15.01	15.15	15.28
Q	100°C	18.75	22.74	31.26	36.21	41.74	48.18	56.33	66.56	
P		12.17	12.33	12.36	12.71	13.02	13.27	13.44	13.64	

制热量基于吸气过热5.0K, 过冷10.0K。 Heating Capacity Based on SH5.0K, SC10.0K.

制热量

Heating Capacity

WH-V R245fa

型号Model	项目Item (kW)	Tc\Te	22°C	25°C	30°C	35°C	40°C	45°C	50°C	55°C
WH70KB-TFD-GV1	Q	135°C					5.81	6.39	7.02	7.78
	P						3.19	3.23	3.26	3.28
	Q	130°C	3.40	3.81	4.50	5.19	5.82	6.44	7.16	8.01
	P		2.53	2.57	2.60	2.73	2.81	2.87	2.89	2.93
	Q	120°C	3.15	3.61	4.47	5.17	5.84	6.52	7.32	8.39
	P		2.07	2.11	2.15	2.26	2.33	2.39	2.42	2.47
	Q	110°C	2.85	3.37	4.43	5.12	5.83	6.62	7.57	8.76
	P		1.79	1.83	1.83	1.91	1.98	2.04	2.07	2.10
Q	100°C	2.59	3.18	4.44	5.15	5.92	6.82	7.95	9.35	
P		1.60	1.63	1.64	1.70	1.75	1.79	1.82	1.86	
WH120KB-TFD-GV1	Q	135°C					9.71	10.66	11.72	13.00
	P						5.32	5.40	5.45	5.48
	Q	130°C	5.68	6.36	7.52	8.67	9.72	10.76	11.95	13.37
	P		4.22	4.29	4.34	4.56	4.69	4.80	4.83	4.90
	Q	120°C	5.26	6.02	7.46	8.63	9.75	10.88	12.22	14.01
	P		3.46	3.53	3.59	3.78	3.89	3.99	4.04	4.12
	Q	110°C	4.77	5.64	7.39	8.55	9.74	11.05	12.64	14.62
	P		2.99	3.05	3.06	3.19	3.31	3.41	3.46	3.50
Q	100°C	4.33	5.32	7.41	8.59	9.89	11.39	13.27	15.62	
P		2.67	2.72	2.74	2.83	2.92	2.99	3.04	3.10	
WH160KB-TFD-GV1	Q	135°C					12.41	13.63	14.98	16.61
	P						6.80	6.90	6.96	7.01
	Q	130°C	7.25	8.13	9.61	11.08	12.43	13.75	15.27	17.09
	P		5.39	5.48	5.54	5.82	5.99	6.13	6.17	6.26
	Q	120°C	6.72	7.70	9.54	11.03	12.46	13.91	15.62	17.91
	P		4.43	4.51	4.59	4.83	4.97	5.10	5.16	5.27
	Q	110°C	6.09	7.20	9.45	10.93	12.45	14.12	16.16	18.69
	P		3.82	3.90	3.91	4.08	4.23	4.36	4.42	4.48
Q	100°C	5.53	6.80	9.47	10.98	12.64	14.56	16.97	19.96	
P		3.41	3.48	3.50	3.62	3.73	3.82	3.88	3.96	

制热量基于吸气过热5.0K, 过冷10.0K。 Heating Capacity Based on SH5.0K, SC10.0K.

制热量

Heating Capacity

WH-V R245fa

型号Model	项目Item (kW)	Tc\Te	22°C	25°C	30°C	35°C	40°C	45°C	50°C	55°C
WH190KB-TFD-GV1	Q	135°C					14.59	16.03	17.62	19.53
	P						8.00	8.11	8.18	8.24
	Q	130°C	8.53	9.56	11.30	13.03	14.61	16.17	17.96	20.09
	P		6.34	6.45	6.52	6.85	7.04	7.21	7.26	7.36
	Q	120°C	7.90	9.05	11.22	12.98	14.65	16.36	18.37	21.06
	P		5.20	5.31	5.39	5.67	5.85	6.00	6.07	6.20
	Q	110°C	7.16	8.47	11.11	12.85	14.64	16.60	19.00	21.98
	P		4.49	4.58	4.60	4.80	4.98	5.12	5.19	5.27
	Q	100°C	6.51	7.99	11.14	12.91	14.87	17.12	19.95	23.48
	P		4.02	4.09	4.12	4.26	4.38	4.49	4.57	4.66
WH240KB-TFD-GV1	Q	135°C					19.08	20.96	23.04	25.55
	P						10.46	10.61	10.70	10.78
	Q	130°C	11.16	12.51	14.77	17.04	19.11	21.15	23.49	26.28
	P		8.29	8.44	8.52	8.96	9.21	9.43	9.49	9.62
	Q	120°C	10.33	11.84	14.67	16.97	19.16	21.39	24.02	27.55
	P		6.81	6.94	7.05	7.42	7.65	7.84	7.93	8.11
	Q	110°C	9.37	11.08	14.53	16.81	19.15	21.72	24.85	28.74
	P		5.87	5.99	6.02	6.28	6.51	6.70	6.79	6.89
	Q	100°C	8.51	10.45	14.57	16.89	19.45	22.40	26.09	30.70
	P		5.25	5.35	5.39	5.57	5.73	5.87	5.97	6.09
WH280KB-TFD-GV1	Q	135°C					21.92	24.08	26.47	29.34
	P						12.01	12.19	12.30	12.38
	Q	130°C	12.82	14.37	16.97	19.57	21.95	24.30	26.98	30.19
	P		9.53	9.69	9.79	10.29	10.58	10.83	10.90	11.05
	Q	120°C	11.87	13.60	16.85	19.49	22.01	24.58	27.60	31.64
	P		7.82	7.97	8.10	8.52	8.78	9.01	9.11	9.31
	Q	110°C	10.76	12.73	16.69	19.31	22.00	24.94	28.55	33.02
	P		6.75	6.88	6.91	7.21	7.48	7.70	7.80	7.91
	Q	100°C	9.77	12.00	16.73	19.40	22.34	25.73	29.97	35.27
	P		6.03	6.14	6.19	6.39	6.58	6.75	6.86	7.00

制热量基于吸气过热5.0K, 过冷10.0K。 Heating Capacity Based on SH5.0K, SC10.0K.

制热量

Heating Capacity

WH-V R245fa

型号Model	项目Item (kW)	Tc\Te	22°C	25°C	30°C	35°C	40°C	45°C	50°C	55°C
WH360KB-TFD-GV1	Q	135°C					28.59	31.41	34.53	38.28
	P						15.67	15.9	16.04	16.15
	Q	130°C	16.72	18.74	22.14	25.53	28.64	31.7	35.2	39.38
	P		12.43	12.64	12.77	13.42	13.8	14.13	14.22	14.42
	Q	120°C	15.48	17.74	21.98	25.43	28.71	32.06	36	41.28
	P		10.2	10.4	10.57	11.12	11.46	11.75	11.89	12.15
	Q	110°C	14.04	16.6	21.77	25.19	28.7	32.54	37.24	43.07
	P		8.8	8.98	9.02	9.41	9.76	10.04	10.18	10.32
	Q	100°C	12.75	15.66	21.83	25.31	29.14	33.56	39.1	46.01
	P		7.87	8.01	8.07	8.34	8.59	8.8	8.95	9.13
WH470KB-TWD-GV1	Q	135°C					37.33	41.01	45.09	49.98
	P						20.46	20.76	20.94	21.09
	Q	130°C	21.83	24.47	28.91	33.34	37.40	41.39	45.96	51.42
	P		16.23	16.50	16.67	17.52	18.02	18.45	18.57	18.83
	Q	120°C	20.21	23.16	28.70	33.21	37.49	41.86	47.01	53.90
	P		13.32	13.58	13.80	14.52	14.96	15.34	15.53	15.86
	Q	110°C	18.33	21.68	28.43	32.89	37.47	42.49	48.63	56.24
	P		11.49	11.73	11.78	12.29	12.74	13.11	13.29	13.48
	Q	100°C	16.65	20.45	28.50	33.05	38.05	43.82	51.05	60.08
	P		10.28	10.46	10.54	10.89	11.22	11.49	11.69	11.92
WH600KB-TWD-GV1	Q	135°C					45.95	50.48	55.49	61.52
	P						25.18	25.55	25.78	25.95
	Q	130°C	26.87	30.12	35.58	41.03	46.03	50.94	56.57	63.29
	P		19.98	20.31	20.52	21.57	22.18	22.71	22.85	23.17
	Q	120°C	24.88	28.51	35.32	40.87	46.14	51.52	57.85	66.34
	P		16.39	16.71	16.99	17.87	18.42	18.88	19.11	19.53
	Q	110°C	22.56	26.68	34.99	40.48	46.12	52.29	59.85	69.22
	P		14.14	14.43	14.50	15.12	15.69	16.13	16.36	16.58
	Q	100°C	20.49	25.17	35.08	40.67	46.83	53.93	62.84	73.94
	P		12.65	12.87	12.97	13.40	13.80	14.14	14.38	14.67

制热量基于吸气过热5.0K, 过冷10.0K。 Heating Capacity Based on SH5.0K, SC10.0K.

制热量

Heating Capacity

WH- R1233zd

型号Model	项目Item (kW)	Tc\Te	22°C	25°C	30°C	35°C	40°C	45°C	50°C	55°C	60°C	65°C	
WH70KB-TFD-GN1	Q	155°C								6.26	7.12	8.09	
	P									3.39	3.44	3.49	
	Q	145°C						4.93	5.61	6.38	7.25	8.24	
	P							2.93	2.95	2.95	3.00	3.05	
	Q	135°C						4.43	4.85	5.32	5.89	6.70	7.63
	P							2.55	2.57	2.59	2.59	2.64	2.69
	Q	130°C	2.69	2.98	3.48	3.99	4.46	4.93	5.47	6.12	6.96	7.93	
	P		2.08	2.10	2.11	2.21	2.26	2.31	2.31	2.33	2.38	2.51	
	Q	120°C	2.49	2.82	3.45	3.98	4.49	5.02	5.64	6.48	7.37	8.38	
	P		1.72	1.75	1.77	1.85	1.90	1.94	1.95	1.99	2.02	2.06	
	Q	110°C	2.27	2.66	3.44	3.97	4.53	5.14	5.90	6.84	7.78	8.85	
	P		1.50	1.52	1.52	1.58	1.63	1.67	1.69	1.70	1.73	1.76	
Q	100°C	2.09	2.53	3.48	4.03	4.65	5.36	6.27	7.41	8.43	9.59		
P		1.35	1.37	1.38	1.41	1.45	1.48	1.50	1.52	1.54	1.57		
WH120KB-TFD-GN1	Q	155°C								10.45	11.88	13.51	
	P									5.66	5.75	5.84	
	Q	145°C						8.23	9.36	10.65	12.11	13.76	
	P							4.90	4.92	4.93	5.01	5.09	
	Q	135°C						7.39	8.10	8.88	9.84	11.19	12.73
	P							4.26	4.30	4.32	4.33	4.41	4.49
	Q	130°C	4.49	4.98	5.81	6.66	7.45	8.23	9.13	10.22	11.63	13.24	
	P		3.47	3.51	3.53	3.70	3.78	3.85	3.86	3.90	3.97	4.19	
	Q	120°C	4.16	4.72	5.77	6.65	7.50	8.38	9.42	10.82	12.30	14.00	
	P		2.88	2.92	2.95	3.09	3.17	3.24	3.26	3.32	3.38	3.44	
	Q	110°C	3.80	4.44	5.74	6.63	7.56	8.59	9.85	11.42	12.99	14.78	
	P		2.50	2.54	2.54	2.64	2.73	2.79	2.82	2.84	2.89	2.94	
Q	100°C	3.49	4.23	5.81	6.73	7.76	8.96	10.47	12.37	14.08	16.02		
P		2.26	2.29	2.30	2.36	2.42	2.47	2.50	2.54	2.58	2.62		

制热量基于吸气过热5.0K, 过冷10.0K。 Heating Capacity Based on SH5.0K, SC10.0K.

制热量

Heating Capacity

WH- R1233zd

型号Model	项目Item (kW)	Tc\Te	22°C	25°C	30°C	35°C	40°C	45°C	50°C	55°C	60°C	65°C			
WH160KB-TFD-GN1	Q	155°C									13.36	15.19	17.27		
	P										7.23	7.35	7.46		
	Q	145°C								10.52	11.97	13.61	15.47	17.59	
	P									6.26	6.29	6.30	6.40	6.50	
	Q	135°C								9.45	10.35	11.35	12.57	14.31	16.28
	P									5.44	5.49	5.52	5.53	5.63	5.74
	Q	130°C	5.74	6.37	7.42	8.51	9.52	10.52	11.67	13.06	14.87	16.92			
	P		4.44	4.49	4.51	4.73	4.83	4.92	4.94	4.98	5.08	5.35			
	Q	120°C	5.32	6.03	7.37	8.50	9.59	10.71	12.04	13.82	15.72	17.89			
	P		3.68	3.73	3.77	3.95	4.05	4.14	4.17	4.24	4.32	4.40			
	Q	110°C	4.85	5.68	7.34	8.48	9.66	10.97	12.58	14.60	16.61	18.90			
	P		3.20	3.25	3.25	3.38	3.48	3.57	3.60	3.63	3.69	3.76			
Q	100°C	4.46	5.40	7.43	8.60	9.91	11.45	13.38	15.82	17.99	20.48				
P		2.89	2.93	2.94	3.02	3.09	3.15	3.19	3.24	3.29	3.35				
WH190KB-TFD-GN1	Q	155°C									15.71	17.86	20.31		
	P										8.51	8.64	8.77		
	Q	145°C								12.37	14.07	16.00	18.20	20.69	
	P									7.36	7.40	7.41	7.53	7.64	
	Q	135°C								11.11	12.17	13.35	14.79	16.82	19.14
	P									6.40	6.46	6.49	6.50	6.62	6.75
	Q	130°C	6.76	7.49	8.73	10.01	11.19	12.37	13.72	15.36	17.48	19.89			
	P		5.22	5.28	5.31	5.56	5.68	5.79	5.81	5.86	5.97	6.30			
	Q	120°C	6.25	7.09	8.67	10.00	11.28	12.59	14.15	16.26	18.49	21.04			
	P		4.32	4.39	4.43	4.64	4.77	4.86	4.90	4.99	5.08	5.17			
	Q	110°C	5.70	6.67	8.63	9.97	11.36	12.90	14.80	17.17	19.53	22.22			
	P		3.76	3.82	3.82	3.97	4.10	4.19	4.24	4.27	4.34	4.42			
Q	100°C	5.24	6.35	8.74	10.12	11.66	13.46	15.74	18.60	21.16	24.08				
P		3.40	3.44	3.45	3.55	3.64	3.71	3.76	3.81	3.87	3.93				

制热量基于吸气过热5.0K, 过冷10.0K。 Heating Capacity Based on SH5.0K, SC10.0K.

制热量

Heating Capacity

WH- R1233zd

型号Model	项目Item (kW)	Tc\Te	22°C	25°C	30°C	35°C	40°C	45°C	50°C	55°C	60°C	65°C	
WH240KB-TFD-GN1	Q	155°C								20.54	23.36	26.56	
	P									11.12	11.30	11.47	
	Q	145°C						16.18	18.41	20.93	23.80	27.05	
	P							9.63	9.68	9.69	9.84	10.00	
	Q	135°C						14.53	15.92	17.46	19.34	22.00	25.03
	P							8.37	8.45	8.49	8.50	8.66	8.83
	Q	130°C	8.84	9.80	11.42	13.09	14.64	16.18	17.94	20.09	22.86	26.02	
	P		6.83	6.91	6.94	7.27	7.43	7.57	7.59	7.66	7.81	8.23	
	Q	120°C	8.17	9.27	11.34	13.08	14.75	16.47	18.51	21.26	24.18	27.51	
	P		5.65	5.74	5.80	6.07	6.23	6.36	6.41	6.52	6.64	6.76	
	Q	110°C	7.46	8.73	11.28	13.04	14.86	16.88	19.35	22.46	25.54	29.06	
	P		4.92	5.00	5.00	5.19	5.36	5.49	5.54	5.59	5.68	5.78	
	Q	100°C	6.85	8.31	11.42	13.23	15.25	17.60	20.58	24.32	27.67	31.49	
	P		4.44	4.50	4.52	4.64	4.76	4.85	4.91	4.99	5.07	5.15	
WH280KB-TFD-GN1	Q	155°C								23.60	26.83	30.51	
	P									12.78	12.98	13.18	
	Q	145°C						18.59	21.14	24.04	27.34	31.08	
	P							11.06	11.12	11.13	11.31	11.48	
	Q	135°C						16.70	18.28	20.05	22.22	25.27	28.75
	P							9.61	9.70	9.75	9.77	9.95	10.14
	Q	130°C	10.15	11.25	13.12	15.04	16.82	18.58	20.61	23.07	26.26	29.89	
	P		7.84	7.93	7.97	8.35	8.54	8.70	8.72	8.80	8.97	9.46	
	Q	120°C	9.39	10.65	13.02	15.02	16.94	18.92	21.26	24.42	27.78	31.61	
	P		6.49	6.59	6.66	6.98	7.16	7.31	7.36	7.49	7.63	7.77	
	Q	110°C	8.57	10.03	12.96	14.98	17.07	19.39	22.23	25.80	29.34	33.38	
	P		5.65	5.74	5.74	5.96	6.16	6.30	6.36	6.42	6.52	6.64	
	Q	100°C	7.87	9.54	13.12	15.20	17.52	20.22	23.64	27.94	31.79	36.17	
	P		5.11	5.17	5.19	5.34	5.47	5.57	5.64	5.73	5.82	5.91	

制热量基于吸气过热5.0K, 过冷10.0K。 Heating Capacity Based on SH5.0K, SC10.0K.

制热量

Heating Capacity

WH- R1233zd

型号Model	项目Item (kW)	Tc\Te	22°C	25°C	30°C	35°C	40°C	45°C	50°C	55°C	60°C	65°C					
WH360KB-TFD-GN1	Q	155°C										30.78	35.00	39.80			
	P											16.67	16.93	17.19			
	Q	145°C									24.25	27.58	31.36	35.66	40.54		
	P										14.43	14.50	14.52	14.75	14.98		
	Q	135°C									21.78	23.85	26.16	28.98	32.97	37.51	
	P										12.54	12.66	12.72	12.74	12.98	13.23	
	Q	130°C	13.24	14.68	17.11	19.62	21.94	24.24	26.89	30.10	34.26	38.99					
	P		10.23	10.35	10.40	10.89	11.14	11.35	11.38	11.48	11.70	12.34					
	Q	120°C	12.25	13.89	16.99	19.60	22.10	24.68	27.74	31.86	36.24	41.23					
	P		8.47	8.60	8.69	9.10	9.34	9.53	9.60	9.77	9.95	10.13					
	Q	110°C	11.18	13.08	16.91	19.54	22.27	25.29	29.00	33.65	38.27	43.55					
	P		7.37	7.49	7.49	7.78	8.03	8.22	8.30	8.37	8.51	8.66					
	Q	100°C	10.27	12.45	17.12	19.83	22.85	26.38	30.84	36.45	41.47	47.19					
	P		6.66	6.75	6.77	6.96	7.13	7.27	7.36	7.47	7.59	7.71					
WH470KB-TWD-GN1	Q	155°C											40.19	45.70	51.97		
	P												21.77	22.11	22.45		
	Q	145°C										31.66	36.01	40.95	46.56	52.93	
	P											18.84	18.93	18.96	19.26	19.56	
	Q	135°C										28.44	31.14	34.16	37.84	43.05	48.98
	P											16.37	16.53	16.61	16.64	16.95	17.28
	Q	130°C	17.29	19.17	22.34	25.62	28.65	31.65	35.11	39.30	44.73	50.91					
	P		13.36	13.51	13.58	14.22	14.55	14.82	14.86	14.99	15.28	16.11					
	Q	120°C	16.00	18.14	22.18	25.59	28.86	32.23	36.22	41.60	47.32	53.84					
	P		11.06	11.23	11.35	11.88	12.20	12.44	12.54	12.76	12.99	13.23					
	Q	110°C	14.60	17.08	22.08	25.51	29.08	33.02	37.87	43.94	49.97	56.87					
	P		9.62	9.78	9.78	10.16	10.49	10.73	10.84	10.93	11.11	11.31					
	Q	100°C	13.41	16.26	22.35	25.89	29.84	34.45	40.27	47.59	54.15	61.62					
	P		8.70	8.81	8.84	9.09	9.31	9.49	9.61	9.75	9.91	10.07					

制热量基于吸气过热5.0K, 过冷10.0K。 Heating Capacity Based on SH5.0K, SC10.0K.

制热量

Heating Capacity

WH- R1233zd

型号Model	项目Item (kW)	Tc\Te	22°C	25°C	30°C	35°C	40°C	45°C	50°C	55°C	60°C	65°C
WH600KB-TWD-GN1	Q	155°C								49.47	56.25	63.96
	P									26.79	27.21	27.63
	Q	145°C						38.97	44.32	50.40	57.31	65.15
	P							23.19	23.30	23.33	23.70	24.07
	Q	135°C					35.00	38.33	42.04	46.57	52.99	60.28
	P						20.15	20.35	20.44	20.47	20.86	21.26
	Q	130°C	21.28	23.59	27.50	31.53	35.26	38.96	43.21	48.37	55.06	62.66
	P		16.44	16.63	16.71	17.50	17.90	18.24	18.29	18.45	18.80	19.83
	Q	120°C	19.69	22.32	27.30	31.50	35.52	39.66	44.58	51.20	58.24	66.26
	P		13.61	13.82	13.97	14.62	15.01	15.32	15.43	15.70	15.99	16.28
	Q	110°C	17.97	21.02	27.18	31.40	35.79	40.64	46.61	54.08	61.50	69.99
	P		11.84	12.04	12.04	12.50	12.90	13.21	13.34	13.45	13.68	13.92
	Q	100°C	16.50	20.01	27.51	31.87	36.72	42.39	49.56	58.58	66.65	75.84
	P		10.70	10.85	10.88	11.19	11.46	11.68	11.83	12.00	12.20	12.39

制热量基于吸气过热5.0K, 过冷10.0K。Heating Capacity Based on SH5.0K, SC10.0K.

制热量

Heating Capacity

WH-V R1233zd

型号Model	项目Item (kW)	Tc\Te	22°C	25°C	30°C	35°C	40°C	45°C	50°C	55°C	60°C	65°C		
WH70KB-TFD-GV1	Q	155°C									7.35	8.38	9.55	
	P										3.82	3.90	3.97	
	Q	145°C						5.74	6.55	7.46	8.51	9.70		
	P							3.27	3.30	3.32	3.39	3.46		
	Q	135°C					5.11	5.62	6.18	6.85	7.81	8.90		
	P						2.80	2.84	2.87	2.89	2.95	3.00		
	Q	130°C	2.99	3.35	3.96	4.57	5.12	5.67	6.30	7.04	8.03	9.15		
	P		2.22	2.26	2.29	2.40	2.47	2.53	2.54	2.58	2.63	2.68		
	Q	120°C	2.77	3.17	3.93	4.55	5.14	5.73	6.44	7.39	8.42	9.60		
	P		1.83	1.86	1.89	1.99	2.05	2.10	2.13	2.17	2.22	2.26		
	Q	110°C	2.51	2.97	3.90	4.51	5.14	5.82	6.66	7.70	8.78	10.01		
	P		1.57	1.61	1.61	1.68	1.75	1.80	1.82	1.85	1.88	1.92		
	Q	100°C	2.28	2.80	3.91	4.53	5.21	6.00	7.00	8.23	9.38	10.70		
	P		1.41	1.43	1.44	1.49	1.54	1.57	1.60	1.63	1.66	1.70		
	WH120KB-TFD-GV1	Q	155°C									12.28	14.00	15.96
		P										6.38	6.51	6.64
Q		145°C						9.59	10.94	12.47	14.21	16.20		
P								5.46	5.51	5.55	5.66	5.77		
Q		135°C					8.54	9.38	10.32	11.44	13.04	14.86		
P							4.68	4.75	4.79	4.82	4.92	5.02		
Q		130°C	4.99	5.60	6.61	7.63	8.56	9.47	10.52	11.76	13.41	15.29		
P			3.71	3.78	3.82	4.01	4.12	4.22	4.25	4.31	4.39	4.48		
Q		120°C	4.62	5.30	6.57	7.60	8.58	9.58	10.76	12.33	14.06	16.03		
P			3.05	3.11	3.16	3.32	3.42	3.51	3.55	3.63	3.70	3.78		
Q		110°C	4.20	4.96	6.50	7.53	8.58	9.72	11.13	12.87	14.67	16.72		
P			2.63	2.68	2.70	2.81	2.92	3.00	3.04	3.08	3.14	3.21		
Q		100°C	3.81	4.68	6.52	7.56	8.70	10.03	11.68	13.75	15.67	17.86		
P			2.35	2.39	2.41	2.49	2.57	2.63	2.68	2.73	2.78	2.83		

制热量基于吸气过热5.0K, 过冷10.0K。Heating Capacity Based on SH5.0K, SC10.0K.

WH-V R1233zd

型号Model	项目Item (kW)	Tc\Te	22°C	25°C	30°C	35°C	40°C	45°C	50°C	55°C	60°C	65°C
WH160KB-TFD-GV1	Q	155°C								15.69	17.89	20.39
	P									8.15	8.32	8.48
	Q	145°C						12.26	13.98	15.93	18.16	20.71
	P							6.98	7.05	7.09	7.23	7.38
	Q	135°C					10.92	11.99	13.19	14.62	16.67	19.00
	P						5.98	6.07	6.13	6.17	6.29	6.41
	Q	130°C	6.38	7.16	8.45	9.75	10.93	12.11	13.44	15.03	17.14	19.54
	P		4.75	4.83	4.88	5.12	5.27	5.39	5.43	5.51	5.61	5.73
	Q	120°C	5.91	6.77	8.39	9.71	10.96	12.24	13.75	15.76	17.97	20.48
	P		3.90	3.97	4.04	4.25	4.37	4.49	4.54	4.64	4.73	4.83
	Q	110°C	5.36	6.34	8.31	9.62	10.96	12.43	14.22	16.45	18.75	21.37
	P		3.36	3.43	3.45	3.59	3.73	3.84	3.89	3.94	4.02	4.10
Q	100°C	4.87	5.98	8.34	9.66	11.13	12.81	14.93	17.57	20.03	22.83	
P		3.01	3.06	3.08	3.18	3.28	3.36	3.42	3.48	3.55	3.62	
WH190KB-TFD-GV1	Q	155°C								18.46	21.04	23.98
	P									9.59	9.78	9.98
	Q	145°C						14.41	16.43	18.74	21.36	24.35
	P							8.21	8.29	8.34	8.51	8.67
	Q	135°C					12.84	14.10	15.51	17.19	19.60	22.34
	P						7.04	7.14	7.20	7.25	7.39	7.54
	Q	130°C	7.51	8.41	9.94	11.47	12.86	14.24	15.81	17.68	20.15	22.98
	P		5.58	5.67	5.74	6.03	6.19	6.34	6.38	6.48	6.60	6.74
	Q	120°C	6.95	7.96	9.87	11.42	12.89	14.39	16.16	18.54	21.13	24.09
	P		4.58	4.67	4.75	5.00	5.14	5.28	5.34	5.45	5.56	5.67
	Q	110°C	6.31	7.45	9.78	11.31	12.89	14.61	16.72	19.34	22.05	25.13
	P		3.95	4.03	4.05	4.22	4.38	4.51	4.57	4.63	4.72	4.82
Q	100°C	5.72	7.03	9.80	11.36	13.08	15.07	17.56	20.66	23.55	26.85	
P		3.54	3.60	3.62	3.75	3.86	3.95	4.02	4.10	4.18	4.26	

制热量基于吸气过热5.0K, 过冷10.0K。Heating Capacity Based on SH5.0K, SC10.0K.

WH-V R1233zd

型号Model	项目Item (kW)	Tc\Te	22°C	25°C	30°C	35°C	40°C	45°C	50°C	55°C	60°C	65°C	
WH240KB-TFD-GV1	Q	155°C									24.14	27.51	31.36
	P										12.54	12.79	13.05
	Q	145°C						18.85	21.49	24.50	27.93	31.85	
	P							10.74	10.84	10.90	11.12	11.34	
	Q	135°C					16.79	18.45	20.28	22.48	25.63	29.22	
	P						9.20	9.34	9.42	9.48	9.67	9.86	
	Q	130°C	9.82	11.00	13.00	15.00	16.82	18.62	20.67	23.12	26.36	30.05	
	P		7.30	7.42	7.50	7.88	8.10	8.29	8.35	8.47	8.64	8.81	
	Q	120°C	9.09	10.42	12.91	14.93	16.86	18.83	21.14	24.24	27.64	31.50	
	P		5.99	6.11	6.21	6.53	6.73	6.90	6.98	7.13	7.27	7.42	
	Q	110°C	8.25	9.75	12.79	14.79	16.86	19.11	21.87	25.29	28.84	32.87	
	P		5.17	5.27	5.30	5.53	5.73	5.90	5.98	6.06	6.18	6.31	
Q	100°C	7.49	9.20	12.82	14.86	17.11	19.71	22.96	27.02	30.80	35.12		
P		4.62	4.70	4.74	4.90	5.05	5.17	5.26	5.36	5.47	5.57		
WH280KB-TFD-GV1	Q	155°C									27.73	31.61	36.03
	P										14.40	14.70	14.99
	Q	145°C						21.66	24.69	28.15	32.09	36.58	
	P							12.33	12.45	12.53	12.78	13.03	
	Q	135°C					19.29	21.19	23.30	25.83	29.44	33.56	
	P						10.57	10.72	10.82	10.89	11.11	11.33	
	Q	130°C	11.28	12.64	14.93	17.22	19.32	21.39	23.75	26.56	30.28	34.52	
	P		8.39	8.52	8.62	9.05	9.31	9.53	9.59	9.73	9.92	10.12	
	Q	120°C	10.44	11.97	14.83	17.16	19.36	21.63	24.29	27.85	31.75	36.19	
	P		6.88	7.01	7.13	7.50	7.73	7.93	8.02	8.19	8.36	8.52	
	Q	110°C	9.47	11.20	14.69	16.99	19.36	21.95	25.12	29.05	33.12	37.75	
	P		5.93	6.06	6.09	6.35	6.58	6.78	6.87	6.96	7.10	7.24	
Q	100°C	8.60	10.56	14.73	17.07	19.65	22.64	26.38	31.04	35.39	40.34		
P		5.31	5.40	5.44	5.63	5.80	5.93	6.04	6.16	6.28	6.40		

制热量基于吸气过热5.0K, 过冷10.0K。Heating Capacity Based on SH5.0K, SC10.0K.

制热量

Heating Capacity

WH-V R1233zd

型号Model	项目Item (kW)	Tc\Te	22°C	25°C	30°C	35°C	40°C	45°C	50°C	55°C	60°C	65°C	
WH360KB-TFD-GV1	Q	155°C								36.17	41.23	47.00	
	P									18.79	19.17	19.55	
	Q	145°C						28.25	32.21	36.72	41.86	47.72	
	P							16.09	16.24	16.34	16.67	17.00	
	Q	135°C					25.16	27.64	30.39	33.69	38.41	43.78	
	P						13.79	13.99	14.12	14.21	14.49	14.78	
	Q	130°C	14.71	16.49	19.48	22.47	25.20	27.90	30.98	34.65	39.50	45.03	
	P		10.94	11.12	11.24	11.81	12.14	12.43	12.51	12.69	12.94	13.20	
	Q	120°C	13.62	15.61	19.34	22.38	25.26	28.21	31.68	36.33	41.42	47.21	
	P		8.98	9.15	9.30	9.79	10.08	10.34	10.46	10.69	10.90	11.12	
	Q	110°C	12.36	14.61	19.16	22.17	25.26	28.64	32.77	37.90	43.21	49.25	
	P		7.74	7.90	7.94	8.28	8.59	8.84	8.96	9.08	9.26	9.45	
	Q	100°C	11.22	13.78	19.21	22.27	25.64	29.53	34.41	40.49	46.16	52.62	
	P		6.93	7.05	7.10	7.34	7.56	7.74	7.88	8.03	8.19	8.35	
	WH470KB-TWD-GV1	Q	155°C								47.23	53.84	61.37
		P									24.53	25.03	25.53
Q		145°C						36.89	42.06	47.95	54.66	62.31	
P								21.01	21.21	21.34	21.77	22.20	
Q		135°C					32.85	36.09	39.68	43.99	50.15	57.17	
P							18.01	18.27	18.44	18.55	18.92	19.30	
Q		130°C	19.21	21.53	25.44	29.34	32.90	36.43	40.45	45.24	51.58	58.80	
P			14.28	14.52	14.68	15.42	15.85	16.23	16.33	16.57	16.90	17.24	
Q		120°C	17.78	20.38	25.25	29.22	32.98	36.84	41.37	47.44	54.08	61.64	
P			11.73	11.95	12.14	12.78	13.16	13.50	13.66	13.96	14.23	14.52	
Q		110°C	16.14	19.08	25.02	28.95	32.98	37.40	42.79	49.49	56.42	64.31	
P			10.11	10.32	10.37	10.81	11.22	11.54	11.70	11.86	12.09	12.34	
Q		100°C	14.65	17.99	25.08	29.08	33.48	38.56	44.93	52.87	60.27	68.71	
P			9.05	9.21	9.27	9.58	9.87	10.11	10.29	10.49	10.69	10.90	

制热量基于吸气过热5.0K, 过冷10.0K。 Heating Capacity Based on SH5.0K, SC10.0K.

制热量

Heating Capacity

WH-V R1233zd

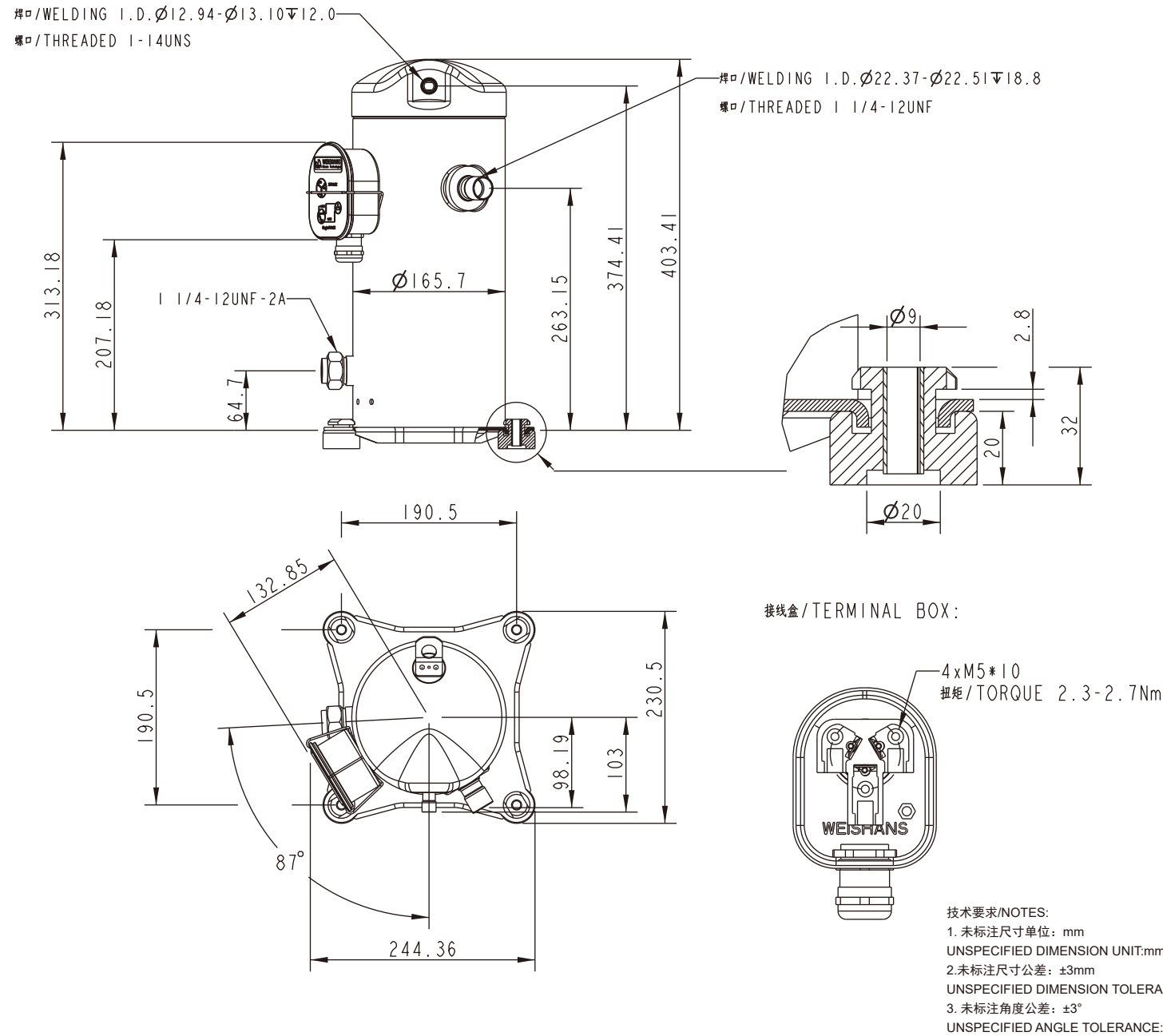
型号Model	项目Item (kW)	Tc\Te	22°C	25°C	30°C	35°C	40°C	45°C	50°C	55°C	60°C	65°C	
WH600KB-TWD-GV1	Q	155°C									58.13	66.26	75.53
	P										30.20	30.81	31.42
	Q	145°C						45.40	51.76	59.01	67.27	76.69	
	P							25.86	26.10	26.26	26.79	27.32	
	Q	135°C					40.43	44.42	48.84	54.14	61.73	70.36	
	P						22.16	22.48	22.69	22.84	23.29	23.75	
	Q	130°C	23.64	26.50	31.31	36.11	40.50	44.84	49.79	55.69	63.48	72.37	
	P		17.58	17.87	18.06	18.98	19.51	19.98	20.10	20.39	20.80	21.21	
	Q	120°C	21.89	25.09	31.08	35.97	40.59	45.34	50.91	58.38	66.56	75.87	
	P		14.43	14.70	14.95	15.73	16.20	16.62	16.81	17.18	17.52	17.87	
	Q	110°C	19.86	23.48	30.79	35.63	40.59	46.03	52.66	60.91	69.44	79.15	
	P		12.44	12.70	12.76	13.31	13.80	14.21	14.40	14.59	14.88	15.19	
	Q	100°C	18.03	22.15	30.87	35.79	41.21	47.46	55.30	65.07	74.18	84.56	
	P		11.14	11.33	11.41	11.80	12.15	12.44	12.66	12.90	13.16	13.42	

制热量基于吸气过热5.0K, 过冷10.0K。 Heating Capacity Based on SH5.0K, SC10.0K.

外形尺寸

Dimension

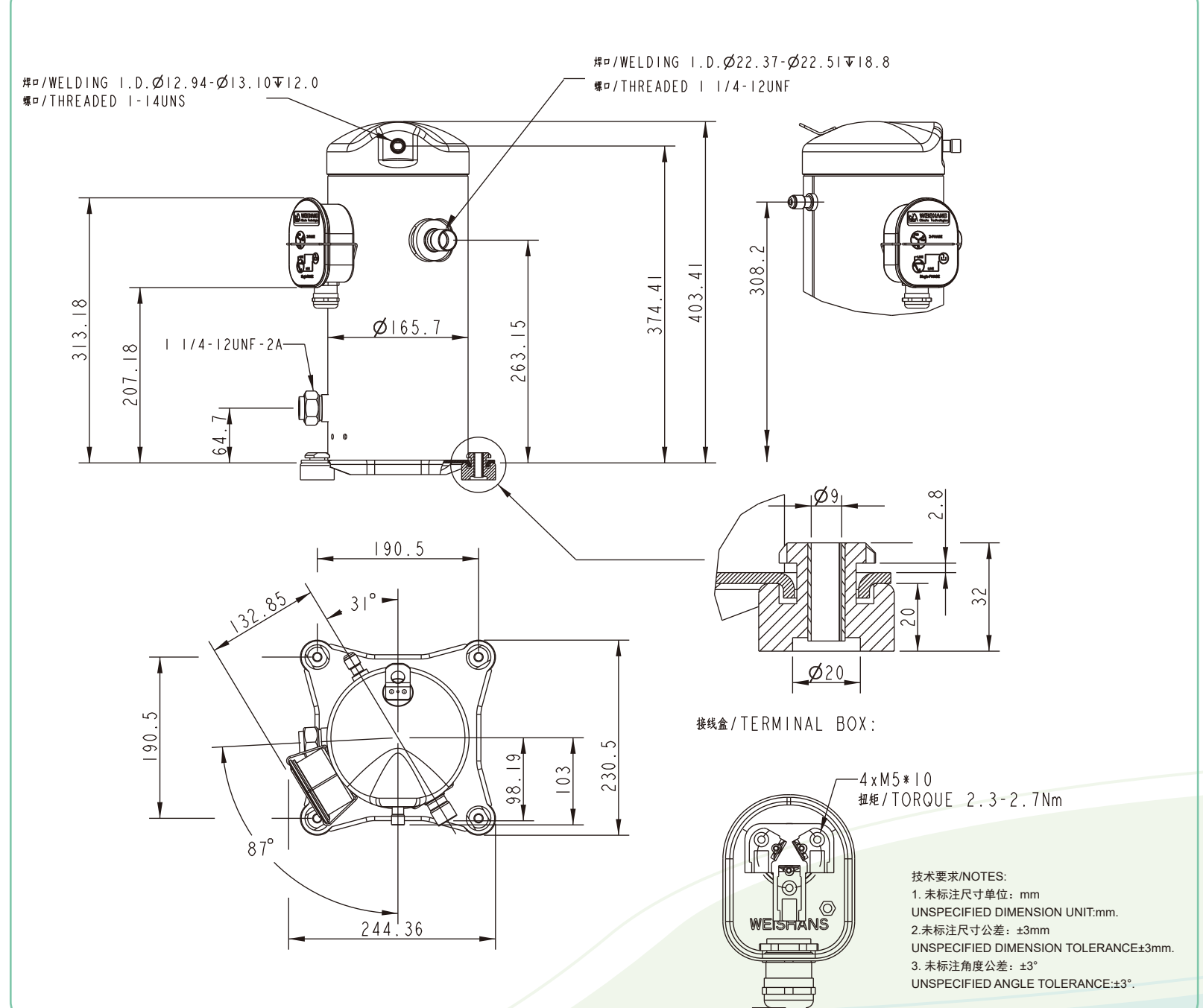
WH70



外形尺寸

Dimension

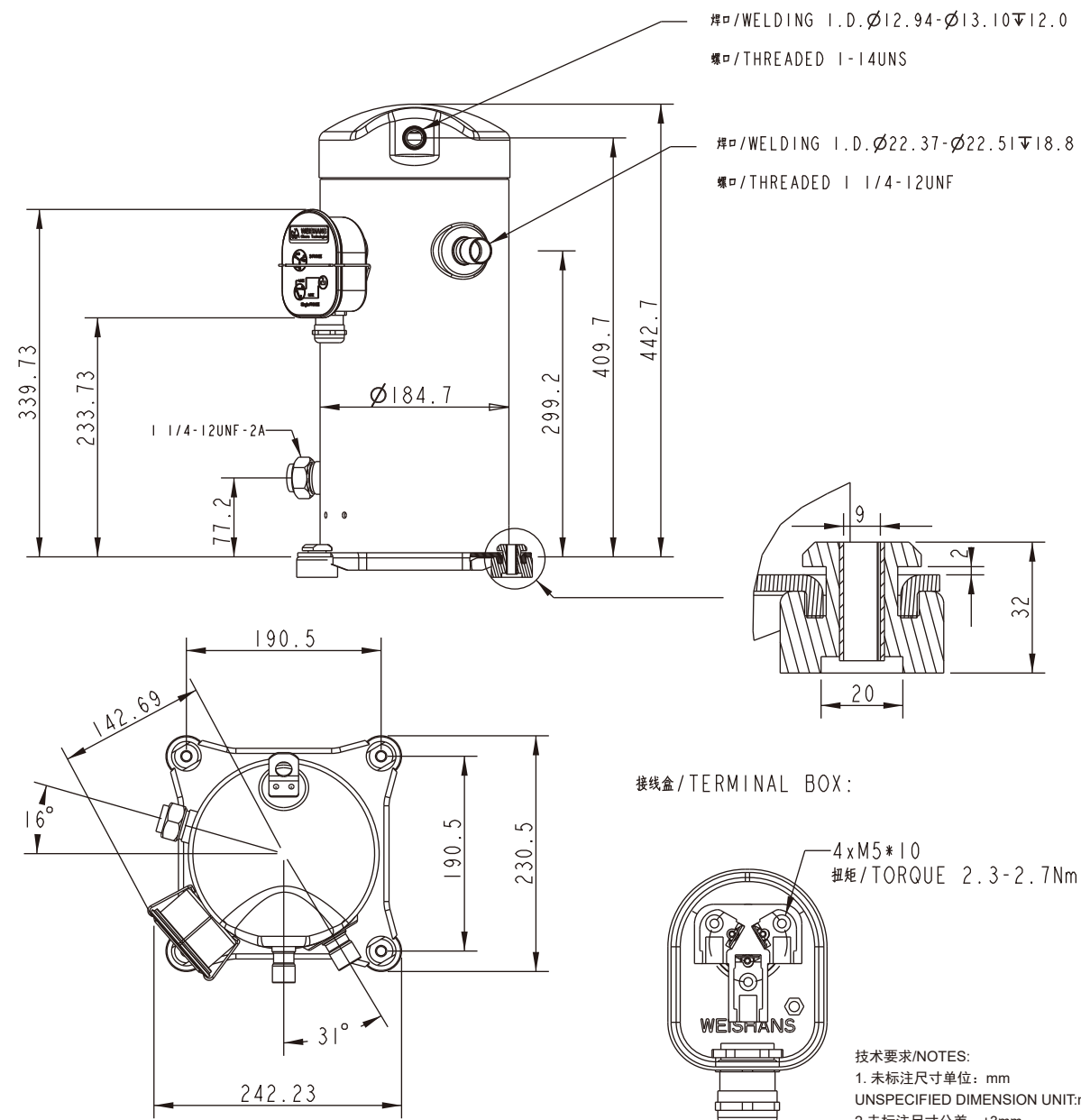
WH70-EVI



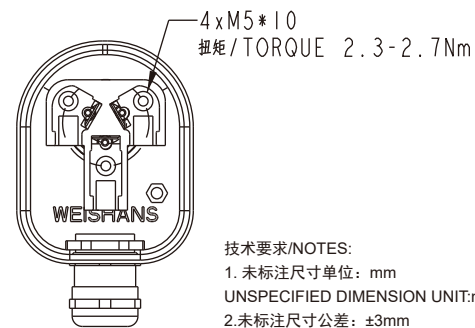
外形尺寸

Dimension

WH120-WH160



接线盒/Terminal BOX:

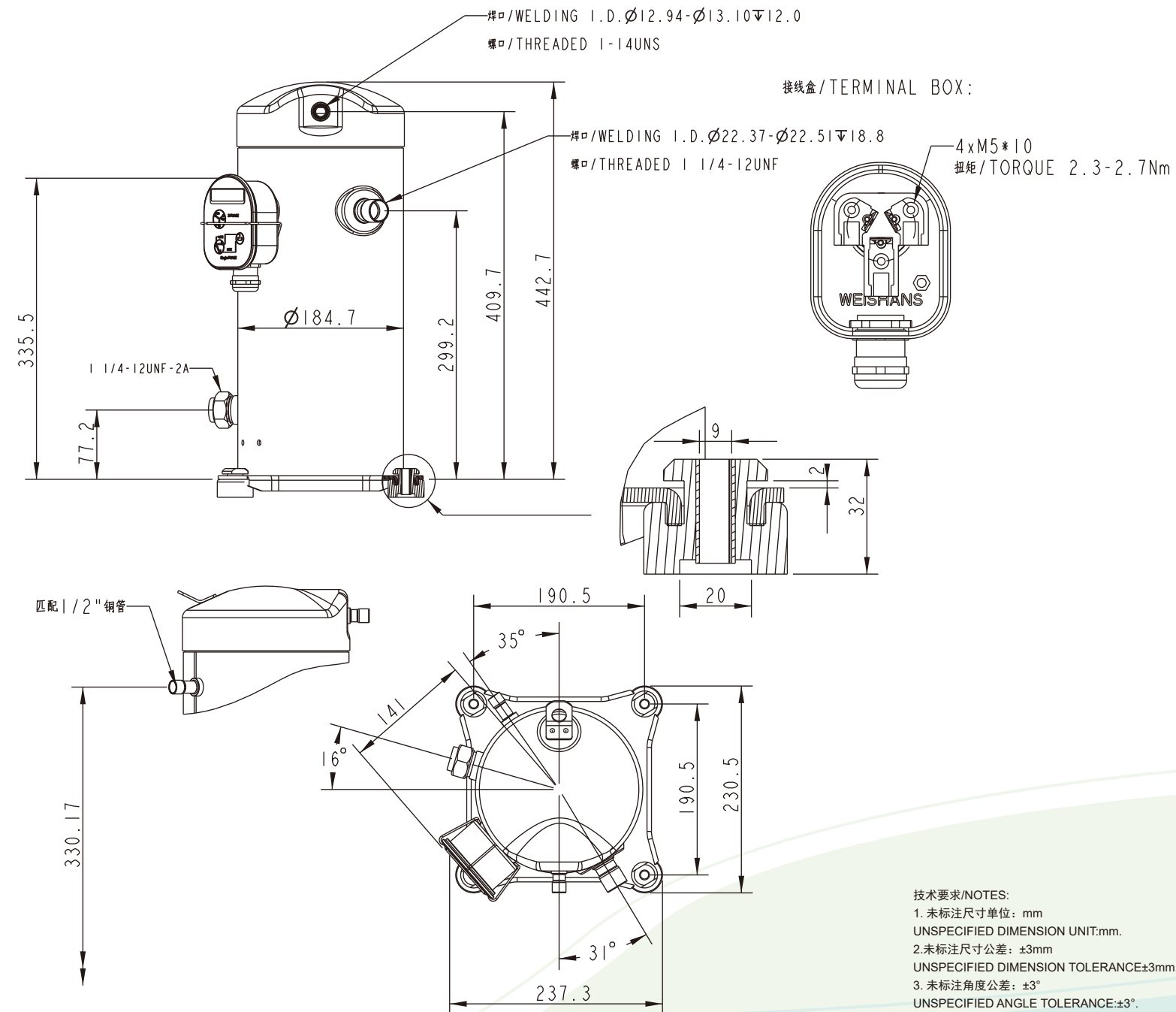


技术要求/NOTES:
 1. 未标注尺寸单位: mm
 UNSPECIFIED DIMENSION UNIT:mm.
 2. 未标注尺寸公差: ± 3 mm
 UNSPECIFIED DIMENSION TOLERANCE ± 3 mm.
 3. 未标注角度公差: $\pm 3^\circ$
 UNSPECIFIED ANGLE TOLERANCE: $\pm 3^\circ$.

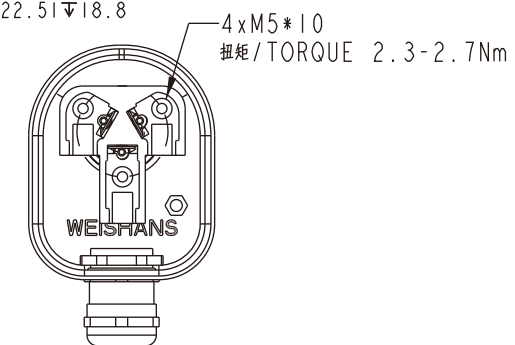
外形尺寸

Dimension

WH120-WH160-EVI



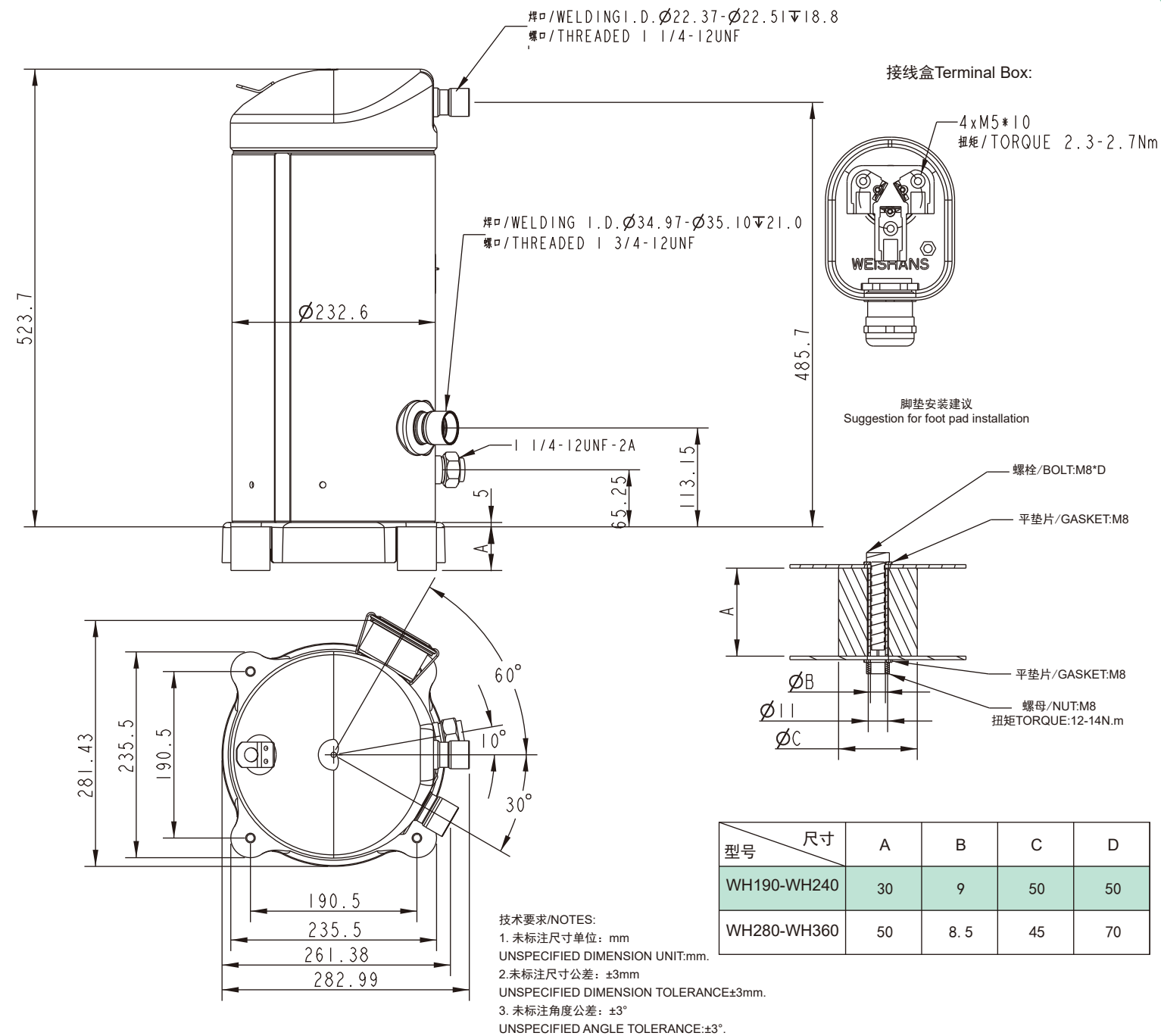
接线盒/Terminal BOX:



技术要求/NOTES:
 1. 未标注尺寸单位: mm
 UNSPECIFIED DIMENSION UNIT:mm.
 2. 未标注尺寸公差: ± 3 mm
 UNSPECIFIED DIMENSION TOLERANCE ± 3 mm.
 3. 未标注角度公差: $\pm 3^\circ$
 UNSPECIFIED ANGLE TOLERANCE: $\pm 3^\circ$.

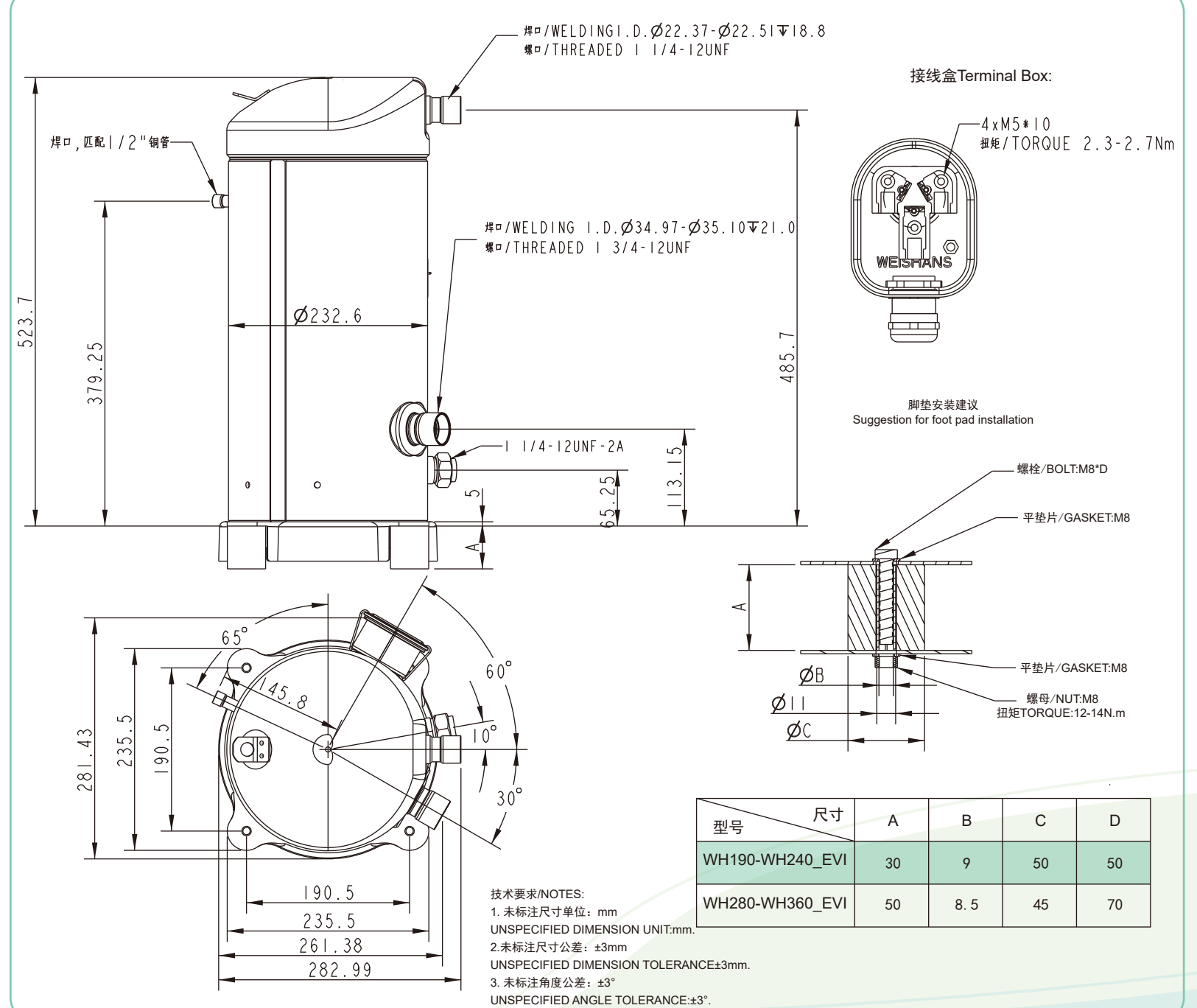
外形尺寸 Dimension

WH190-WH360



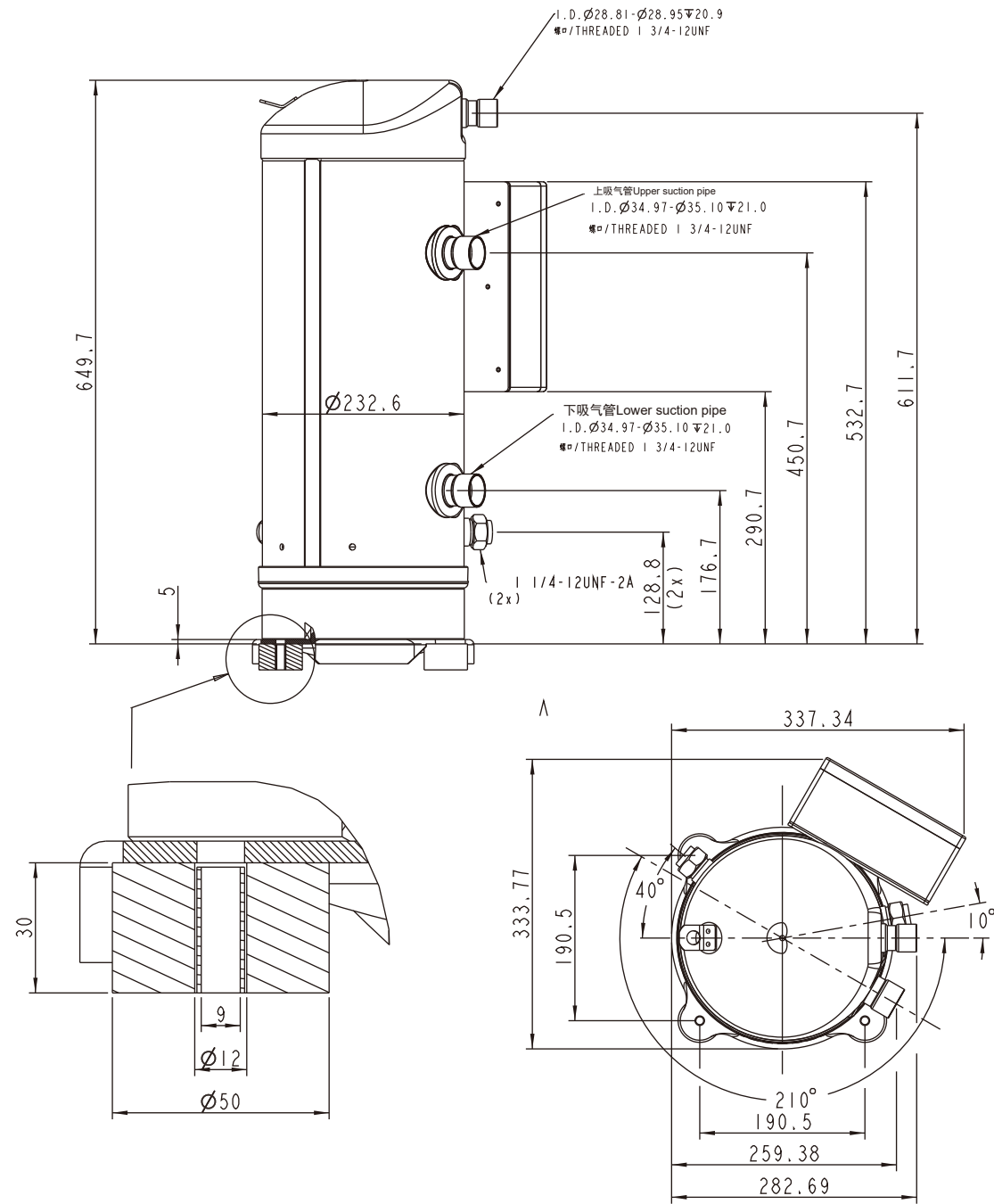
外形尺寸 Dimension

WH190-WH360-EVI



外形尺寸 Dimension

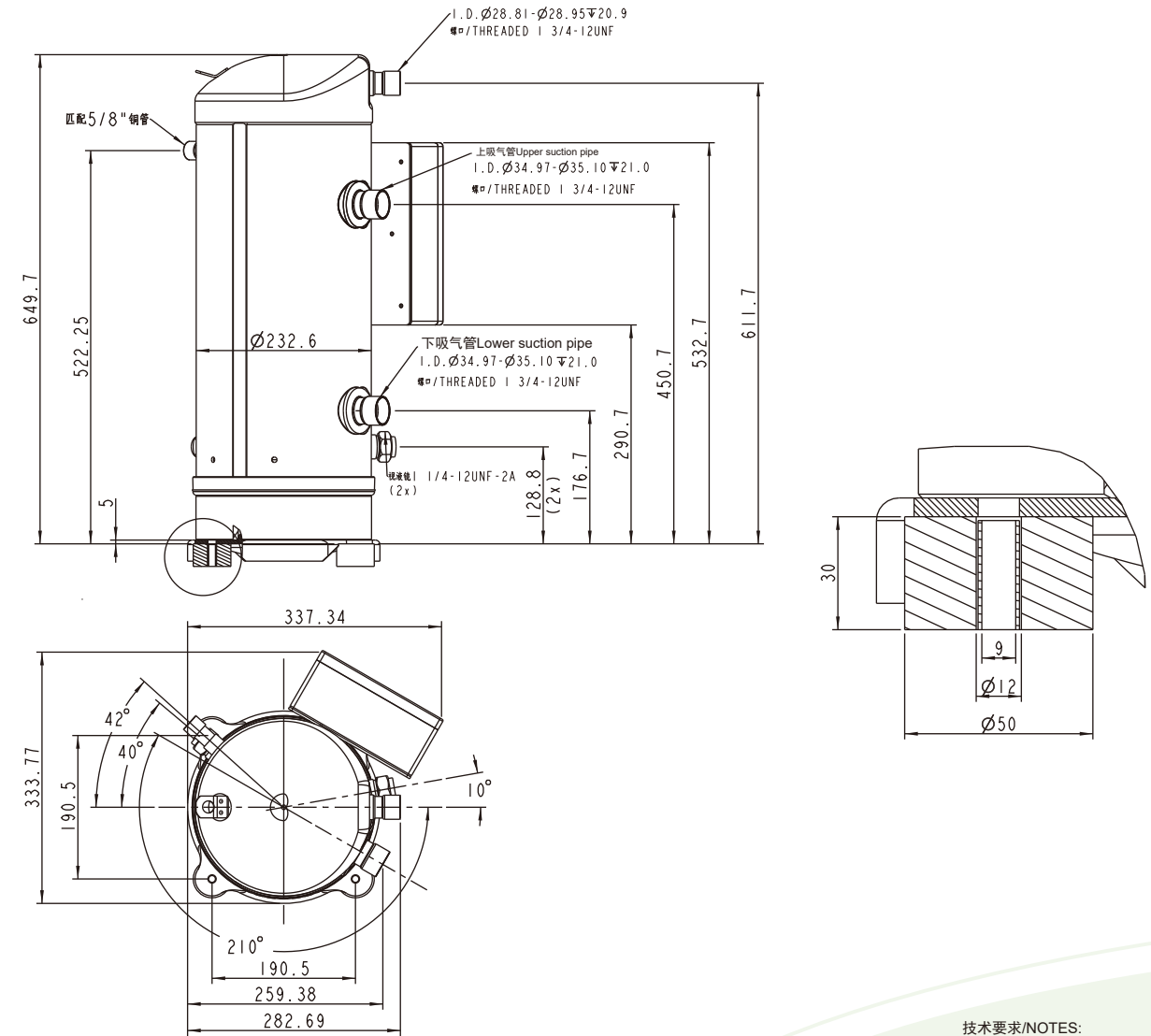
WH470-WH600



技术要求/NOTES:
 1. 未标注尺寸单位: mm
 UNSPECIFIED DIMENSION UNIT:mm.
 2. 未标注尺寸公差: ± 3 mm
 UNSPECIFIED DIMENSION TOLERANCE ± 3 mm.
 3. 未标注角度公差: $\pm 3^\circ$
 UNSPECIFIED ANGLE TOLERANCE: $\pm 3^\circ$.

外形尺寸 Dimension

WH470-WH600-EVI



技术要求/NOTES:
 1. 未标注尺寸单位: mm
 UNSPECIFIED DIMENSION UNIT:mm.
 2. 未标注尺寸公差: ± 3 mm
 UNSPECIFIED DIMENSION TOLERANCE ± 3 mm.
 3. 未标注角度公差: $\pm 3^\circ$
 UNSPECIFIED ANGLE TOLERANCE: $\pm 3^\circ$.

