



联系我们 / Contact Us

公司名称：苏州为山之环境技术有限公司

Suzhou Weishans Climate Technologies Co.,Ltd

公司官网 / Web: www.weishans.com

地址：江苏省苏州市相城区黄埭镇咏春科技园

Address: Yongchun Science and Technology Park, Huangdai Town, Xiangcheng District, Suzhou City, Jiangsu Province

免责声明

技术数据在印刷前已经校对过，印刷之后有再更新的可能。如有对某一参数确认的需求，请联系苏州为山之环境技术有限公司。为山对参数中可能存在的差错概不承担任何责任，为山之保留自行改变其产品而不预先通知的权利。

Disclaimer

Our technical data have been checked before printing, but it is possible for data to be updated after printing. If you need to confirm a certain parameter, please contact Suzhou Weishans Climate Technology Co., Ltd. Weishans will not take any responsibilities for any possible errors in the parameters and reserve the right to change its products without prior notice.

Rev:202603



WBD系列数字涡旋压缩机

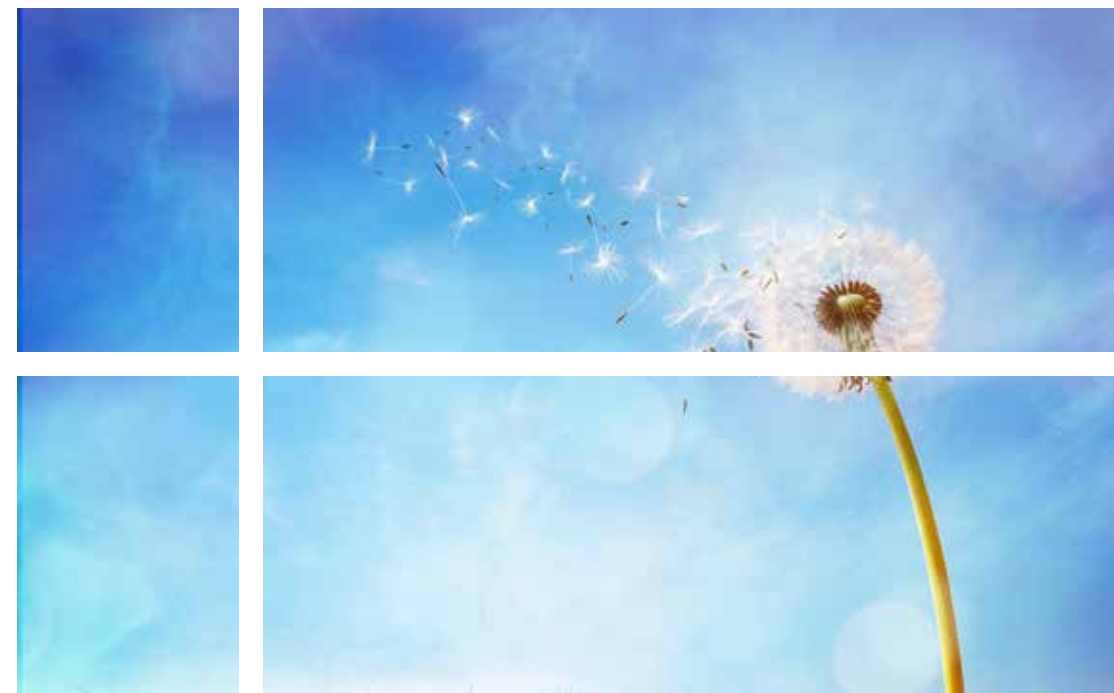
WBD Series Data Scroll Compressor



CATALOG

目录

公司介绍/ABOUT US	01
工作原理/WORKING PRINCIPLE	03
产品特点/FEATURES	04
命名规则/NOMENCLATURE	05
运行范围图/APPLICATION RANGE	06
技术参数/SPECIFICATIONS	07
性能参数表/PERFORMANCE DATA SHEET	09
外形图/OUTLINE	15



OUR VISION

企业愿景 OUR VISION

为山之遵循“求精不求巧，求本不求华”的产品理念，把“为山”打造成国内外知名品牌

We aim to make “Weishan” the first-class international brand. We always follow the thinking “to achieve perfection without ingenuity, seeking for origin without refinement.”

WWW.WEISHANS.COM

关于我们 ABOUT US

Suzhou Weishans Climate Technology Co., Ltd was established in June 2018, and focuses on the development of energy-saving and environment protection compressors. It is an innovative technology enterprise. The core technology of the scroll heat pump compressors developed by Weishans has made significant breakthroughs and has been successfully applied in multiple fields, including but not limited to industrial refrigeration, commercial hot water, industrial steam, agricultural drying, refrigeration engineering, precision air conditioning, rail transit refrigeration, rotary wheel dehumidification and industrial waste heat recovery, etc.

The company owns advanced automated production lines and high-precision testing and machining equipments, innovated technological process, with products covering the range from 2HP to 25HP. The company's products have passed multiple international certifications including CCC, CE, CB, ROHS & REACH and ISO 9001.

The company attaches great importance to the protection of intellectual property rights and has obtained several patent certificates. The company has been awarded the titles of Jiangsu Private Technology Enterprise and National High-tech Enterprise. Looking forward to the future, the company will continue to increase investment in research and development, and is committed to providing customers with green and environmentally heat pump and refrigeration compressor solutions. With the mission of reducing global carbon emissions, it will contribute to building a green Earth home.

苏州为山环境技术有限公司

成立于2018年6月，专注于开发节能环保型压缩机，是一家创新型科技企业。为山之研发的涡旋式热泵压缩机核心技术已取得重大突破，并成功应用于多个领域，包括但不限于工业制冷、商用热水、工业蒸汽、农业烘干、制冷工程、精密空调、轨道交通制冷、转轮除湿及工业余热回收等。

公司拥有先进的自动化生产线和高精度检测与加工设备，创新工艺流程，产品覆盖从2匹至25匹。公司产品通过了CCC、CE、CB、ROHS & REACH和ISO 9001等多项国际认证。

公司高度重视知识产权保护，产品已获得多项专利证书，公司荣获江苏省民营科技企业和国家级高新技术企业称号。

展望未来，公司将继续加大研发投入，致力于为客户提供绿色环保的热泵及冷冻压缩机解决方案，以减少全球碳排放为使命，为构建绿色地球家园贡献力量。

Build a Nine-ren Mountain
Forge Ahead
为山九仞 砥砺前行

工作原理 Working Principle

1. 数字变频涡旋压缩机通过涡旋盘接触 / 分离实现两级状态切换:

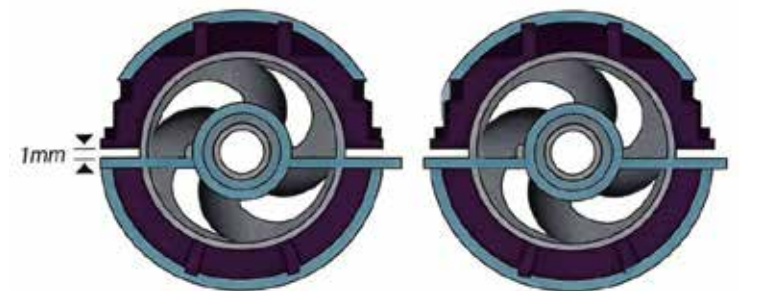
The Data inverter scroll compressor achieves a two-stage operational switch through the engagement and disengagement of its scroll discs:

2. 涡旋盘接触: 正常压缩压缩机等同于标准涡旋压缩机, 实现100% 冷媒压缩与能力输出

Scroll Disc Engagement: In this normal compression mode, the compressor functions identically to a standard scroll compressor, achieving 100% refrigerant compression and capacity output

3. 涡旋盘分离: 无压缩涡旋盘轴向分离, 无冷媒压缩, 能力输出为0%

Scroll Disc Disengagement: In this non-compression mode, the scroll discs separate axially; no refrigerant compression occurs, and the capacity output is 0%.



涡旋盘分离, 无压缩

Scroll separation, no compression

涡旋盘接触, 正常压缩

Scroll contact, normal compression

产品特点 Features

1. 数字涡旋系统的变容量范围最宽, 达 10-100%

The data scroll system offers the widest variable capacity range, spanning from 10% to 100%

2. 整体结构简单, 出现故障几率小

The overall structure is simple, resulting in a low probability of failure

3. 无电磁干扰问题, 精准控温控湿

It is free from electromagnetic interference issues and provides precise control over both temperature and humidity

4. 涡旋技术与机械卸载系统配合, 实现更加节能与可靠

The combination of scroll technology and a mechanical unloading system ensures enhanced energy efficiency and reliability.



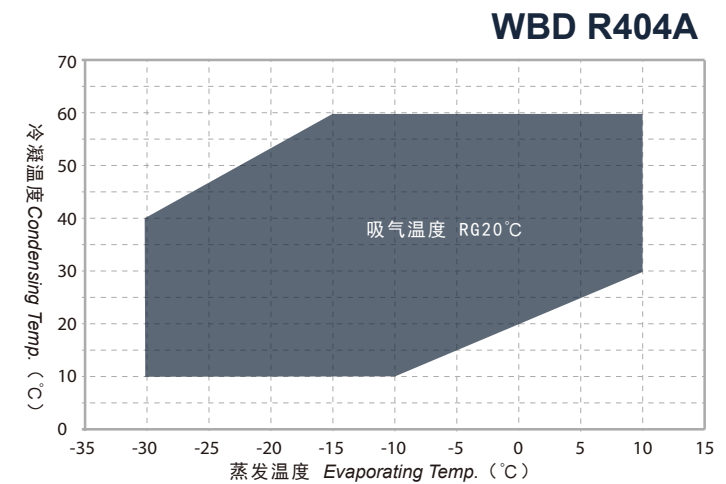
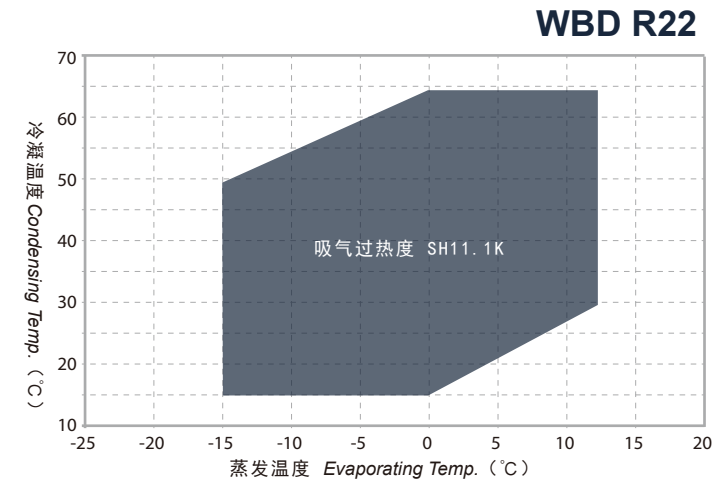
命名规则

Nomenclature

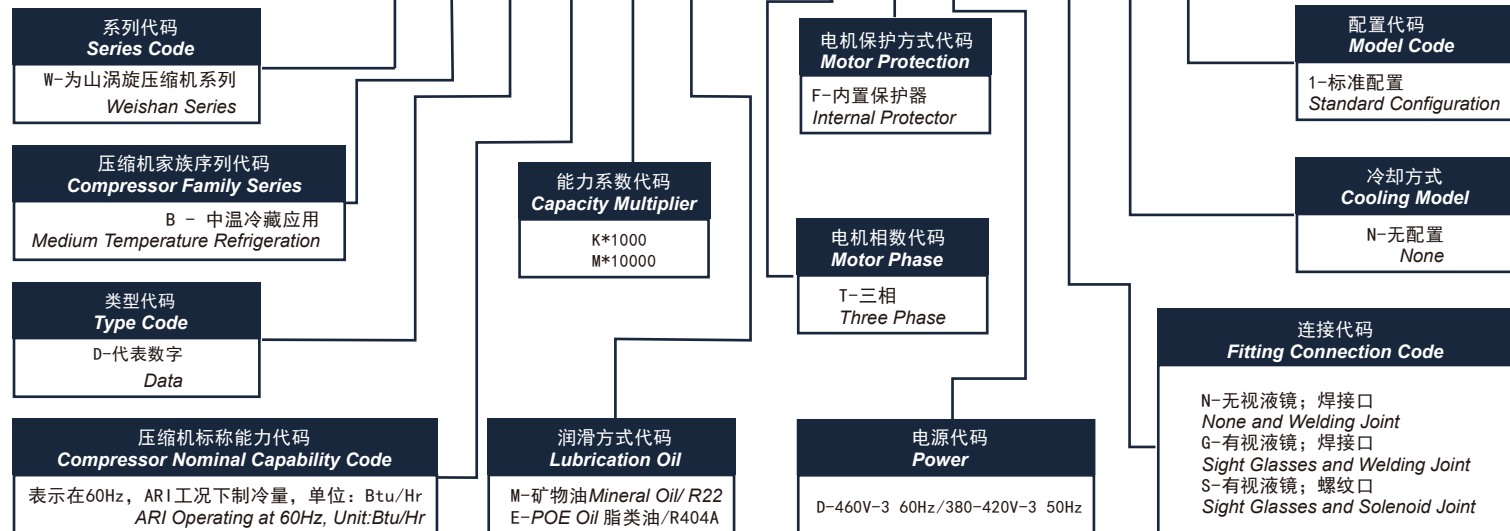


应用范围

Application Range



W B D 40 K E - T F D - G N 1



型号 Model	WBD22KM-TFD	WBD29KM-TFD	WBD40KM-TFD	WBD48KM-TFD	WBD76KM-TFD	WBD110KM-TFD
电制 Motor Power	380-420V/3~/50Hz or 460V/3~/60Hz					
名义功率(HP)	3	4	5	7	10	15
排量(cc/rev)	50.6	63.9	84.5	108	165.5	248.9
制冷剂 Refrigerant	R22					
名义制冷量 (W)	4950	6251	8650	11850	18300	25480
Nominal Capacity(W)						
名义输入功率(W)	2270	2867	3760	5060	7750	11220
Norminal Input Power						
名义工况能效比COP (W/W)	2.18	2.18	2.32	2.34	2.36	2.27
名义工况电流 RLA(A)	4.8	6.1	7.7	10.4	13.5	19.2
堵转电流 LRA(A)	46	46	61	110	149	149
最大运行电流 MOC(A)	6.6	10.2	11.4	15.3	22.2	31.2
曲轴箱加热器功率(W)	70			90		
Crank Heater Power						
接管尺寸 Fitting Size(mm)						
排气管内径 Dis. Tube	12.94-13.10		19.15-19.25		22.37-22.51	
吸气管内径Suc. Tube	22.37-22.51		22.37-22.51		34.97-35.10	
外形尺寸 Dimension(mm)						
长(L)	233.6		244.36		281.4	
宽(W)	230.5		230.5		273.7	
高(H)	442.7		491.9		523.7	
底脚安装尺寸(孔径)	190.5x190.5(9.0)			190.5x190.5(8.5)		
Mounting Dimension (Dia.)						
润滑油Lubrication OIL	3GS					
润滑油初次充注量(L)	1.4	1.4	1.8	1.8	3	3.2
Lubrication Oil Initial Charge						
润滑油重新充注量(L)	1.2	1.2	1.6	1.6	2.8	3
Lubrication Oil Recharge						
最大工作压力(MPa)						
高压侧 High Pressure Side	3					
低压侧Low Pressure Side	2					
重量 Weight(kg)	28	28	36	36	66	66

注: 蒸发-6.7°C, 冷凝48.9°C, 过热11.1K, 过冷0.0K
 Note: Evaporating Temperature -6.7°C, Condensing Temperature 48.9°C, Superheat 11.1K, Subcooling 0.0K

型号 Model	WBD22KE-TFD	WBD29KE-TFD	WBD40KE-TFD	WBD48KE-TFD	WBD76KE-TFD	WBD110KE-TFD
电制 Motor Power	380-420V/3~/50Hz or 460V/3~/60Hz					
名义功率(HP)	3	4	5	7	10	15
排量(cc/rev)	50.6	63.9	84.5	108	165.5	248.9
制冷剂 Refrigerant	R404A					
名义制冷量 (W)	4850	6125	8560	11330	17860	25210
Nominal Capacity(W)						
名义输入功率(W)	2690	3397	4260	5510	8930	12860
Norminal Input Power						
名义工况能效比COP (W/W)	1.8	1.8	2.03	2.05	2.01	1.96
名义工况电流 RLA(A)	5.2	6.6	8.1	11.3	15.6	21.6
堵转电流 LRA(A)	46	46	61	110	149	149
最大运行电流 MOC(A)	6.8	10.2	12.1	16.5	23.7	32.9
曲轴箱加热器功率(W)	70			90		
Crank Heater Power						
接管尺寸 Fitting Size(mm)						
排气管内径 Dis. Tube	12.94-13.10		19.15-19.25		22.37-22.51	
吸气管内径Suc. Tube	22.37-22.51		22.37-22.51		34.97-35.10	
外形尺寸 Dimension(mm)						
长(L)	244.36		244.36		281.4	
宽(W)	230.5		230.5		282.9	
高(H)	452.6		491.9		582.9	
底脚安装尺寸(孔径)	190.5x190.5(9.0)			190.5x190.5(8.5)		
Mounting Dimension (Dia.)						
润滑油Lubrication OIL	POE					
润滑油初次充注量(L)	1.4	1.4	1.8	1.8	3	3.2
Lubrication Oil Initial Charge						
润滑油重新充注量(L)	1.2	1.2	1.6	1.6	2.8	3
Lubrication Oil Recharge						
最大工作压力(MPa)						
高压侧 High Pressure Side	3.2					
低压侧Low Pressure Side	2					
重量 Weight(kg)	28	28	36	36	66	66

注: 蒸发-6.7°C, 冷凝48.9°C, 过热11.1K, 过冷0.0K
 Note: Evaporating Temperature -6.7°C, Condensing Temperature 48.9°C, Superheat 11.1K, Subcooling 0.0K

型号Model	项目Item	Tc/Te	-15°C	-10°C	-5°C	0°C	5°C	10°C
WBD22KM - TFD	Q	65°C				5429	6491	7771
	P					3356	3418	3453
	Q	60°C			4887	5868	7028	8406
	P				2961	3028	3083	3112
	Q	55°C		4309	5238	6308	7556	9022
	P			2617	2673	2731	2780	2807
	Q	50°C	3677	4585	5594	6743	8070	9614
	P		2338	2366	2412	2463	2508	2535
	Q	45°C	3891	4869	5948	7167	8563	10176
	P		2120	2137	2175	2222	2266	2293
	Q	40°C	4118	5157	6296	7575	9031	10703
	P		1922	1930	1962	2006	2049	2079
	Q	35°C	4352	5442	6633	7962	9469	11191
	P		1741	1742	1770	1813	1857	1892
	Q	30°C	4588	5721	6953	8323	9870	11632
	P		1575	1571	1597	1640	1688	1729
	Q	25°C	4821	5986	7251	8653	10231	
	P		1422	1415	1440	1485	1539	
	Q	20°C	5046	6234	7521	8945		
	P		1280	1271	1297	1347		
Q	15°C	5257	6459	7759	9196			
P		1147	1138	1167	1223			
WBD29KM - TFD	Q	65°C				6855	8197	9814
	P					4239		4360
	Q	60°C			6172	7411	8876	10616
	P				3740	3824	3893	3931
	Q	55°C		5442	6615	7966	9542	11394
	P			3305	3375	3449	3511	3545
	Q	50°C	4644	5790	7064	8515	10191	12141
	P		2952	2987	3045	3111	3168	3201
	Q	45°C	4914	6149	7512	9050	10814	12851
	P		2678	2699	2747	2806	2861	2895
	Q	40°C	5200	6512	7951	9566	11405	13517
	P		2427	2437	2478	2534	2588	2626
	Q	35°C	5495	6873	8377	10055	11958	14132
	P		2199	2200	2235	2289	2346	2389
	Q	30°C	5794	7224	8781	10511	12465	14690
	P		1989	1984	2016	2071	2132	2183
	Q	25°C	6088	7560	9157	10927	12920	
	P		1796	1786	1818	1876	1943	
	Q	20°C	6372	7873	9498	11297		
	P		1617	1605	1638	1701		
Q	15°C	6639	8157	9798	11613			
P		1448	1437	1474	1544			

注: 蒸发-6.7°C, 冷凝48.9°C, 吸气20.0°C, 过冷0.0K

Note: Evaporating Temperature -6.7°C, Condensing Temperature 48.9°C, Return Gas 20.0°C, Subcooling 0.0K

型号Model	项目Item	Tc/Te	-15°C	-10°C	-5°C	0°C	5°C	10°C
WBD40KM - TFD	Q	65°C				9065	10839	12978
	P					5605	5709	5766
	Q	60°C			8162	9800	11737	14038
	P				4945	5057	5148	5198
	Q	55°C		7196	8748	10534	12619	15067
	P			4371	4463	4561	4643	4688
	Q	50°C	6141	7657	9341	11260	13476	16055
	P		3904	3950	4027	4114	4189	4233
	Q	45°C	6498	8131	9933	11968	14300	16993
	P		3541	3569	3633	3711	3783	3829
	Q	40°C	6876	8612	10515	12650	15082	17874
	P		3210	3223	3277	3350	3422	3472
	Q	35°C	7267	9089	11077	13297	15812	18688
	P		2907	2909	2956	3027	3102	3159
	Q	30°C	7661	9553	11611	13900	16483	19426
	P		2630	2623	2666	2738	2819	2887
	Q	25°C	8051	9997	12109	14450	17085	
	P		2375	2362	2404	2480	2569	
	Q	20°C	8427	10411	12560	14938		
	P		2138	2122	2166	2249		
Q	15°C	8779	10786	12957	15356			
P		1915	1900	1949	2042			
WBD48KM - TFD	Q	65°C				11587	13854	16587
	P					7164	7296	7369
	Q	60°C			10432	12525	15001	17942
	P				6321	6463	6580	6643
	Q	55°C		9198	11181	13464	16128	19257
	P			5586	5705	5829	5934	5992
	Q	50°C	7849	9786	11939	14391	17224	20520
	P		4990	5049	5147	5258	5354	5410
	Q	45°C	8305	10393	12696	15296	18277	21719
	P		4525	4562	4643	4743	4836	4893
	Q	40°C	8788	11007	13439	16168	19276	22845
	P		4102	4120	4188	4282	4374	4437
	Q	35°C	9288	11616	14158	16995	20210	23885
	P		3716	3718	3778	3869	3964	4038
	Q	30°C	9792	12210	14840	17765	21067	24828
	P		3362	3353	3408	3500	3603	3690
	Q	25°C	10290	12777	15476	18469	21837	
	P		3036	3019	3073	3170	3284	
	Q	20°C	10770	13306	16053	19093		
	P		2732	2713	2769	2875		
Q	15°C	11221	13786	16561	19627			
P		2448	2428	2491	2610			

注: 蒸发-6.7°C, 冷凝48.9°C, 吸气20.0°C, 过冷0.0K

Note: Evaporating Temperature -6.7°C, Condensing Temperature 48.9°C, Return Gas 20.0°C, Subcooling 0.0K

型号Model	项目Item	Tc Te	-15°C	-10°C	-5°C	0°C	5°C	10°C
WBD76KM - TFD	Q	65°C				17755	21230	25418
	P					10978	11181	11293
	Q	60°C			15986	19193	22988	27495
	P				9686	9905	10083	10180
	Q	55°C		14095	17134	20632	24715	29509
	P			8560	8742	8933	9093	9182
	Q	50°C	12028	14996	18296	22053	26394	31444
	P		7647	7737	7887	8057	8205	8290
	Q	45°C	12727	15926	19455	23440	28008	33283
	P		6935	6990	7115	7269	7410	7499
	Q	40°C	13468	16867	20594	24776	29539	35008
	P		6287	6313	6418	6562	6703	6800
	Q	35°C	14233	17801	21695	26043	30970	36601
	P		5695	5698	5790	5929	6075	6187
	Q	30°C	15006	18711	22742	27224	32284	38047
	P		5152	5138	5222	5363	5521	5654
	Q	25°C	15768	19580	23716	28301	33463	
	P		4652	4627	4709	4858	5032	
	Q	20°C	16504	20391	24600	29258		
	P		4187	4157	4243	4405		
Q	15°C	17195	21126	25378	30077			
P		3751	3721	3817	3999			
WBD110KM - TFD	Q	65°C				26703	31928	38227
	P					16511	16815	16983
	Q	60°C			24041	28865	34572	41350
	P				14566	14896	15164	15310
	Q	55°C		21197	25768	31029	37169	44379
	P			12874	13147	13435	13676	13808
	Q	50°C	18089	22553	27516	33166	39695	47290
	P		11500	11636	11862	12117	12339	12468
	Q	45°C	19140	23952	29259	35253	42122	50055
	P		10430	10513	10701	10932	11144	11277
	Q	40°C	20254	25366	30972	37262	44424	52649
	P		9454	9494	9653	9868	10080	10227
	Q	35°C	21405	26771	32628	39167	46576	55046
	P		8564	8569	8707	8917	9136	9305
	Q	30°C	22567	28140	34202	40943	48552	57220
	P		7748	7728	7854	8066	8303	8503
	Q	25°C	23715	29447	35667	42563	50326	
	P		6996	6958	7082	7306	7568	
	Q	20°C	24821	30666	36997	44002		
	P		6297	6251	6381	6625		
Q	15°C	25860	31772	38167	45233			
P		5641	5596	5741	6014			

注：蒸发-6.7°C，冷凝48.9°C，吸气20.0°C，过冷0.0K

Note: Evaporating Temperature -6.7°C, Condensing Temperature 48.9°C, Return Gas 20.0°C, Subcooling 0.0K

型号Model	项目Item	Tc Te	-30°C	-25°C	-20°C	-15°C	-10°C	-5°C	0°C	5°C	10°C
WBD22KE - TFD	Q	60°C				2921	3718	4562	5470	6461	7553
	P					3434	3492	3528	3541	3533	3506
	Q	55°C				3553	4387	5295	6296	7406	8645
	P					3103	3148	3173	3180	3169	3142
	Q	50°C			3262	4056	4935	5916	7017	8256	9650
	P				2743	2793	2826	2843	2846	2834	2810
	Q	45°C		2909	3635	4455	5387	6449	7659	9034	10592
	P			2416	2467	2503	2527	2539	2539	2529	2510
	Q	40°C	2559	3188	3921	4775	5769	6920	8247	9766	11496
	P		2124	2172	2209	2235	2252	2260	2261	2254	2242
	Q	35°C	2781	3397	4144	5041	6105	7353	8805	10477	12387
	P		1914	1947	1972	1990	2002	2008	2011	2011	2008
	Q	30°C	2948	3560	4330	5277	6419	7774	9358	11191	13289
	P		1721	1740	1755	1767	1776	1784	1791	1799	1808
	Q	25°C	3086	3701	4503	5509	6737	8206	9932	11933	
	P		1544	1552	1560	1568	1576	1588	1602	1620	
	Q	20°C	3220	3847	4688	5761	7084	8674	10550		
	P		1384	1384	1386	1392	1403	1420	1443		
	Q	15°C	3374	4021	4910	6058	7484	9205			
	P		1243	1236	1236	1242	1257	1281			
Q	10°C	3574	4249	5194	6426	7962					
P		1121	1110	1108	1118	1139					
WBD29KE - TFD	Q	60°C				3689	4695	5760	6908	8160	9538
	P					4337	4410	4455	4472	4462	4427
	Q	55°C				4487	5540	6687	7950	9353	10918
	P					3919	3975	4007	4016	4002	3968
	Q	50°C			4119	5122	6232	7471	8861	10426	12187
	P				3464	3527	3569	3591	3594	3579	3548
	Q	45°C		3673	4590	5626	6804	8145	9672	11409	13376
	P			3050	3115	3161	3191	3206	3206	3194	3169
	Q	40°C	3232	4026	4951	6030	7285	8739	10414	12333	14518
	P		2682	2743	2790	2823	2844	2854	2855	2847	2832
	Q	35°C	3512	4290	5233	6366	7709	9286	11119	13230	15643
	P		2417	2459	2490	2513	2528	2536	2540	2539	2536
	Q	30°C	3723	4495	5468	6664	8106	9817	11818	14132	16782
	P		2173	2197	2216	2231	2243	2253	2262	2272	2284
	Q	25°C	3898	4674	5687	6957	8508	10362	12542	15070	
	P		1950	1960	1970	1980	1991	2005	2023	2046	
	Q	20°C	4067	4858	5920	7275	8946	10954	13323		
	P		1748	1748	1751	1758	1772	1793	1822		
	Q	15°C	4261	5078	6201	7651	9451	11624			
	P		1570	1561	1560	1569	1588	1618			
Q	10°C	4513	5366	6559	8114	10055					
P		1416	1401	1399	1411	1438					

注：蒸发-6.7°C，冷凝48.9°C，吸气20.0°C，过冷0.0K

Note: Evaporating Temperature -6.7°C, Condensing Temperature 48.9°C, Return Gas 20.0°C, Subcooling 0.0K

型号Model	项目Item	Tc/Te	-30°C	-25°C	-20°C	-15°C	-10°C	-5°C	0°C	5°C	10°C
WBD40KE - TFD	Q	60°C				4878	6209	7618	9135	10790	12613
	P					5735	5832	5891	5913	5901	5854
	Q	55°C				5933	7326	8842	10513	12369	14438
	P					5183	5257	5299	5310	5292	5247
	Q	50°C			5447	6773	8241	9879	11718	13787	16115
	P				4581	4664	4719	4748	4752	4733	4692
	Q	45°C		4857	6070	7440	8997	10770	12790	15086	17688
	P			4034	4119	4181	4220	4240	4240	4223	4191
	Q	40°C	4274	5324		7974	9634				19198
	P		3547	3628	6548	3733	3761	11557	13772	16309	3744
	Q	35°C	4644	5672	6921	8418	10195	12280	14704	17496	20685
	P		3197	3251	3293	3323	3343	3354	3359	3358	3354
	Q	30°C	4923	5944	7231	8813	10720	12981	15628	18688	22193
	P		2873	2906	2931	2950	2966	2979	2991	3004	3020
	Q	25°C	5154	6181	7520	9200	11251	13703	16585	19928	
	P		2578	2592	2605	2618	2633	2651	2675	2705	
	Q	20°C	5377	6424	7829	9621	11830	14486	17618		
	P		2312	2311	2315	2325	2343	2371	2410		
	Q	15°C	5635	6716	8200	10117	12498	15371			
	P		2076	2064	2063	2074	2099	2140			
Q	10°C	5968	7096	8674	10730	13296					
P		1872	1853	1850	1866	1902					
WBD48KE - TFD	Q	60°C				6235	7935	9736	11675	13791	16121
	P					7330	7530	7558	7542		
	Q	55°C				7584	9363	11301	13437	15808	18453
	P					6624	6719	6773	6787	6764	6706
	Q	50°C			6962	8657	10533	12627	14977	17621	20597
	P				5855	5961	6032	6069	6074	6049	5997
	Q	45°C		6208	7758	9509	11499	13766	16347	19282	22608
	P				5264	5343	5419	5419	5419	5356	
	Q	40°C	5462	6804	8368	10192	12314	14771	17602	20844	24537
	P		4534	4637	4715	4771	4807	4824	4825	4812	4786
	Q	35°C	5935	7250	8845	10759	13030	15695	18793	22361	26438
	P		4086	4155	4209	4247	4272	4287	4293	4292	4286
	Q	30°C	6292	7597	9242	11264	13701	16592	19974	23885	28365
	P		3672	3714	3746	3771	3791	3808	3823	3840	3859
	Q	25°C	6587	7900	9611	11758	14380	17514	21198	25470	
	P		3295	3313	3329	3346	3365	3389	3419	3457	
	Q	20°C	6873	8211	10006	12296	15120	18514	22518		
	P		2955	2954	2959	2972	2995	3031	3080		
	Q	15°C	7202	8583	10480	12931	15973	19646			
	P		2654	2639	2637	2651	2683	2735			
Q	10°C	7628	9070	11086	13715	16994					
P		2393	2368	2365	2385	2431					

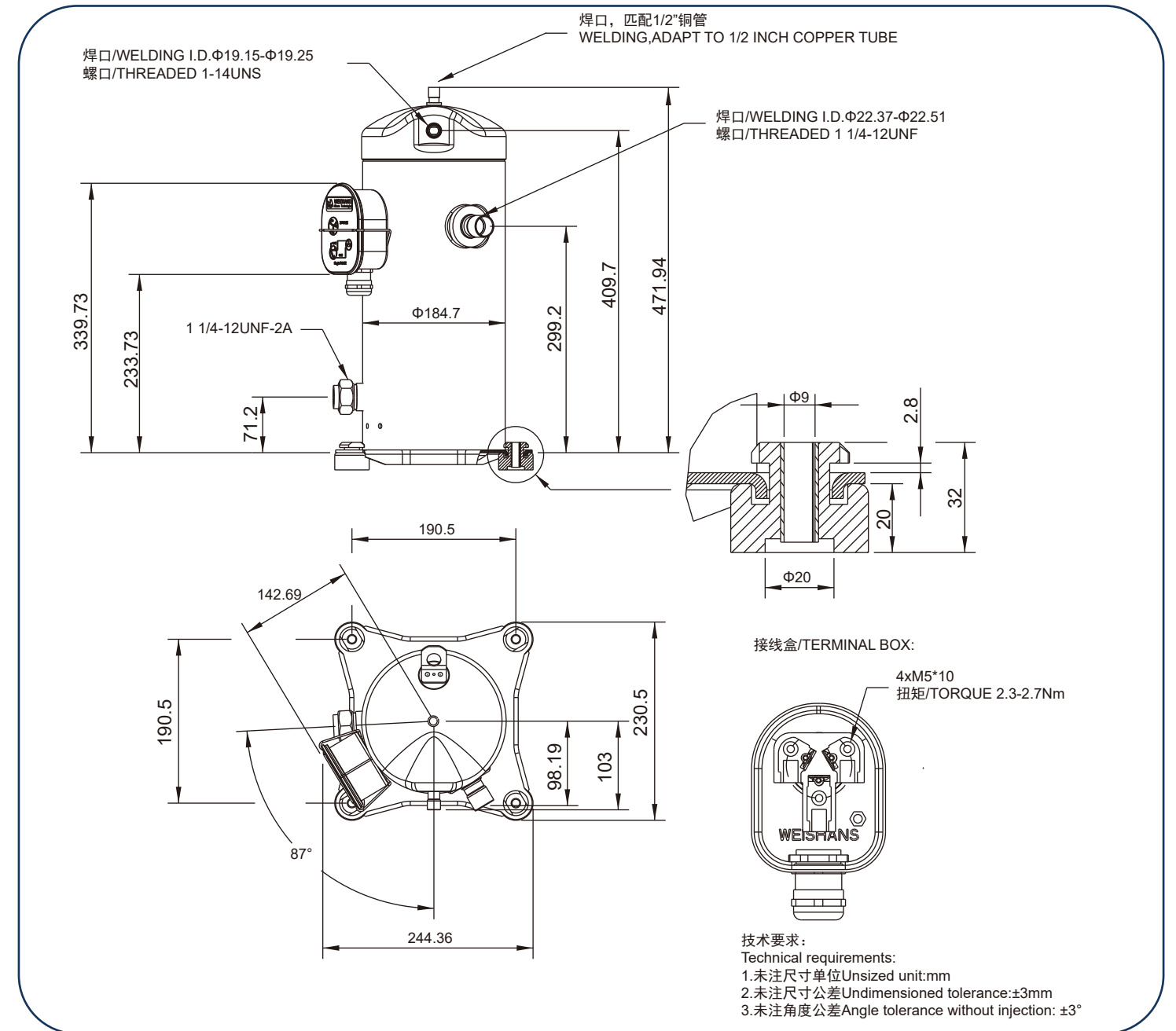
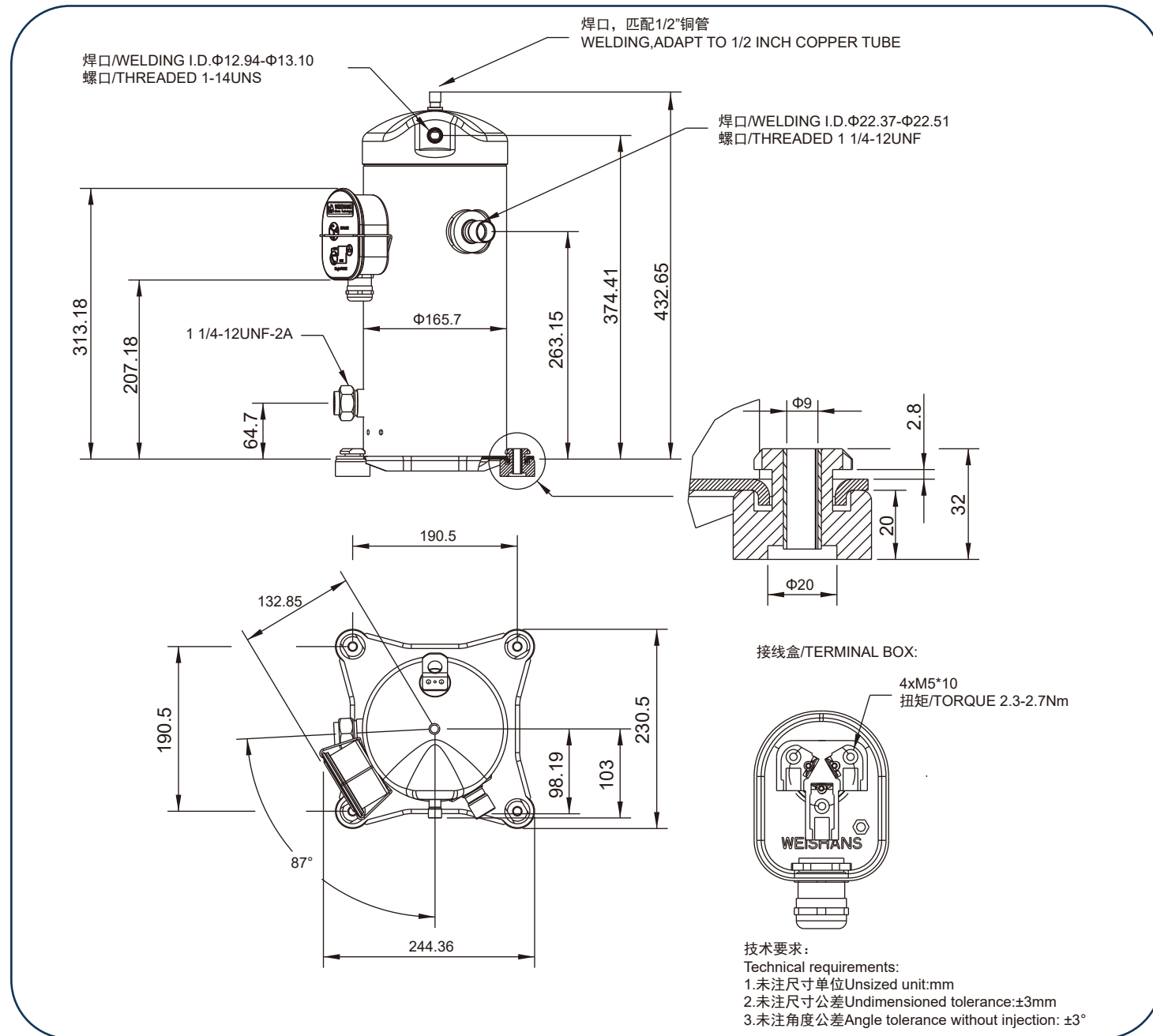
注: 蒸发-6.7°C, 冷凝48.9°C, 吸气20.0°C, 过冷0.0K

Note: Evaporating Temperature -6.7°C, Condensing Temperature 48.9°C, Return Gas 20.0°C, Subcooling 0.0K

型号Model	项目Item	Tc/Te	-30°C	-25°C	-20°C	-15°C	-10°C	-5°C	0°C	5°C	10°C
WBD76KE - TFD	Q	60°C				9554	12160	14920	17891	21133	24704
	P					11232	11423	11538	11582	11557	11466
	Q	55°C				11621	14348	17318	20591	24225	28277
	P					10151	10296	10379	10401	10366	10276
	Q	50°C			10668	13266	16141	19350	22951	27003	31563
	P				8972	9135	9243	9300	9307	9270	9190
	Q	45°C		9513	11889	14572	17621	21095	25051	29548	34644
	P			7901	8067	8188	8266	8303	8304	8272	8208
	Q	40°C	8370	10427	12824	15618	18869				37601
	P		6947	7105	7312	7366	7366	22635	26973	31942	3734
	Q	35°C	9095	11110	13555	16488	19967	24051	28798	34266	40514
	P		6261	6368	6449	6508	6547	6569	6578	6577	6568
	Q	30°C	9643	11642	14162	17261	20995	25425	30608	36602	43466
	P		5627	5691	5740	5779	5809	5835	5859	5884	5914
	Q	25°C	10095	12106	14728	18019	22036	26838	32484	39031	
	P		5049	5076	5101	5127	5156	5193	5239	5298	
	Q	20°C	10532	12583	15334	18843	23170	28371	34506		
	P		4528	4527	4534	4554	4590	4644	4720		
	Q	15°C	11037	13153	16060	19815	24478	30106			
	P		4067	4043	4041	4063	4112	4191			
Q	10°C	11690	13898	16988	21016	26042					
P		3667	3629	3624	3655	3725					
WBD 110KE - TFD	Q	60°C				14369	18288	22438	26907	31783	37153
	P					16893	17179				17244
	Q	55°C				17477	21578	26045	30968	36432	42527
	P					15266	15485	15609	15642	15589	15455
	Q	50°C			16044	19952	24275	29100	34516	40610	47469
	P				13494	13739	13901	13986	13998	13941	13821
	Q	45°C		14307	17880	21915	26501	31725	37675	44438	52102
	P				12133	12314	12314	12489	12489	12344	
	Q	40°C	12588	15682	19286	23489	28378	34041	40565	48039	56549
	P		10448	10686	10867	10996	11078	11118	11120	11089	11029
	Q	35°C	13678	16708	20385	24796	30029	36171	43310	51534	60930
	P		9416	9577	9699	9787	9846	9879	9893	9891	9878
	Q	30°C	14502	17509	21299	25959	31576	38238	46032	55047	65370
	P		8463	8559	8633	8691	8737	8775	8812	8850	8895
	Q	25°C	15181	18207	22150	27099	33140	40363	48853	58699	
	P		7594	7635	7672	7711	7755	7809	7879	7968	
	Q	20°C	15840	18923	23061	28339	34845	42668	51895		
	P		6810	6808	6819	6849	6903	6984	7098		
	Q	15°C	16599	19781	24153	29801	36813	45277			
	P		6116	6081	6078	6110	6184	6303			
Q	10°C	17580	20902	25549	31607	39165					
P		5515	5458	5451	5497	5602					

注: 蒸发-6.7°C, 冷凝48.9°C, 吸气20.0°C, 过冷0.0K

Note: Evaporating Temperature -6.7°C, Condensing Temperature 48.9°C, Return Gas 20.0°C, Subcooling 0.0K



外形尺寸 | Dimensional information

WBD76-WBD110

