



联系我们 / Contact Us

公司名称：苏州为山之环境技术有限公司

Suzhou Weishans Climate Technologies Co.,Ltd

公司官网 / **Web:www.weishans.com**

地址：江苏省苏州市相城区黄埭镇咏春科技园

Address: Yongchun Science and Technology Park, Huangdai Town, Xiangcheng District, Suzhou City, Jiangsu Province

免责声明

技术数据在印刷前已经校对过，印刷之后有再更新的可能。如有对某一参数确认的需求，请联系苏州为山之环境技术有限公司。为山对参数中可能存在的差错概不承担任何责任，为山之保留自行改变其产品而不预先通知的权利。

Disclaimer

Our technical data have been checked before printing, but it is possible for data to be updated after printing. If you need to confirm a certain parameter, please contact Suzhou Weishans Climate Technology Co., Ltd. Weishans will not take any responsibilities for any possible errors in the parameters and reserve the right to change its products without prior notice.

Rev:202605

WFH

变频超高温系列产品手册

Inverter Ultra-High Temp. Series Scroll Compressor

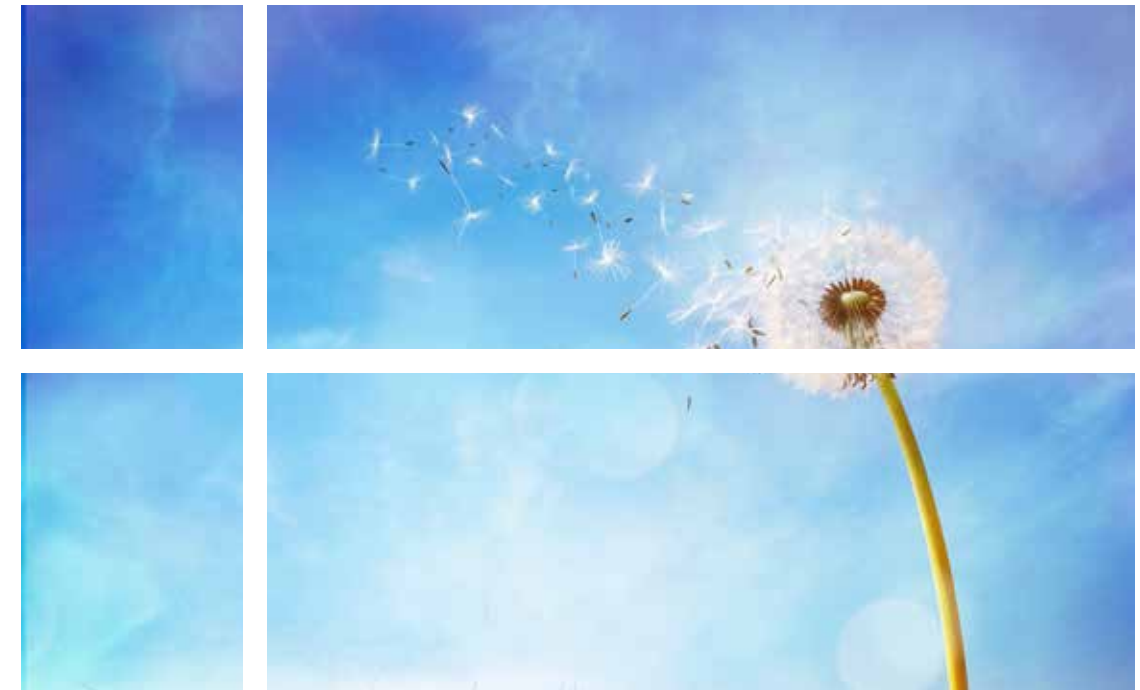
▶ **R1233zd**



CATALOG

目录

公司介绍/ABOUT US	01
命名规则/NOMENCLATURE	03
运行范围图/APPLICATION RANGE	04
变频器设置示例/INVERTER CONFIGURATION EXAMPLE	04
技术参数/SPECIFICATIONS	07
性能参数表/PERFORMANCE DATA SHEET	09



OUR VISION

企业愿景 OUR VISION

为山之遵循“求精不求巧，求本不求华”的产品理念，把“为山”打造成国内外知名品牌

We aim to make “Weishan” the first-class international brand. We always follow the thinking “to achieve perfection without ingenuity, seeking for origin without refinement.”

关于我们 ABOUT US

Suzhou Weishans Climate Technology Co., Ltd was established in June 2018, and focuses on the development of energy-saving and environment protection compressors. It is an innovative technology enterprise. The core technology of the scroll heat pump compressors developed by Weishans has made significant breakthroughs and has been successfully applied in multiple fields, including but not limited to industrial refrigeration, commercial hot water, industrial steam, agricultural drying, refrigeration engineering, precision air conditioning, rail transit refrigeration, rotary wheel dehumidification and industrial waste heat recovery, etc.

The company owns advanced automated production lines and high-precision testing and machining equipments, innovated technological process, with products covering the range from 2HP to 25HP. The company's products have passed multiple international certifications including CCC, CE, CB, ROHS & REACH and ISO 9001.

The company attaches great importance to the protection of intellectual property rights and has obtained several patent certificates. The company has been awarded the titles of Jiangsu Private Technology Enterprise and National High-tech Enterprise. Looking forward to the future, the company will continue to increase investment in research and development, and is committed to providing customers with green and environmentally heat pump and refrigeration compressor solutions. With the mission of reducing global carbon emissions, it will contribute to building a green Earth home.

苏州为山环境技术有限公司

成立于2018年6月，专注于开发节能环保型压缩机，是一家创新型科技企业。为山之研发的涡旋式热泵压缩机核心技术已取得重大突破，并成功应用于多个领域，包括但不限于工业制冷、商用热水、工业蒸汽、农业烘干、制冷工程、精密空调、轨道交通制冷、转轮除湿及工业余热回收等。公司拥有先进的自动化生产线和高精度检测与加工设备，创新工艺流程，产品覆盖从2匹至25匹。公司产品通过了CCC、CE、CB、ROHS & REACH和ISO 9001等多项国际认证。

公司高度重视知识产权保护，产品已获得多项专利证书，公司荣获江苏省民营科技企业和国家级高新技术企业称号。

展望未来，公司将继续加大研发投入，致力于为客户提供绿色环保的热泵及冷冻压缩机解决方案，以减少全球碳排放为使命，为构建绿色地球家园贡献力量。

Suzhou Weishans Climate Technology Co., Ltd

was established in June 2018, and focuses on the development of energy-saving and environment protection compressors. It is an innovative technology enterprise. The core technology of the scroll heat pump compressors developed by Weishans has made significant breakthroughs and has been successfully applied in multiple fields, including but not limited to industrial refrigeration, commercial hot water, industrial steam, agricultural drying, refrigeration engineering, precision air conditioning, rail transit refrigeration, rotary wheel dehumidification and industrial waste heat recovery, etc.

The company owns advanced automated production lines and high-precision testing and machining equipments, innovated technological process, with products covering the range from 2HP to 25HP. The company's products have passed multiple international certifications including CCC, CE, CB, ROHS & REACH and ISO 9001.

The company attaches great importance to the protection of intellectual property rights and has obtained several patent certificates. The company has been awarded the titles of Jiangsu Private Technology Enterprise and National High-tech Enterprise.

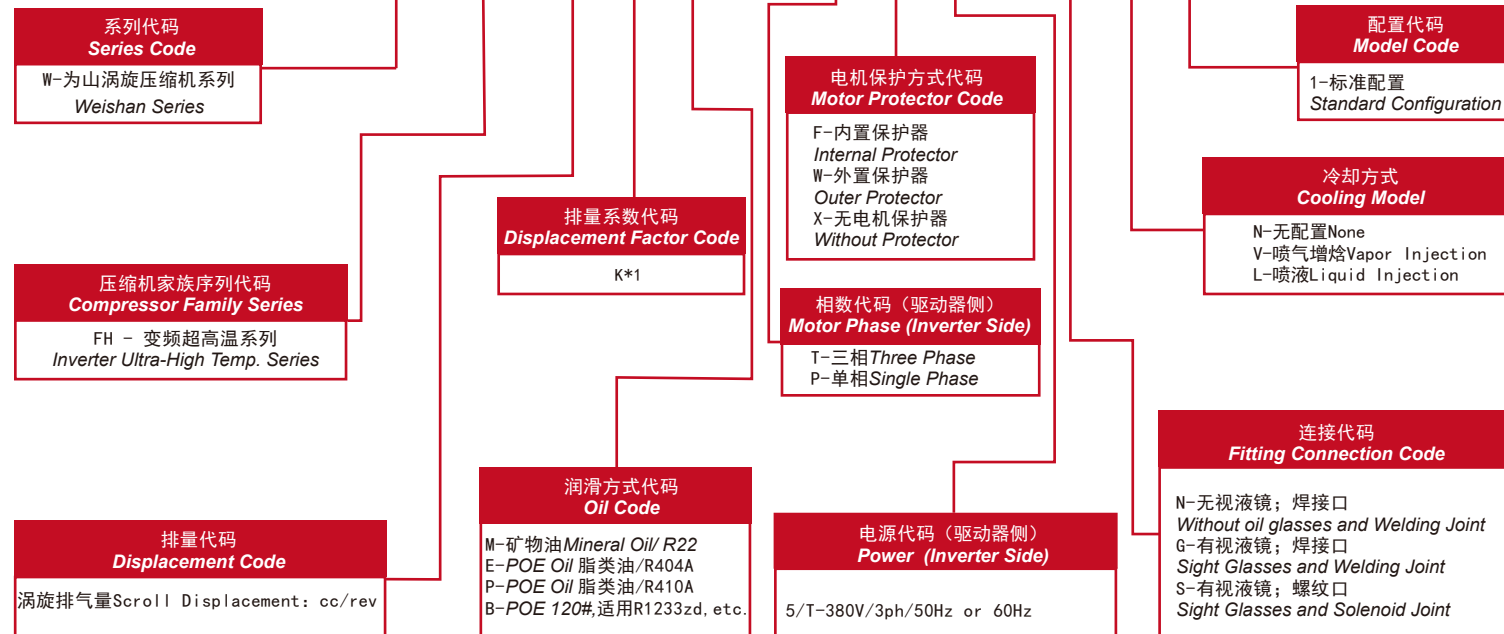
Looking forward to the future, the company will continue to increase investment in research and development, and is committed to providing customers with green and environmentally heat pump and refrigeration compressor solutions. With the mission of reducing global carbon emissions, it will contribute to building a green Earth home.

Build a Nine-ren Mountain
Forge Ahead
为山九仞 砥砺前行

命名规则 Nomenclature



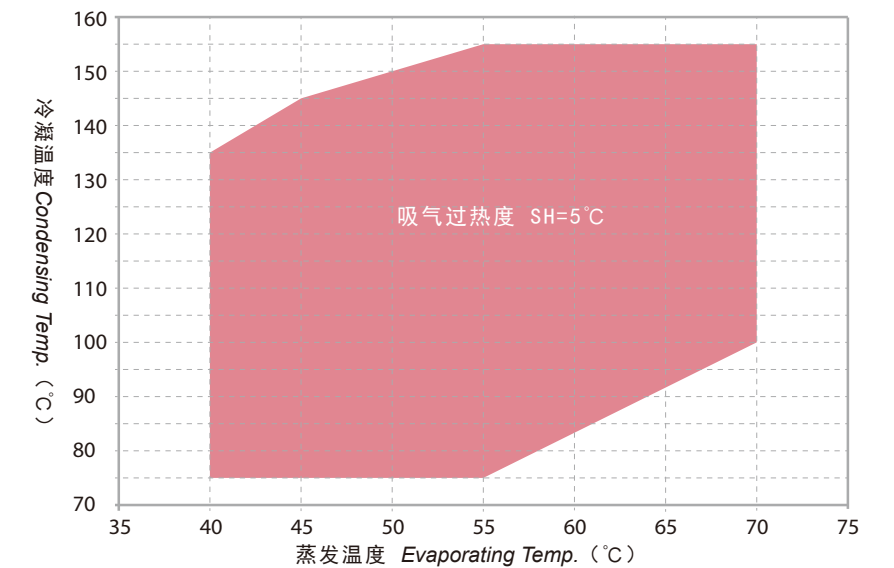
W F H 65 K B - T F 5 - G N 1



应用范围 Application Range

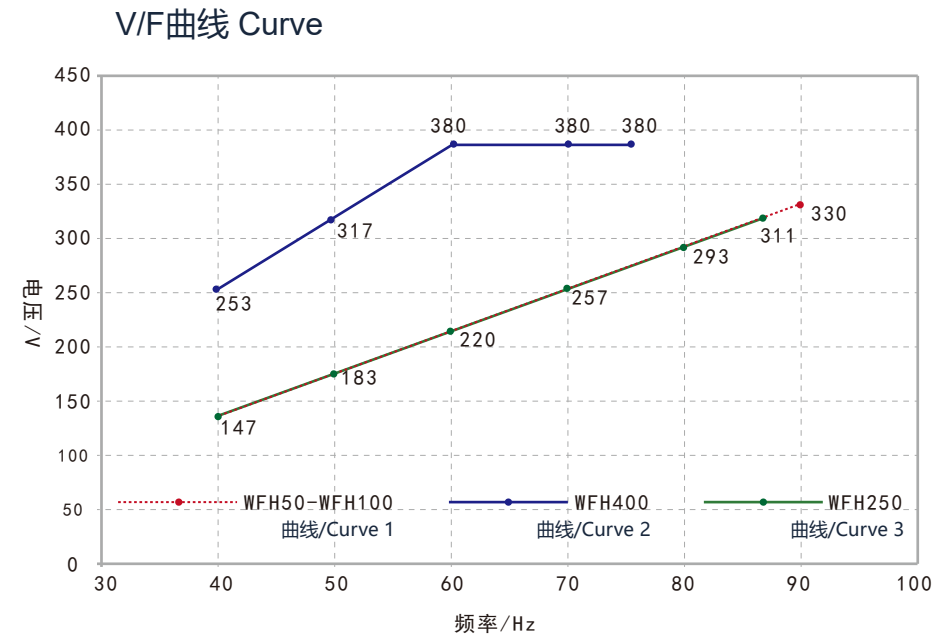
R1233zd
 WFH50-WFH100 40-90Hz
 WFH250 40-85Hz
 WFH120-WFH200 WFH320-WFH400 40-75Hz

R1233zd



变频器设置示例

Inverter Configuration Example



项目 Item		V/F 曲线1设置方式 V/F Curve 1 Setting Method		V/F 曲线2设置方式 V/F Curve 2 Setting Method		V/F 曲线3设置方式 V/F Curve 3 Setting Method	
		代码 Code	参数 Parameter	代码 Code	参数 Parameter	代码 Code	参数 Parameter
变频器型号 Inverter Model		DX100 系列 DX100 Series	/	DX100 系列 DX100 Series	/	DX100 系列 DX100 Series	/
压缩机型号 Compressor Model		WFH100KB-TF5	/	WFH200KB-TFT WFH400KB-TWT	/	WFH250KB-TF5	/
系统管理参数 System Manage Parameter	控制模式 Control Mode	F0.0.09	0020	F0.0.09	0020	F0.0.09	0020
运行指令选择 Operating Directive Select	最大输出频率 (Hz) Max. Output Frequency	F0.1.20	90	F0.1.20	75	F0.1.20	85
	上限频率 (Hz) Upper Limit Frequency	F0.1.21	90	F0.1.21	75	F0.1.21	85
	下限频率 (Hz) Lower Limit Frequency	F0.1.22	40	F0.2.27	40	F0.1.22	40
频率设定 Frequency Set	频率设定最小值 (Hz) Frequency Set Min. Value	F0.2.27	40	F0.2.29	40	F0.2.27	40
	频率设定最大值 (Hz) Frequency Set Max. Value	F0.2.28	90	F0.2.28	75	F0.2.28	85
启动与停止 Start and Stop	启动频率 Start Frequency	F0.4.39	40	F0.4.38	40	F0.4.39	40
V/F 参数与过载保护 V/F Parameter and OLP	电机基准频率 Motor Base Frequency	F1.2.15	90	F1.2.15	60	F1.2.15	85
	电机基准电压 Motor Base Voltage	F1.2.16	330	F1.2.16	380	F1.2.16	311
	电机V/F曲线频率点1 Motor V/F Curve Frequency 1	F1.2.19	40	F1.2.19	40	F1.2.19	40
	电机V/F曲线电压点1 Motor V/F Curve Voltage 1	F1.2.20	147	F1.2.20	253	F1.2.20	146
	电机V/F曲线频率点2 Motor V/F Curve Frequency 1	F1.2.21	60	F1.2.21	47	F1.2.21	60
	电机V/F曲线电压点2 Motor V/F Curve Voltage 1	F1.2.22	220	F1.2.22	298	F1.2.22	220
	电机V/F曲线频率点3 Motor V/F Curve Frequency 1	F1.2.23	80	F1.2.23	54	F1.2.23	80
	电机V/F曲线电压点3 Motor V/F Curve Voltage 1	F1.2.24	293	F1.2.24	342	F1.2.24	293

型号/Model	WFH50KB-TF5-GN1	WFH65KB-TF5-GN1	WFH80KB-TF5-GN1	WFH100KB-TF5-GN1	WFH120KB-TFT-GN1	WFH160KB-TFT-GN1	WFH200KB-TFT-GN1	WFH250KB-TF5-GN1	WFH320KB-TWT-GN1	WFH400KB-TWT-GN1
排量(cc/rev) Displacement	50.6	63.9	84.5	98.9	127	166.1	190.8	248.9	325	400
制冷剂 Refrigerant	R1233zd									
名义制热量(W) Nominal Heating Capacity	6002	7580	10023	11732	15065	19703	22633	29525	38552	47448
名义输入功率(W) Nominal Input Power	2084	2632	3481	4074	5232	6842	7860	10253	13388	16477
名义工况能效比(W/W) Nominal COP	2.88	2.88	2.88	2.88	2.88	2.88	2.88	2.88	2.88	2.88
电压-频率 Voltage-Hz	见V/F曲线 Refer to V/F Curve									
压缩机参数 Compressor Parameter										
相数 Phase	3									
电机类别 Motor Type	IM									
电机极对数 Motor Pole	2									
频率范围 Frequency Range	40-90	40-90	40-90	40-90	40-75	40-75	40-75	40-85	40-75	40-75
名义频率 Nominal Frequency	60									
名义工况电流(A) RLA	4.4	5.5	7.2	8.9	11.5	14.0	15.6	19.9	25.9	31.6
堵转电流(A) LRA	123.4	123.4	156.4	215.6	158.1	158.1	158.1	269.9	304	304
最大运行电流(A) MOC	8.0	10.1	13.3	16.4	21.2	25.9	28.7	36.7	47.8	58.3
变频器参数 Inverter Parameter										
变频器输入电源 Inverter Input Power	380-420V / 3 ~ / 50Hz or 60Hz									
变频器型号 Inverter Model	DX100-4T0075		DX100-4T0110		DX100-4T0150			DX100-4T0300		
变频器最大运行电流(A) Inverter MOC	7.0	10.1	13.3	16.4	21.2	25.9	28.7	36.7	47.8	58.3
润滑油类型 Oil Type	POE									
润滑油初次充注量(L) Initial Charge Oil Volume	1.4	1.4	1.8	1.8	3.2	3.2	3.2	3.2	5.0	5.0
润滑油重新充注量(L) Recharge Oil Volume	1.2	1.2	1.6	1.6	3.0	3.0	3.0	3.0	4.8	4.8
重量(kg) Weight	28	28	38	38	66	66	66	66	92	92

额定工况: 蒸发 50.0°C, 冷凝 120.0°C, 过热 5.0K, 过冷 5.0K, 环温 35.0°C
Rated Condition: E.T.50.0°C, C.T.120.0°C, S.H.5.0K, S.C.5.0K, A.T.35.0°C

型号/Model	WFH50KB-TF5-GV1	WFH65KB-TF5-GV1	WFH80KB-TF5-GV1	WFH100KB-TF5-GV1	WFH120KB-TFT-GV1	WFH160KB-TFT-GV1	WFH200KB-TFT-GV1	WFH250KB-TF5-GV1	WFH320KB-TWT-GV1	WFH400KB-TWT-GV1
排量(cc/rev) Displacement	50.6	63.9	84.5	98.9	127	166.1	190.8	248.9	325	400
制冷剂 Refrigerant	R1233zd									
名义制热量(W) Nominal Heating Capacity	7312	9234	12211	14292	18353	24003	27573	35969	46966	57805
名义输入功率(W) Nominal Input Power	2317	2926	3869	4529	5815	7606	8737	11397	14882	18316
名义工况能效比(W/W) Nominal COP	3.16	3.16	3.16	3.16	3.16	3.16	3.16	3.16	3.16	3.16
电压-频率 Voltage-Hz	见V/F曲线 Refer to V/F Curve									
压缩机参数 Compressor Parameter										
相数 Phase	3									
电机类别 Motor Type	IM									
电机极对数 Motor Pole	2									
频率范围 Frequency Range	40-90	40-90	40-90	40-90	40-75	40-75	40-75	40-85	40-75	40-75
名义频率 Nominal Frequency	60									
名义工况电流(A) RLA	4.8	6.1	8.0	9.9	12.8	15.6	17.3	22.1	28.8	35.1
堵转电流(A) LRA	123.4	123.4	156.4	215.6	158.1	158.1	158.1	269.9	304	304
最大运行电流(A) MOC	8.0	10.1	13.3	16.4	21.2	25.9	28.7	36.7	47.8	58.3
变频器参数 Inverter Parameter										
变频器输入电源 Inverter Input Power	380-420V / 3 ~ / 50Hz or 60Hz									
变频器型号 Inverter Model	DX100-4T0075		DX100-4T0110		DX100-4T0150			DX100-4T0300		
变频器最大运行电流(A) Inverter MOC	7.0	10.1	13.3	16.4	21.2	25.9	28.7	36.7	47.8	58.3
润滑油类型 Oil Type	POE									
润滑油初次充注量(L) Initial Charge Oil Volume	1.4	1.4	1.8	1.8	3.2	3.2	3.2	3.2	5.0	5.0
润滑油重新充注量(L) Recharge Oil Volume	1.2	1.2	1.6	1.6	3.0	3.0	3.0	3.0	4.8	4.8
重量(kg) Weight	28	28	38	38	66	66	66	66	92	92

额定工况: 蒸发 50.0°C, 冷凝 120.0°C, 过热 5.0K, 过冷 5.0K, 环温 35.0°C
Rated Condition: E.T.50.0°C, C.T.120.0°C, S.H.5.0K, S.C.5.0K, A.T.35.0°C

型号Model	项目Item (KW)	Tc\Te	40°C	45°C	50°C	55°C	60°C	65°C	70°C
WFH50KB-TF5-GN1	Q	155°C				5.21	5.74	6.37	7.12
	P					3.42	3.46	3.50	3.54
	Q	150°C			4.91	5.42	6.02	6.72	7.54
	P				3.15	3.20	3.24	3.27	3.30
	Q	145°C		4.58	5.07	5.64	6.30	7.08	7.98
	P			2.90	2.95	2.99	3.02	3.06	3.08
	Q	140°C		4.70	5.24	5.86	6.59	7.44	8.41
	P			2.71	2.75	2.79	2.82	2.85	2.88
	Q	135°C	4.32	4.83	5.42	6.10	6.89	7.81	8.86
	P		2.48	2.53	2.57	2.60	2.63	2.66	2.69
	Q	130°C	4.41	4.97	5.61	6.34	7.20	8.18	9.31
	P		2.32	2.36	2.40	2.43	2.46	2.48	2.51
	Q	125°C	4.52	5.11	5.80	6.59	7.51	8.56	9.76
	P		2.17	2.20	2.24	2.26	2.29	2.32	2.34
	Q	120°C	4.63	5.27	6.00	6.85	7.82	8.94	10.21
	P		2.02	2.05	2.08	2.11	2.14	2.16	2.19
	Q	115°C	4.75	5.43	6.21	7.11	8.14	9.32	10.67
	P		1.89	1.92	1.94	1.97	1.99	2.02	2.04
	Q	110°C	4.87	5.59	6.42	7.37	8.46	9.71	11.12
	P		1.76	1.79	1.81	1.84	1.86	1.88	1.91
Q	105°C	5.00	5.76	6.63	7.64	8.79	10.09	11.58	
P		1.64	1.67	1.69	1.71	1.74	1.76	1.79	
Q	100°C	5.13	5.93	6.85	7.90	9.11	10.48	12.03	
P		1.53	1.55	1.58	1.60	1.62	1.65	1.68	
Q	95°C	5.27	6.10	7.07	8.17	9.43	10.86		
P		1.43	1.45	1.47	1.49	1.52	1.54		
Q	90°C	5.41	6.28	7.28	8.44	9.75			
P		1.33	1.35	1.37	1.40	1.42			
Q	85°C	5.55	6.46	7.50	8.70	10.07			
P		1.24	1.26	1.28	1.31	1.33			
Q	80°C	5.69	6.63	7.72	8.96				
P		1.16	1.18	1.20	1.22				
Q	75°C	5.83	6.80	7.93	9.22				
P		1.08	1.10	1.12	1.15				
WFH65KB-TF5-GN1	Q	155°C				6.57	7.25	8.05	8.99
	P					4.32	4.37	4.42	4.46
	Q	150°C			6.20	6.84	7.60	8.49	9.53
	P				3.98	4.04	4.09	4.13	4.17
	Q	145°C		5.78	6.40	7.12	7.96	8.93	10.07
	P			3.66	3.72	3.77	3.82	3.86	3.90
	Q	140°C		5.93	6.62	7.41	8.33	9.39	10.63
	P			3.42	3.47	3.52	3.56	3.60	3.64
	Q	135°C	5.45	6.10	6.84	7.70	8.70	9.86	11.19
	P		3.14	3.19	3.24	3.29	3.33	3.36	3.39
	Q	130°C	5.57	6.27	7.08	8.01	9.09	10.33	11.75
	P		2.93	2.98	3.03	3.07	3.10	3.14	3.17
	Q	125°C	5.70	6.46	7.33	8.33	9.48	10.81	12.32
	P		2.73	2.78	2.82	2.86	2.89	2.93	2.96
	Q	120°C	5.84	6.65	7.58	8.65	9.88	11.29	12.89
	P		2.55	2.59	2.63	2.67	2.70	2.73	2.76
	Q	115°C	5.99	6.85	7.84	8.98	10.28	11.77	13.47
	P		2.38	2.42	2.45	2.49	2.52	2.55	2.58
	Q	110°C	6.15	7.06	8.11	9.31	10.69	12.26	14.04
	P		2.22	2.26	2.29	2.32	2.35	2.38	2.41
Q	105°C	6.31	7.27	8.38	9.64	11.10	12.75	14.62	
P		2.07	2.10	2.13	2.16	2.19	2.22	2.26	
Q	100°C	6.48	7.49	8.65	9.98	11.50	13.23	15.19	
P		1.93	1.96	1.99	2.02	2.05	2.08	2.12	
Q	95°C	6.66	7.71	8.92	10.32	11.91	13.72		
P		1.80	1.83	1.86	1.89	1.92	1.95		
Q	90°C	6.83	7.93	9.20	10.65	12.32			
P		1.68	1.71	1.73	1.76	1.79			
Q	85°C	7.01	8.15	9.47	10.99	12.72			
P		1.57	1.59	1.62	1.65	1.68			
Q	80°C	7.19	8.37	9.75	11.32				
P		1.46	1.49	1.51	1.54				
Q	75°C	7.36	8.59	10.02	11.65				
P		1.36	1.39	1.42	1.45				

注：以上数据基于5.0K 吸气过热度，5.0K 过冷度
Note: The above data are based on 5.0k supheating and 5.0k subcooling

型号Model	项目Item (KW)	Tc\Te	40°C	45°C	50°C	55°C	60°C	65°C	70°C
WFH80KB-TF5-GN1	Q	155°C				8.69	9.59	10.64	11.89
	P					5.71	5.78	5.85	5.90
	Q	150°C			8.19	9.04	10.05	11.22	12.60
	P				5.26	5.34	5.41	5.46	5.52
	Q	145°C		7.65	8.46	9.41	10.52	11.82	13.32
	P			4.84	4.92	4.99	5.05	5.10	5.15
	Q	140°C		7.85	8.75	9.79	11.01	12.42	14.05
	P			4.52	4.59	4.66	4.71	4.76	4.81
	Q	135°C	7.21	8.06	9.05	10.19	11.51	13.04	14.79
	P		4.15	4.22	4.29	4.35	4.40	4.44	4.49
	Q	130°C	7.37	8.29	9.36	10.60	12.02	13.66	15.54
	P		3.87	3.94	4.00	4.05	4.10	4.15	4.19
	Q	125°C	7.54	8.54	9.69	11.01	12.54	14.29	16.29
	P		3.62	3.68	3.73	3.78	3.83	3.87	3.91
	Q	120°C	7.73	8.79	10.02	11.44	13.07	14.93	17.05
	P		3.37	3.43	3.48	3.53	3.57	3.61	3.65
	Q	115°C	7.93	9.06	10.37	11.87	13.60	15.57	17.81
	P		3.15	3.20	3.25	3.29	3.33	3.37	3.41
	Q	110°C	8.13	9.34	10.72	12.31	14.13	16.21	18.57
	P		2.94	2.98	3.03	3.07	3.11	3.15	3.19
Q	105°C	8.35	9.62	11.08	12.75	14.67	16.86	19.33	
P		2.74	2.78	2.82	2.86	2.90	2.94	2.99	
Q	100°C	8.57	9.90	11.44	13.20	15.21	17.50	20.09	
P		2.55	2.59	2.63	2.67	2.71	2.75	2.80	
Q	95°C	8.80	10.19	11.80	13.64	15.75	18.14		
P		2.38	2.42	2.46	2.49	2.53	2.58		
Q	90°C	9.03	10.49	12.16	14.09	16.29			
P		2.22	2.26	2.29	2.33	2.37			
Q	85°C	9.27	10.78	12.53	14.53	16.82			
P		2.07	2.10	2.14	2.18	2.22			
Q	80°C	9.50	11.07	12.89	14.97				
P		1.93	1.96	2.00	2.04				
Q	75°C	9.74	11.36	13.24	15.40				
P		1.80	1.83	1.87	1.92				
WFH100KB-TF5-GN1	Q	155°C				10.18	11.22	12.46	13.91
	P					6.69	6.77	6.84	6.91
	Q	150°C			9.59	10.59	11.76	13.13	14.74
	P				6.16	6.25	6.33	6.39	6.46
	Q	145°C		8.95	9.90	11.02	12.31	13.83	15.59
	P			5.66	5.76	5.84	5.91	5.97	6.03
	Q	140°C		9.19	10.24	11.46	12.89	14.54	16.45
	P			5.29	5.38	5.45	5.52	5.57	5.63
	Q	135°C	8.44	9.44	10.59	11.92	13.47	15.26	17.31
	P		4.85	4.94	5.02	5.09	5.15	5.20	5.25
	Q	130°C	8.62	9.71	10.96	12.40	14.07	15.99	18.19
	P		4.53	4.61	4.68	4.75	4.80	4.85	4.90
	Q	125°C	8.83	9.99	11.34	12.89	14.68	16.73	19.07
	P		4.23	4.30	4.37	4.43	4.48	4.53	4.58
	Q	120°C	9.04	10.29	11.73	13.39	15.29	17.47	19.96
	P		3.95	4.02	4.07	4.13	4.18	4.23	4.27
	Q	115°C	9.28	10.60	12.13	13.90	15.92	18.22	20.85
	P		3.68	3.74	3.80	3.85	3.90	3.94	3.99
	Q	110°C	9.52	10.93	12.55	14.41	16.54	18.98	21.74
	P		3.44	3.49	3.54	3.59	3.64	3.68	3.73
Q	105°C	9.77	11.26	12.96	14.93	17.17	19.73	22.63	
P		3.20	3.26	3.30	3.35	3.39	3.44	3.50	
Q	100°C	10.03	11.59	13.39	15.45	17.80	20.48	23.51	
P		2.99	3.04	3.08	3.13	3.17	3.22	3.28	
Q	95°C	10.30	11.93	13.81	15.97	18.43	21.23		
P		2.79	2.83	2.87	2.92	2.97	3.02		
Q	90°C	10.57	12.27	14.24	16.49	19.06			
P		2.60	2.64	2.68	2.73	2.78			
Q	85°C	10.85	12.62	14.66	17.01	19.68			
P		2.42	2.46	2.51	2.55	2.60			
Q	80°C	11.12	12.96	15.08	17.52				
P		2.26	2.30	2.34	2.39				
Q	75°C	11.40	13.30	15.50	18.03				
P		2.11	2.15	2.19	2.24				

注：以上数据基于5.0K 吸气过热度，5.0K 过冷度
Note: The above data are based on 5.0k supheating and 5.0k subcooling

型号Model	项目Item (KW)	Tc\Te	40°C	45°C	50°C	55°C	60°C	65°C	70°C
WFH120KB-TFT-GN1	Q	155°C				13.07	14.41	16.00	17.87
	P					8.59	8.69	8.79	8.87
	Q	150°C			12.31	13.59	15.10	16.87	18.93
	P				7.91	8.02	8.12	8.21	8.29
	Q	145°C		11.50	12.72	14.14	15.81	17.76	20.02
	P			7.27	7.39	7.50	7.59	7.67	7.74
	Q	140°C		11.80	13.15	14.72	16.55	18.67	21.12
	P			6.80	6.90	7.00	7.08	7.16	7.23
	Q	135°C	10.84	12.12	13.60	15.31	17.30	19.59	22.23
	P		6.23	6.35	6.45	6.53	6.61	6.68	6.75
	Q	130°C	11.08	12.47	14.07	15.92	18.07	20.53	23.35
	P		5.82	5.92	6.01	6.09	6.17	6.23	6.30
	Q	125°C	11.33	12.83	14.56	16.55	18.85	21.48	24.49
	P		5.43	5.53	5.61	5.68	5.75	5.82	5.88
	Q	120°C	11.61	13.22	15.06	17.19	19.64	22.44	25.63
	P		5.07	5.16	5.23	5.30	5.36	5.43	5.49
	Q	115°C	11.91	13.62	15.58	17.84	20.44	23.40	26.77
	P		4.73	4.81	4.88	4.94	5.00	5.07	5.13
	Q	110°C	12.22	14.03	16.11	18.50	21.24	24.37	27.91
	P		4.41	4.48	4.55	4.61	4.67	4.73	4.80
Q	105°C	12.55	14.45	16.65	19.17	22.05	25.33	29.05	
P		4.12	4.18	4.24	4.30	4.36	4.42	4.49	
Q	100°C	12.88	14.88	17.19	19.84	22.86	26.30	30.19	
P		3.84	3.90	3.96	4.01	4.07	4.14	4.21	
Q	95°C	13.23	15.32	17.74	20.51	23.67	27.27		
P		3.58	3.64	3.69	3.75	3.81	3.88		
Q	90°C	13.58	15.76	18.28	21.18	24.48			
P		3.34	3.39	3.45	3.50	3.57			
Q	85°C	13.93	16.20	18.83	21.84	25.28			
P		3.11	3.16	3.22	3.28	3.34			
Q	80°C	14.28	16.64	19.37	22.50				
P		2.90	2.95	3.01	3.07				
Q	75°C	14.63	17.08	19.91	23.15				
P		2.71	2.76	2.82	2.88				
WFH160KB-TFT-GN1	Q	155°C				17.09	18.84	20.92	23.37
	P					11.23	11.37	11.50	11.61
	Q	150°C			16.11	17.78	19.75	22.06	24.76
	P				10.35	10.50	10.63	10.74	10.84
	Q	145°C		15.04	16.63	18.50	20.68	23.22	26.18
	P			9.51	9.67	9.80	9.92	10.03	10.13
	Q	140°C		15.43	17.20	19.25	21.64	24.41	27.62
	P			8.89	9.03	9.15	9.26	9.36	9.45
	Q	135°C	14.17	15.85	17.79	20.03	22.62	25.62	29.07
	P		8.15	8.30	8.43	8.54	8.64	8.74	8.82
	Q	130°C	14.49	16.30	18.40	20.83	23.63	26.85	30.55
	P		7.61	7.75	7.87	7.97	8.06	8.15	8.24
	Q	125°C	14.82	16.78	19.04	21.65	24.65	28.09	32.03
	P		7.11	7.23	7.34	7.43	7.52	7.61	7.69
	Q	120°C	15.19	17.29	19.70	22.49	25.68	29.34	33.52
	P		6.63	6.74	6.84	6.93	7.02	7.10	7.18
	Q	115°C	15.58	17.81	20.38	23.34	26.73	30.60	35.01
	P		6.19	6.29	6.38	6.46	6.54	6.62	6.71
	Q	110°C	15.99	18.35	21.07	24.20	27.78	31.87	36.51
	P		5.77	5.86	5.95	6.03	6.11	6.19	6.27
Q	105°C	16.41	18.90	21.77	25.07	28.84	33.13	38.00	
P		5.38	5.47	5.55	5.62	5.70	5.78	5.87	
Q	100°C	16.85	19.47	22.48	25.94	29.90	34.40	39.49	
P		5.02	5.10	5.17	5.25	5.33	5.41	5.50	
Q	95°C	17.30	20.04	23.20	26.82	30.96	35.66		
P		4.68	4.75	4.83	4.90	4.98	5.07		
Q	90°C	17.76	20.62	23.91	27.69	32.01			
P		4.36	4.43	4.51	4.58	4.66			
Q	85°C	18.22	21.19	24.63	28.56	33.06			
P		4.07	4.14	4.21	4.29	4.37			
Q	80°C	18.68	21.77	25.33	29.43				
P		3.79	3.86	3.93	4.02				
Q	75°C	19.14	22.34	26.03	30.28				
P		3.54	3.61	3.68	3.77				

注：以上数据基于5.0K 吸气过热度，5.0K 过冷度
Note: The above data are based on 5.0k supheating and 5.0k subcooling

型号Model	项目Item (KW)	Tc\Te	40°C	45°C	50°C	55°C	60°C	65°C	70°C
WFH200KB-TFT-GN1	Q	155°C				19.63	21.65	24.03	26.84
	P					12.90	13.06	13.20	13.33
	Q	150°C			18.50	20.42	22.68	25.34	28.44
	P				11.89	12.06	12.21	12.34	12.46
	Q	145°C		17.27	19.11	21.25	23.76	26.68	30.07
	P			10.93	11.11	11.26	11.40	11.52	11.63
	Q	140°C		17.72	19.75	22.11	24.86	28.04	31.73
	P			10.21	10.37	10.52	10.64	10.75	10.86
	Q	135°C	16.28	18.21	20.43	23.01	25.99	29.43	33.40
	P		9.36	9.53	9.68	9.81	9.93	10.04	10.14
	Q	130°C	16.64	18.73	21.14	23.92	27.14	30.84	35.09
	P		8.75	8.90	9.04	9.16	9.26	9.36	9.46
	Q	125°C	17.03	19.28	21.87	24.87	28.31	32.27	36.79
	P		8.16	8.30	8.43	8.54	8.64	8.74	8.83
	Q	120°C	17.45	19.86	22.63	25.83	29.50	33.71	38.50
	P		7.62	7.75	7.86	7.96	8.06	8.15	8.25
	Q	115°C	17.90	20.46	23.41	26.81	30.70	35.15	40.22
	P		7.11	7.22	7.33	7.42	7.52	7.61	7.71
	Q	110°C	18.36	21.08	24.20	27.80	31.91	36.61	41.93
	P		6.63	6.74	6.83	6.92	7.01	7.11	7.21
Q	105°C	18.85	21.71	25.01	28.80	33.13	38.06	43.65	
P		6.18	6.28	6.37	6.46	6.55	6.64	6.75	
Q	100°C	19.36	22.36	25.83	29.80	34.35	39.52	45.36	
P		5.77	5.86	5.94	6.03	6.12	6.22	6.32	
Q	95°C	19.87	23.02	26.65	30.81	35.56	40.96		
P		5.38	5.46	5.54	5.63	5.72	5.82		
Q	90°C	20.40	23.68	27.47	31.81	36.77			
P		5.01	5.09	5.18	5.26	5.36			
Q	85°C	20.93	24.34	28.29	32.81	37.97			
P		4.67	4.75	4.83	4.92	5.02			
Q	80°C	21.46	25.00	29.10	33.80				
P		4.36	4.44	4.52	4.61				
Q	75°C	21.99	25.66	29.91	34.78				
P		4.07	4.14	4.23	4.33				
WFH250KB-TF5-GN1	Q	155°C				25.61	28.24	31.35	35.02
	P					16.83	17.04	17.23	17.39
	Q	150°C			24.13	26.64	29.59	33.06	37.11
	P				15.50	15.73	15.92	16.09	16.25
	Q	145°C		22.53	24.93	27.72	30.99	34.80	39.23
	P			14.26	14.49	14.69	14.87	15.03	15.17
	Q	140°C		23.12	25.77	28.85	32.43	36.58	41.39
	P			13.32	13.53	13.72	13.88	14.03	14.17
	Q	135°C	21.24	23.75	26.65	30.01	33.90	38.40	43.57
	P		12.22	12.44	12.63	12.80	12.95	13.09	13.22
	Q	130°C	21.71	24.43	27.58	31.21	35.41	40.24	45.77
	P		11.41	11.61	11.79	11.94	12.08	12.22	12.34
	Q	125°C	22.21	25.15	28.54	32.44	36.94	42.10	47.99
	P		10.65	10.83	10.99	11.14	11.27	11.40	11.52
	Q	120°C	22.76	25.90	29.52	33.69	38.49	43.97	50.22
	P		9.94	10.11	10.25	10.39	10.51	10.63	10.76
	Q	115°C	23.34	26.69	30.54	34.97	40.05	45.86	52.46
	P		9.27	9.42	9.56	9.69	9.81	9.93	10.05
	Q	110°C	23.96	27.50	31.58	36.26	41.63	47.75	54.70
	P		8.65	8.79	8.91	9.03	9.15	9.27	9.40
Q	105°C	24.59	28.33	32.63	37.57	43.22	49.65	56.94	
P		8.07	8.19	8.31	8.43	8.54	8.67	8.80	
Q	100°C	25.25	29.17	33.69	38.88	44.81	51.55	59.18	
P		7.52	7.64	7.75	7.86	7.98	8.11	8.25	
Q	95°C	25.92	30.03	34.76	40.19	46.39	53.44		
P		7.01	7.12	7.23	7.34	7.46	7.60		
Q	90°C	26.61	30.89	35.83	41.50	47.97			
P		6.54	6.65	6.75	6.86	6.99			
Q	85°C	27.30	31.76	36.90	42.80	49.54			
P		6.10	6.20	6.31	6.42	6.55			
Q	80°C	27.99	32.62	37.96	44.09				
P		5.69	5.79	5.90	6.02				
Q	75°C	28.68	33.47	39.01	45.37				
P		5.30	5.40	5.52	5.64				

注：以上数据基于5.0K 吸气过热度，5.0K 过冷度
Note: The above data are based on 5.0k supheating and 5.0k subcooling

型号Model	项目Item (KW)	Tc\Te	40°C	45°C	50°C	55°C	60°C	65°C	70°C
WFH320KB-TWT-GN1	Q	155°C				33.44	36.87	40.93	45.72
	P					21.97	22.25	22.49	22.71
	Q	150°C			31.51	34.79	38.64	43.16	48.45
	P			20.24	20.54	20.79	21.01	21.22	21.22
	Q	145°C		29.42	32.55	36.20	40.47	45.44	51.23
	P		18.61	18.92	19.18	19.42	19.62	19.81	19.81
	Q	140°C		30.18	33.64	37.67	42.34	47.77	54.04
	P		17.39	17.67	17.91	18.13	18.32	18.50	18.50
	Q	135°C	27.74	31.01	34.80	39.19	44.27	50.14	56.89
	P		15.95	16.24	16.49	16.72	16.91	17.09	17.27
	Q	130°C	28.34	31.90	36.01	40.75	46.23	52.54	59.77
	P		14.90	15.16	15.39	15.59	15.78	15.95	16.12
	Q	125°C	29.01	32.84	37.26	42.36	48.23	54.97	62.66
	P		13.91	14.15	14.36	14.54	14.72	14.88	15.04
	Q	120°C	29.72	33.82	38.55	44.00	50.25	57.42	65.58
	P		12.98	13.20	13.39	13.56	13.73	13.89	14.05
	Q	115°C	30.48	34.85	39.88	45.66	52.30	59.88	68.50
	P		12.11	12.31	12.48	12.65	12.80	12.96	13.13
	Q	110°C	31.28	35.90	41.23	47.35	54.36	62.36	71.43
	P		11.29	11.47	11.64	11.80	11.95	12.11	12.27
Q	105°C	32.11	36.99	42.60	49.05	56.43	64.83	74.35	
P		10.53	10.70	10.85	11.00	11.15	11.31	11.49	
Q	100°C	32.97	38.09	43.99	50.76	58.51	67.31	77.27	
P		9.82	9.98	10.12	10.27	10.42	10.59	10.77	
Q	95°C	33.85	39.21	45.39	52.48	60.58	69.77		
P		9.16	9.30	9.44	9.59	9.75	9.92		
Q	90°C	34.74	40.34	46.79	54.19	62.64			
P		8.54	8.68	8.82	8.96	9.13			
Q	85°C	35.65	41.47	48.18	55.89	64.68			
P		7.96	8.10	8.24	8.39	8.56			
Q	80°C	36.55	42.59	49.57	57.58				
P		7.42	7.56	7.70	7.86				
Q	75°C	37.45	43.71	50.94	59.24				
P		6.92	7.06	7.20	7.37				
WFH400KB-TWT-GN1	Q	155°C				41.16	45.38	50.38	56.28
	P					27.04	27.68	27.95	27.95
	Q	150°C			38.79	42.81	47.56	53.12	59.63
	P			24.92	25.27	25.59	25.86	26.11	26.11
	Q	145°C		36.21	40.06	44.55	49.80	55.93	63.05
	P		22.91	23.28	23.61	23.90	24.15	24.39	24.39
	Q	140°C		37.15	41.41	46.36	52.11	58.79	66.51
	P		21.40	21.75	22.04	22.31	22.55	22.77	22.77
	Q	135°C	34.14	38.17	42.83	48.23	54.48	61.71	70.02
	P		19.63	19.99	20.30	20.57	20.82	21.04	21.25
	Q	130°C	34.88	39.26	44.32	50.16	56.90	64.66	73.56
	P		18.34	18.66	18.94	19.19	19.42	19.63	19.83
	Q	125°C	35.70	40.42	45.86	52.13	59.36	67.65	77.13
	P		17.12	17.41	17.67	17.90	18.11	18.32	18.51
	Q	120°C	36.58	41.63	47.45	54.15	61.85	70.67	80.71
	P		15.97	16.24	16.48	16.69	16.89	17.09	17.29
	Q	115°C	37.52	42.89	49.08	56.20	64.37	73.70	84.31
	P		14.90	15.15	15.36	15.57	15.76	15.95	16.15
	Q	110°C	38.50	44.19	50.74	58.28	66.91	76.75	87.91
	P		13.90	14.12	14.33	14.52	14.71	14.90	15.11
Q	105°C	39.52	45.52	52.43	60.37	69.45	79.80	91.51	
P		12.96	13.17	13.36	13.54	13.73	13.93	14.14	
Q	100°C	40.58	46.88	54.14	62.48	72.01	82.84	95.10	
P		12.09	12.28	12.46	12.64	12.83	13.03	13.26	
Q	95°C	41.66	48.26	55.86	64.59	74.55	85.88		
P		11.27	11.45	11.62	11.80	12.00	12.21		
Q	90°C	42.76	49.65	57.58	66.69	77.09			
P		10.51	10.68	10.85	11.03	11.23			
Q	85°C	43.87	51.04	59.30	68.79	79.61			
P		9.80	9.96	10.14	10.32	10.53			
Q	80°C	44.99	52.42	61.01	70.86				
P		9.14	9.30	9.48	9.67				
Q	75°C	46.09	53.79	62.69	72.91				
P		8.52	8.69	8.87	9.07				

注：以上数据基于5.0K 吸气过热度，5.0K 过冷度
Note: The above data are based on 5.0k supheating and 5.0k subcooling

型号Model	项目Item (KW)	Tc\Te	40°C	45°C	50°C	55°C	60°C	65°C	70°C
WFH50KB-TF5-GV1	Q	155°C				6.33	6.93	7.62	8.43
	P					3.79	3.84	3.87	3.88
	Q	150°C			6.05	6.64	7.33	8.11	9.02
	P			3.49	3.55	3.59	3.62	3.63	3.63
	Q	145°C		5.69	6.28	6.95	7.71	8.59	9.59
	P		3.21	3.27	3.32	3.36	3.38	3.39	3.39
	Q	140°C		5.85	6.50	7.24	8.08	9.04	10.15
	P		3.00	3.06	3.11	3.14	3.16	3.17	3.17
	Q	135°C	5.37	6.00	6.71	7.51	8.44	9.49	10.69
	P		2.74	2.81	2.86	2.90	2.93	2.95	2.95
	Q	130°C	5.46	6.14	6.91	7.79	8.79	9.93	11.22
	P		2.56	2.62	2.67	2.70	2.73	2.75	2.75
	Q	125°C	5.55	6.28	7.11	8.06	9.13	10.36	11.74
	P		2.40	2.45	2.49	2.52	2.54	2.56	2.57
	Q	120°C	5.65	6.43	7.31	8.32	9.48	10.78	12.26
	P		2.24	2.28	2.32	2.35	2.37	2.38	2.39
	Q	115°C	5.75	6.57	7.52	8.59	9.82	11.21	12.78
	P		2.08	2.12	2.16	2.18	2.21	2.22	2.23
	Q	110°C	5.85	6.73	7.73	8.87	10.16	11.64	13.30
	P		1.94	1.98	2.01	2.03	2.06	2.07	2.09
Q	105°C	5.97	6.89	7.94	9.15	10.52	12.07	13.82	
P		1.81	1.84	1.87	1.89	1.92	1.94	1.95	
Q	100°C	6.10	7.07	8.17	9.44	10.88	12.51	14.34	
P		1.68	1.71	1.74	1.76	1.79	1.81	1.83	
Q	95°C	6.25	7.26	8.41	9.74	11.25	12.96		
P		1.57	1.59	1.62	1.65	1.67	1.70		
Q	90°C	6.42	7.46	8.67	10.06	11.63			
P		1.46	1.48	1.51	1.54	1.57			
Q	85°C	6.61	7.69	8.95	10.39	12.04			
P		1.36	1.38	1.41	1.44	1.47			
Q	80°C	6.82	7.94	9.25	10.75				
P		1.27	1.29	1.32	1.36				
Q	75°C	7.06	8.22	9.57	11.13				
P		1.19	1.21	1.24	1.28				
WFH65KB-TF5-GV1	Q	155°C				7.99	8.75	9.63	10.65
	P					4.79	4.85	4.89	4.90
	Q	150°C			7.64	8.39	9.25	10.25	11.39
	P			4.41	4.48	4.54	4.57	4.58	4.58
	Q	145°C		7.19	7.93	8.77	9.74	10.84	12.11
	P		4.05	4.13	4.20	4.24	4.27	4.28	4.28
	Q	140°C		7.38	8.20	9.14	10.20	11.42	12.81
	P		3.79	3.86	3.92	3.96	3.99	4.00	4.00
	Q	135°C	6.78	7.57	8.47	9.49	10.66	11.98	13.50
	P		3.46	3.54	3.61	3.66	3.70	3.72	3.73
	Q	130°C	6.90	7.75	8.73	9.83	11.10	12.54	14.17
	P		3.24	3.31	3.37	3.41	3.45	3.47	3.48
	Q	125°C	7.01	7.93	8.98	10.17	11.53	13.08	14.83
	P		3.03	3.09	3.14	3.18	3.21	3.23	3.24
	Q	120°C	7.13	8.11	9.23	10.51	11.97	13.62	15.48
	P		2.82	2.88	2.93	2.96	2.99	3.01	3.02
	Q	115°C	7.26	8.30	9.49	10.85	12.40	14.15	16.14
	P		2.63	2.68	2.72	2.76	2.81	2.84	2.87
	Q	110°C	7.39	8.49	9.76	11.20	12.84	14.69	16.79
	P		2.45	2.50	2.54	2.57	2.60	2.62	2.64
Q	105°C	7.54	8.70	10.03	11.55	13.28	15.24	17.45	
P		2.28	2.32	2.36	2.39	2.42	2.45	2.47	
Q	100°C	7.71	8.92	10.32	11.92	13.74	15.79	18.11	
P		2.12	2.16	2.20	2.23	2.26	2.29	2.32	
Q	95°C	7.89	9.16	10.62	12.30	14.20	16.36		
P		1.98	2.01	2.05	2.08	2.11	2.15		
Q	90°C	8.10	9.43	10.95	12.70	14.69			
P		1.84	1.87	1.91	1.94	1.98			
Q	85°C								

型号Model	项目Item (KW)	Tc\Te	40°C	45°C	50°C	55°C	60°C	65°C	70°C
WFH80KB-TF5-GV1	Q	155°C				10.57	11.57	12.73	14.08
	P					6.33	6.41	6.46	6.49
	Q	150°C			10.10	11.10	12.24	13.55	15.06
	P				5.84	5.93	6.00	6.04	6.06
	Q	145°C		9.51	10.48	11.60	12.88	14.34	16.02
	P			5.35	5.46	5.55	5.61	5.65	5.66
	Q	140°C		9.76	10.85	12.08	13.49	15.10	16.94
	P			5.01	5.11	5.19	5.24	5.27	5.29
	Q	135°C	8.96	10.01	11.20	12.55	14.09	15.85	17.85
	P		4.58	4.69	4.77	4.84	4.89	4.92	4.93
	Q	130°C	9.12	10.25	11.54	13.00	14.68	16.58	18.73
	P		4.28	4.38	4.46	4.51	4.56	4.59	4.60
	Q	125°C	9.27	10.49	11.88	13.45	15.25	17.29	19.61
	P		4.00	4.08	4.15	4.21	4.25	4.27	4.29
	Q	120°C	9.43	10.73	12.21	13.90	15.82	18.01	20.48
	P		3.73	3.81	3.87	3.92	3.96	3.98	4.00
	Q	115°C	9.60	10.98	12.55	14.35	16.40	18.72	21.34
	P		3.48	3.55	3.60	3.65	3.68	3.71	3.73
	Q	110°C	9.78	11.23	12.90	14.81	16.97	19.43	22.20
	P		3.24	3.30	3.35	3.40	3.43	3.46	3.49
Q	105°C	9.97	11.51	13.26	15.27	17.56	20.15	23.07	
P		3.02	3.07	3.12	3.16	3.20	3.23	3.26	
Q	100°C	10.19	11.80	13.65	15.76	18.16	20.89	23.95	
P		2.81	2.86	2.90	2.95	2.99	3.02	3.06	
Q	95°C	10.44	12.12	14.05	16.26	18.78	21.64		
P		2.62	2.66	2.70	2.75	2.79	2.84		
Q	90°C	10.72	12.46	14.48	16.79	19.43			
P		2.44	2.48	2.52	2.57	2.62			
Q	85°C	11.03	12.85	14.94	17.35	20.10			
P		2.27	2.31	2.36	2.41	2.46			
Q	80°C	11.39	13.27	15.45	17.95				
P		2.12	2.16	2.21	2.26				
Q	75°C	11.79	13.73	15.99	18.58				
P		1.98	2.02	2.08	2.14				
WFH100KB-TF5-GV1	Q	155°C				12.37	13.54	14.90	16.48
	P					7.41	7.50	7.56	7.59
	Q	150°C			11.82	12.99	14.32	15.86	17.63
	P				6.83	6.94	7.02	7.07	7.10
	Q	145°C		11.12	12.27	13.58	15.07	16.78	18.75
	P			6.27	6.39	6.49	6.57	6.61	6.63
	Q	140°C		11.43	12.70	14.14	15.79	17.68	19.83
	P			5.87	5.98	6.07	6.13	6.17	6.19
	Q	135°C	10.49	11.72	13.11	14.69	16.49	18.55	20.89
	P		5.36	5.49	5.59	5.67	5.72	5.76	5.77
	Q	130°C	10.67	12.00	13.51	15.22	17.18	19.40	21.93
	P		5.01	5.12	5.21	5.28	5.33	5.37	5.38
	Q	125°C	10.85	12.28	13.90	15.75	17.85	20.24	22.95
	P		4.68	4.78	4.86	4.92	4.97	5.00	5.02
	Q	120°C	11.04	12.56	14.29	16.27	18.52	21.08	23.97
	P		4.37	4.46	4.53	4.59	4.63	4.66	4.68
	Q	115°C	11.23	12.85	14.69	16.79	19.19	21.91	24.98
	P		4.07	4.15	4.22	4.27	4.31	4.34	4.37
	Q	110°C	11.44	13.15	15.10	17.33	19.87	22.74	25.99
	P		3.79	3.86	3.92	3.97	4.02	4.05	4.08
Q	105°C	11.67	13.47	15.52	17.88	20.55	23.59	27.01	
P		3.53	3.60	3.65	3.70	3.74	3.78	3.82	
Q	100°C	11.93	13.81	15.97	18.44	21.26	24.45	28.04	
P		3.29	3.35	3.40	3.45	3.50	3.54	3.58	
Q	95°C	12.22	14.18	16.44	19.03	21.98	25.32		
P		3.06	3.11	3.17	3.22	3.27	3.32		
Q	90°C	12.54	14.59	16.95	19.66	22.74			
P		2.85	2.90	2.95	3.01	3.06			
Q	85°C	12.91	15.04	17.49	20.31	23.52			
P		2.66	2.71	2.76	2.82	2.88			
Q	80°C	13.33	15.53	18.08	21.01				
P		2.48	2.53	2.59	2.65				
Q	75°C	13.79	16.07	18.71	21.75				
P		2.32	2.37	2.43	2.50				

注：以上数据基于5.0K 吸气过热度，5.0K 过冷度
Note: The above data are based on 5.0k supheating and 5.0k subcooling

型号Model	项目Item (KW)	Tc\Te	40°C	45°C	50°C	55°C	60°C	65°C	70°C
WFH120KB-TFT-GV1	Q	155°C				15.88	17.39	19.14	21.16
	P					9.52	9.63	9.71	9.75
	Q	150°C			15.18	16.68	18.39	20.37	22.64
	P				8.77	8.91	9.02	9.08	9.11
	Q	145°C		14.29	15.76	17.43	19.35	21.55	24.07
	P			8.05	8.21	8.34	8.43	8.49	8.51
	Q	140°C		14.68	16.31	18.16	20.28	22.70	25.46
	P			7.53	7.68	7.79	7.87	7.92	7.94
	Q	135°C	13.47	15.05	16.83	18.86	21.18	23.82	26.82
	P		6.88	7.05	7.17	7.28	7.35	7.39	7.41
	Q	130°C	13.71	15.41	17.34	19.55	22.06	24.91	28.16
	P		6.44	6.58	6.70	6.79	6.85	6.89	6.91
	Q	125°C	13.94	15.77	17.85	20.22	22.92	25.99	29.47
	P		6.01	6.14	6.24	6.32	6.38	6.42	6.44
	Q	120°C	14.18	16.13	18.35	20.89	23.78	27.06	30.78
	P		5.61	5.72	5.82	5.89	5.95	5.99	6.01
	Q	115°C	14.43	16.50	18.86	21.57	24.64	28.13	32.07
	P		5.23	5.33	5.41	5.48	5.54	5.58	5.61
	Q	110°C	14.70	16.88	19.39	22.25	25.51	29.20	33.37
	P		4.87	4.96	5.04	5.10	5.16	5.20	5.24
Q	105°C	14.99	17.29	19.94	22.96	26.39	30.29	34.68	
P		4.54	4.62	4.69	4.75	4.81	4.86	4.91	
Q	100°C	15.32	17.73	20.51	23.68	27.30	31.39	36.00	
P		4.22	4.30	4.36	4.43	4.49	4.55	4.60	
Q	95°C	15.69	18.21	21.12	24.44	28.23	32.52		
P		3.93	4.00	4.07	4.13	4.20	4.26		
Q	90°C	16.11	18.73	21.76	25.24	29.20			
P		3.66	3.73	3.79	3.86	3.93			
Q	85°C	16.58	19.31	22.46	26.08	30.21			
P		3.41	3.47	3.54	3.62	3.70			
Q	80°C	17.11	19.94	23.21	26.98				
P		3.18	3.25	3.32	3.40				
Q	75°C	17.71	20.64	24.03	27.93				
P		2.98	3.04	3.12	3.21				
WFH160KB-TFT-GV1	Q	155°C				20.77	22.75	25.03	27.67
	P					12.45	12.60	12.70	12.75
	Q	150°C			19.86	21.81	24.05	26.64	29.61
	P				11.47	11.66	11.79	11.88	11.92
	Q	145°C		18.68	20.61	22.80	25.31	28.19	31.48
	P			10.53	10.74	10.91	11.03	11.10	11.13
	Q	140°C		19.19	21.33	23.75	26.52	29.69	33.30
	P			9.85	10.04	10.19	10.30	10.36	10.39
	Q	135°C	17.62	19.68	22.01	24.67	27.70	31.15	35.08
	P		9.00	9.21	9.38	9.52	9.61	9.67	9.69
	Q	130°C	17.93	20.15	22.68	25.56	28.85	32.58	36.83
	P		8.42	8.61	8.76	8.87	8.96	9.01	9.04
	Q	125°C	18.23	20.62	23.34	26.45	29.98	34.00	38.55
	P		7.86	8.03	8.16	8.27	8.35	8.40	8.43
	Q	120°C	18.54	21.09	24.00	27.32	31.10	35.40	40.25
	P		7.34	7.48	7.61	7.70	7.78	7.83	7.86
	Q	115°C	18.87	21.58	24.67	28.21	32.23	36.79	41.95
	P		6.84	6.97	7.08	7.17	7.24	7.30	7.34
	Q	110°C	19.22	22.08	25.36	29.10	33.37	38.20	43.65
	P		6.37	6.49	6.59	6.68	6.75	6.81	6.85
Q	105°C	19.61	22.62	26.07	30.02	34.52	39.61	45.36	
P		5.93	6.04	6.13	6.22	6.29	6.36	6.42	
Q	100°C	20.04	23.19	26.82	30.98	35.70	41.06	47.09	
P		5.52	5.62	5.71	5.79	5.87	5.95	6.02	
Q	95°C	20.52	23.82	27.62	31.97	36.92	42.53		
P		5.14	5.23	5.32	5.40	5.49	5.58		
Q	90°C	21.07	24.50	28.47	33.01	38.19			
P		4.79	4.87	4.96	5.05	5.14			
Q	85°C	21.68	25.25	29.38	34.11	39.51			
P		4.46	4.54	4.63	4.73	4.84			
Q	80°C	22.38	26.08	30.36	35.28				
P		4.16	4.25	4.34	4.45				
Q	75°C	23.17	26.99	31.43	36.53				
P		3.90	3.98	4.08	4.20				

注：以上数据基于5.0K 吸气过热度，5.0K 过冷度
Note: The above data are based on 5.0k supheating and 5.0k subcooling

型号Model	项目Item (KW)	Tc\Te	40°C	45°C	50°C	55°C	60°C	65°C	70°C
WFH200KB-TFT-GV1	Q	155°C				23.86	26.13	28.75	31.79
	P					14.30	14.47	14.59	14.64
	Q	150°C			22.81	25.06	27.63	30.60	34.01
	P				13.18	13.39	13.55	13.65	13.69
	Q	145°C		21.46	23.67	26.19	29.07	32.38	36.16
	P			12.09	12.34	12.53	12.67	12.75	12.79
	Q	140°C		22.05	24.50	27.28	30.47	34.10	38.26
	P			11.32	11.54	11.71	11.83	11.91	11.94
	Q	135°C	20.24	22.61	25.29	28.34	31.82	35.78	40.30
	P		10.34	10.58	10.78	10.93	11.04	11.11	11.13
	Q	130°C	20.59	23.15	26.06	29.36	33.14	37.43	42.30
	P		9.67	9.89	10.06	10.19	10.29	10.35	10.38
	Q	125°C	20.94	23.69	26.81	30.38	34.44	39.05	44.28
	P		9.03	9.22	9.38	9.50	9.59	9.65	9.68
	Q	120°C	21.30	24.23	27.57	31.39	35.73	40.66	46.24
	P		8.43	8.60	8.74	8.85	8.93	8.99	9.03
	Q	115°C	21.67	24.78	28.34	32.40	37.02	42.26	48.18
	P		7.86	8.01	8.13	8.24	8.32	8.38	8.43
	Q	110°C	22.08	25.36	29.13	33.43	38.33	43.88	50.14
	P		7.32	7.45	7.57	7.67	7.75	7.82	7.87
Q	105°C	22.52	25.98	29.95	34.49	39.65	45.50	52.10	
P		6.82	6.94	7.04	7.14	7.22	7.30	7.37	
Q	100°C	23.02	26.64	30.81	35.58	41.01	47.16	54.09	
P		6.34	6.45	6.56	6.65	6.74	6.83	6.91	
Q	95°C	23.57	27.36	31.72	36.72	42.41	48.86		
P		5.91	6.01	6.11	6.21	6.30	6.41		
Q	90°C	24.20	28.14	32.70	37.92	43.87			
P		5.50	5.60	5.70	5.80	5.91			
Q	85°C	24.91	29.01	33.75	39.19	45.38			
P		5.13	5.22	5.32	5.44	5.56			
Q	80°C	25.71	29.95	34.88	40.53				
P		4.78	4.88	4.99	5.11				
Q	75°C	26.61	31.00	36.10	41.96				
P		4.47	4.57	4.69	4.83				
WFH250KB-TF5-GV1	Q	155°C				31.13	34.09	37.51	41.47
	P					18.65	18.88	19.03	19.10
	Q	150°C			29.76	32.69	36.05	39.91	44.37
	P				17.19	17.47	17.67	17.80	17.86
	Q	145°C		28.00	30.88	34.17	37.93	42.24	47.18
	P			15.77	16.09	16.34	16.52	16.64	16.68
	Q	140°C		28.76	31.96	35.59	39.74	44.49	49.91
	P			14.77	15.05	15.27	15.43	15.53	15.57
	Q	135°C	26.41	29.49	32.99	36.97	41.50	46.68	52.57
	P		13.49	13.81	14.06	14.26	14.40	14.49	14.52
	Q	130°C	26.86	30.20	33.99	38.31	43.23	48.83	55.18
	P		12.62	12.90	13.12	13.30	13.43	13.51	13.54
	Q	125°C	27.32	30.90	34.98	39.63	44.92	50.94	57.76
	P		11.78	12.03	12.23	12.39	12.51	12.59	12.63
	Q	120°C	27.78	31.61	35.97	40.94	46.61	53.04	60.31
	P		11.00	11.22	11.40	11.54	11.65	11.73	11.78
	Q	115°C	28.27	32.33	36.97	42.27	48.30	55.13	62.86
	P		10.25	10.45	10.61	10.75	10.85	10.93	10.99
	Q	110°C	28.80	33.09	38.00	43.61	50.00	57.24	65.40
	P		9.55	9.72	9.87	10.00	10.11	10.20	10.27
Q	105°C	29.38	33.89	39.07	44.99	51.73	59.36	67.97	
P		8.89	9.05	9.19	9.31	9.42	9.52	9.61	
Q	100°C	30.03	34.76	40.19	46.42	53.50	61.52	70.56	
P		8.28	8.42	8.55	8.68	8.80	8.91	9.02	
Q	95°C	30.75	35.69	41.38	47.90	55.33	63.73		
P		7.70	7.84	7.97	8.10	8.22	8.36		
Q	90°C	31.57	36.72	42.66	49.47	57.23			
P		7.17	7.30	7.43	7.57	7.71			
Q	85°C	32.49	37.84	44.02	51.12	59.20			
P		6.69	6.81	6.94	7.09	7.25			
Q	80°C	33.54	39.08	45.50	52.87				
P		6.24	6.36	6.51	6.67				
Q	75°C	34.72	40.44	47.09	54.74				
P		5.84	5.96	6.12	6.30				

注：以上数据基于5.0K 吸气过热度，5.0K 过冷度
Note: The above data are based on 5.0k supheating and 5.0k subcooling

型号Model	项目Item (KW)	Tc\Te	40°C	45°C	50°C	55°C	60°C	65°C	70°C
WFH320KB-TWT-GV1	Q	155°C				40.65	44.51	48.97	54.15
	P					24.35	24.65	24.85	24.94
	Q	150°C			38.86	42.68	47.07	52.12	57.93
	P				22.44	22.81	23.08	23.24	23.32
	Q	145°C		36.56	40.33	44.61	49.52	55.15	61.60
	P			20.60	21.01	21.34	21.57	21.72	21.78
	Q	140°C		37.56	41.73	46.47	51.89	58.09	65.16
	P			19.28	19.65	19.94	20.15	20.28	20.33
	Q	135°C	34.48	38.51	43.07	48.27	54.19	60.95	68.64
	P		17.62	18.03	18.36	18.62	18.80	18.92	18.96
	Q	130°C	35.08	39.43	44.38	50.02	56.44	63.76	72.06
	P		16.47	16.84	17.13	17.36	17.53	17.64	17.68
	Q	125°C	35.67	40.35	45.67	51.75	58.66	66.52	75.42
	P		15.39	15.71	15.98	16.18	16.34	16.44	16.49
	Q	120°C	36.28	41.27	46.97	53.46	60.86	69.26	78.76
	P		14.36	14.65	14.88	15.07	15.22	15.32	15.38
	Q	115°C	36.92	42.22	48.28	55.19	63.06	71.99	82.08
	P		13.39	13.64	13.86	14.03	14.17	14.28	14.35
	Q	110°C	37.61	43.21	49.62	56.95	65.28	74.74	85.40
	P		12.47	12.70	12.89	13.06	13.20	13.32	13.41
Q	105°C	38.36	44.25	51.02	58.75	67.54	77.51	88.75	
P		11.61	11.82	12.00	12.16	12.31	12.44	12.55	
Q	100°C	39.21	45.38	52.48	60.61	69.86	80.33	92.13	
P		10.81	10.99	11.17	11.33	11.49	11.63	11.78	
Q	95°C	40.15	46.60	54.04	62.55	72.24	83.22		
P		10.06	10.23	10.40	10.57	10.74	10.91		
Q	90°C	41.22	47.94	55.70	64.59	74.72			
P		9.37	9.53	9.70	9.88	10.07			
Q	85°C	42.43	49.41	57.48	66.75	77.31			
P		8.73	8.89	9.07	9.26	9.47			
Q	80°C	43.79	51.02	59.41	69.04				
P		8.15	8.31	8.49	8.70				
Q	75°C	45.33	52.81	61.49	71.48				
P		7.62	7.79	7.99	8.22				
WFH400KB-TWT-GV1	Q	155°C				50.03	54.78	60.27	66.64
	P					29.97	30.34	30.59	30.70
	Q	150°C			47.82	52.53	57.93	64.15	71.30
	P				27.62	28.07	28.41	28.61	28.70
	Q	145°C		44.99	49.63	54.91	60.95	67.88	75.81
	P			25.35	25.86	26.26	26.55	26.73	26.81
	Q	140°C		46.22	51.36	57.20	63.87	71.50	80.20
	P			23.73	24.19	24.55	24.80	24.96	25.02
	Q	135°C	42.44	47.40	53.01	59.41	66.70	75.02	84.48
	P		21.68	22.19	22.60	22.91	23.14	23.28	23.34
	Q	130°C	43.17	48.53	54.62	61.56	69.47	78.47	88.69
	P		20.28	20.72	21.09	21.37	21.58	21.71	21.76
	Q	125°C	43.90	49.66	56.21	63.69	72.20	81.87	92.83
	P		18.94	19.34	19.66	19.92	20.11	20.23	20.29
	Q	120°C	44.65	50.79	57.80	65.80	74.91	85.24	96.93
	P		17.67	18.02	18.32	18.55	18.73	18.85	18.93
	Q	115°C	45.43	51.96	59.42	67.93	77.62	88.60	101.02
	P		16.47	16.79	17.05	17.27	17.44	17.57	17.66
	Q	110°C	46.28	53.18	61.07	70.09	80.35	91.98	105.11
	P		15.35	15.63	15.87	16.08	16.25	16.39	16.50
Q	105°C	47.22	54.47	62.79	72.30	83.13	95.40	109.23	
P		14.29	14.54	14.77	14.97	15.15	15.31	15.45	
Q	100°C	48.26	55.85	64.59	74.59	85.98	98.87	113.39	
P		13.30	13.53	13.75	13.95	14.14	14.32	14.50	
Q	95°C	49.42	57.36	66.51	76.98	88.92	102.42		
P		12.38	12.60	12.80	13.01	13.22	13.43		
Q	90°C	50.74	59.00	68.55	79.50	91.96			